



Kraaipan Project
A Botswana Greenstone Belt
Exploration Opportunity

November 26, 2024



FORWARD-LOOKING INFORMATION

This presentation contains projections and forward-looking information that involve various risks and uncertainties, including, without limitation, statements regarding the potential extent of mineralization, resources, reserves, exploration results and plans and objectives of North Arrow Minerals Inc. These risks and uncertainties include, but are not restricted to, the amount of geological data available, the uncertain reliability of drilling results and geophysical and geological data and the interpretation thereof and the need for adequate financing for future exploration and development efforts. There can be no assurance that such statements will prove to be accurate. Actual results and future events could differ materially from those anticipated in such statements. These and all subsequent written and oral forward-looking statements are based on the estimates and opinions of management on the dates they are made and are expressly qualified in their entirety by this notice. The Company assumes no obligation to update forward looking statements should circumstances or management's estimates or opinions change.

QUALIFIED PERSON
UNDER NI 43-101

Disclosure of a scientific or technical nature related to North Arrow's projects in this presentation has been reviewed and approved by Ken Armstrong, P.Geol. President and CEO of North Arrow and a Qualified Person under NI 43-101.

North Arrow is a Canadian company focused on the identification and evaluation of exploration opportunities.



NAR : TSXV

North Arrow's management and directors have a successful track record of resource discovery and development in Canada and Africa.



WEALTH OF EXPERIENCE

Ken Armstrong (President, CEO, Director, P.Ge. and Qualified Person under NI 43-101) 25+ years exploration & evaluation experience w/ Diavik, Aber, and others. Director & Past President NWT & Nunavut Chamber of Mines. Director Cornish Metals.

Eira M. Thomas (Chair) Extensive exploration and development experience in Canada and Botswana; Former officer &/or director Lucara, Suncor, Aber, Kaminak.

D. Grenville Thomas (Director) Founder of Aber Resources, discoverer of the Diavik Diamond Mine; Canadian Mining Hall of Fame inductee.

Blair Murdoch (Director) More than thirty years experience in senior management of private and public companies.

Torrie Chartier (Director) 25+ years of experience in northern mineral exploration and aviation industries.

Allison Rippin Armstrong (Advisor) 20+ years Canadian, African and other international CSR & ESG experience.



Ken Armstrong and Gren Thomas at the LDG Project NT

NORTH ARROW'S PROJECT PIPELINE

Permitted & Drill Ready - Lithium

1 **LDG Lithium**
(100%)
*Spodumene lithium
pegmatite showings*

2 **MacKay Lithium**
(100%)
*Spodumene lithium
pegmatite showings*

3 **DeStaffany**
(100%)
*Spodumene lithium
pegmatite showings*



Grassroots / Brownfields- Gold

★ Kraaipan Gold Project, Botswana
(*earning up to 80%*)
*>60 km of an underexplored and
fertile Archean greenstone belt*



Advanced Stage - Diamonds

1 **Naujaat (60%)**
*Significant diamond inventory;
High-value fancy orange & yellow
diamonds*

Discovery Stage - Diamonds

2 **Loki (100%)**
Kimberlite discovery - 2018

3 **Pikoo (100%)**
Kimberlite discovery - 2016

NEW OPPORTUNITY – Kraaipan Greenstone Belt

Option to earn up to an 80% interest in
Kraaipan Greenstone Belt Property, southern Botswana
GOLD & BASE METAL OPPORTUNITY

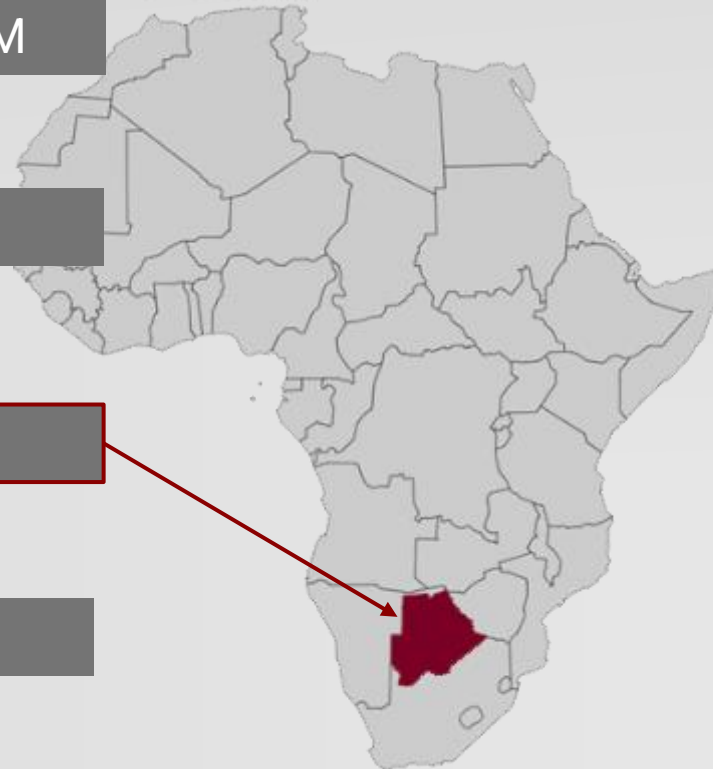
Greenstone Belt with Blue Sky Potential

WORLD-CLASS EXPLORATION TEAM

with a DISCOVERY TRACK RECORD

BOTSWANA FOCUS

BELT-SCALE OPPORTUNITY



- Project generated by specialists in sub-Saharan exploration
- Deploying cutting-edge proprietary technologies to rapidly advance projects in this under-explored region
- Located in Africa's premier miner-friendly / investment jurisdiction
- **>60km of the highly prospective Kraaipan Greenstone Belt under licence** located on trend ~40km north of Harmony Gold's Kalgold multi-million ounce open-pit gold mine



FRASER
INSTITUTE

The 2022 Fraser Institute Rankings for **Botswana**

2022 Global Policy Perception Index - Botswana ranked 2nd
2022 Investment Attractiveness Index - Botswana ranked 10th

Attractive jurisdiction for investment.

A long history of attracting and partnering with mid-tier and major mining companies to support and develop large mining projects.

Recent development projects include:

- 1. Lucara Diamonds:** mine expansion from open pit operations to underground
- 2. Khoemacau Copper Mining:** Cu-Ag mining development along the Kalahari Copperbelt
- 3. Sandfire Resources:** Cu-Ag mining development along the Kalahari Copperbelt

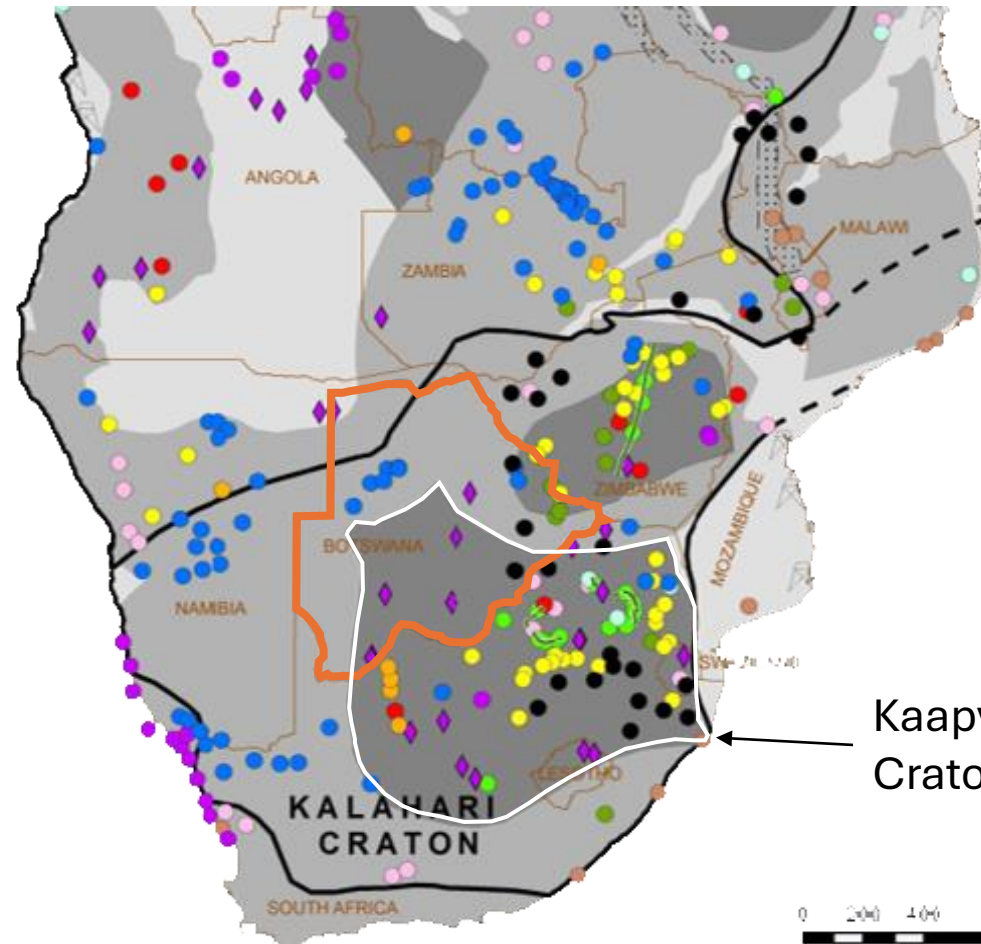


THE KRAAIPAN GREENSTONE PROJECT

KAAPVAAL CRATON – BOTSWANA



The Kaapvaal craton is a prolific locality for gold, PGE and base metal deposits in South Africa;



But less so in Botswana

WHY?

Kaapvaal Craton


North Arrow

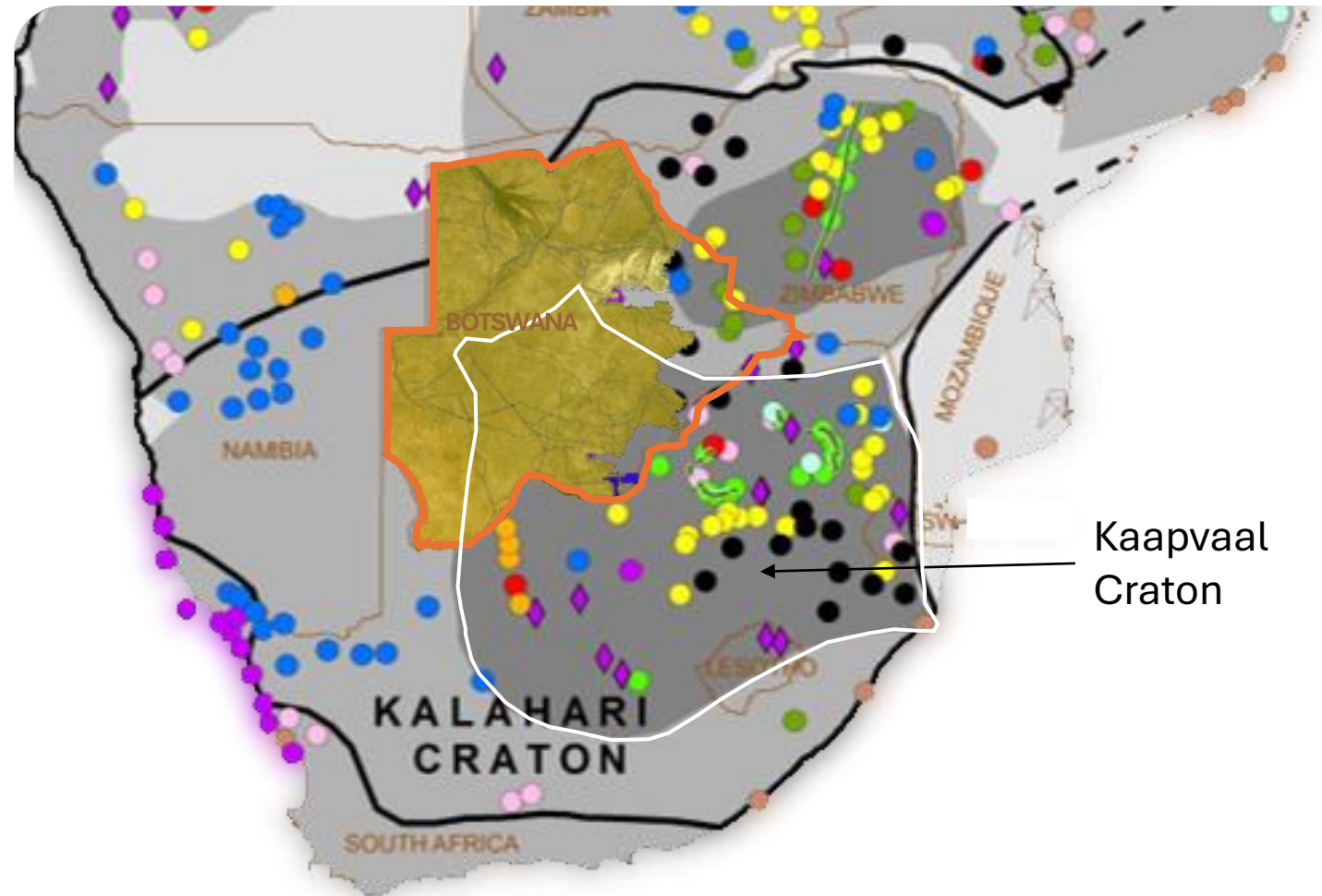
MINERALS INC.

- Kalahari Desert sands cover >70% of Botswana - has hindered exploration of many prospective areas.
- South Africa is twice the size of Botswana but boasts **5 times as many mines**; despite very similar geological potential.

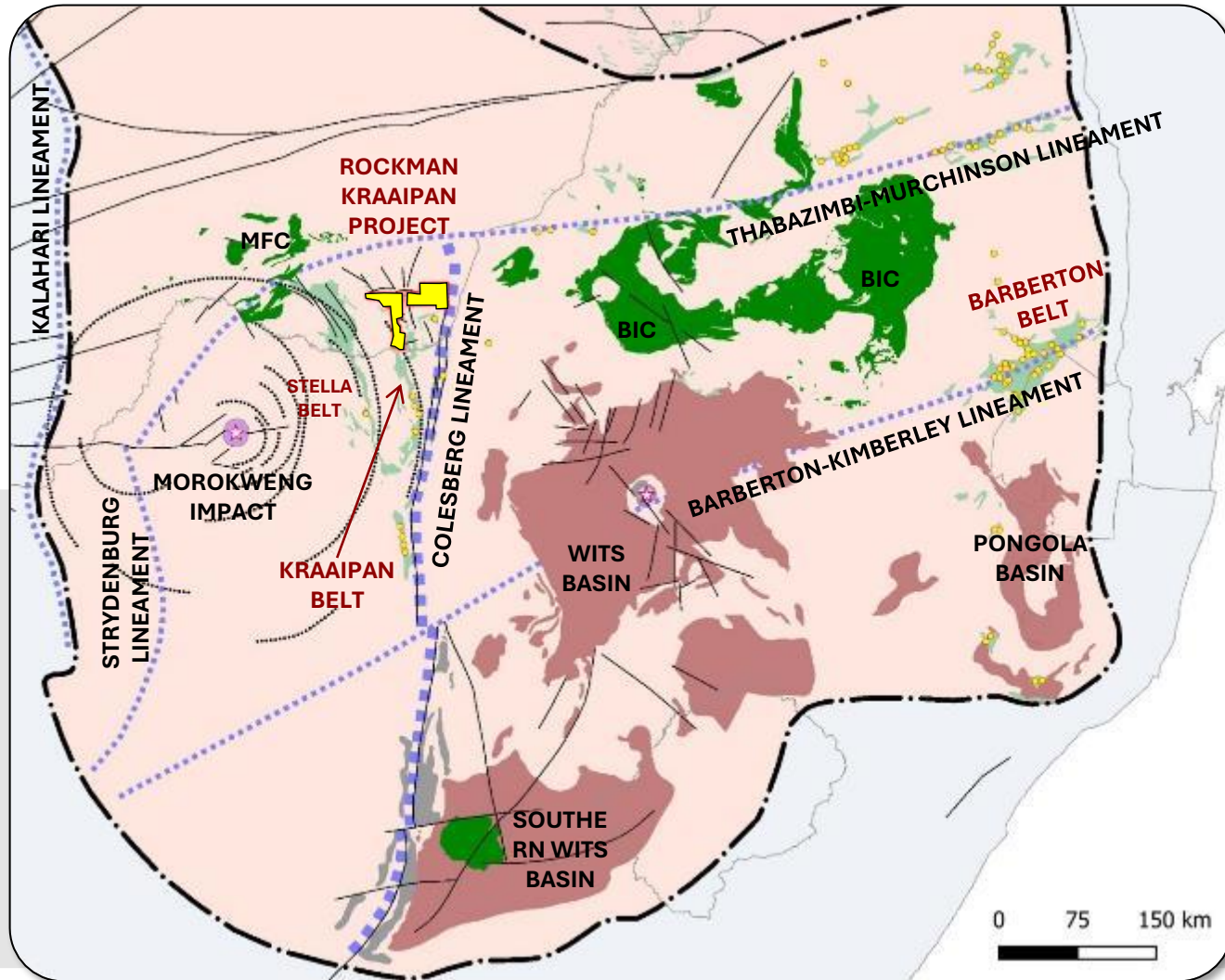
**South Africa has 552 mines
Botswana has just 116 mines***

(*from Africa Mining IQ Website)

 Kalahari Sand Cover



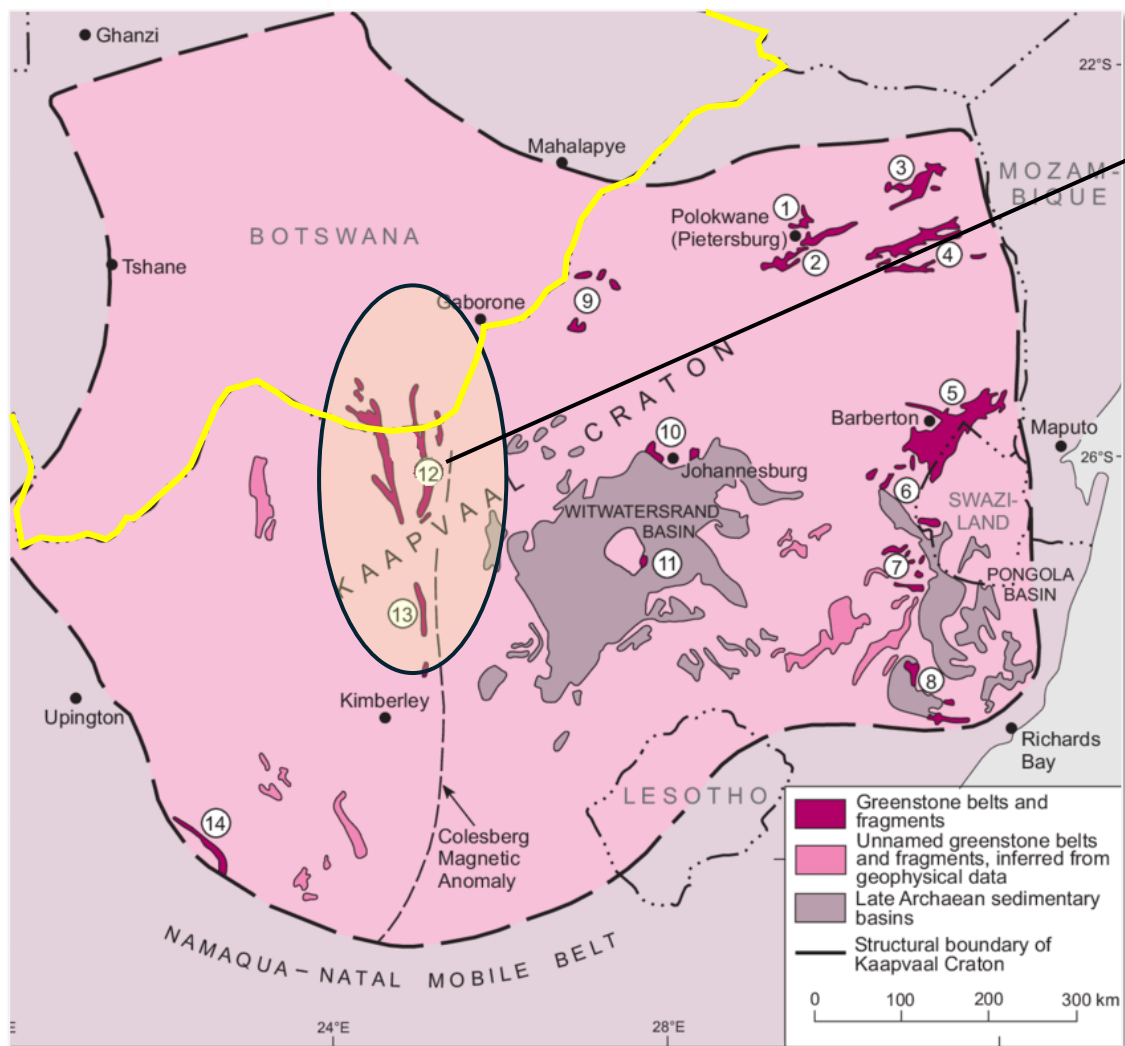
THE KRAAIPAN REGIONAL TECTONIC SETTING



THE COLESBURG LINEAMENT

- 3.1 to 2.9 Ga crustal-scale suture zone
- Formed when the Kimberley and Witwatersrand Terranes collided - the Colesberg Orogeny
- Proximity of **Kraaipan Project** to the Colesberg Lineament provides a compelling belt-scale exploration opportunity.
- Crustal scale structures are important indicators for Archean gold mineralization.

THE KAAPVAAL CRATON and the KRAAIPAN GREENSTONE BELT



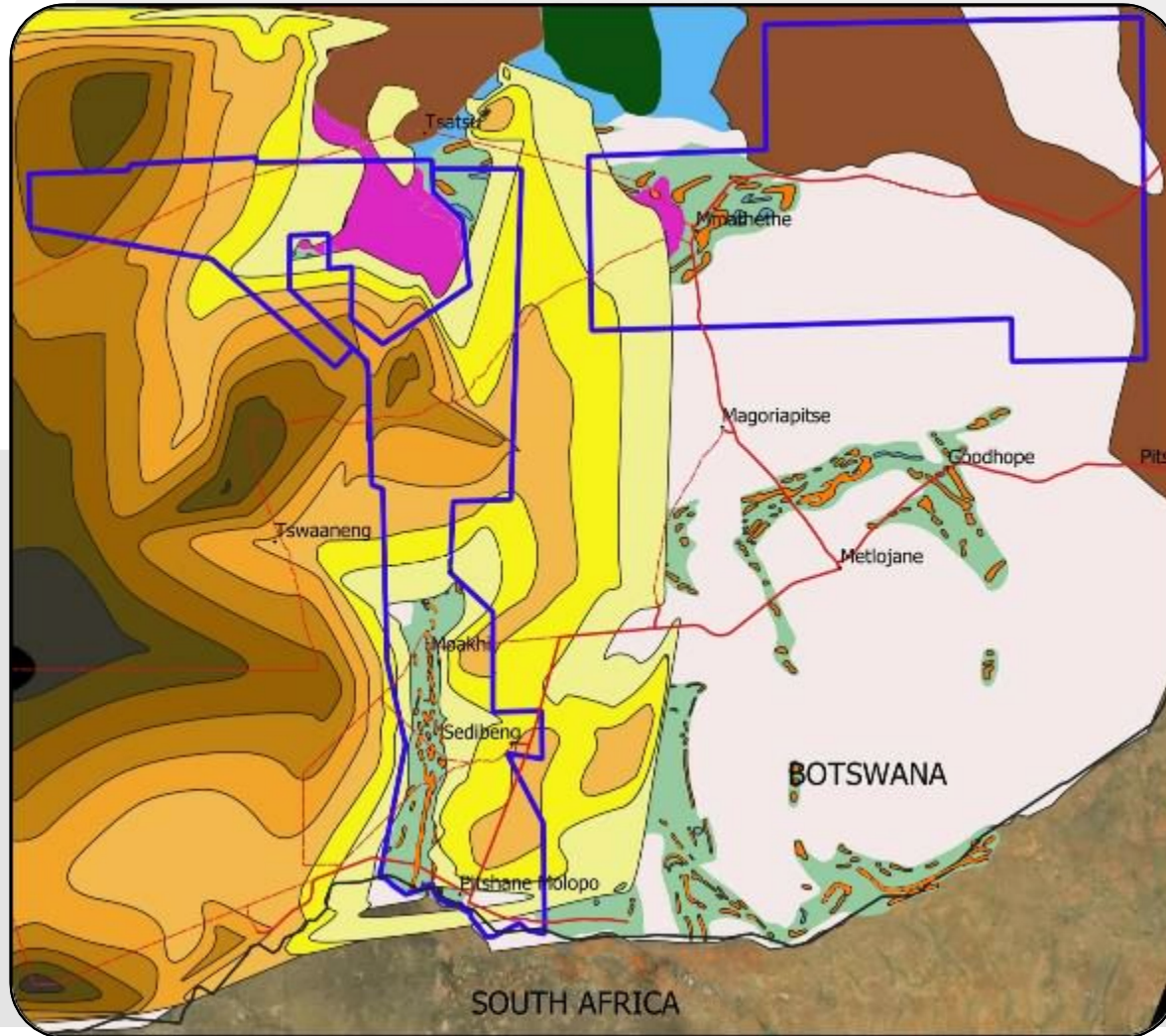
12

KalGold Mine, South Africa Mining the *Kalahari Goldridge* Deposit

- Located 40 km south of the Rockman license in Botswana in the same greenstone belt.
- Started mining in 1995 (acquired by Harmony in 1999).
- Multi-million-ounce banded iron formation (BIF)-hosted gold deposit with P&P Reserves ~0.39Moz @0.88g/t; additional M&I Resources ~1.35Moz @1.18g/t. Harmony Gold 2023; Technical Report Summary for Kalgold Mine, SA
- Open-pit operation producing from 75Koz to 45Koz annually.
- Mineralized areas extend beyond MRE limits.

Distribution of the various greenstone belts and fragments on the Kaapvaal Craton. 1. Rhenosterkoppies; 2. Pietersburg; 3. Giyani (Sutherland); 4. Murchison; 5. Barberton; 6. Weergevonden, Schapenburg; 7. Assegai, De Kraalen, Commondale; 8. Nondweni-Ilangwe; 9. Makoppa Dome; 10. Johannesburg Dome; 11. Vredefort Dome; 12. Kraaipan; 13. Amalia and 14. Marydale. Figure credit: Carl Robert Anhaeusser, Ph.D and D.Sc. University of the Witwatersrand, Johannesburg

North Arrow



Dr. Branko Corner created the Kraaipan geology map in 2020 as part of a large regional study. Airborne magnetic and gravity datasets were utilized to interpret the type of covered rocks. The model has been simplified somewhat for this slide.

Legend

- Botswana villages
- Tar road
- Gravel road
- African shapefile
- Rockman Kraaipan PLs

Kalahari isopach

- 10-20m
- 20-30m
- 30-40m
- 40-50m
- 50-60m
- 60-70m
- 70-80m
- 80-90m
- 90-100m

GEOLOGY LEGEND

- Transvaal Supergroup
- Plutonic Rocks
- Kraaipan Greenstone
- Dolomite
- Med to High Mag (BIF?)
- Mafic Intrusion
- Other Basement

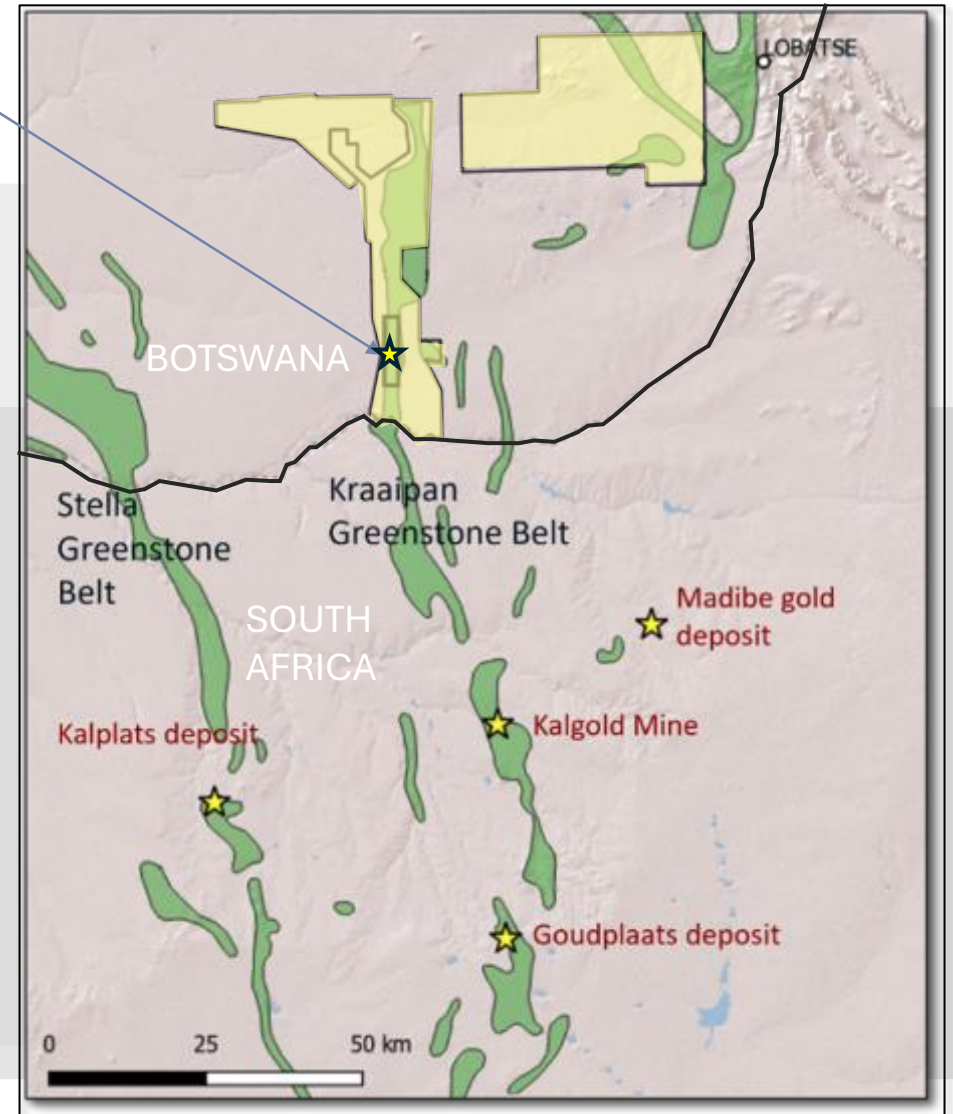


KRAAIPAN PROJECT – well endowed Greenstone Belt

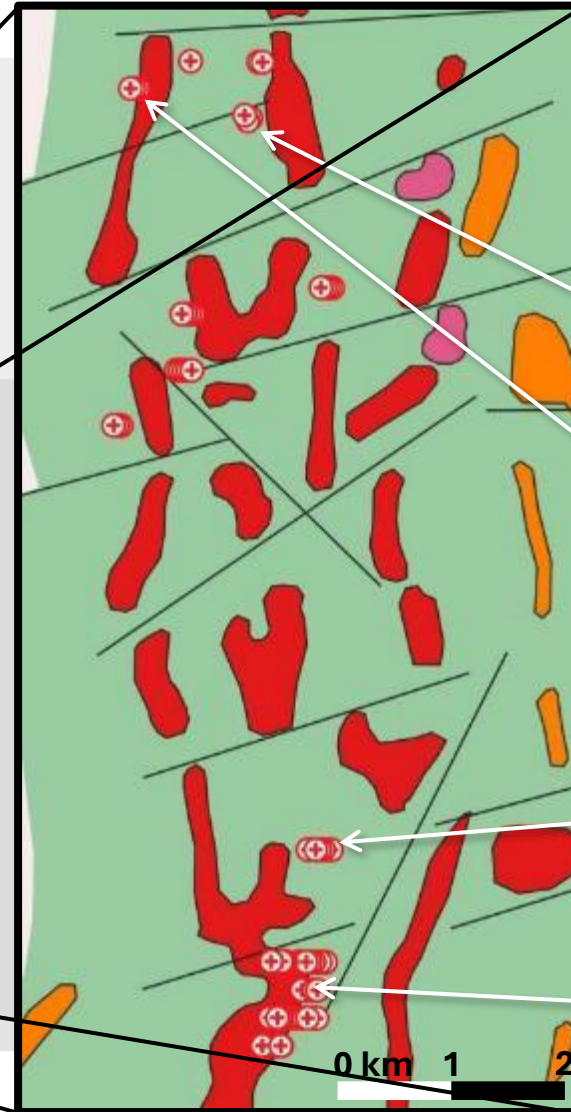
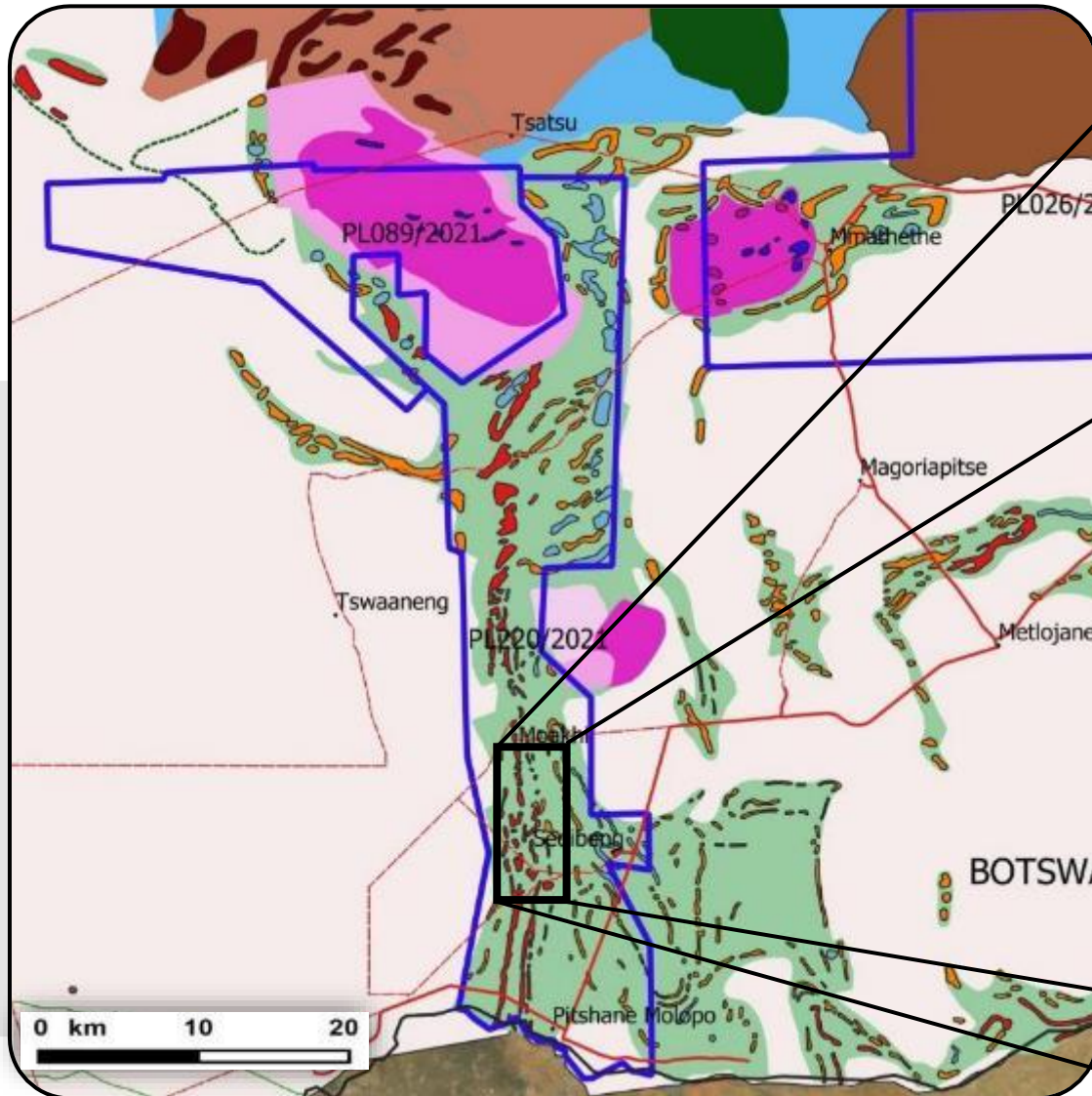
North Arrow
MINERALS INC.

RAB drill results:
13m @ 1.7 g/t Au
21m @ 1 g/t Au
3m @ 5.1 g/t Au

- ~1,266 km² mineral concession in southern Botswana covering **the entire ~60km northern extension of the Kraaipan Greenstone Belt (KGB);**
- On trend from the multi-million-ounce Kalgold Mine, South Africa; other greenstone belt related deposits in the area.
- > 80% of the KGB in Botswana is covered by Kalahari sands - poor exposure = underexplored opportunity!
- A first-pass 3,800m Rotary Air Blast (RAB) drill program in the late-90's confirmed anomalous gold mineralisation over a 10 km strike length of outcropping & interpreted iron formation.



KRAAIPAN PROJECT - HIGH-INTEREST AU TARGETS



Outcropping BIFs
1990's: Reunion Mining intersected high-interest gold mineralisation.

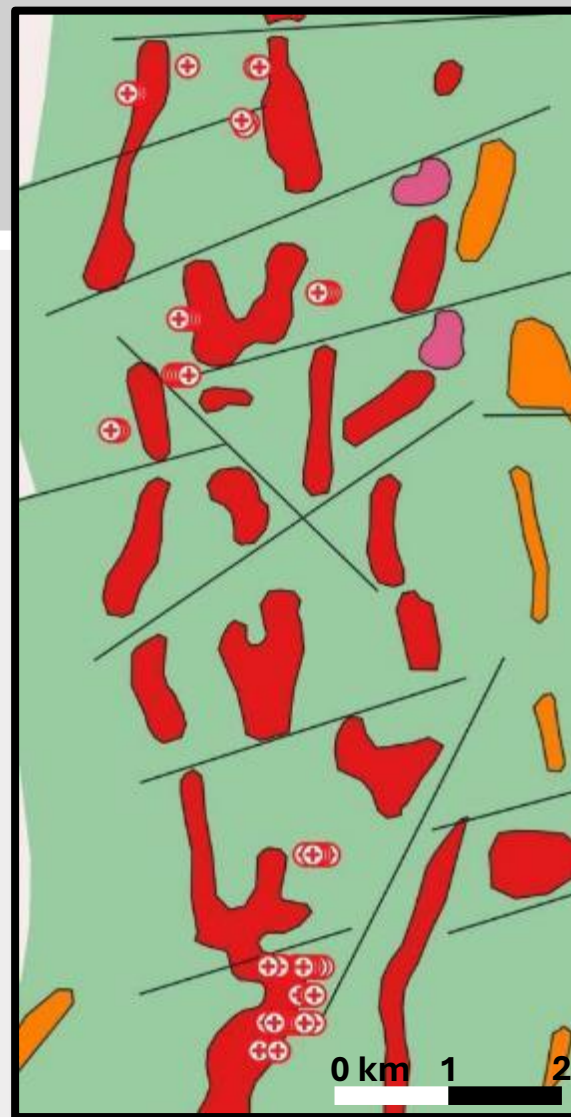
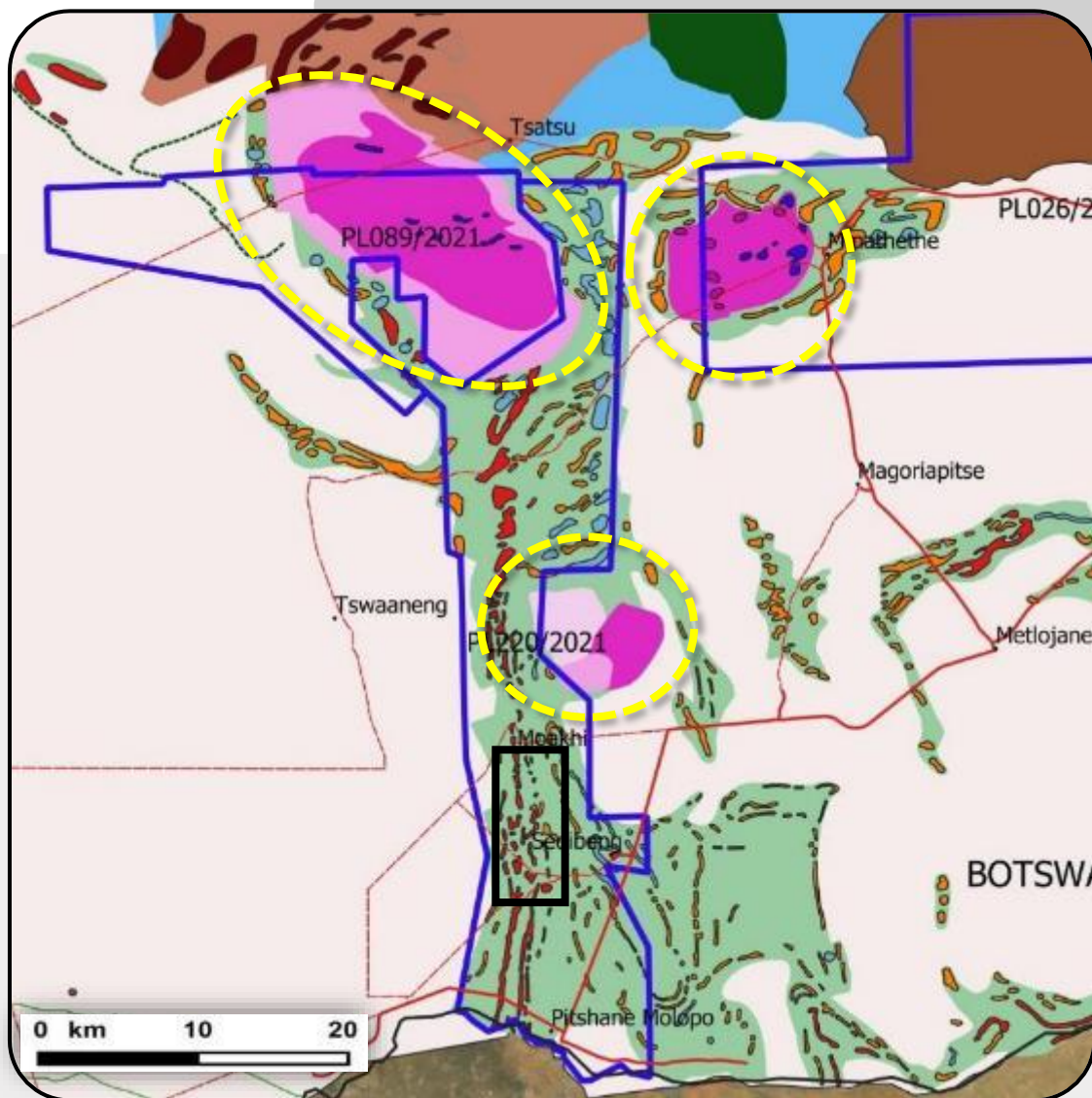
42m @ 0.6g/t Au incl. 21m @ 1g/t Au

9m @ 1.6g/t Au incl. 4m @ 2.3g/t Au

21m @ 1g/t Au incl. 5m @ 2.3g/t Au

13m @ 1.7g/t Au incl. 3m @ 5.1g/t Au

KRAAIPAN PROJECT - HIGH-INTEREST AU TARGETS



Prospective areas overlooked by past exploration:

- **Covered BIFs** – untested below Kalahari sands.
- **Major structures** – Key 2nd and 3rd order structures
- **Intrusive bodies** – contacts between the KGB and intrusive bodies (yellow circles)
- **Ni- Cu-PGE potential** in northern area of the project



In-house proprietary technologies to provide a first-time exploratory window into high potential, sand covered areas of Kraaipan Greenstone Belt

Remote Mapper UAV – High resolution geophysical data



Proprietary Drilling Services – Truck mounted RC drill, project-wide drivability, and all-season working conditions. Focus on collecting geochemical samples at the base of the Kalahari and testing priority structural bedrock targets. *Smaller RC drill platform currently being tested to increase holes per day.*



In-House Sample Processing – No line-up; quick turnaround for RC drill intersections.



Deep Machine Learning – proven technology for using success as a springboard for more. Once deposit defining criteria are understood DML can be applied (Ekati example).



KRAAIPAN OPTION DEAL WITH ROCKMAN – UP TO 80%

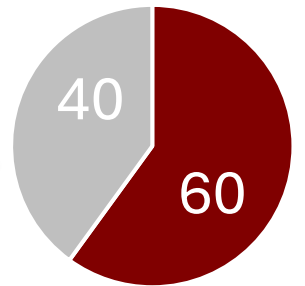
The 1st Option Agreement

North Arrow can earn a 60% interest by incurring US\$5M in exploration expenditures over three years as follows:

- i. Incur US\$1M in exploration expenditures (“EE”) by June 30, 2025 (firm commitment);
- ii. Incur an additional US\$2M in EE by June 30, 2026
- iii. Incur an additional US\$2M in EE by June 30, 2027.

Upon Notification of Exercise, NAR will issue 1,000,000 shares to Rockman to vest its 60% interest

First Option – NAR 60%



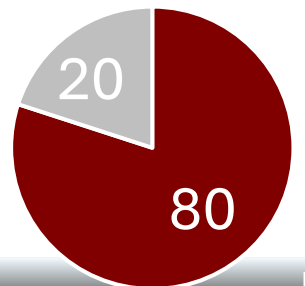
Rockman option to continue the Project as a 40/60 JV or...
Grant NAR the option to earn an additional 20% - the PEA Option

The PEA Option

NAR can earn an additional 20% interest by completing a Preliminary Economic Assessment (“PEA”) of a deposit as follows:

Upon delivery of the PEA, NAR will issue 2,000,000 in shares to Rockman to vest its additional 20%

PEA Option – NAR 80%



Drill test compelling Banded Iron Formation (BIF) & structural gold targets

- *24 RC drill holes completed sampling bedrock and basal Kalahari sands in new target area.
- High interest BIF within favorable structural settings
- Areas with ~10 to 40 m of Kalahari cover
- Top 5 to 6 target areas prioritized for overburden drilling (80 to 120 drillholes)
- Drillhole spacing of 50 m along drill fences perpendicular to structures of interest
- Drilling and sampling to base of Kalahari and upper bedrock intersections
- Analyze samples for Au by fire assay

**US\$ 1 Million
Program**

**work completed as of Nov 26, 2024*

Soil sampling

- Focused sampling grids over selected target areas – based on high-resolution magnetic data, outcrop mapping and historical sampling results – focus on areas with thin or no Kalahari cover
- ~25 sample spacing on 100 m spaced lines perpendicular to structure (~200-250 samples)

Remote Mapper – high-resolution magnetic

- Complete high-resolution (25 m line-spacing) magnetic coverage over areas permissive for surveying (~ 3,000 line km); additional ground mag to be conducted in no-fly areas.
- *905 line-kms completed to date.

Detailed interpretation and mapping

- Based on high-resolution magnetic data & field follow-up
- Update geological mapping and definition of prospective regions to identify & prioritise targets for drilling & sampling

Core drilling (H1 2025)

- Target key prospective targets to constrain geology and mineralization
- Program design based on results from overburden drilling and soil sampling

NAUJAAT PROJECT (60% NAR, 40% BURGUNDY)

North Arrow
MINERALS INC.



- ✓ **Jurisdiction** → Clear permitting path in Nunavut
- ✓ **Near tide water** → Freight costs 50% of NWT diamond mines
- ✓ **Large tonnage** → ~48 Mt down to 205m below surface
- ✓ **Low strip ratio** → <3:1 vs >10:1 for NWT diamond mines
- ✓ **Significant diamond inventory*** → ~26M contained carats
- ✓ **Blue sky potential** → Q1-4 at depth; 15 additional kimberlites

NAR LITHIUM PROJECTS IN THE NWT

Advanced/Discovery
Stage Lithium

1 LDG Lithium
(100%)
*Spodumene lithium
pegmatite project*

2 MacKay Lithium
(100%)
*Spodumene lithium
pegmatite project*

3 DeStaffany
(100%)
*Spodumene lithium
pegmatite project*

NWT Lithium Pegmatites
Found mostly within meta-sediments
(grey rocks) near to a fertile, highly
fractionated, S-type granites.

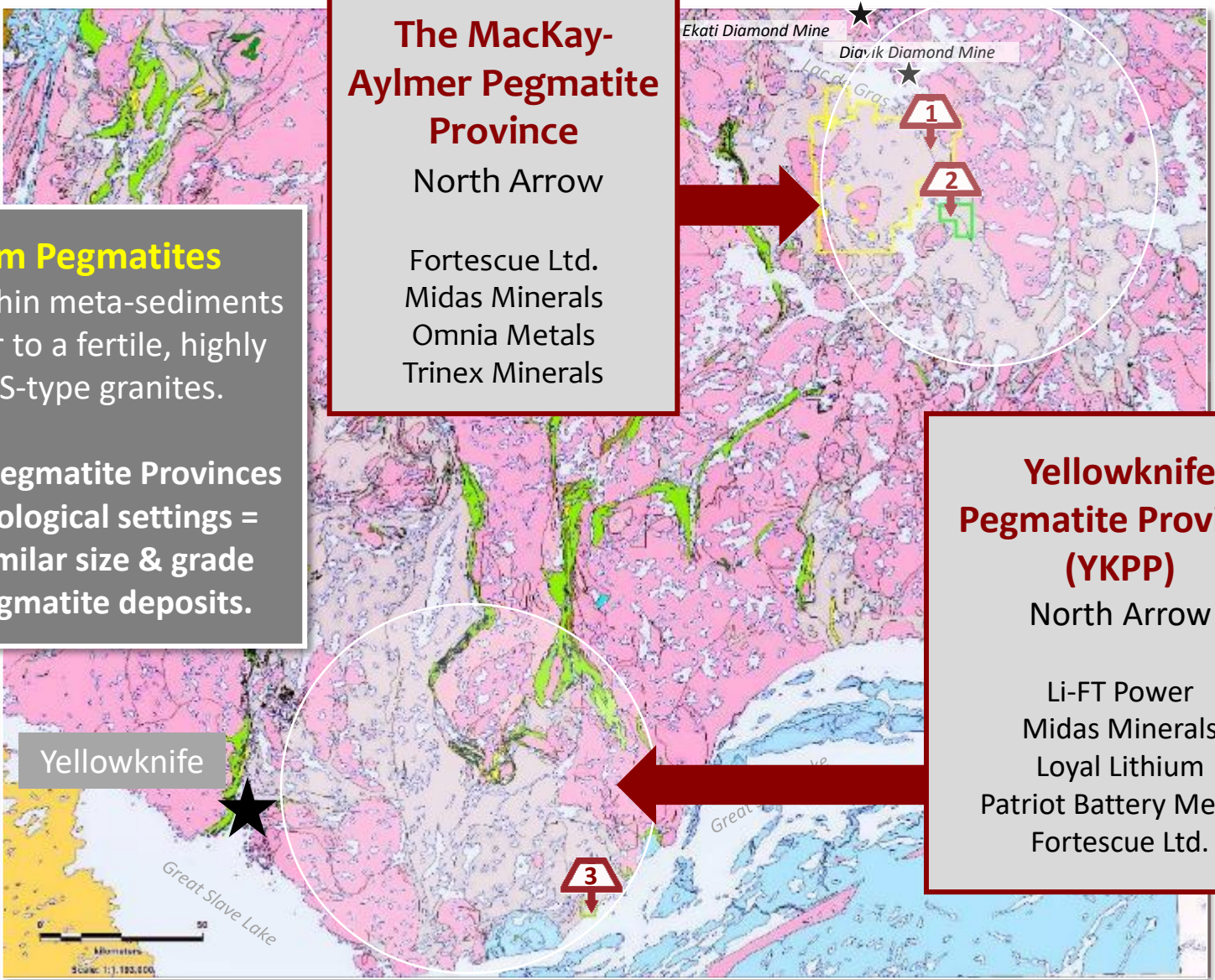
The YK and AM Pegmatite Provinces
are identical geological settings =
potential for similar size & grade
spodumene pegmatite deposits.

**The MacKay-
Aylmer Pegmatite
Province**
North Arrow

Fortescue Ltd.
Midas Minerals
Omnia Metals
Trinex Minerals

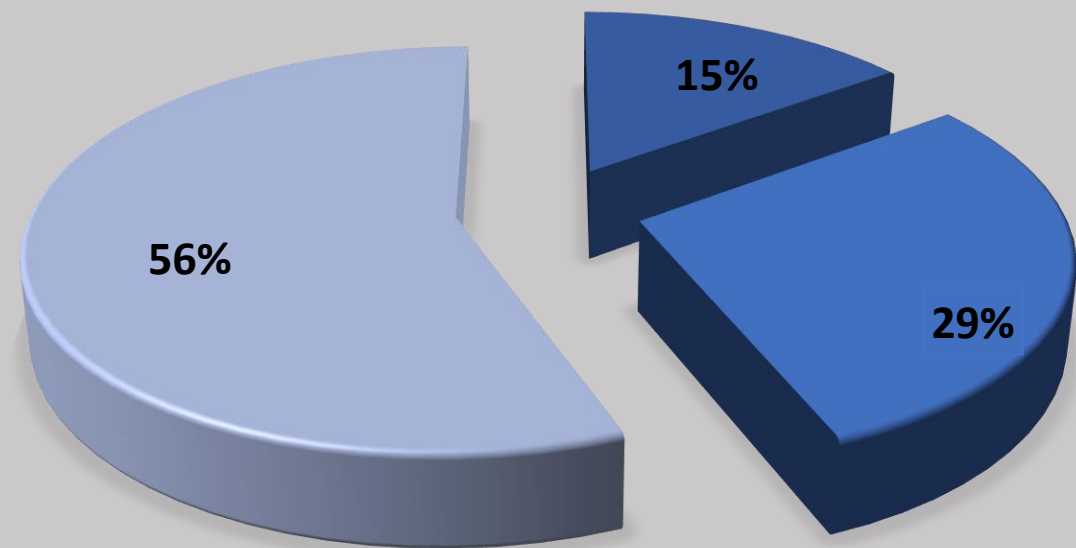
**Yellowknife
Pegmatite Province
(YKPP)**
North Arrow

Li-FT Power
Midas Minerals
Loyal Lithium
Patriot Battery Metals
Fortescue Ltd.





North Arrow MINERALS INC.



■ Management and Directors
■ Key Shareholders
■ Float

POST FINANCING SHARE STRUCTURE

Issued and Outstanding	28,580,224
Options	1,055,000
Warrants	10,546,887*
Fully Diluted	40,182,111

*1.68 M expire by December 2024;
3.00 M expire May 2025.

- Numbers above include the LIFE financing closed October 17th, 2024
- 11,000,000 shares at \$0.20 for proceeds of \$2.2 million.
- Each share purchased included a half-warrant priced at \$0.30 for 18 months.

- ❖ A highly experienced management and geological team with a long history of **mine-finding experience** in Canada and Africa
- ❖ **Kraaipan Greenstone belt** – unique exploration opportunity in Botswana with Rockman Resources
- ❖ Can earn **60% by investing US\$5M over three years**
- ❖ Can earn **80% by carrying Rockman to a PEA**
- ❖ **Rockman** – strong technical and practical team with in-country experience including access to cost effective exploration solutions using deep machine learning, drone geophysics and portable drilling technology





INVESTING IN...

North Arrow MINERALS INC.

- ❖ Additional Canadian exploration upside
- ❖ Three permitted & drill ready, spodumene-bearing pegmatite lithium properties near infrastructure in the NWT
- ❖ Legacy diamond projects in NWT, Nunavut and Saskatchewan
- ❖ Including 60% interest in Naujaat project – host to unique, high value fancy orange yellow diamonds





North Arrow

MINERALS INC.

ROCKMAN
— RESOURCES LTD —

Ken Armstrong

President & CEO

Eira Thomas

Executive Chair

TSXV: NAR

Tel: +1.604.668.8354
info@northarrowminerals.com

www.northarrowminerals.com

Nick Thomas

*Community and Investor
Relations Manager*