



TSXV: NAR

**North Arrow**  
MINERALS INC.

# Hope Bay ORO Gold Project Nunavut

*March 2017*



# CAUTIONARY STATEMENT

**North Arrow**

MINERALS INC.

## **Forward Looking Information**

This presentation contains projections and forward looking information that involve various risks and uncertainties, including, without limitation, statements regarding the potential extent of mineralization, resources, reserves, exploration results and plans and objectives of North Arrow Minerals Inc. These risks and uncertainties include, but are not restricted to, the amount of geological data available, the uncertain reliability of drilling results and geophysical and geological data and the interpretation thereof and the need for adequate financing for future exploration and development efforts. There can be no assurance that such statements will prove to be accurate. Actual results and future events could differ materially from those anticipated in such statements. These and all subsequent written and oral forward-looking statements are based on the estimates and opinions of management on the dates they are made and are expressly qualified in their entirety by this notice. The Company assumes no obligation to update forward looking statements should circumstances or management's estimates or opinions change.

## **Qualified Person under NI 43-101**

Disclosure of a scientific or technical nature related to North Arrow's projects in this presentation has been reviewed and approved by Ken Armstrong, P.Geo. President and CEO of North Arrow and a Qualified Person under NI 43-101.



# CORPORATE OVERVIEW – PROJECTS

## North Arrow

MINERALS INC.

### Advanced Stage

*Assessing a known kimberlite or diamond deposit*

1. Naujaat (Qilalugaq) Project (100%)

### Discovery Stage

*Next stage of diamond exploration could lead to discovery*

- 1) Mel Project (100%)
- 2) Loki Project (100%)
- 3) LDG Project (~40% NAR with DDC)
- 4) Pikoo Project (100%)
- 5) Luxx Project (100%)

### Grassroots

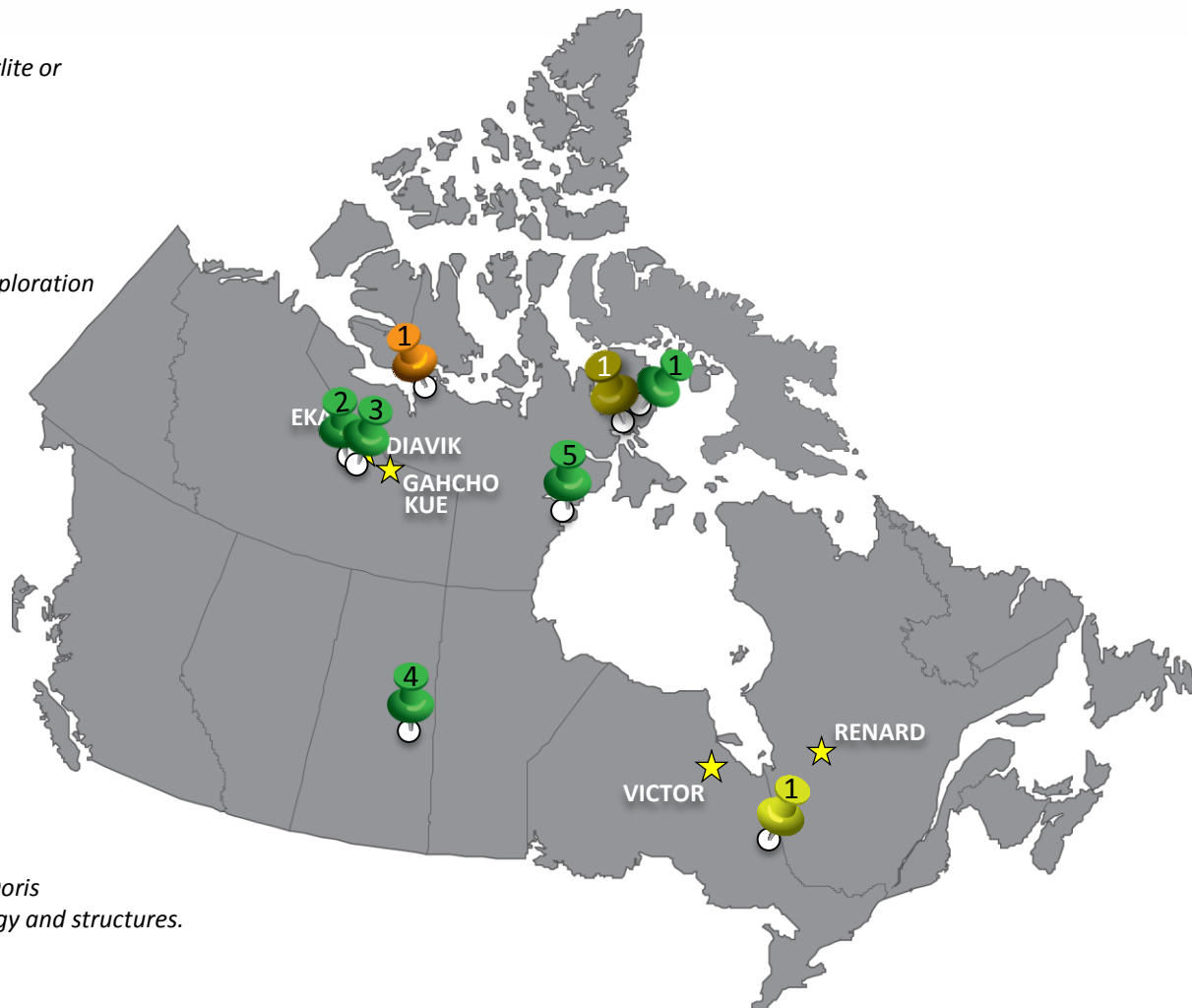
*Target development*

1. Timiskaming Project (80% with SWY)

### Brownfields Gold

*Property within 3km of Doris Gold Mine; similar geology and structures.*

1. Hope Bay Project (100%)







# GOLD DEPOSITS OF THE HOPE BAY VOLCANIC BELT

**North Arrow**

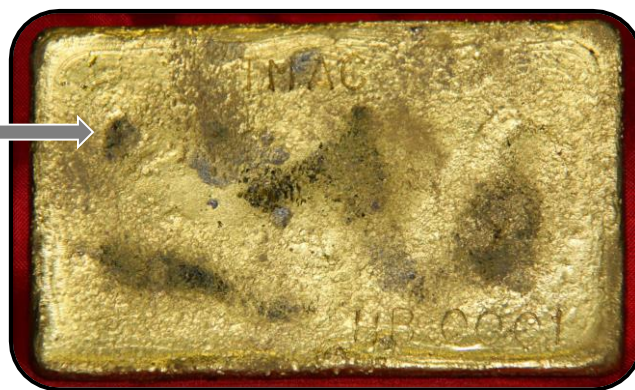
MINERALS INC.

## Hope Bay Volcanic Belt

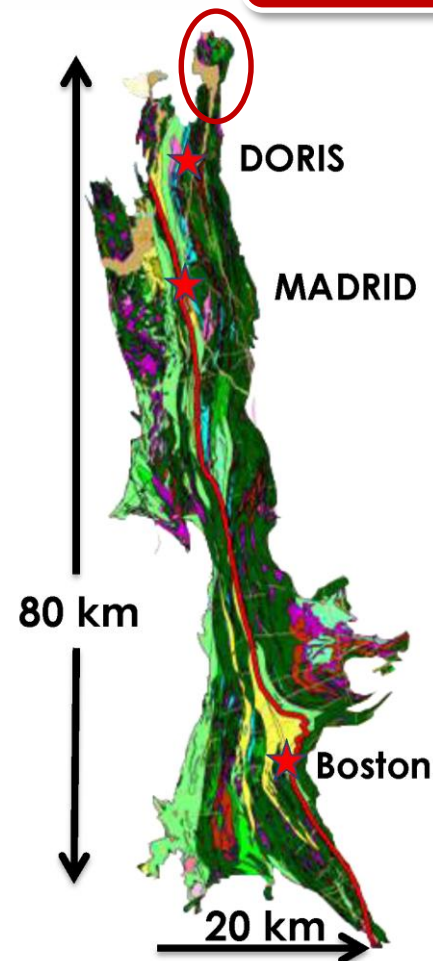
- Controlled by TMAC Resources
- Includes Boston, Madrid and Doris deposits
- Total Measured and Indicated Resource 15.2 Mt @ 9.2 g/t Au\*
- Total Inferred Resource: 6.0 Mt @ 7.4 g/t Au\*

## The Doris Deposit

- Doris is the northern most deposit and on tidewater
- First gold poured at Doris February 7, 2017
- Commercial production expected within 2017
- Proven & Probable Reserve 2.343 Mt @ 9.8 g/t\*



Hope Bay ORO  
Gold Project





# HOPE BAY ORO PROJECT, NU

## North Arrow

MINERALS INC.

- ORO property ~3km north of TMAC's Doris Gold Mine.
- Host stratigraphy to the Doris deposit extends north onto ORO property.
- ORO vs Doris: **i) same rocks ii) same structural setting iii) same mineralization style;**
- Multiple showings including Ida Point – 5.48 g/t over 5.96 m; 8.0 g/t over 4.2m.



Ida Point Showing



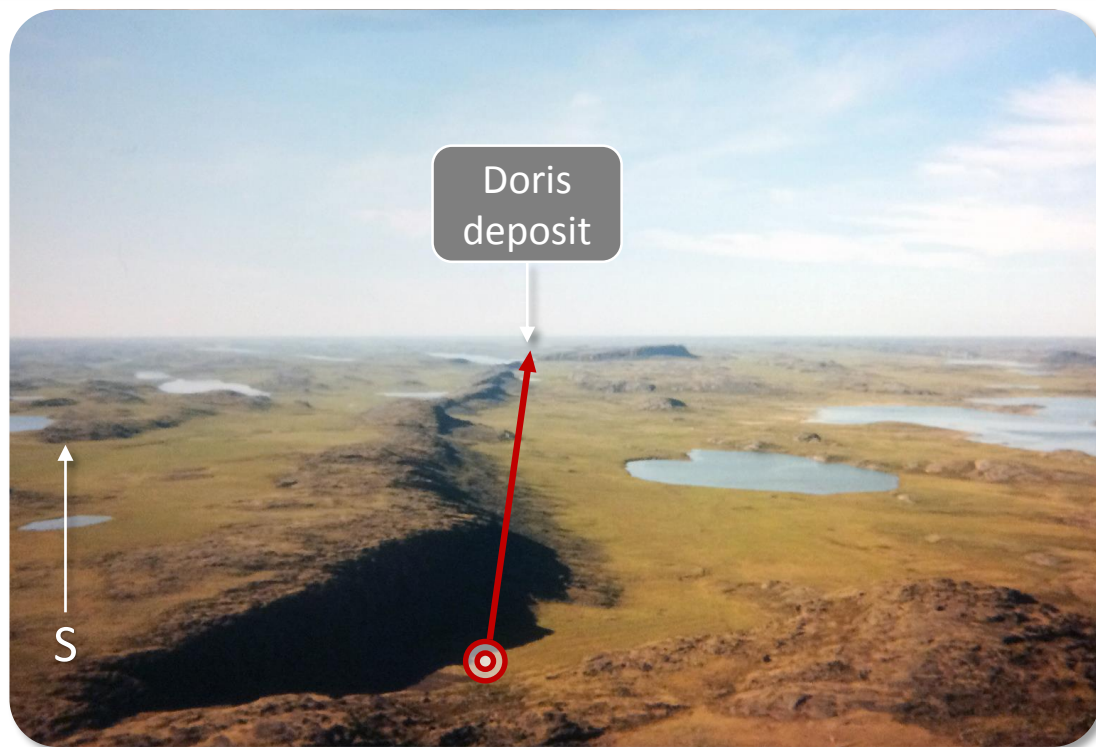




# HOPE BAY ORO: PERSPECTIVE TO DORIS

**North Arrow**

MINERALS INC.



Hope Bay ORO looking south towards Doris

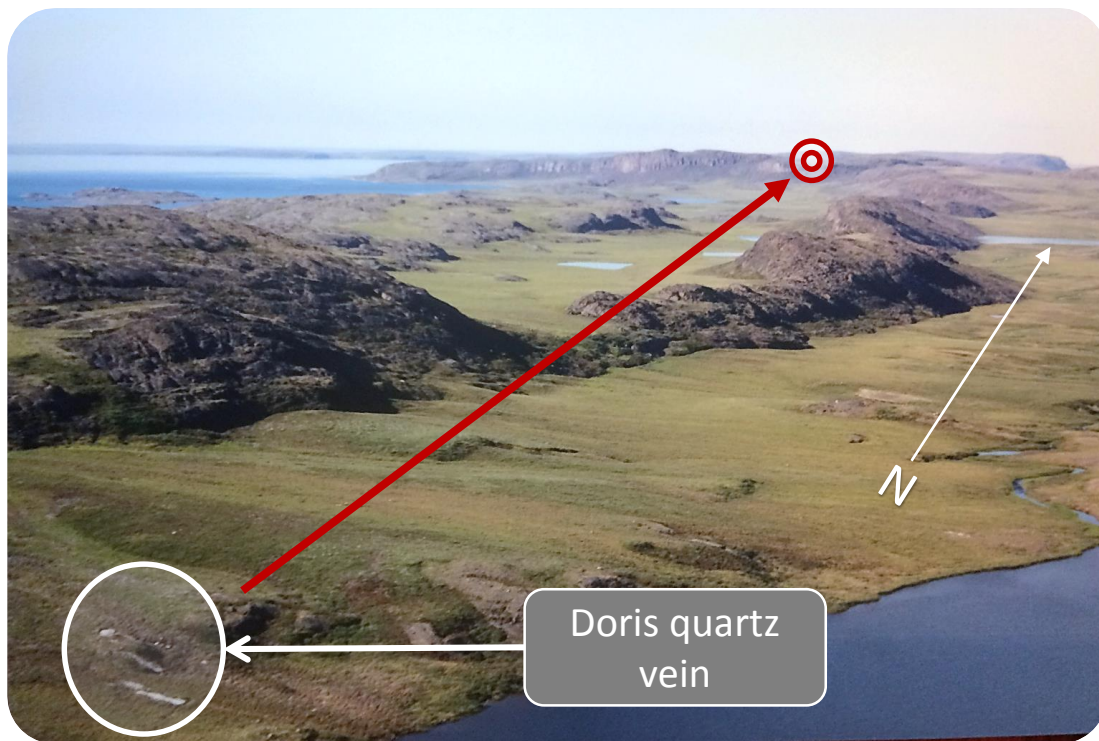




# HOPE BAY ORO: PERSPECTIVE FROM DORIS

**North Arrow**

MINERALS INC.



Doris looking north towards Hope Bay ORO



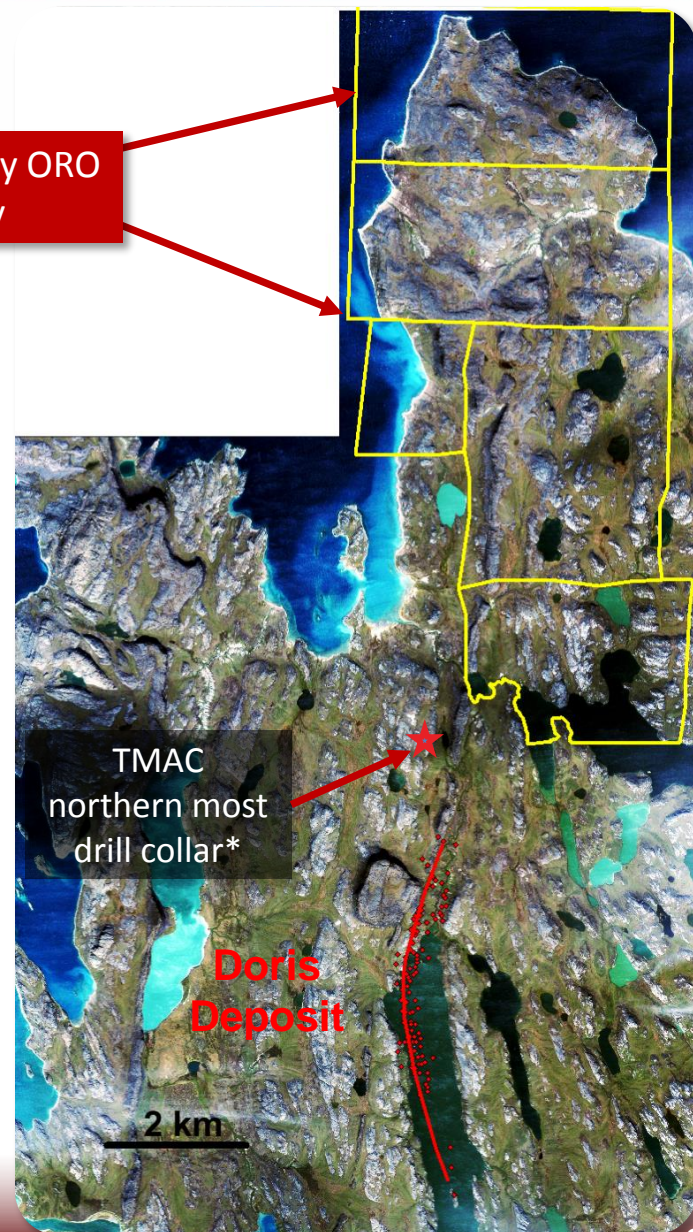


# HOPE BAY ORO PROJECT – DORIS VOLCANICS

**North Arrow**  
MINERALS INC.

- The Doris deposit is hosted within the 'Doris Volcanics' – a distinct package of high Fe/Ti-Tholeiite and more typical Mg-Tholeiite
- Doris gold mineralization is located at the contact between Fe-Tholeiite and Mg-Tholeiite
- Gold mineralization has been traced northwards from Doris along this contact (e.g. TMAC's BTB zone)
- Doris Fe-Tholeiites can be traced northwards onto the ORO property representing a prospective target horizon

Hope Bay ORO  
Property







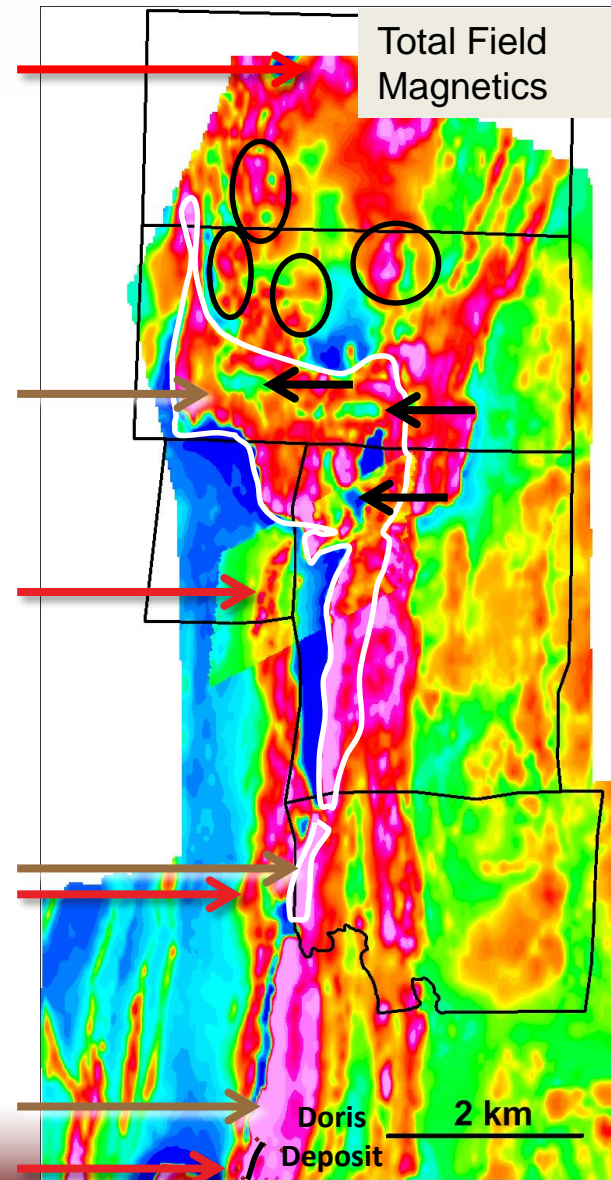
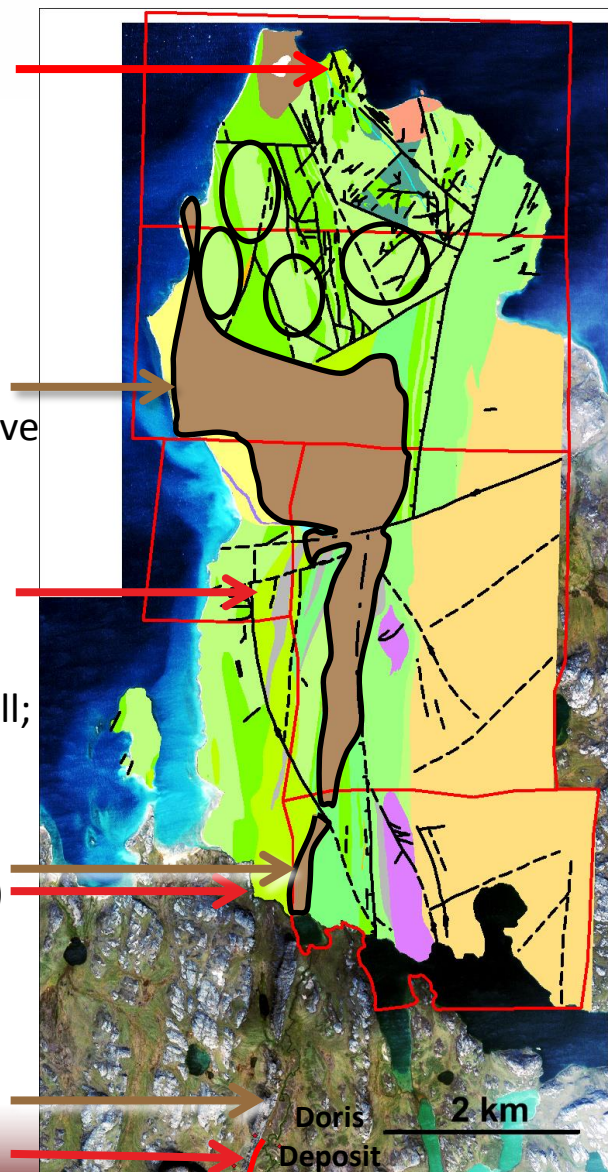
# SAME ROCKS – IRON-THOLEIITES

## North Arrow

MINERALS INC.

### Geology and Structures vs Total Field Magnetics

- Franklin sill diabase →
- Fe-Tholeiites →
- Geophysics and mapping have traced Doris volcanics (Fe-Tholeiites) northwards onto ORO property
- Geochem confirms Fe-Tholeiites north of Franklin sill; could be more (○)
- Thinning of, or windows through, Franklin sill (←) = target areas to test for prospective stratigraphy (Fe-Tholeiite / Mg-Tholeiite contacts)

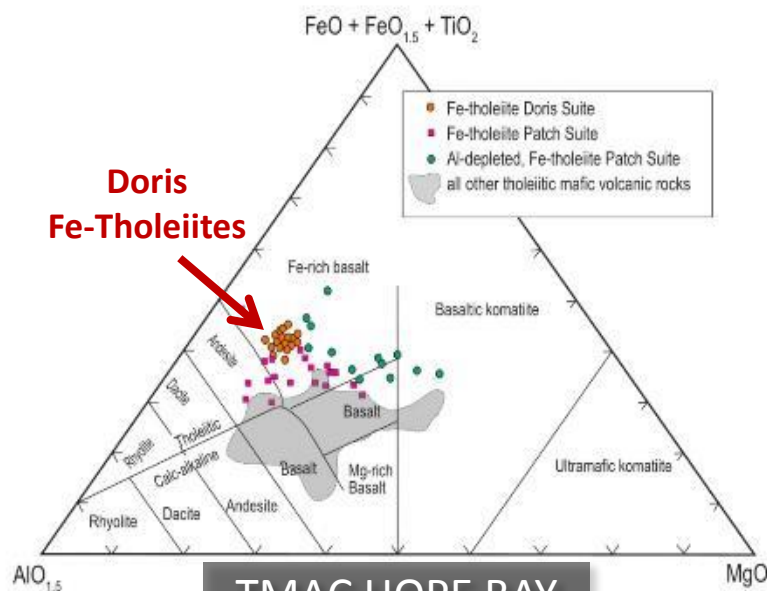




# ORO vs DORIS GEOCHEMISTRY: SAME ROCKS

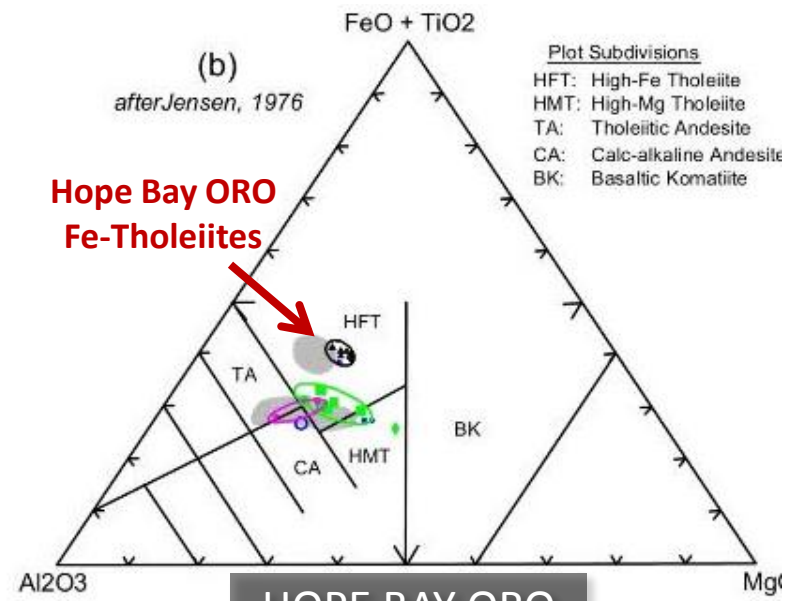
## North Arrow

MINERALS INC.



TMAC HOPE BAY

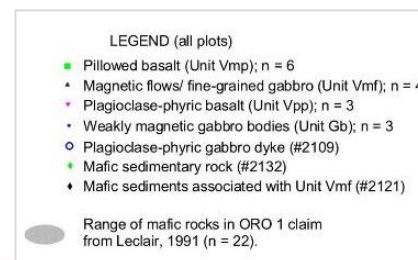
Sherlock et al, 2012



HOPE BAY ORO

Stubley 2001

Hope Bay ORO Fe-Tholeiites have the same geochemistry as Doris Fe-Tholeiites





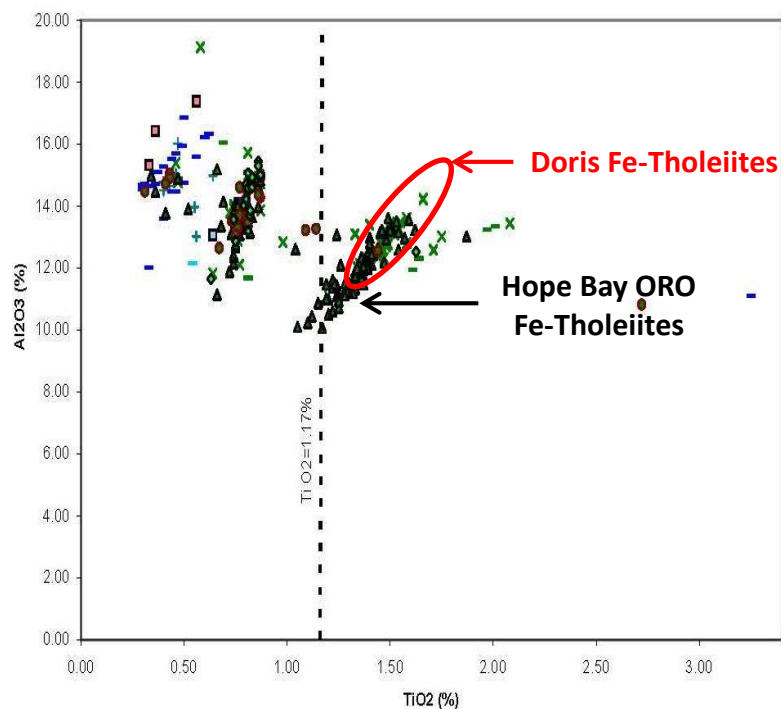


# ORO vs DORIS GEOCHEMISTRY: SAME ROCKS

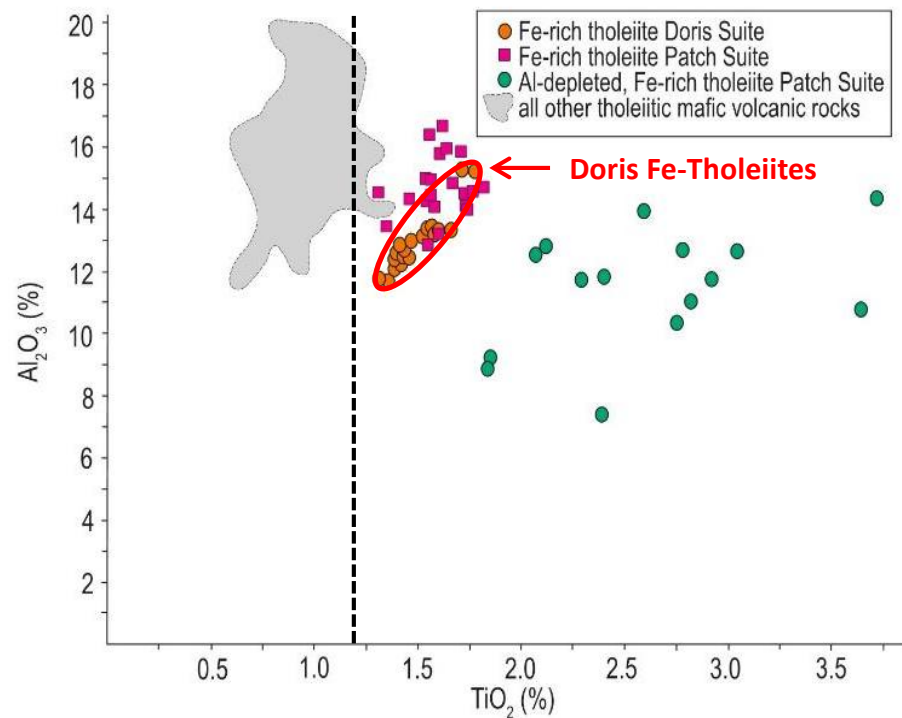
**North Arrow**

MINERALS INC.

$\text{Al}_2\text{O}_3 / \text{TiO}_2$  of Fe-Tholeiites identified in drill core at Hope Bay ORO property are the same as the Doris Volcanics



HOPE BAY ORO



TMAC HOPE BAY

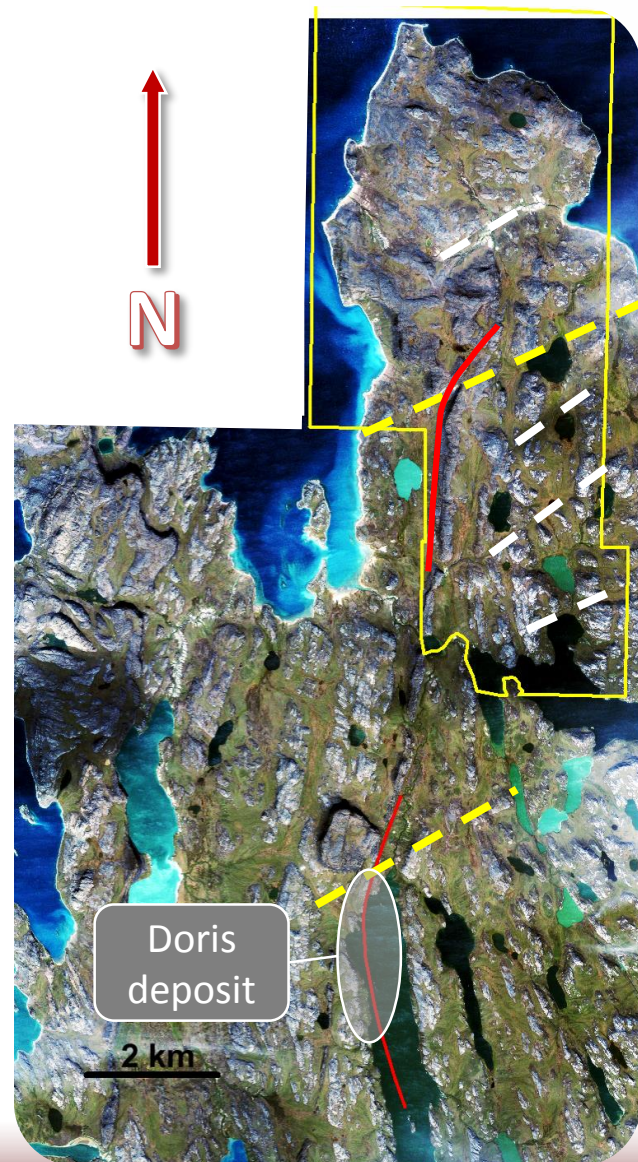


# ORO vs DORIS: SAME STRUCTURAL SETTING

**North Arrow**

MINERALS INC.

- Doris mineralization occurs at a NE flexure of the host volcanics coincident with a regional NE trending structure.
- A similar NE flexure of the Doris Volcanics within the Hope Bay ORO property (“ORO 5 area”) coincident with a NE trending structure = POTENTIAL TARGET AREA FOR GOLD MINERALIZATION
- Hope Bay ORO hosts several additional NE trending structures throughout the property = POTENTIAL TARGET AREAS WHERE COINCIDENT WITH FE-THOLEIITE / MG-THOLEIITE CONTACTS







# ORO vs DORIS: SAME STYLE OF MINERALIZATION

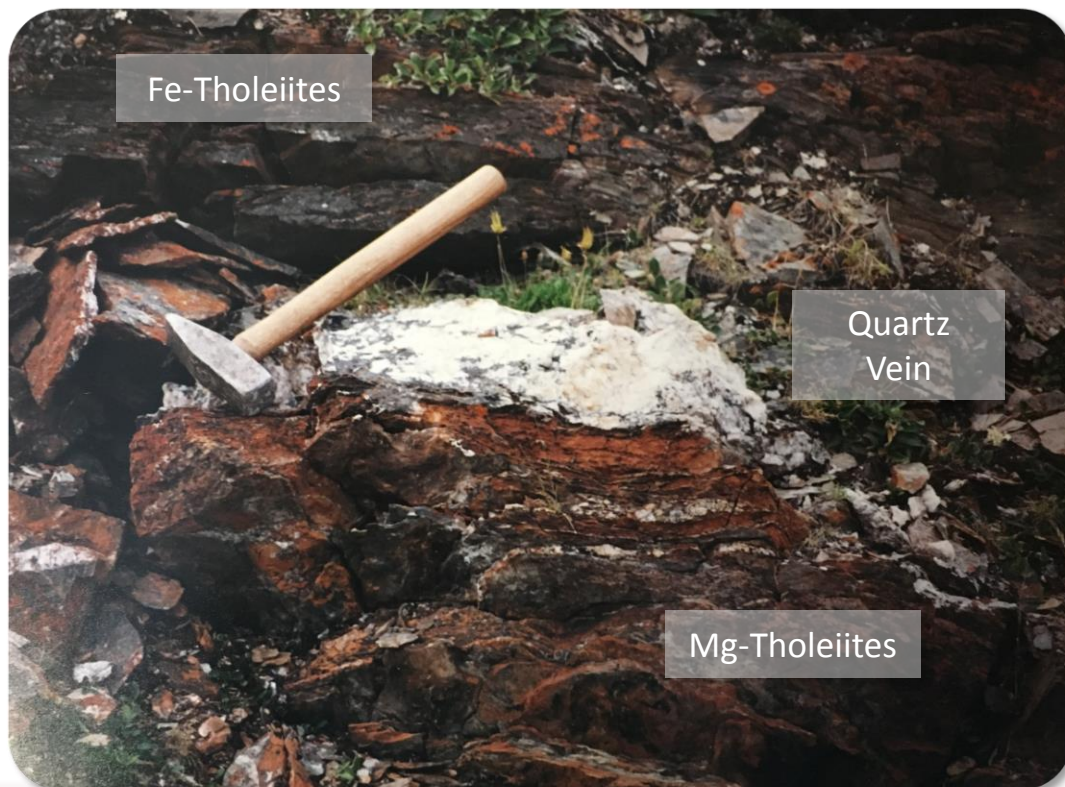
**North Arrow**

MINERALS INC.



Doris Quartz Vein

- Gold mineralization at Doris is located within quartz veins at Fe-Tholeiite and Mg-Tholeiite contacts
- Gold mineralization has also been identified at Fe-Tholeiite / Mg-Tholeiite contacts in Hope Bay ORO 5 area



Gold Showing: Hope Bay ORO 5 area





# ORO vs DORIS: SAME STYLE OF MINERALIZATION

**North Arrow**  
MINERALS INC.

Gold Mineralization at Doris



Gold Mineralization at H4 Quartz Vein,  
Hope Bay ORO



Gold mineralization at Doris associated with tourmaline-pyrite septa within quartz veins. Similar septa identified at ORO H4 Quartz Vein.



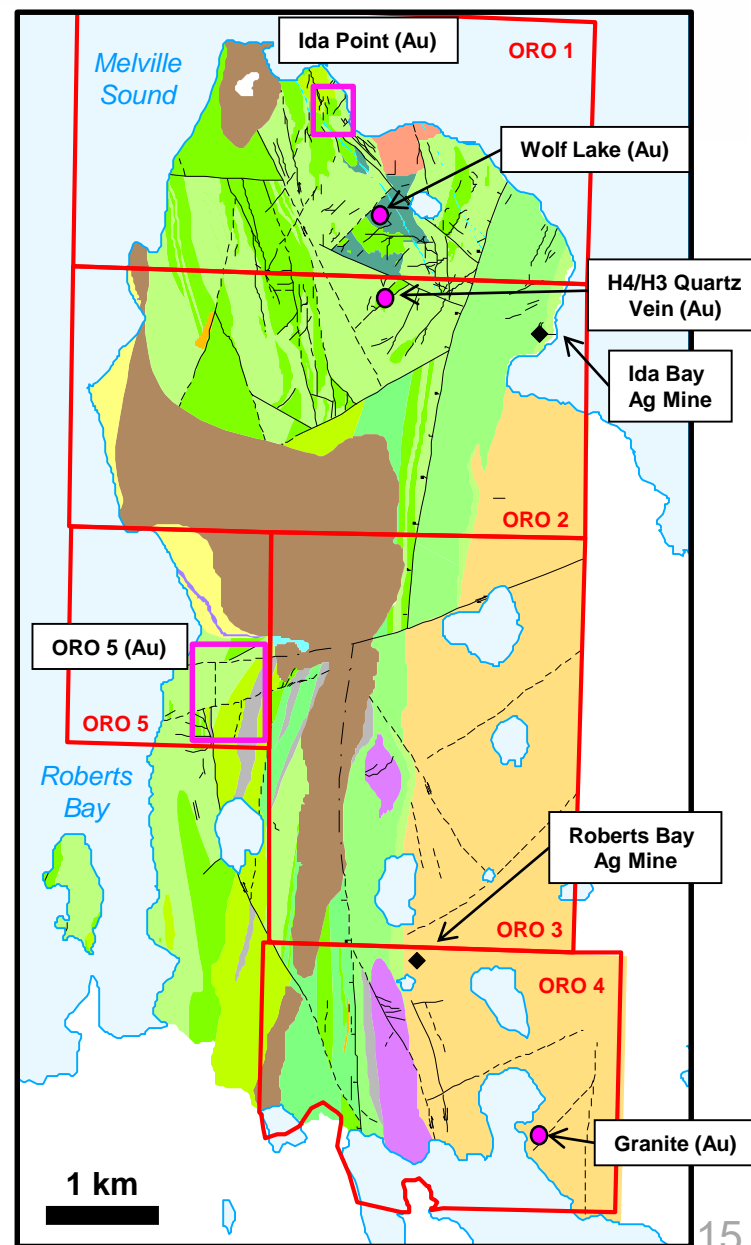


# HOPE BAY ORO - GEOLOGY & SHOWINGS

## North Arrow

MINERALS INC.

- **Ida Point Showing:** ~600 m drill tested NE trending Elu shear zone returned 7.55 m of 4.91 g/t Au including 4.2 m of 8.0 g/t Au and 2 m of 20.22 g/t Au from two drill holes in 2011. Remains open to the N, S and down dip.
- **ORO 5:** Contains the exact geological setting which hosts the Doris deposit – NE flexure of the mapped extension of Doris Volcanics coincident with a NE trending structure. Limited drilling confirmed anomalous gold at Fe- and Mg-tholeiite contacts.
- **Granite Showing:** Gold mineralization within the same NE trending structure that coincides with Doris deposit to the SW.
- **Silver Deposits:** Two small high grade native ('Cobalt-type') silver deposits were mined in the 1970's. Potential for additional silver deposits within the property.



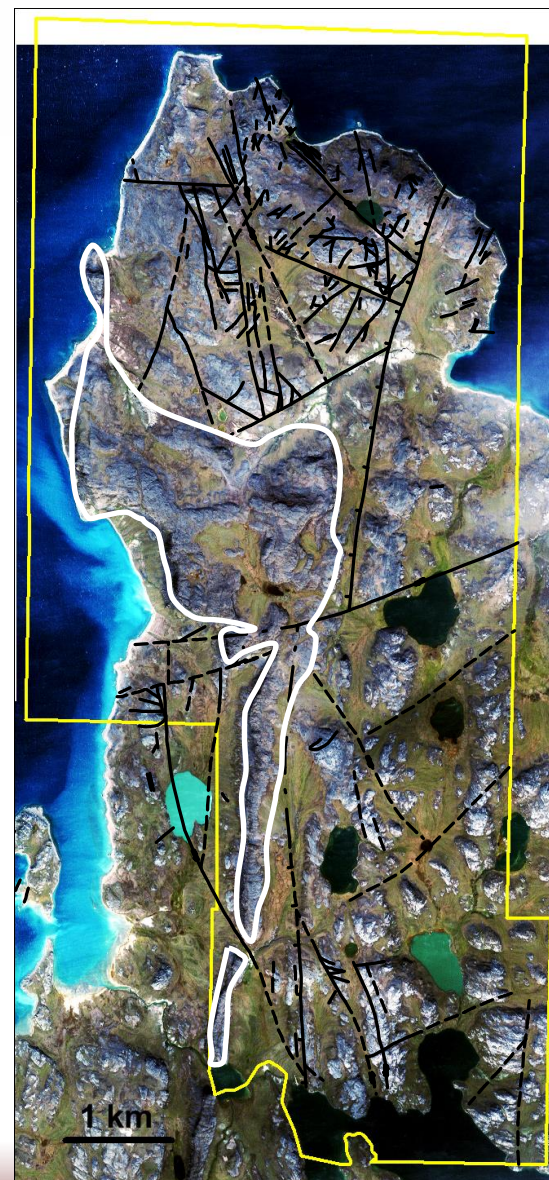


# EXPLORATION UPSIDE

## North Arrow

MINERALS INC.

- **Structural Complexity:** Property contains many mapped and interpreted faults, folds, structures and overburden covered areas that could represent larger structural features, all with the potential to host unrecognized gold mineralization.
- **Significant Overburden Covered Areas:** Extensive linear overburden filled valleys could cover prospective lithological contacts between Fe-Tholeiites and Mg-Tholeiites.
- **What's Beneath the Franklin sill?:** The thin, shallow dipping sill may cover the on-strike northward continuation of the Doris Volcanics from ORO 5.
- **Way forward:** Focus on lithogeochemistry to identify prospective overburden covered lithological contacts = DRILL TARGETS.

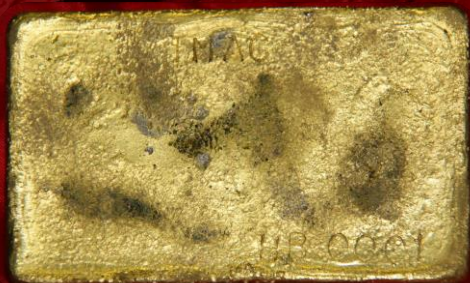






# North Arrow

MINERALS INC.



**TSXV: NAR**

**Ken Armstrong**  
*President & CEO*

**Nick Thomas**  
*Community and Investor  
Relations Manager*

Suite 960-789 West Pender Street  
Vancouver, BC  
Canada V6C 1H2  
Tel: +1.604.668.8354  
Fax: +1.604.336.4813

[info@northarrowminerals.com](mailto:info@northarrowminerals.com)

@narminerals



northarrowminerals



[www.northarrowminerals.com](http://www.northarrowminerals.com)

