



TSXV:NAR

North Arrow

MINERALS INC.

Exploring Diamond Opportunities in Canada

*PDAC Update
March 6-9, 2016*



CAUTIONARY STATEMENT

North Arrow

MINERALS INC.

**Forward
Looking
Information**

This presentation contains projections and forward looking information that involve various risks and uncertainties, including, without limitation, statements regarding the potential extent of mineralization, resources, reserves, exploration results and plans and objectives of North Arrow Minerals Inc. These risks and uncertainties include, but are not restricted to, the amount of geological data available, the uncertain reliability of drilling results and geophysical and geological data and the interpretation thereof and the need for adequate financing for future exploration and development efforts. There can be no assurance that such statements will prove to be accurate. Actual results and future events could differ materially from those anticipated in such statements. These and all subsequent written and oral forward-looking statements are based on the estimates and opinions of management on the dates they are made and are expressly qualified in their entirety by this notice. The Company assumes no obligation to update forward looking statements should circumstances or management's estimates or opinions change.

**Qualified
Person under
NI 43-101**

Disclosure of a scientific or technical nature related to North Arrow's projects in this presentation has been reviewed and approved by Ken Armstrong, P.Geo. President and CEO of North Arrow and a Qualified Person under NI 43-101.



THE OPPORTUNITY

North Arrow

MINERALS INC.

- **EXPERIENCED TEAM** – Successful exploration and development (Aber; Diavik; Lucara; Stornoway; SouthernEra)
- **LEVERAGED EVALUATION** - Canadian diamond projects developed over years of exploration by past companies at costs in excess of \$40 million dollars
- **SOLID FINANCIAL BACKING** - >\$18M raised over last two and a half years while maintaining an attractive share structure - ~54.2M shares o/s; ~59.5M shares f/d
- **NEW DISCOVERIES** – Discovered Canada’s newest diamond district at Pikoo Project, SK; more kimberlites to be discovered here and other NAR properties
- **PROJECT PORTFOLIO** – Seven core project areas
- **PURE DIAMOND PLAY** – Solely focused on diamond projects located in Canada at a time where diamond fundamentals are robust and predicted to remain so for the foreseeable future



North Arrow

MINERALS INC.

Corporate Highlights

■ Capitalization

Listing:	TSX Venture - NAR	
Issued:	54.2 M	
Options:	4.3 M	
Warrants:	1.0 M	\$0.25 & \$0.65
Fully diluted:	59.5 M	
Estimated Working Capital:	\$4.5 M	

■ Main Shareholders

Management/Directors	~16.5 %
Zebra Holdings & Investments	~18.3%

controlled by a trust settled by the late Adolf H. Lundin



CORPORATE OVERVIEW - PEOPLE

North Arrow

MINERALS INC.

Management Highlights

D. Grenville Thomas (Chairman) Founder of Aber Resources (now Dominion Diamond Corporation), discoverer of the Diavik Diamond Mine and 2009 Canadian Mining Hall of Fame inductee.

Ken Armstrong P.Geo.(ON) (President, CEO, Director and Qualified Person under NI 43-101) Diamond exploration and evaluation experience with Diavik Diamond Mines Inc., Aber Resources, De Beers, Navigator Exploration, and Stornoway Diamond Corporation.

Christopher Jennings (Director) Founder of SouthernEra Diamonds Inc., consultant to Aber Resources and has held positions with numerous companies including International Corona Corp., BP Minerals (Canada) and Falconbridge Ltd.

William Lamb (Director) President and CEO of Lucara Diamond Corp., 20 years project development experience with Lucara, De Beers, Kvaerner and Rand Mines.

Blair Murdoch (Director) More than thirty years experience in senior management of private and public companies.

Eira M. Thomas (Advisor) Extensive diamond exploration and development experience in Canada and Africa. Has served as an officer and director of Aber Resources and Stornoway Diamond Corporation. Currently CEO of Kaminak Gold Corporation and a director of Suncor and Lucara Diamond Corp.



CORPORATE OVERVIEW – PROJECTS

North Arrow

MINERALS INC.

Redemption (NT)

- Near Diavik & Ekati mines
- Unexplained KIM trains
- Earning 55% from Arctic Star
- Drilling March/April 2016

Lac de Gras (NT)

- >300,000 acres
- Near Diavik & Ekati mines
- 45/55 JV with Dominion

Pikoo (SK)

- Diamondiferous kimberlite field
- JV with Stornoway
- Drilling Underway

Qilalugaq (NU)

- Big kimberlite on tide water
- Fancy orangey yellow diamonds
- Potential for high value stones
- JV with Stornoway

Mel (NU)

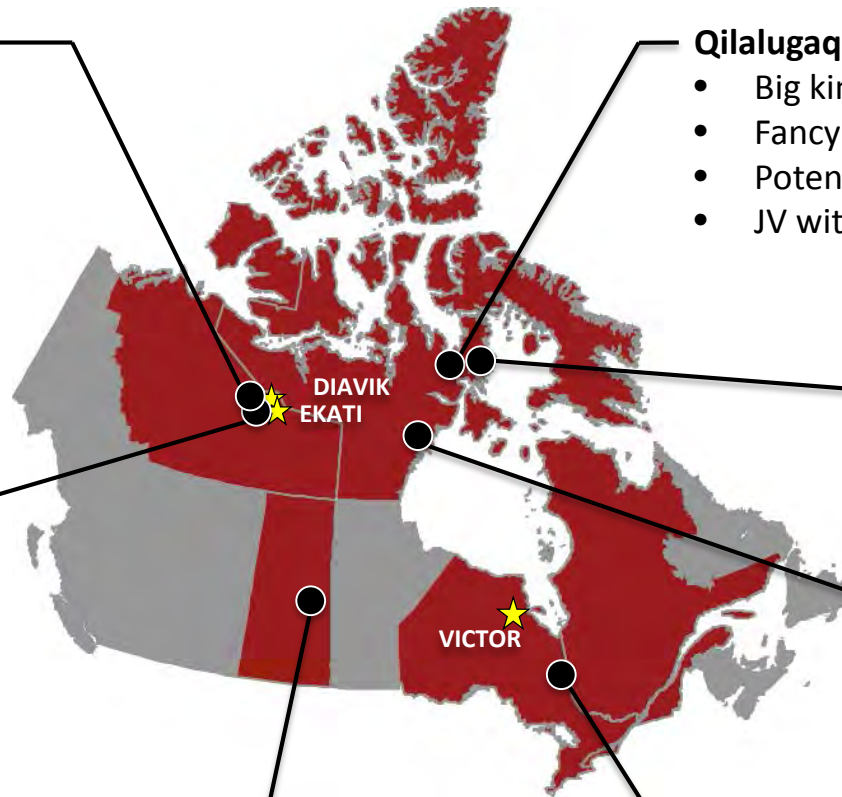
- KIM targets
- 2015 sample program
- 100% NAR

Luxx (NU)

- Drill ready targets w/ KIM support
- 100% NAR

Timiskaming (ON)

- Unsourced KIM trains; large database
- JV with Stornoway





PIKOO PROJECT, SK

North Arrow

MINERALS INC.

- North Arrow (80%)/Stornoway (20%) Joint Venture.
- Good local infrastructure; within 10 km of SK Hwy 911– more than 200 km from nearest kimberlite field (FALC).
- 7 discrete kimberlites discovered to date. 4 tested and proven diamondiferous.
- PK150 – most significant diamond discovery; 1232 diamonds > 0.106 mm from 531 kg.
- Spring 2016 drill program underway to fully defined known kimberlites and test new targets that came out of 2015 detailed mag survey.



23 +0.85 mm stones recovered from initial 2013 209 kg PK 150 sample

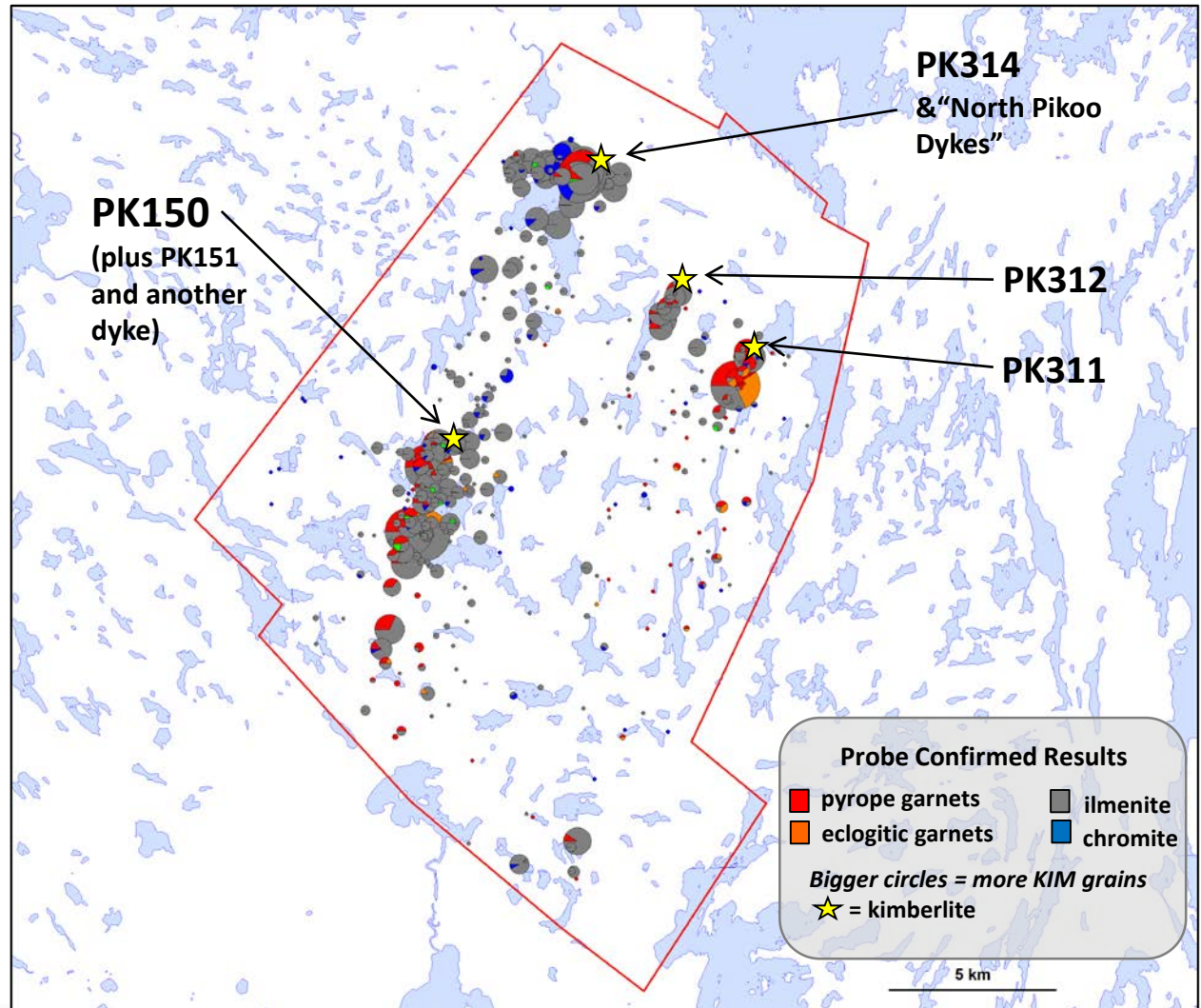


PIKOO PROJECT – KIMBERLITE INDICATOR TRAINS

North Arrow

MINERALS INC.

- 977 till samples have been collected from the property; including 550 in 2014.
- Positive samples range from 1 to 100's of KIM grains.
- Five KIM trains or anomalous areas have been identified.
- All indicator trains are probe-confirmed to be mantle derived and indicative of a kimberlitic source.





SPRING 2015 KIMBERLITE DISCOVERIES

North Arrow

MINERALS INC.

PK311

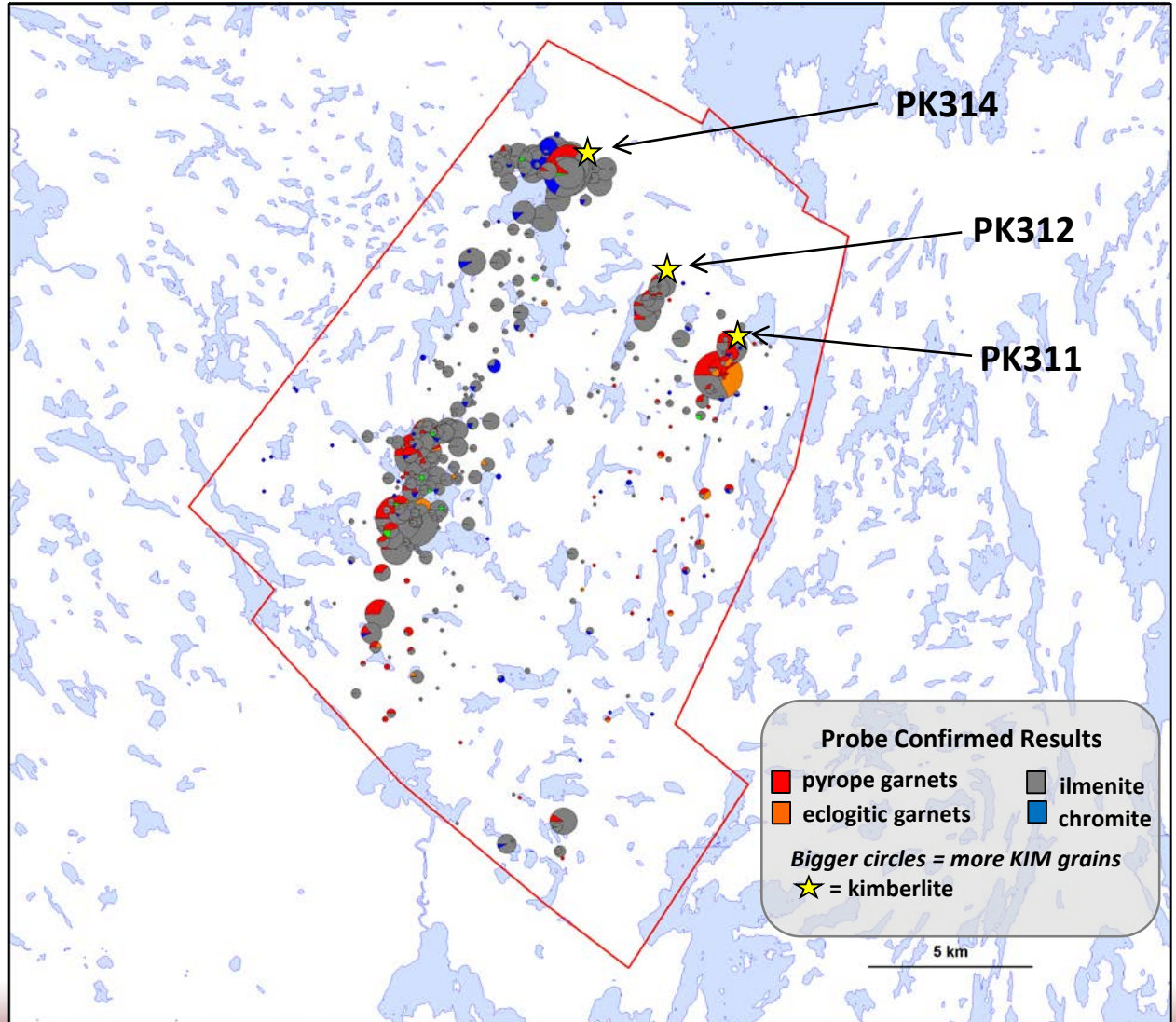
- drilling collared into a weathered micaceous unit confirmed by KIM analysis as kimberlite; more drilling required to define orientation/extent of body.

PK312

- 1.5 m near vertical dyke; 14.5 kg sample returned five diamonds; abundant olivine, garnet, ilmenite & chrome diopside macrocrysts; further delineation required.

PK314

- 25 m wide; >40 m strike length; drilled to 213m; high chrome pyrope down ice; 23 microdiamonds from 476 kg



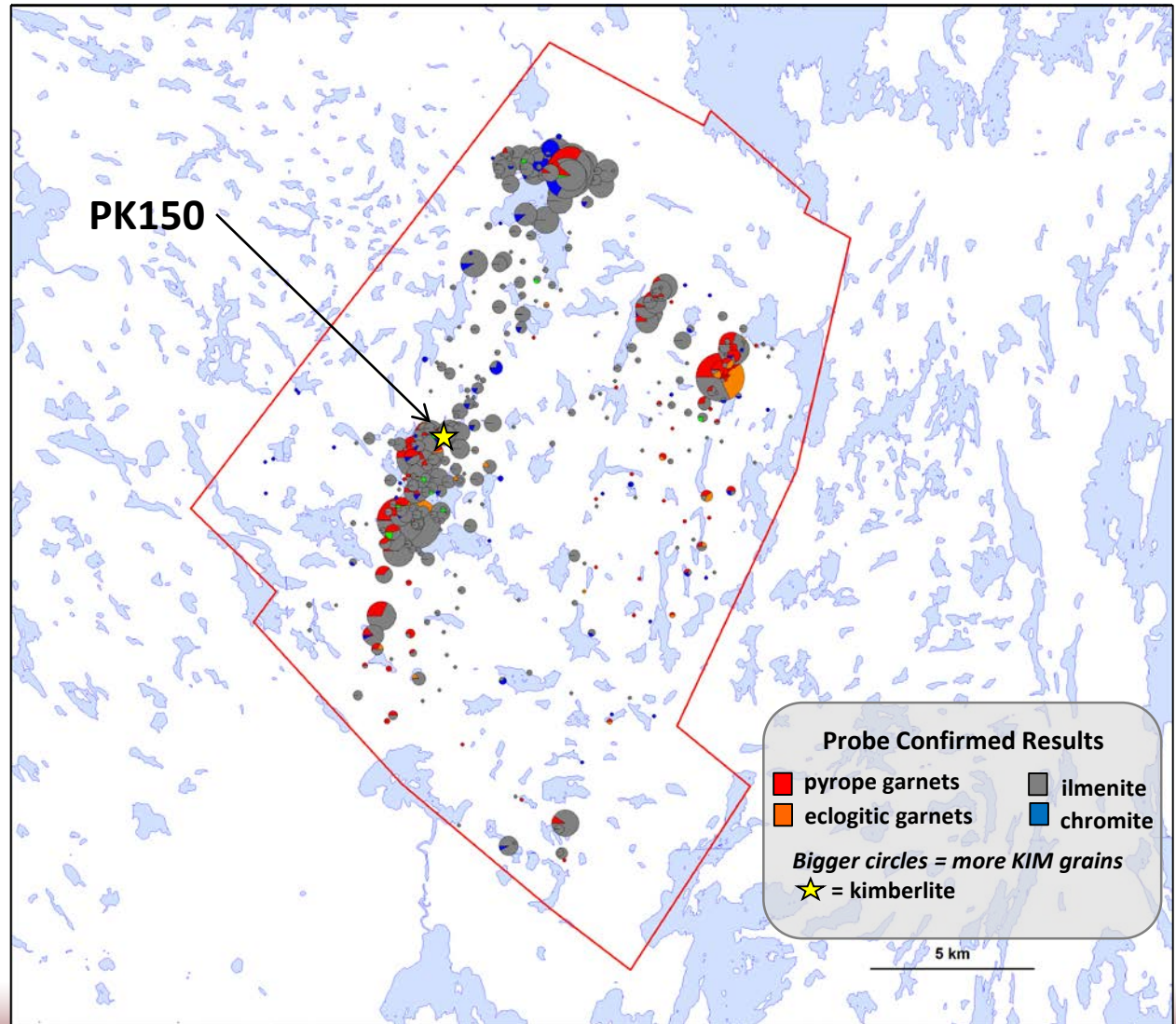


North Arrow MINERALS INC.

24 drill holes (3,243 m) tested
kimberlite discoveries from 2013
& new targets defined by till
sampling programs in 2014.

PK150 delineation drilling

- Was drilled by 6 holes (bringing total number of holes to 9)
- Strike extended to 150 m; depth to 199 m.
- Cut off to the west but remains open to east
- Eastern extension not constrained by high intensity magnetics;
- Transitional to diatreme-type textures encountered in eastern-most hole (PK-34)





SPRING 2015 DRILLING – PK150

North Arrow

MINERALS INC.

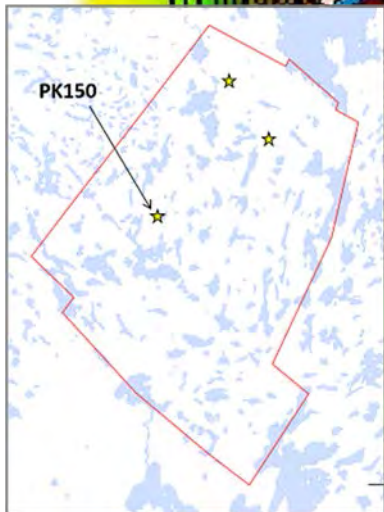
2013 drilling

2015 drilling

- Hole PK34 intersected 30m of kimberlite (21.5m true width) ~29m eastern stepout; weakly magnetic zone; subtle mag targets now on radar.
- Magmaclasts suggest transitional to diatreme facies.

Drill Hole PK34

creek

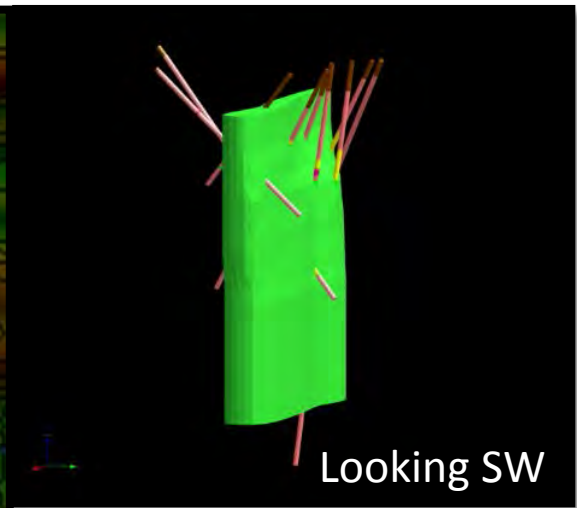
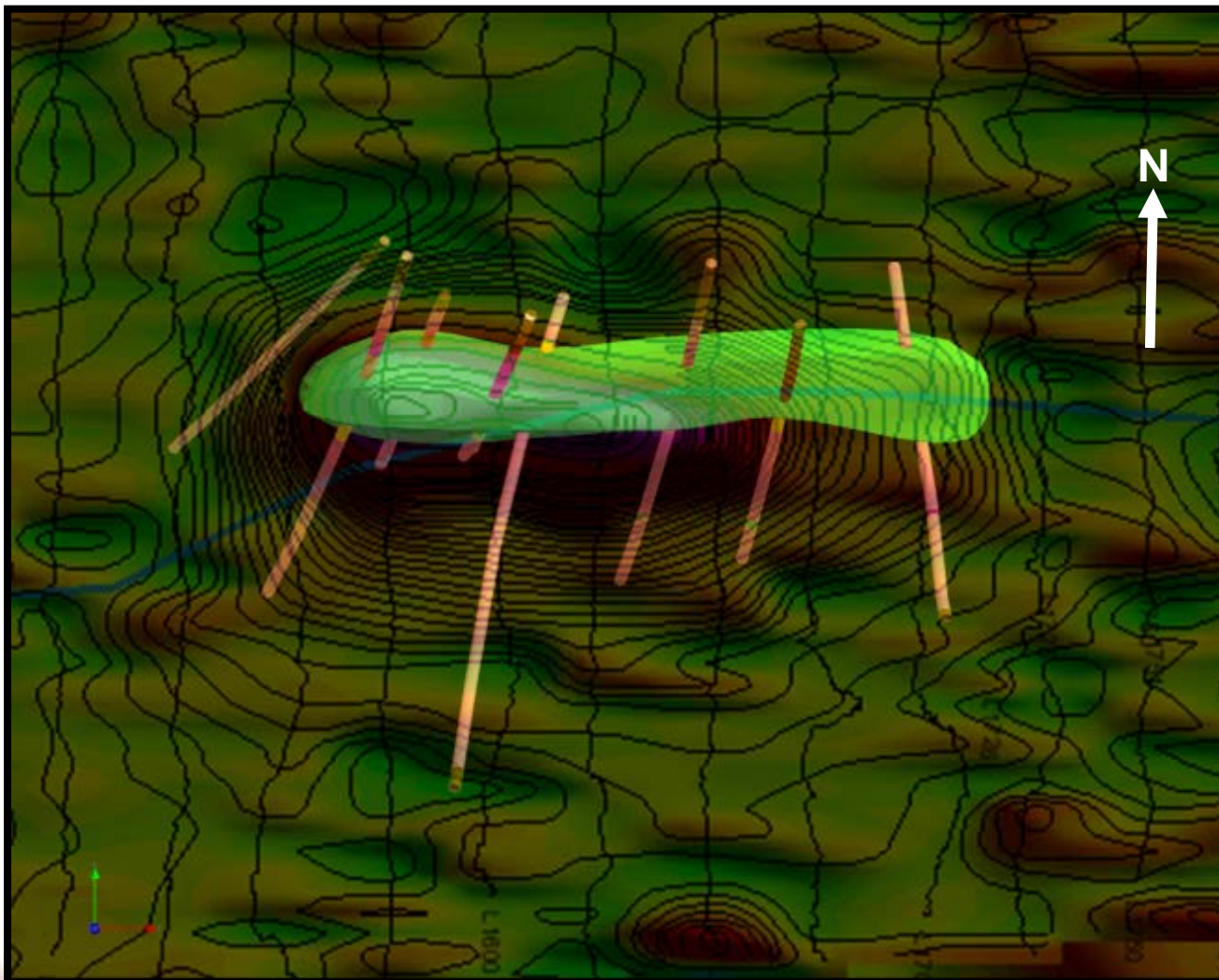


Ground Magnetic Field Data of PK150 – Vertical Gradient with Total Field Contours

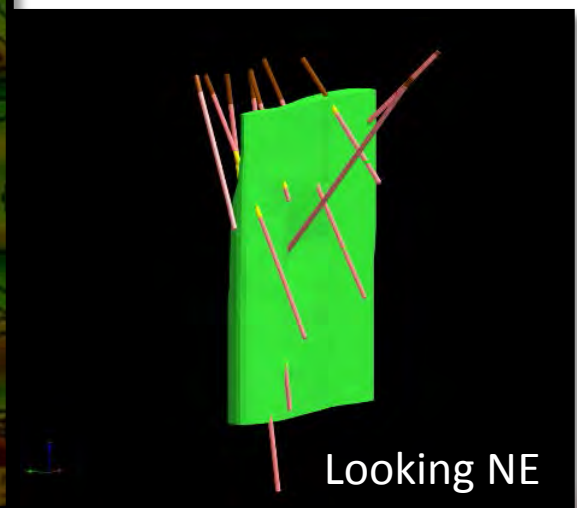


PK150 MODEL

North Arrow
MINERALS INC.



Looking SW



Looking NE



North Arrow
MINERALS INC.

PK150 – Coherent Kimberlite (HK)

Transitional to KPK (Diatreme)?



Concentric magmatic lapilli, cored by lithic fragments (CR xenoliths; autoliths) and macrocrysts (Olivine >> Ilmenite, garnet)

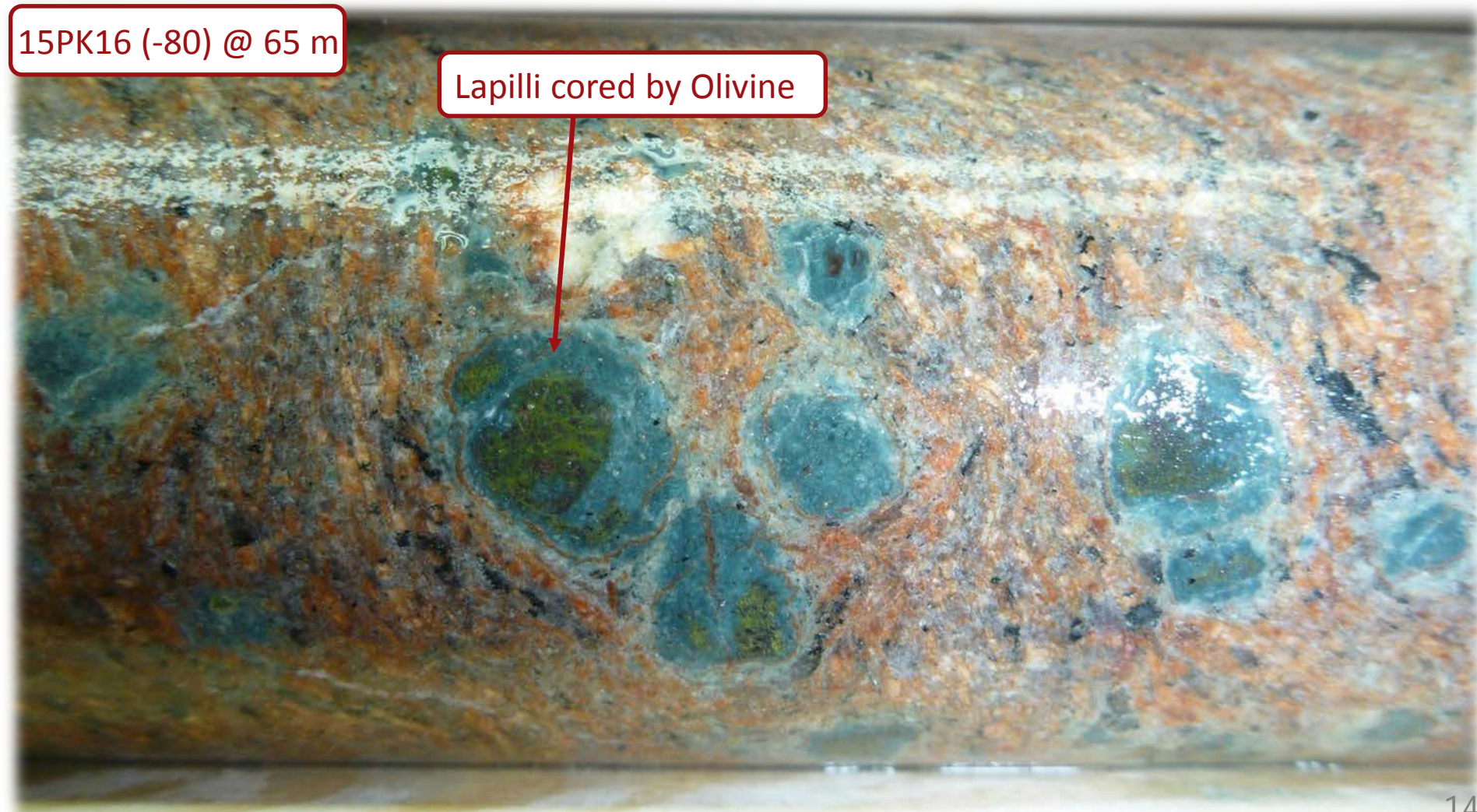


PK150 – Cracked Country Rock

North Arrow
MINERALS INC.

15PK16 (-80) @ 65 m

Lapilli cored by Olivine

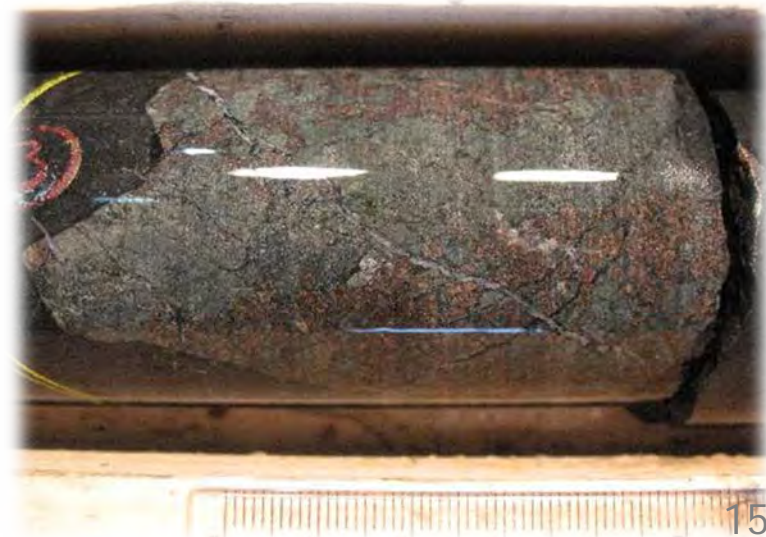
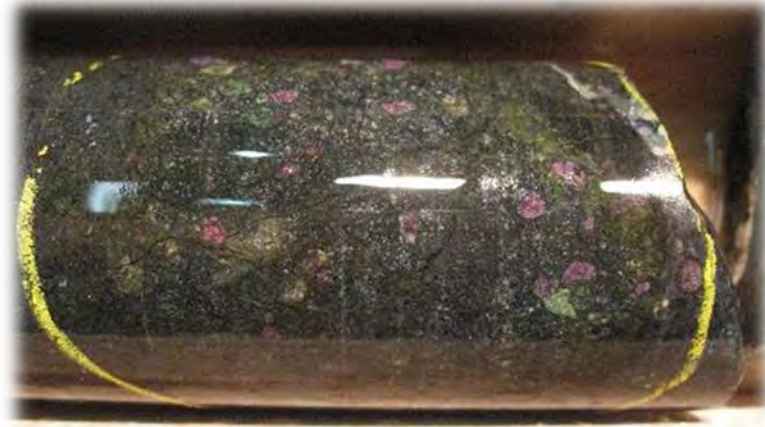
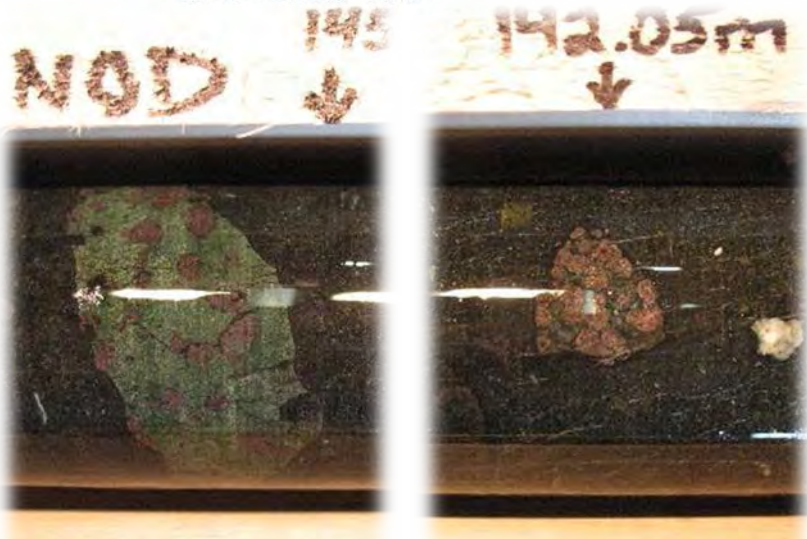




PIKOO KIMBERLITES – MANTLE SAMPLE

North Arrow

MINERALS INC.

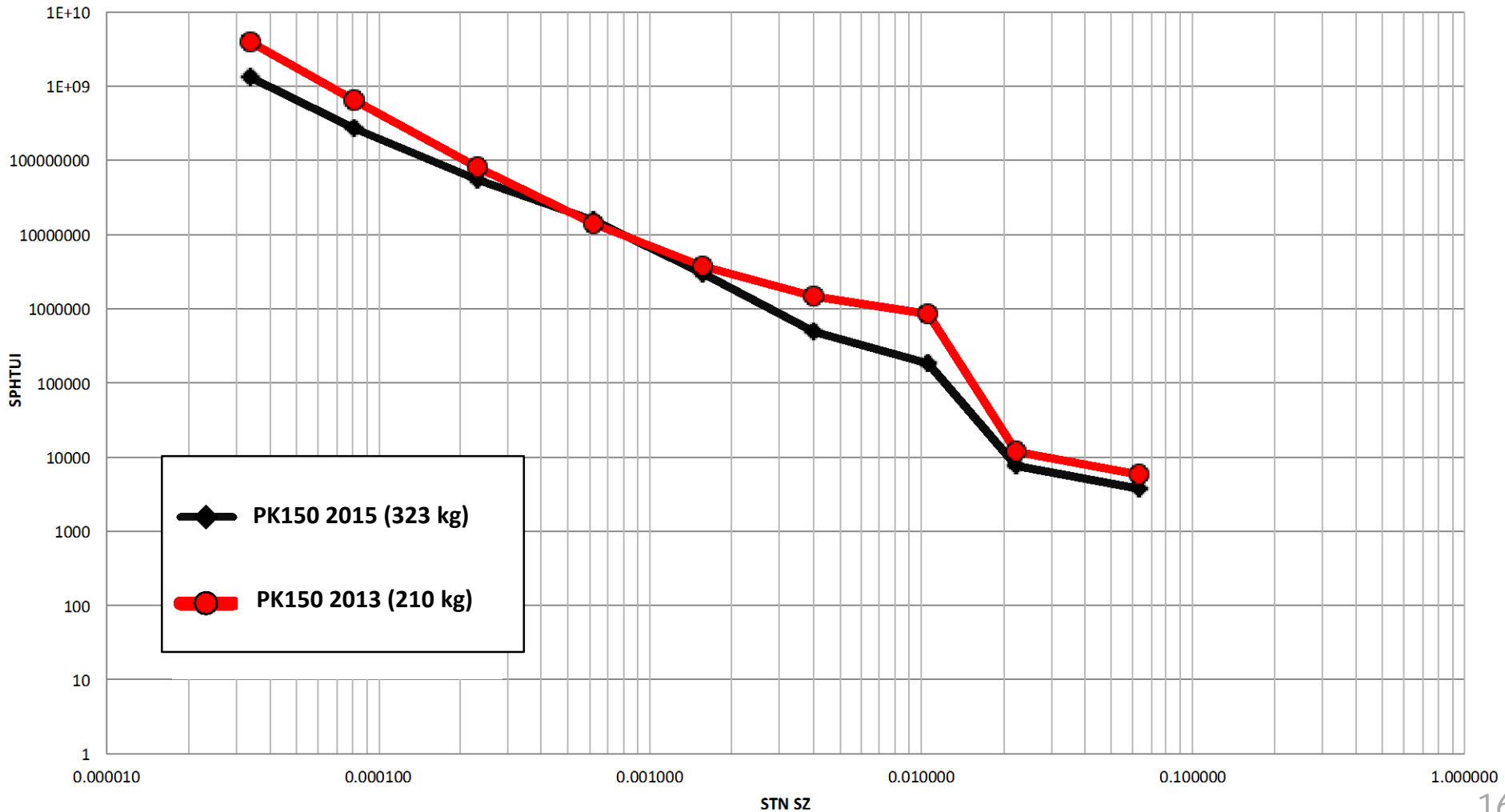




PK150 MICRO DIAMOND RESULTS – 2013 vs. 2015

North Arrow
MINERALS INC.

Microdiamond Results (Stones Per Unit Interval)



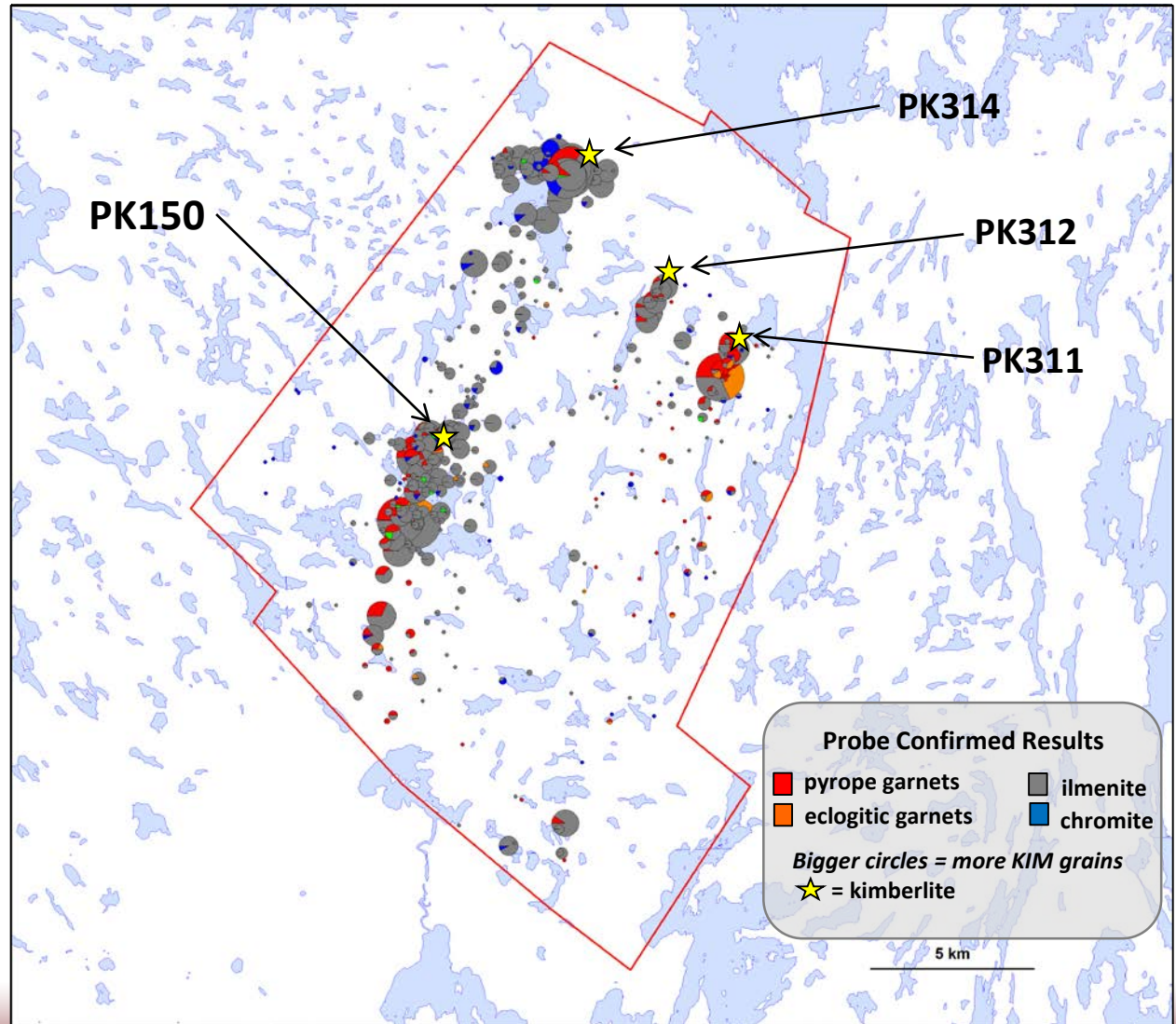


PIKOO PROJECT – THE WAY FORWARD

North Arrow

MINERALS INC.

- 2016 spring drilling campaign underway; commenced 2nd week of February; until ~end of March
- To fully define the PK150, PK312 and PK311 kimberlites.
- Test additional new targets from 2015 airborne magnetic survey.
- New diamond results late spring 2016.



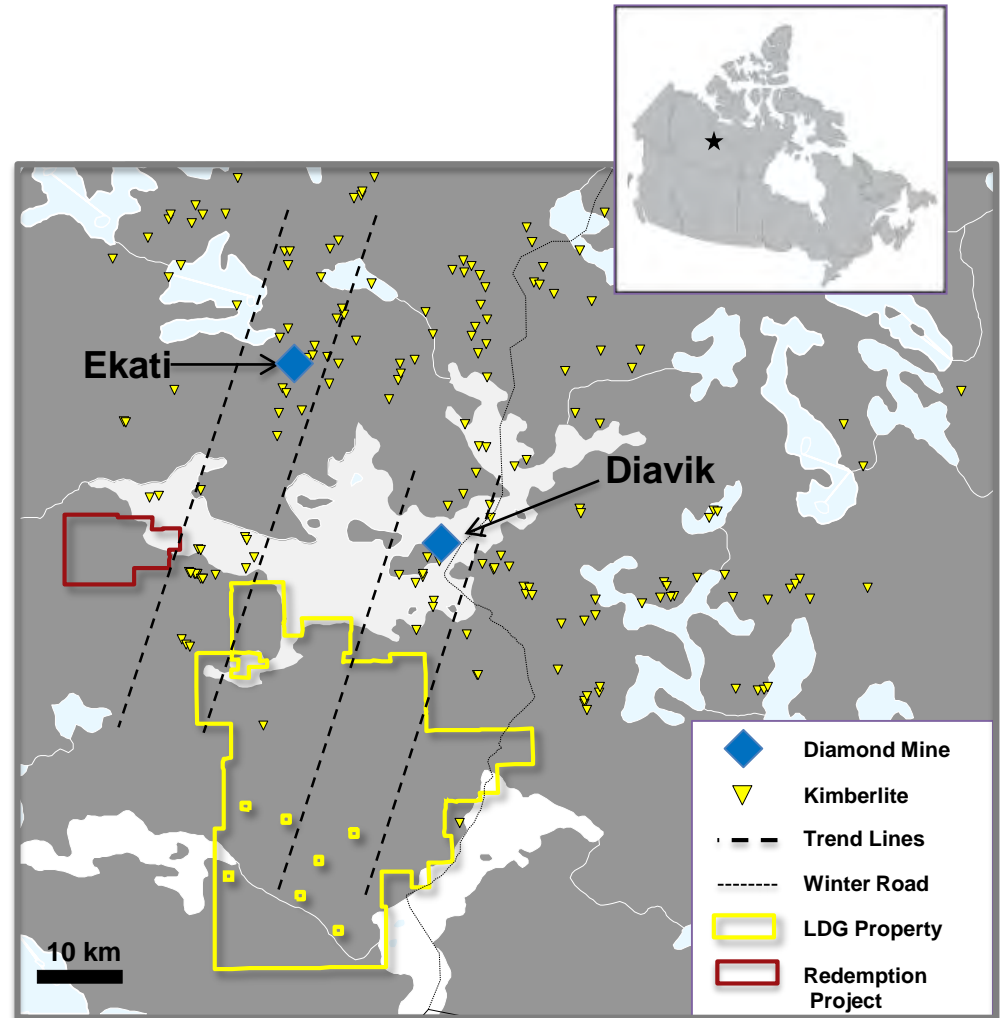


REDEMPTION & LDG PROJECTS, NT

North Arrow

MINERALS INC.

- At the southwestern end of the Lac de Gras kimberlite field.
- LDG is a 45/55 JV with Dominion Diamond Corporation – part owner of the Ekati and Diavik diamond mines; JV approved \$1.2 million 2016 budget.
- Redemption under Option from Arctic Star Exploration; NAR can earn 55% by spending \$5 million; drill program commencing mid-March.
- Both projects host unsourced kimberlite indicator mineral trains and will benefit from ongoing comprehensive surficial geology study funded by Government. Preliminary results expected November 2015.

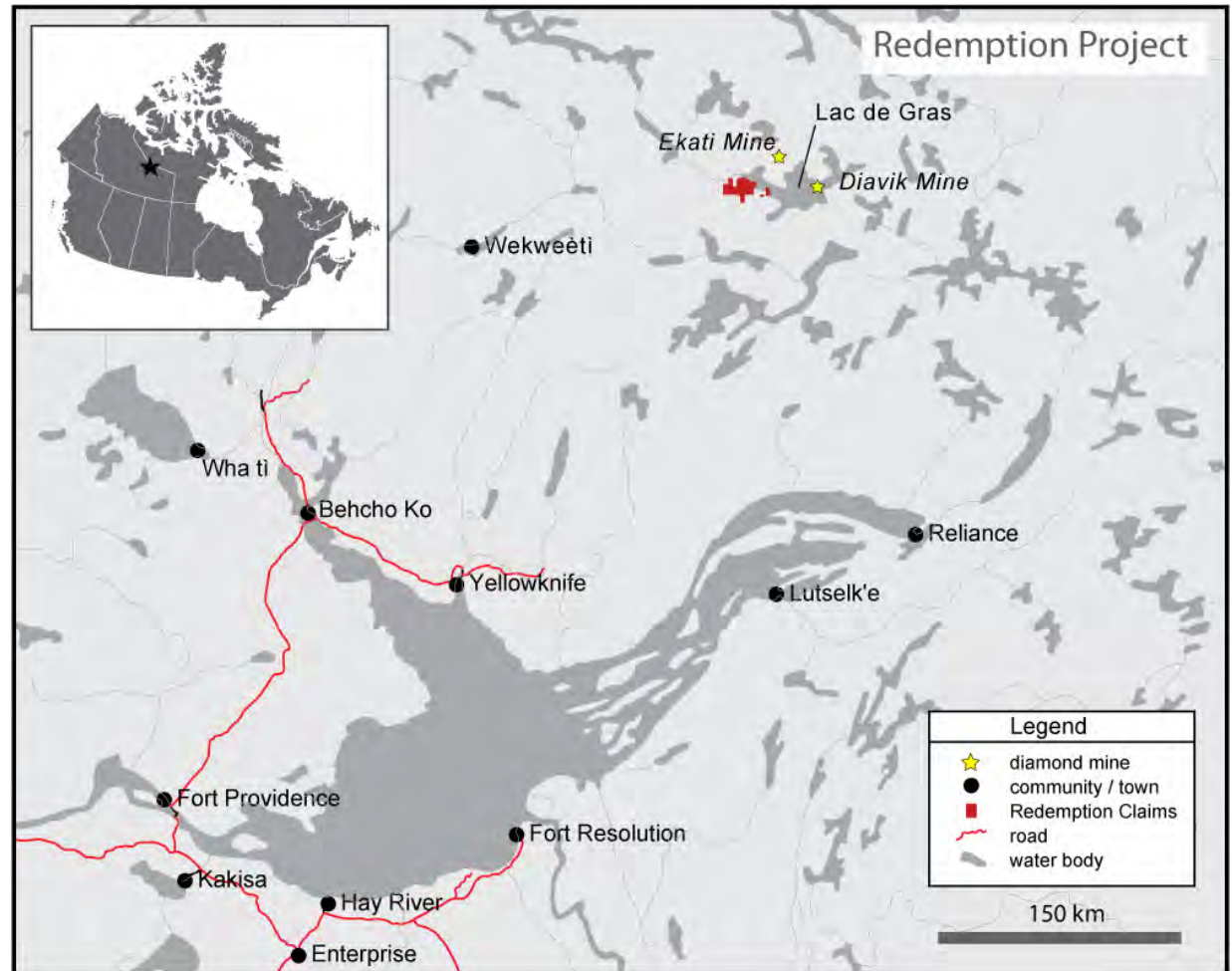




REDEMPTION PROJECT, NT

North Arrow
MINERALS INC.

- 34,300 acres located within the Lac de Gras diamond district.
- 32 km southwest of Ekati diamond mine.
- 47 km west of Diavik diamond mine.
- Under Option from Arctic Star Exploration.
- NAR to spend \$5 million by 2017 to earn a 55% interest.
- Drilling to commence mid-March 2016



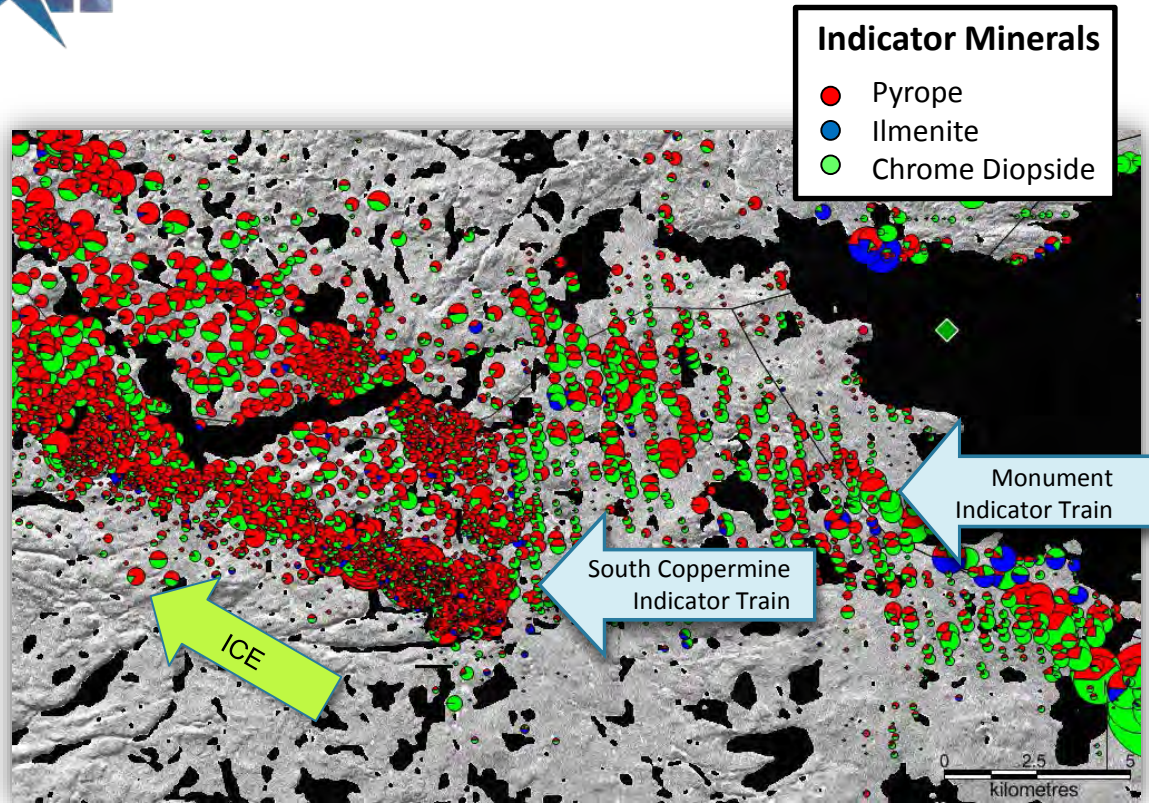


REDEMPTION PROJECT HISTORY PRE-NAR

North Arrow
MINERALS INC.

ARCTIC
STAR
EXPLORATION

- Significant past exploration starting during the early 1990's diamond exploration boom of Lac de Gras.
- Over \$12 million spent by multiple companies in an effort to source the South Coppermine indicator train including:
 - ~3,100 till samples,
 - <30,000 KIM analyses,
 - 10 airborne geophysical surveys
but very limited drilling!
- South Coppermine train presents many low calcium, high chrome, "G10" garnets very reminiscent of the chemistry published for some of the higher grade pipes of Diavik and Ekati.



G10 Garnet from South Coppermine KIM train
 Keliphytic rims suggest very little erosion of grains through transport; likely proximal to source



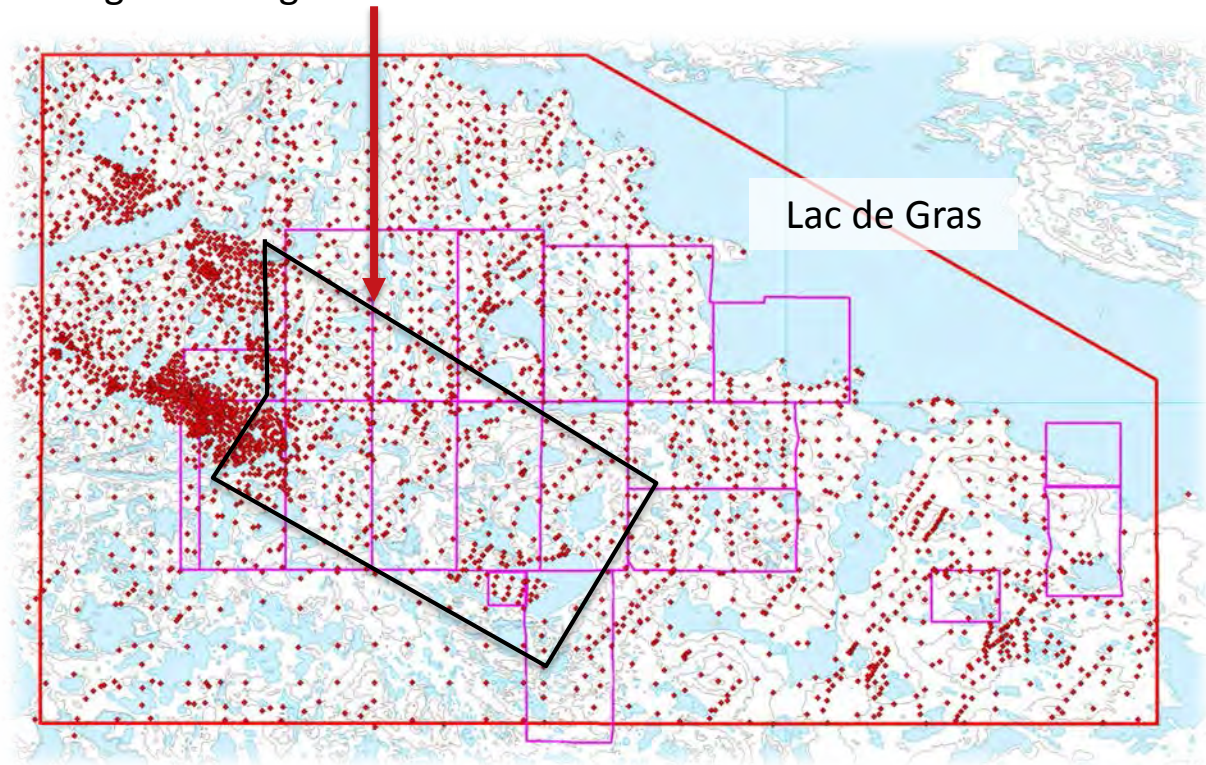


WORK COMPLETED 2013 & 2014

North Arrow
MINERALS INC.



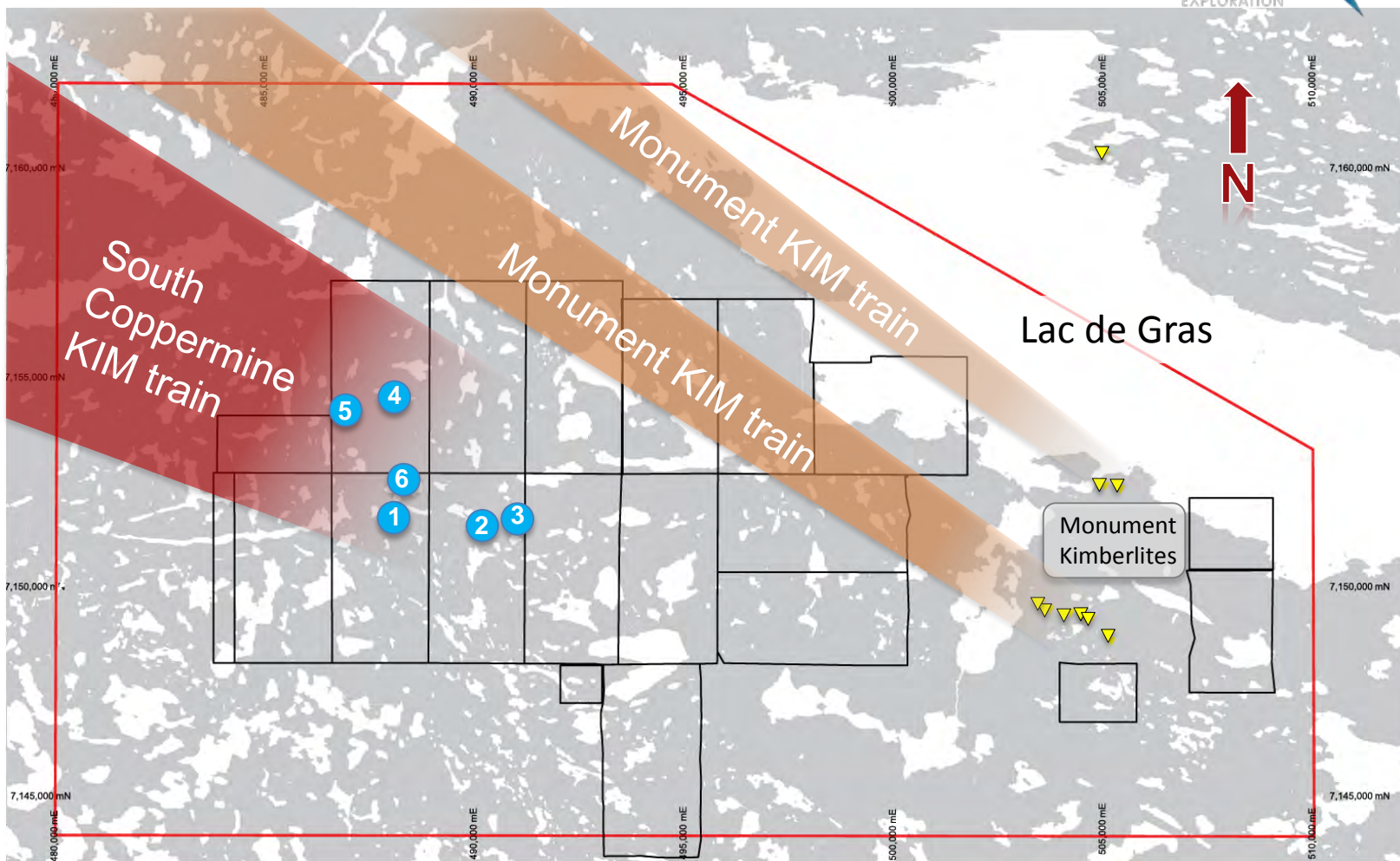
- Arctic Star and North Arrow signed option agreement, July 2013.
- Flew Airborne Gravity Survey covering main target area in 2013.
- Detailed modelling of gravity targets and related water depth surveys of 13 lakes.
- Over 350 additional till samples collected.
- Ground geophysical surveys of 23 grids.
- August 2014 completed 7 drill holes on 6 targets but did not intersect any kimberlite.





2014 DRILLING PROGRAM

North Arrow
MINERALS INC.



7 drill holes (800m) tested our 6 best targets. Kimberlite was not intersected.

WHY?

Decided to go back and reassess our data before drilling again. Do we really understand the glacial history?

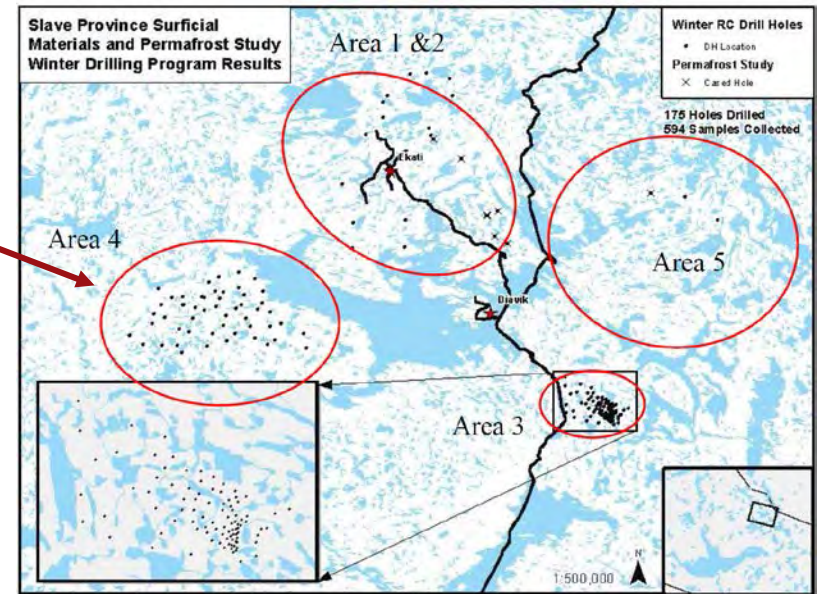


2015 RE-ASSESSMENT WORK – NT GOV WORK

North Arrow
MINERALS INC.



- Northwest Territories Geological Survey commenced the Slave Province Surficial Materials and Permafrost Study on five areas around Lac de Gras in March 2015; Area 4 is the South Coppermine.
- Comparative study of Monument indicator train to Coppermine indicator mineral train; one is well defined, one is enigmatic. They are proximal.
- 52 overburden reverse circulation drill holes completed within and around Redemption in March to May 2015 as part of study; more work funding dependent, but expected.





2015 RE-ASSESSMENT WORK

North Arrow
MINERALS INC.



- NAR initiated a separate, more detailed evaluation of the surficial geology of the Redemption property in an effort to better define and interpret the South Coppermine KIM Train.
- NAR conducted ground mag surveys on 14 separate grids testing 25 targets in May 2015. All targets located up ice of the termination of the South Coppermine (KIM) train.





2016 PROGRAM FUNDING

North Arrow
MINERALS INC.



- Jan 2016, NAR raised \$800,000 from the sale of two royalties in Redemption properties to Director, Chris Jennings to be spent drilling targets before Aug. 2016.
 - 1.25% GOR and NSR on North Arrow's possible 55% of mineral claims and leases under option from Arctic Star Exploration.
 - 1.5 % GOR and NSR on North Arrow's three 100% owned mineral claims.





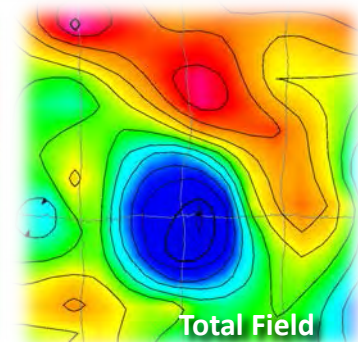
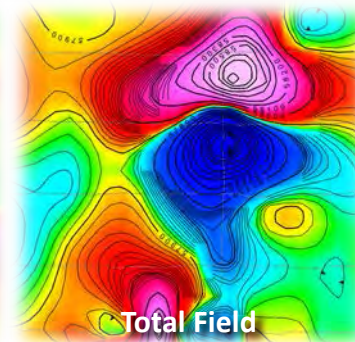
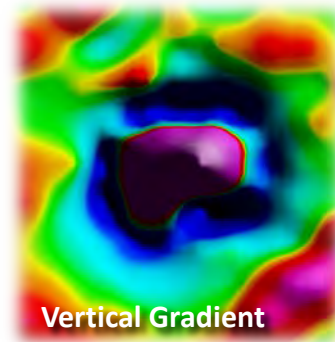
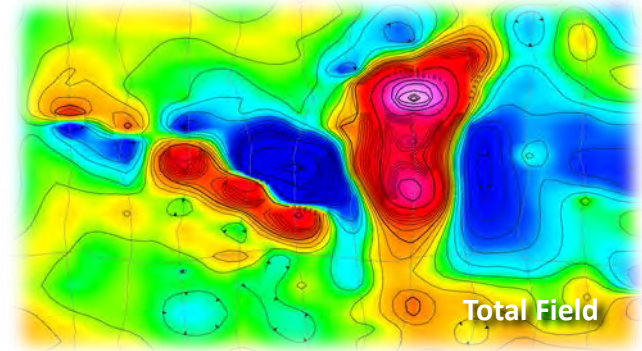
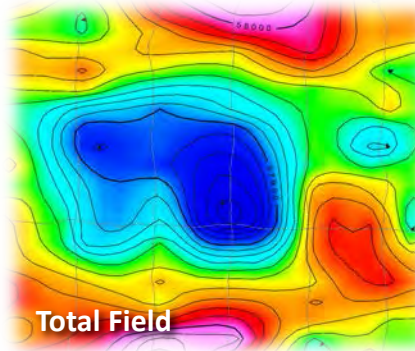
2016 DRILL PROGRAM - TARGETS



North Arrow

MINERALS INC.

- Core drilling initially, focused on geophysical targets at or around the South Coppermine indicator cut-off.
- RC drill may be brought in during core drilling or for the latter half of the program to more quickly test priority remaining targets.
 - Are they, or are they not, kimberlite? Find out, move forward.*





2016 DRILLING PROGRAM

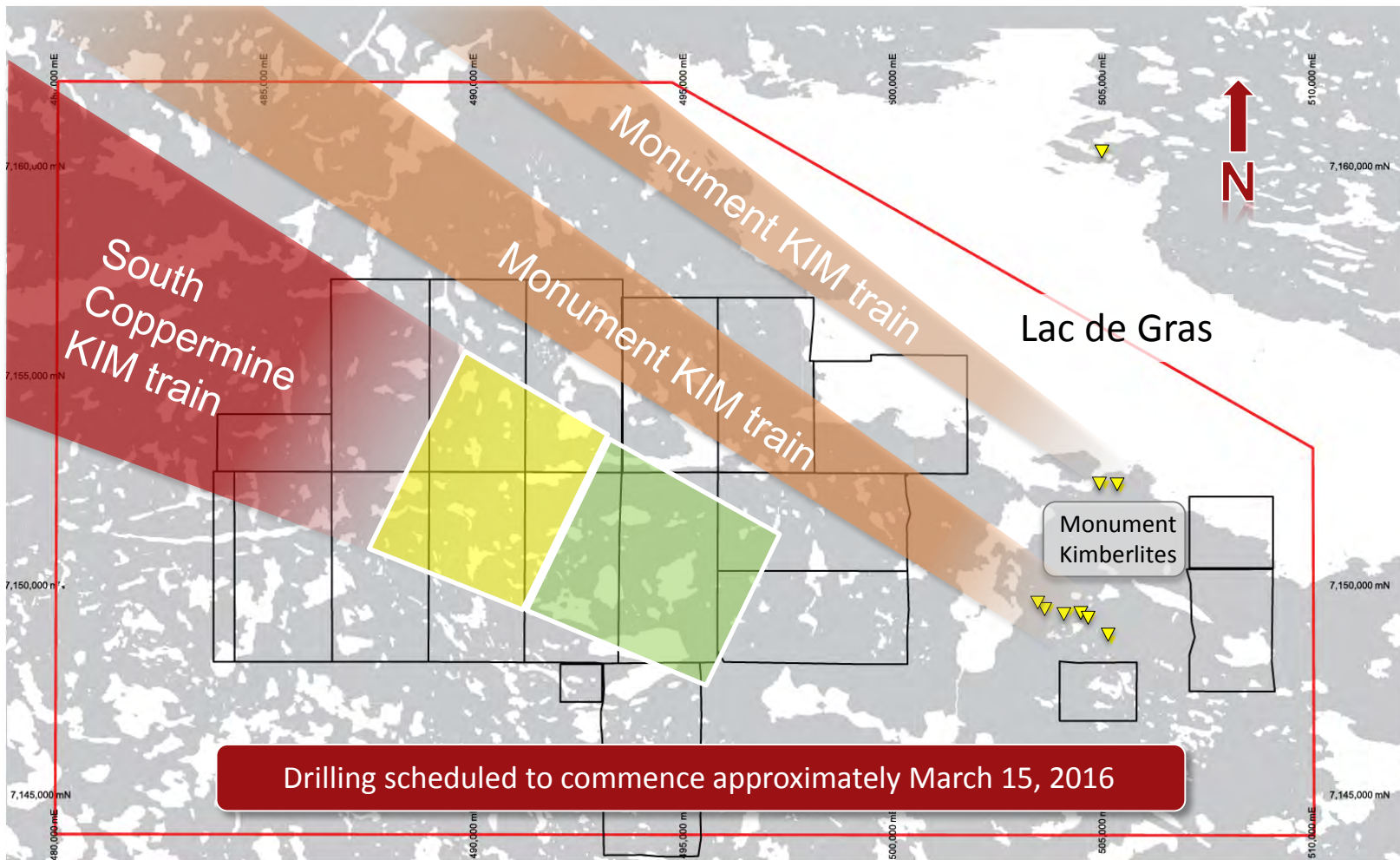


North Arrow
MINERALS INC.

Approximately 10 core holes will be drilled in the termination area of the South Coppermine KIM train.

RC drill rig may be brought in to more rapidly test targets east of the KIM train termination area.

Target selection still underway.



● 2016 approximate core drilling area ● 2016 approximate RC drilling area

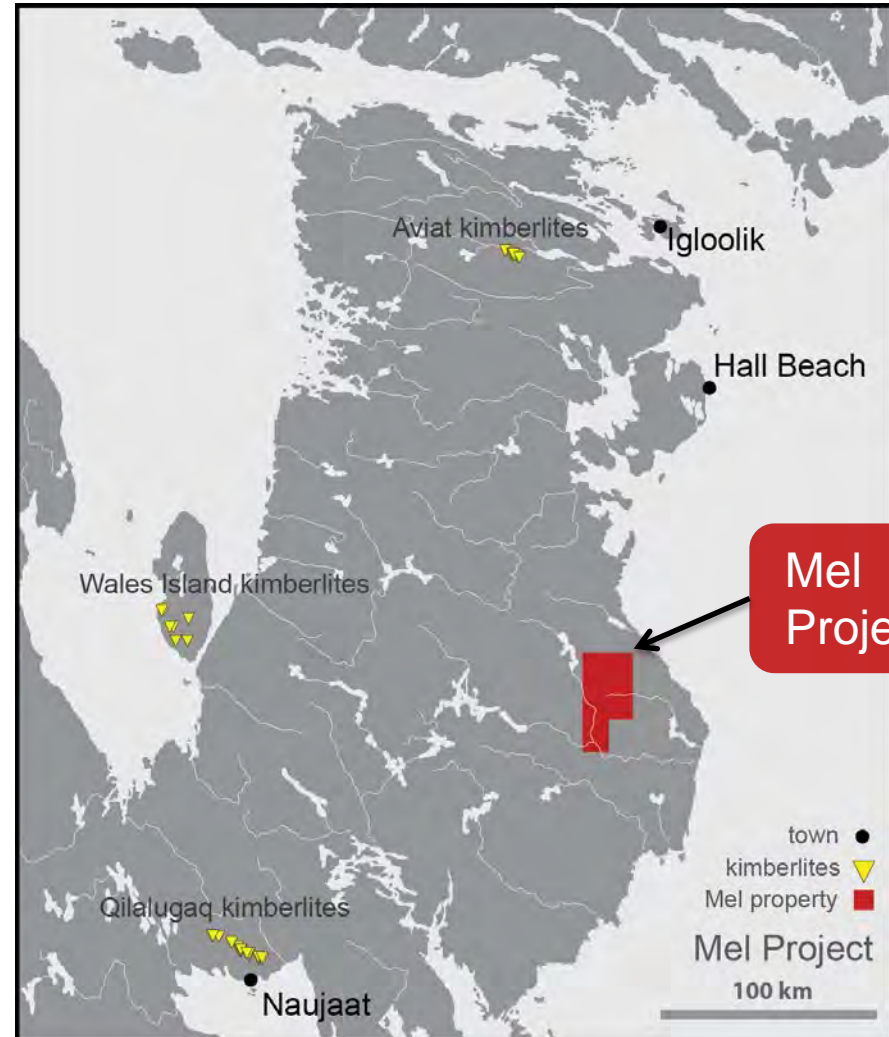


MEL PROJECT - NU

North Arrow

MINERALS INC.

- 100% owned.
- Unsourced KIM trains.
- Target area 1 is a 15km long multi-sample ribbon like mineral train up to 2.5km wide.
- May diverge into multiple narrower trains suggestive of multiple sources.
- Up-ice till sample line 4km away is barren
- Excellent mineral chemistry.
- 227 till samples collected in 2015 – results will double project database.



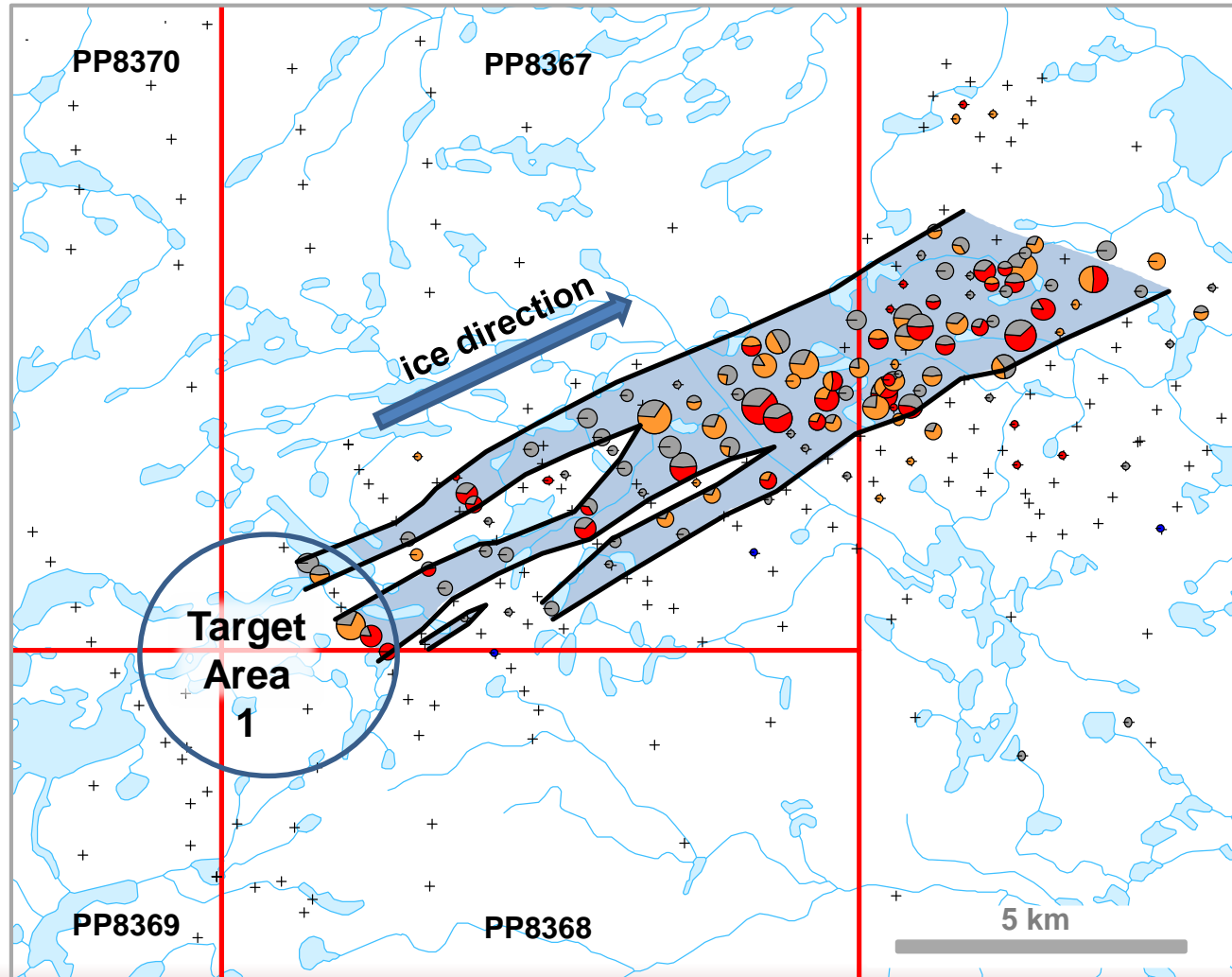


MEL PROJECT - NU

North Arrow

MINERALS INC.

- 100% owned.
- Unsourced KIM trains
- Target area 1 is a 15km long multi-sample ribbon like mineral train up to 2.5km wide.
- May diverge into multiple narrower trains suggestive of multiple sources.
- Up-ice till sample line 4km away is barren
- Excellent mineral chemistry.
- 227 till samples collected in 2015 – results will double project database.



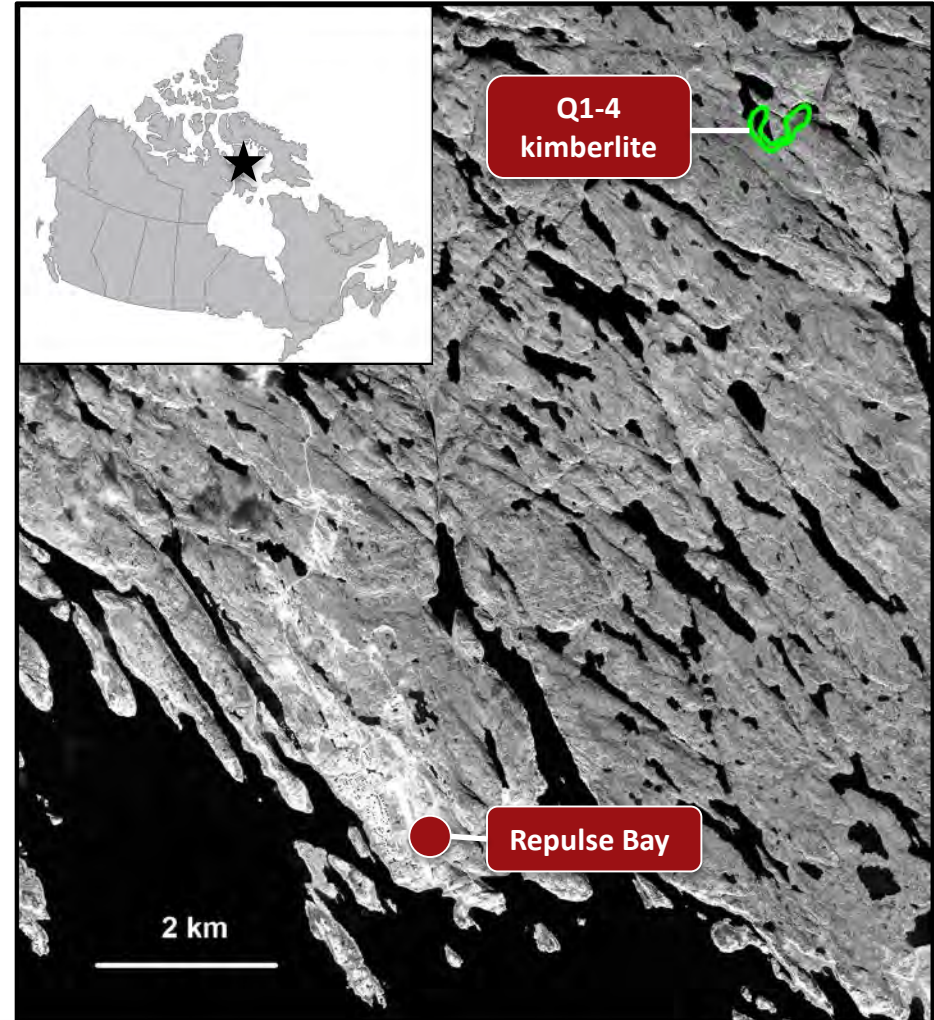


QILALUGAQ PROJECT, NU

North Arrow

MINERALS INC.

- ✓ **Jurisdiction**- Settled land claim
- ✓ **Near tide water** - improved logistics; sealift available; proximity to workforce
- ✓ **Large tonnage** – 48.8 million tonnes inferred resource. (May 13, 2013)*
- ✓ **Good inferred resource grade** – 53 cph^{**}.
***Total recovery +1DTC grade*
- ✓ **Blue sky** – Inferred resource only to 205m – open to depth; 15 additional kimberlite bodies.
- ? **Diamond valuation** – June 2015 valuation was low; challenged by: i) small parcel size, ii) lack of high value stones, and iii) lower yielding cuboid shapes.
- ? **Possible Upside** – very rare Type 1b fancy coloured diamonds.



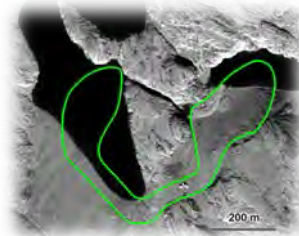


QILALUGAQ PROJECT, NU

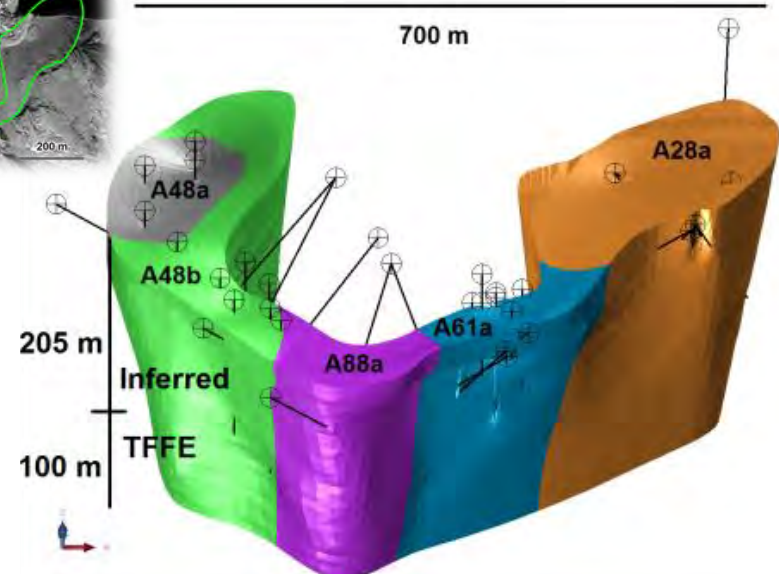
North Arrow

MINERALS INC.

- ✓ **Jurisdiction**- Settled land claim
- ✓ **Near tide water** - improved logistics; sealift available; proximity to workforce
- ✓ **Large tonnage** – 48.8 million tonnes inferred resource. (May 13, 2013)*
- ✓ **Good inferred resource grade** – 53 cpht**.
**Total recovery +1DTC grade
- ✓ **Blue sky** – Inferred resource only to 205m – open to depth; 15 additional kimberlite bodies.
- ? **Diamond valuation** – June 2015 valuation was low; challenged by i) small parcel size, ii) lack of high value stones, and iii) lower yielding cuboid shapes.
- ? **Possible Upside** – very rare Type 1b fancy coloured diamonds.



12.5 ha surface area kimberlite



* CAUTION – Mineral Resources are not Mineral Reserves and do not have demonstrated economic viability



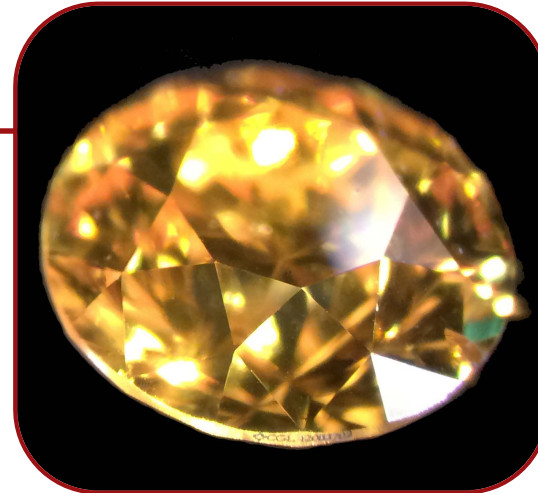
Q1-4 DIAMONDS - TESTING POSSIBLE UPSIDE

North Arrow

MINERALS INC.

Q1-4's Yellow Diamonds:

Questions answered, questions that remain...



0.14 carat
round
brilliant SI1
**fancy deep
orangey
yellow**
(CGL
Certified);
Estimated
wholesale
value
~US\$2,750
/ct.

- Can they be polished?
- Are they truly fancy coloured diamonds?
- Do they deserve a premium price?
- Can bigger (>0.5ct) diamonds be fancy coloured?
- What is the yield?
- Can Q1-4 host rough diamonds that could yield +1 ct fancy orangey yellow polished? +2 ct? +3 ct?
- With what frequency?
- Can a larger, ~15,000t (~3,000 ct) sample be justified?



Can bigger (>0.5ct) diamonds be fancy coloured? 4.42 cubic aggregate is currently being tested for colour and yield.





THE WAY FORWARD

North Arrow

MINERALS INC.

Project	Location	Commodity	Interest	Comment
Pikoo	Saskatchewan	Diamonds	80%	Winter drilling underway: delineation & discovery
Redemption	NWT	Diamonds	55%	Drill program March/April 2016
Lac de Gras	NWT	Diamonds	45%	JV approved ~\$1.2M budget for 2016; Gov't study prelim results pending;
Mel	Nunavut	Diamonds	100%	2015 till results pending
Luxx	Nunavut	Diamonds	100%	Permitting for drill program underway
Qilalugaq	Nunavut	Diamonds	80%	Diamond polishing exercise to assess path forward
Timiskaming	Ontario	Diamonds	80%	Database evaluation

- Pikoo – Winter 2016 delineation drilling of PK150, PK311, and PK312 as well as new targets from heliborne mag located at heads of indicator trains; permitting; community and leadership meetings.
- Redemption - 2016 drilling to commence mid March.
- Mel – 2015 Till sample results; final sorting expected by end of March.
- Qilalugaq – polishing exercise and colour evaluation of Q1-4 diamonds.
- North Arrow is fully funded to complete this work.



North Arrow

MINERALS INC.

TSXV: NAR

Ken Armstrong
President & CEO

Nick Thomas
Investor and Community Relations

Suite 960-789 West Pender Street
Vancouver, BC
Canada V6C 1H2
Tel: +1.604.668.8354
Fax: +1.604.336.4813

info@northarrowminerals.com

@narminerals



northarrowminerals



www.northarrowminerals.com

