



North Arrow

MINERALS INC.

Experienced
Northern Exposure

Canadian Lithium Projects

VRIC January 2024

FORWARD-LOOKING INFORMATION

This presentation contains projections and forward-looking information that involve various risks and uncertainties, including, without limitation, statements regarding the potential extent of mineralization, resources, reserves, exploration results and plans and objectives of North Arrow Minerals Inc. These risks and uncertainties include, but are not restricted to, the amount of geological data available, the uncertain reliability of drilling results and geophysical and geological data and the interpretation thereof and the need for adequate financing for future exploration and development efforts. There can be no assurance that such statements will prove to be accurate. Actual results and future events could differ materially from those anticipated in such statements. These and all subsequent written and oral forward-looking statements are based on the estimates and opinions of management on the dates they are made and are expressly qualified in their entirety by this notice. The Company assumes no obligation to update forward looking statements should circumstances or management's estimates or opinions change.

QUALIFIED PERSON
UNDER NI 43-101

Disclosure of a scientific or technical nature related to North Arrow's projects in this presentation has been reviewed and approved by Ken Armstrong, P.Geo. President and CEO of North Arrow and a Qualified Person under NI 43-101.

WHO WE ARE

North Arrow is a Canadian company focused on the identification and evaluation of exploration opportunities in Canada.



North Arrow's management and directors have a successful track record of resource discovery and development in Canada's North.





LEADERSHIP TEAM & BOARD

D. Grenville Thomas (Chairman) Founder of Aber Resources, discoverer of the Diavik Diamond Mine; Canadian Mining Hall of Fame inductee.

Ken Armstrong P.Geo. (President, CEO, Director and Qualified Person under NI 43-101) 25+ years exploration & evaluation experience w/ Diavik, Aber, De Beers, Navigator, and Stornoway. Director & Past President NWT & Nunavut Chamber of Mines.

Christopher Jennings (Director) Founder of SouthernEra, consultant to Aber; formerly with International Corona, BP Minerals (Canada) and Falconbridge.

Blair Murdoch (Director) More than thirty years experience in senior management of private and public companies.

Torrie Chartier (Director) 25+ years of experience in northern mineral exploration and aviation industries.

Eira M. Thomas (Advisor) Extensive exploration and development experience in Canada and Africa; Former officer &/or director Lucara, Suncor, Aber, Kaminak.

Allison Rippin Armstrong (Advisor) 20+ years Canadian and international CSR & ESG experience.

WEALTH OF EXPERIENCE



Ken Armstrong and Gren Thomas at the LDG Project NT

Investing in...

- ❖ A highly experienced management and geological team with a long history of **mine-finding experience** in Canada's north
- ❖ Three permitted and drill ready, spodumene-bearing pegmatite properties near infrastructure in the NWT
- ❖ Gold and diamond projects with value upside
- ❖ A company positioned for both strong market demand for lithium and a re-bounce in interest in rough diamond market

TSXV: NAR	As of January 15, 2023
Share Price	\$0.04
Market Cap	\$7 M
Issued	176 M
Options	13 M
Warrants	64 M
Fully Diluted	252 M
Insiders/Advisers	~27%

Companies Exploring the
Yellowknife Pegmatite
Province

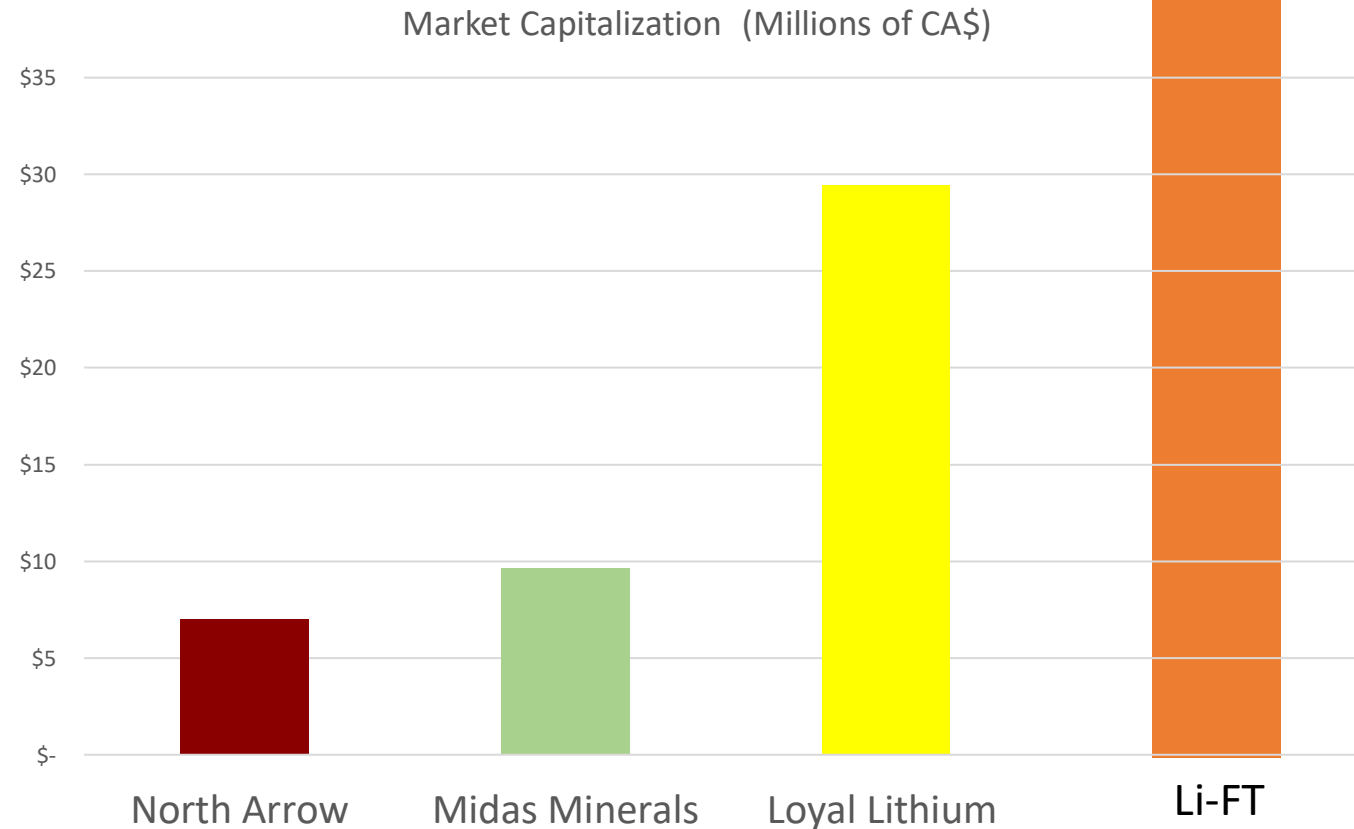
Company	Interest Earned	Acquisition Cost
Li-FT	100%	\$142,920,000
Loyal Lithium	60%	\$4,575,000
Midas Minerals	80%	\$11,500,000 ¹
North Arrow	100%	\$60,000 ²

¹Includes \$10M in exploration expenditures

²Three Spodumene pegmatite projects

Market data as of January 16, 2024

Market Capitalization (Millions \$Cdn)



NORTH ARROW PROJECT PIPELINE

Advanced/Discovery Stage Lithium

1 LDG Lithium (100%)
Spodumene lithium pegmatite showings

2 MacKay Lithium (100%)
Spodumene lithium pegmatite showings

3 DeStaffany (100%)
Spodumene lithium pegmatite project

Grassroots Lithium

4 Bathurst Inlet (100%)
Pegmatites with unknown mineralogy



Advanced Stage Diamonds

1. Naujaat (60%)
Significant diamond inventory; High-value fancy orange & yellow diamonds

Discovery Stage Diamonds

2. Loki (100%)
Kimberlite discovery - 2018
3. Pikoo (100%)
Kimberlite discovery - 2016

HARD ROCK LITHIUM PROJECT PIPELINE

Advanced/Discovery Stage Lithium

1 **LDG Lithium**
(100%)
*Spodumene lithium
pegmatite showings*

2 **MacKay Lithium**
(100%)
*Spodumene lithium
pegmatite showings*

3 **DeStaffany**
(100%)
*Spodumene lithium
pegmatite project*

Three properties with drill ready
spodumene pegmatite targets



Grassroots Lithium

4 **Bathurst Inlet**
(100%)
*Pegmatites with
unknown mineralogy*

A four-project
portfolio for
~\$60,000 in
acquisition costs
including staking

NAR LITHIUM PROJECTS IN THE NWT

Advanced/Discovery Stage Lithium

- 1** **LDG Lithium**
(100%)
*Spodumene lithium
pegmatite project*
- 2** **MacKay Lithium**
(100%)
*Spodumene lithium
pegmatite project*
- 3** **DeStaffany**
(100%)
*Spodumene lithium
pegmatite project*

Lithium Enriched Pegmatites

Found most often within meta-sediments near to a fertile, highly fractionated, S-type granitic pluton. This late-stage melt crystallizes as rare-element-enriched dikes external to the pluton
SPODUMENE-BEARING PEGMATITES!

The MacKay-Aylmer Domain

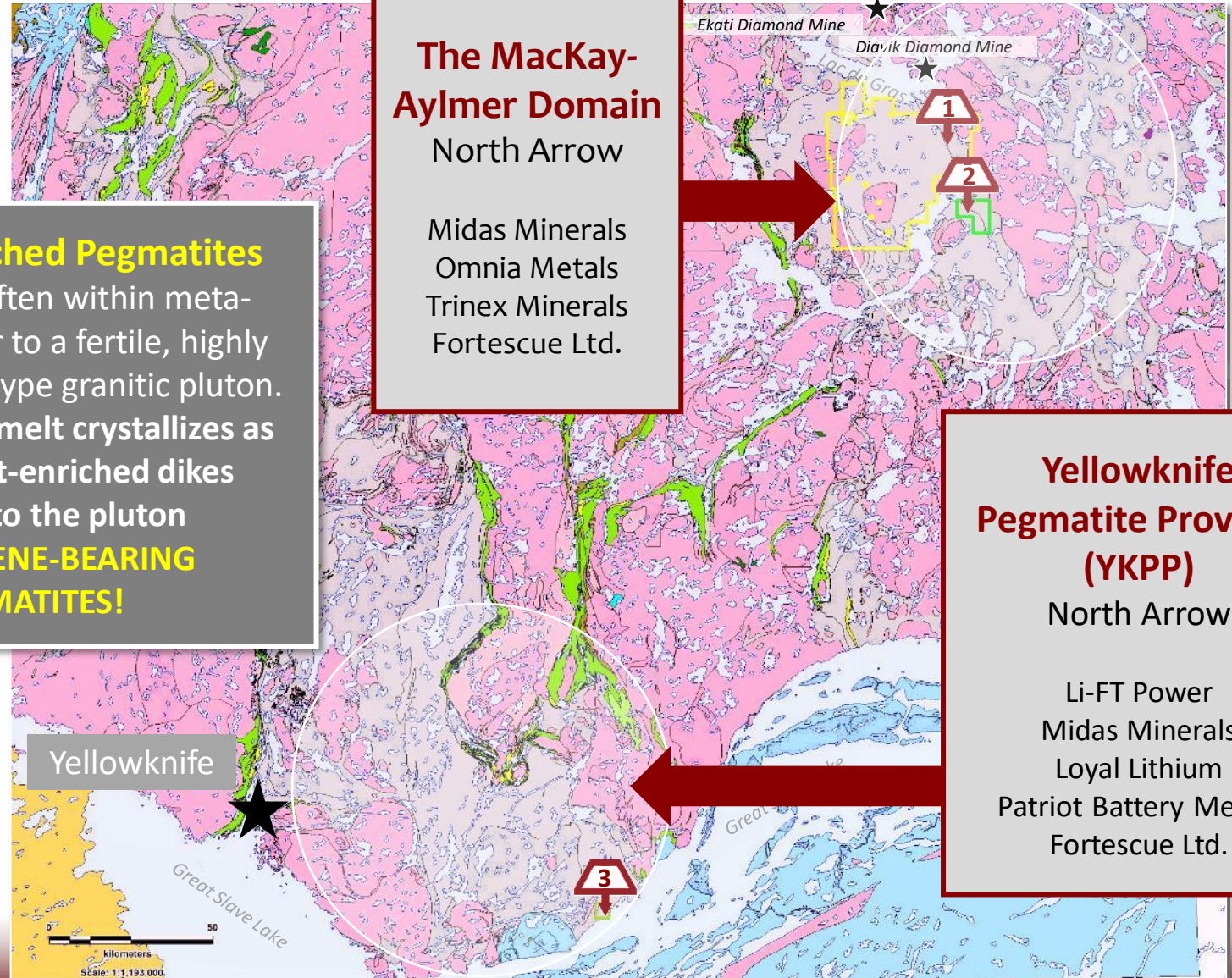
North Arrow

Midas Minerals
Omnia Metals
Trinex Minerals
Fortescue Ltd.

Yellowknife Pegmatite Province (YKPP)

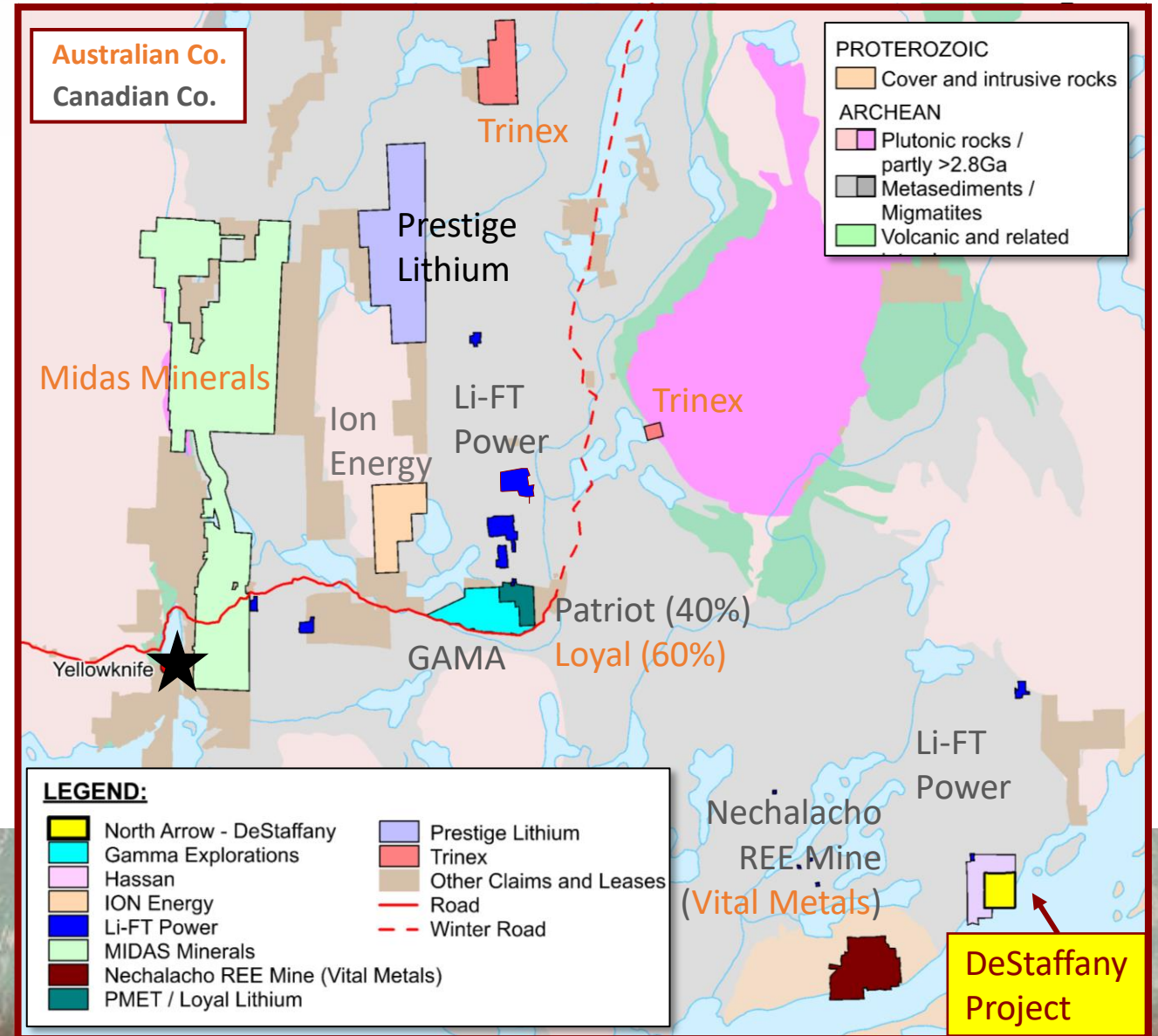
North Arrow

Li-FT Power
Midas Minerals
Loyal Lithium
Patriot Battery Metals
Fortescue Ltd.



YELLOWKNIFE PEGMATITE PROVINCE (YPP)

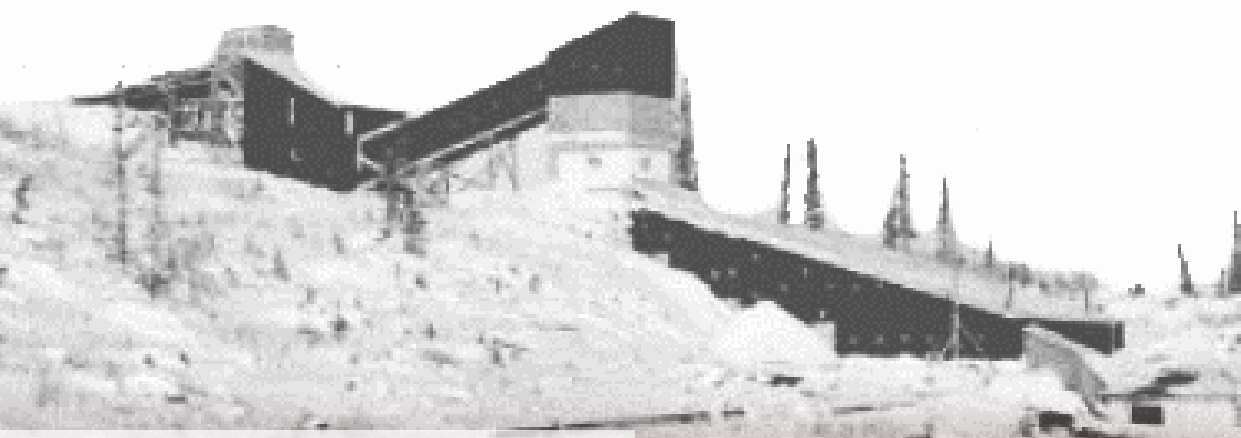
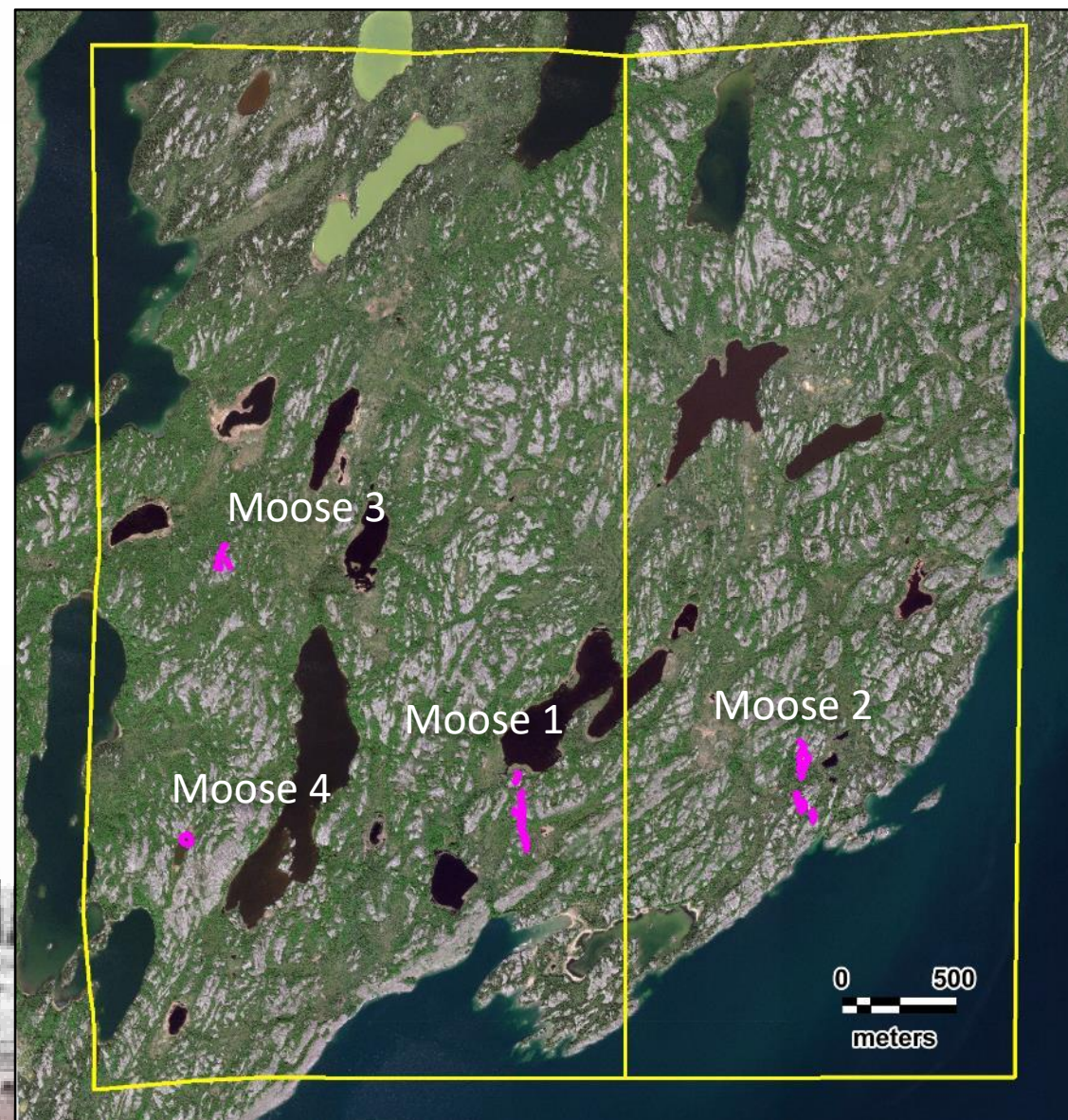
- Companies currently conducting exploration: LiFT, Loyal Lithium, Midas Minerals, Ion Energy, Patriot Battery Metals, Gama Explorations, Prestige Lithium, Fortescue
- NAR team has past Li, Ta and REE experience in the region with DeStaffany and Thor Lake
- DeStaffany Project 115km East of Yellowknife and includes at least four spodumene pegmatites





DESTAFFANY LITHIUM PROJECT

- Moose 1 and Moose 2 spodumene pegmatites
- >350m strike length
- Up to 30m wide
- <500m from Great Slave Lake
- Moose 2 was test mined for Ta, Nb, Sn in the 1940's & 50's but **never evaluated for lithium**
- 'Re-discovered' Moose 3 and Moose 4
- Channel samples Moose 1: **1.5% Li_2O / 7.5m**
- Channel samples Moose 2: **1.6% Li_2O / 7.0m**
- Spodumene is low Fe; amenable to optical sorting



DeStaffany Mine from Great Slave Lake, 1955



MOOSE 1 CHANNEL SAMPLE RESULTS

North Arrow

MINERALS INC.

MOOSE 1 (>0.8 % Li₂O)

Assays >0.8% Li₂O

— channel sample
● grab sample

3.78%

1m @2.38%

2m @1.38%

3m @1.86%

2m @1.75%

3m @1.86%

2m @0.81%

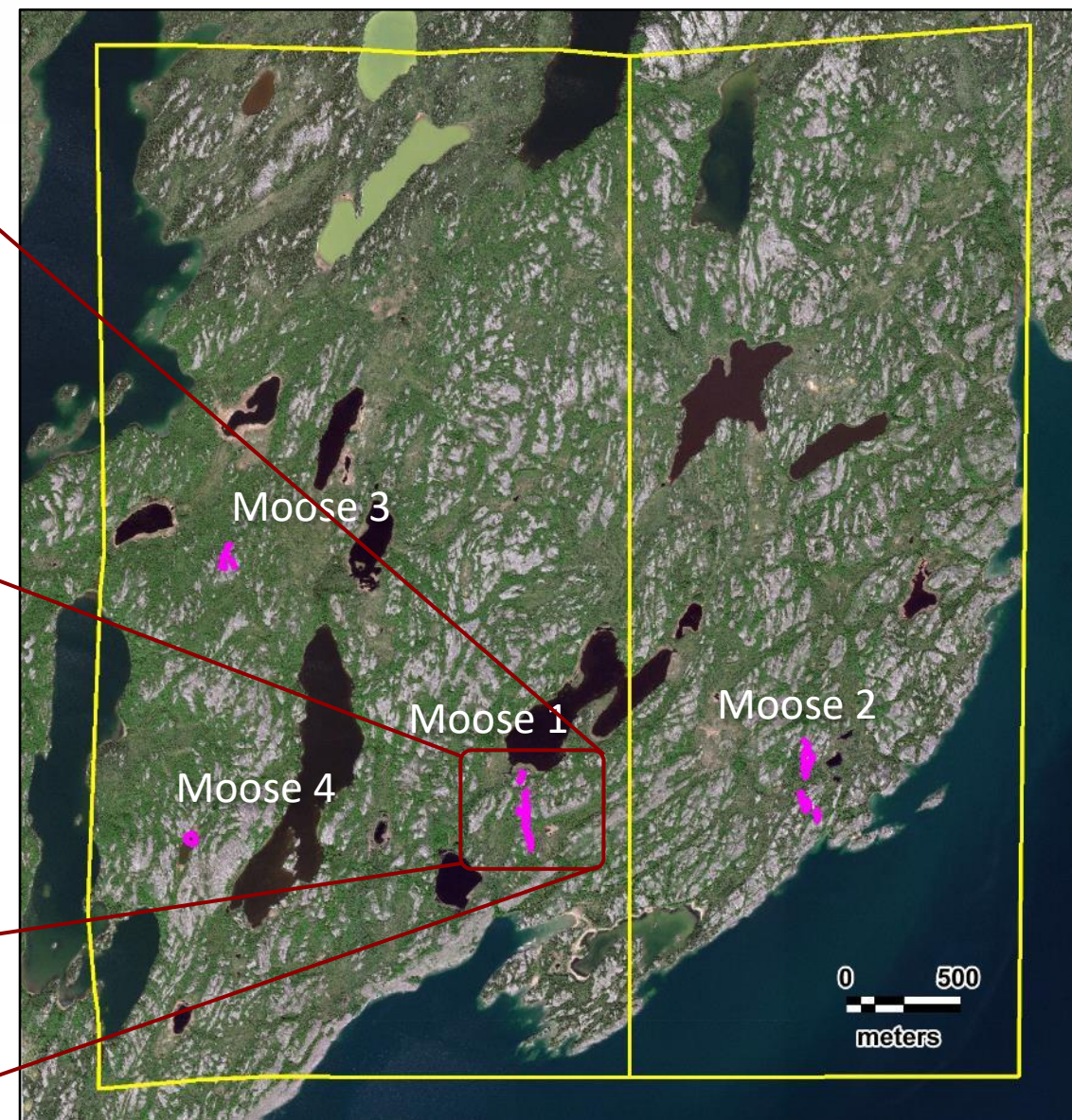
7.5m @1.50%

3m @0.84%

4m @1.42%

4m @1.81%

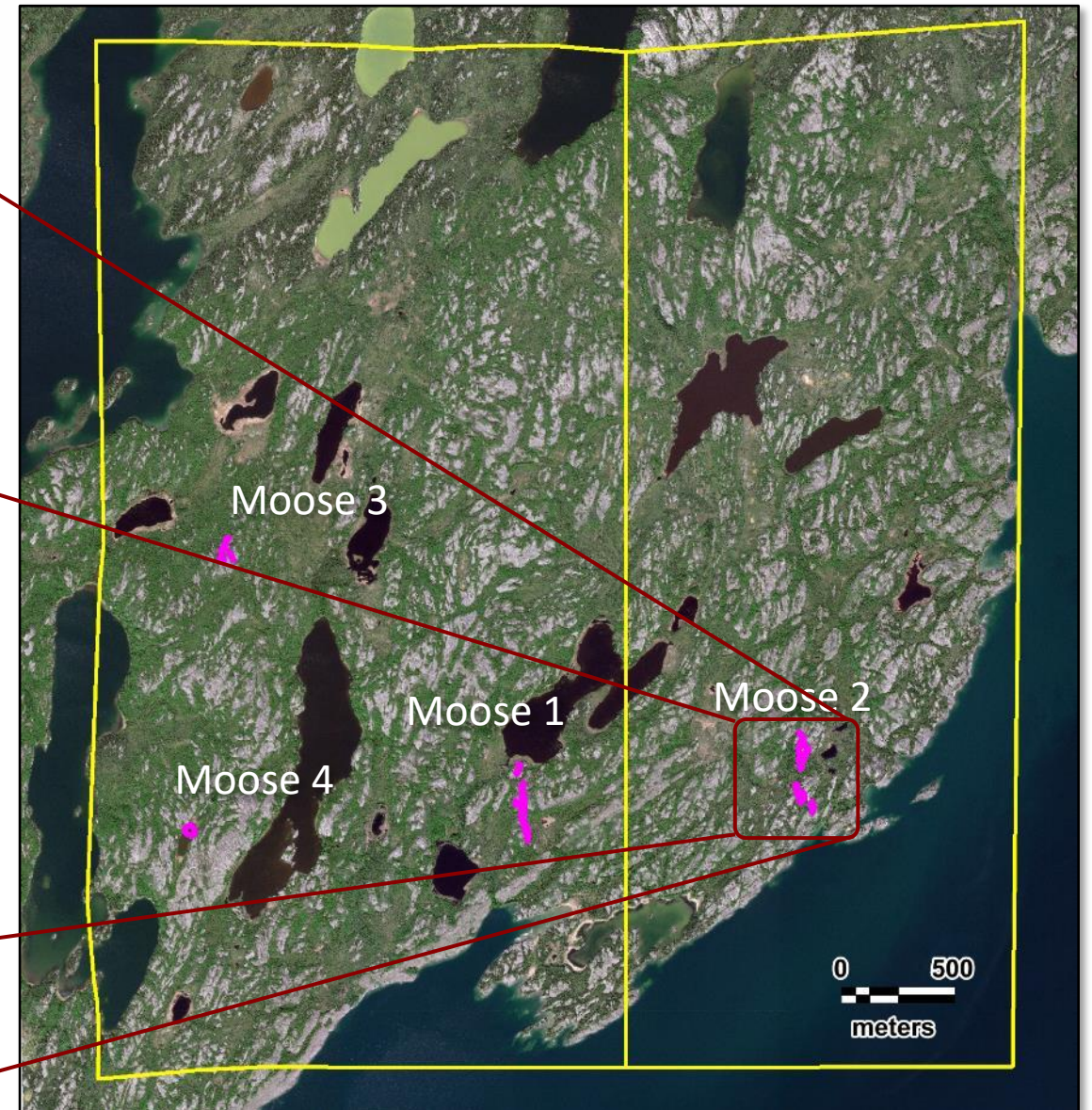
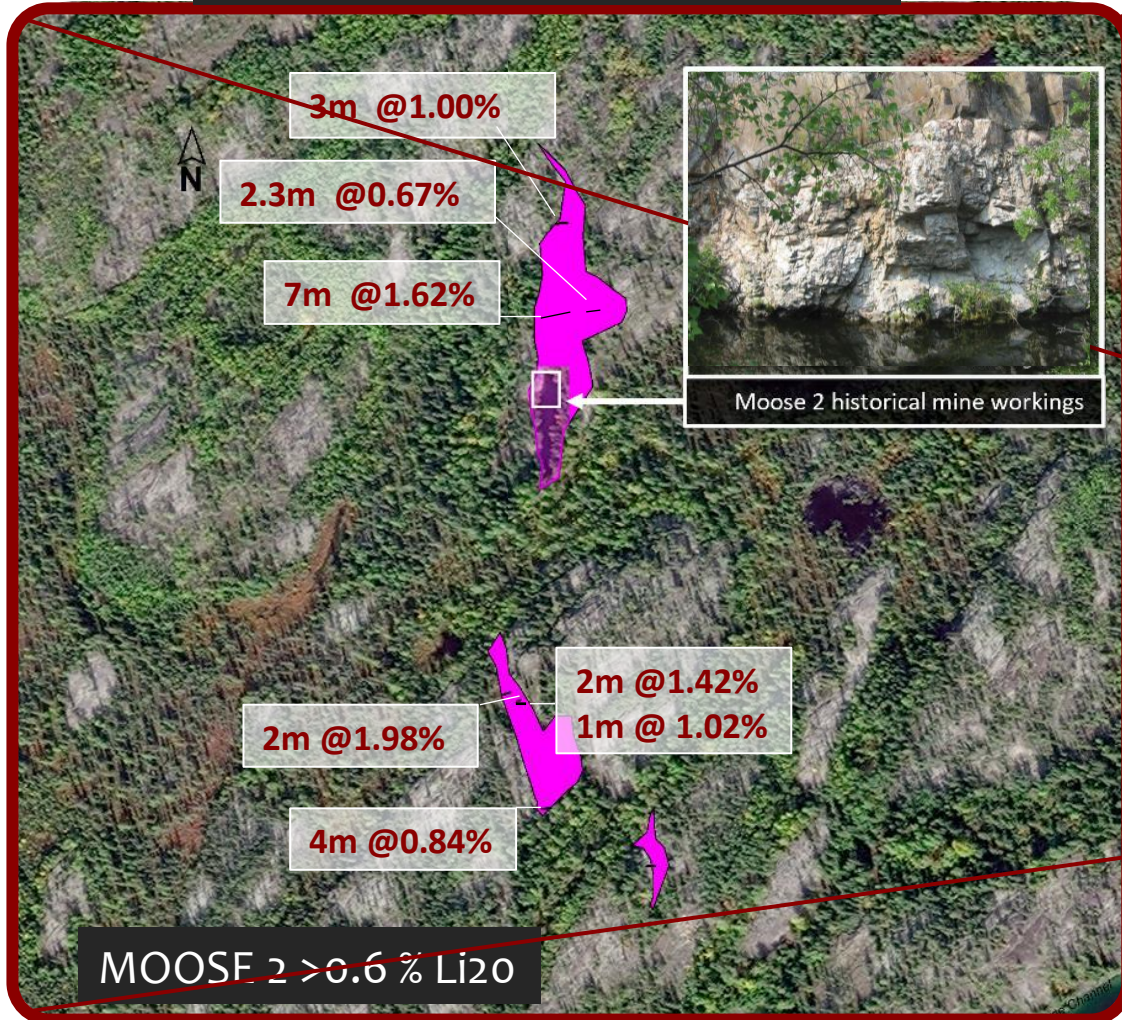
100 M



MOOSE 2 CHANNEL SAMPLE RESULTS

North Arrow

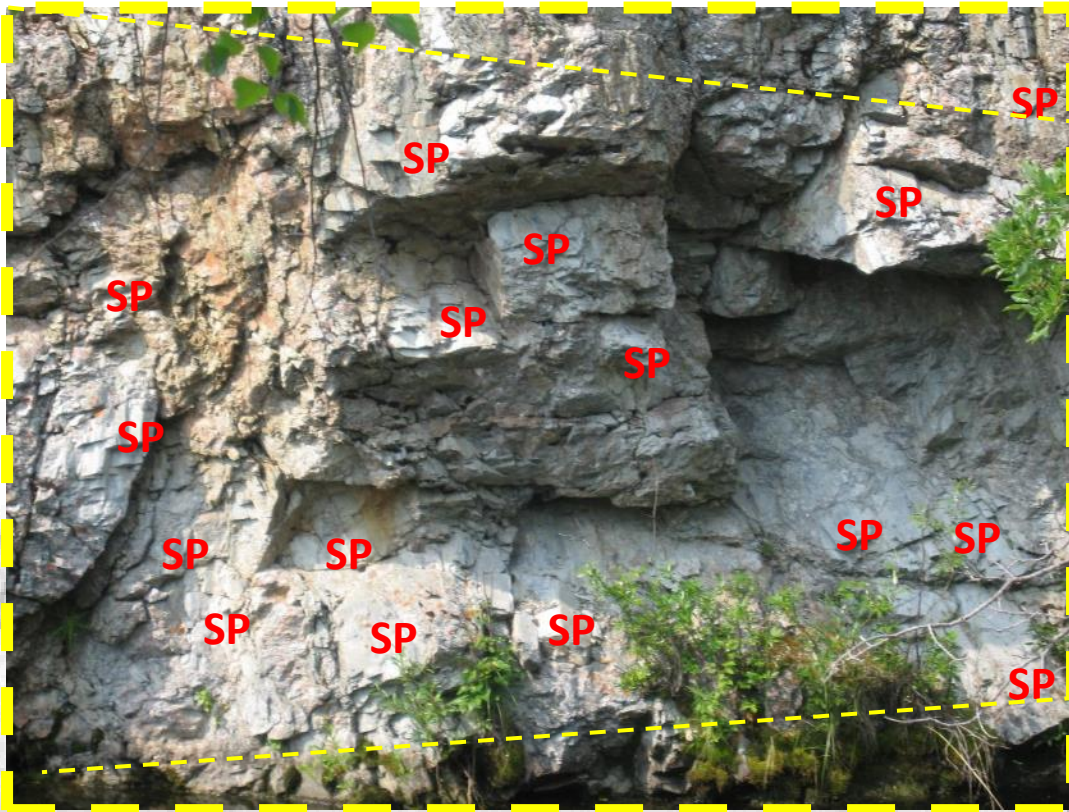
Historical and from 2023



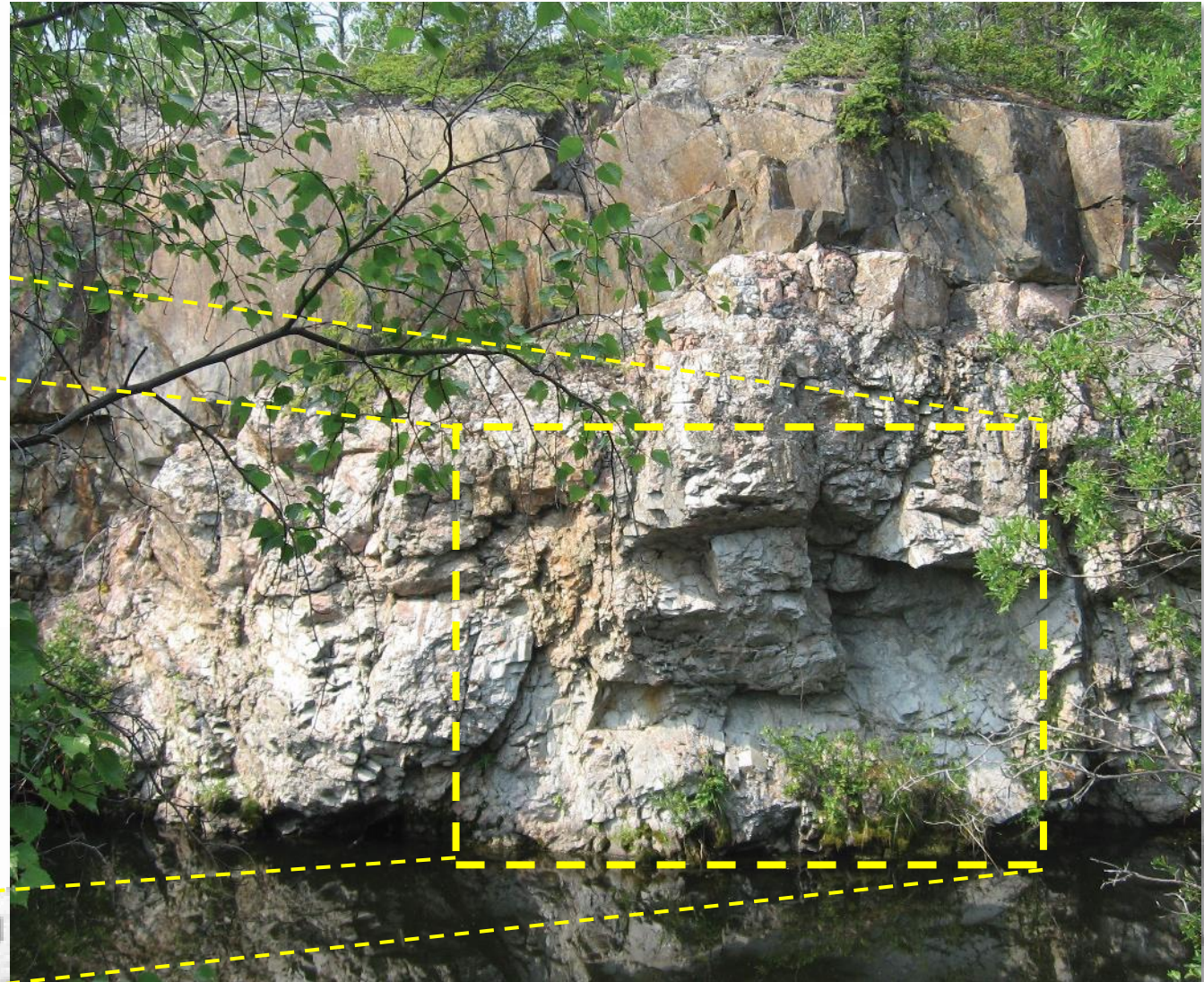


MOOSE 2 PEGMATITE – Historic Mining

- Historic mining focused on recovering Ta and Nb
- Megacrystic (up to 1m) spodumene in pit wall
- Spodumene not targeted by past mining
- Pegmatite dips 50-80 degrees to the west (away from view on right)



SP = SPODUMENE (Field of view height ~4m)



Megacrystic spodumene in pit wall (Approximate wall height: 8m)



DESTAFFANY PROJECT – Way Forward 2024

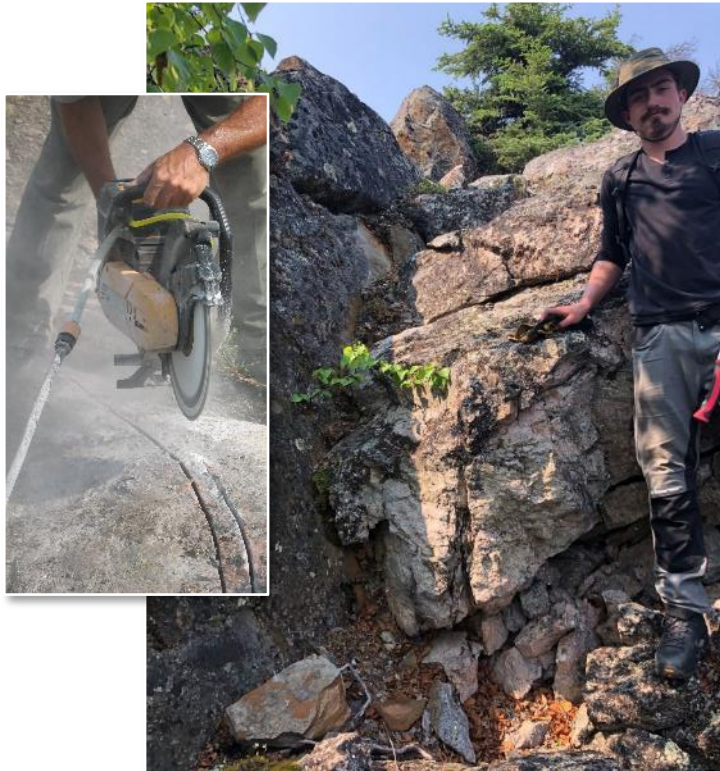
Can the Moose pegmatites produce a marketable spodumene concentrate that could be shipped south by barge and rail?

Completed 2023

- Mapping / channel sampling, prospecting.
- Mineral characterization studies.
- Drill and camp permit in place.

Spring / summer 2024

- Delineation drilling to define strike & depth extent of spodumene zones.
- Work to define a resource.



**Hay River
on Great
Slave Lake**



Great Slave Lake Barge

NAR LITHIUM PROJECTS IN THE NWT

Advanced/Discovery Stage Lithium



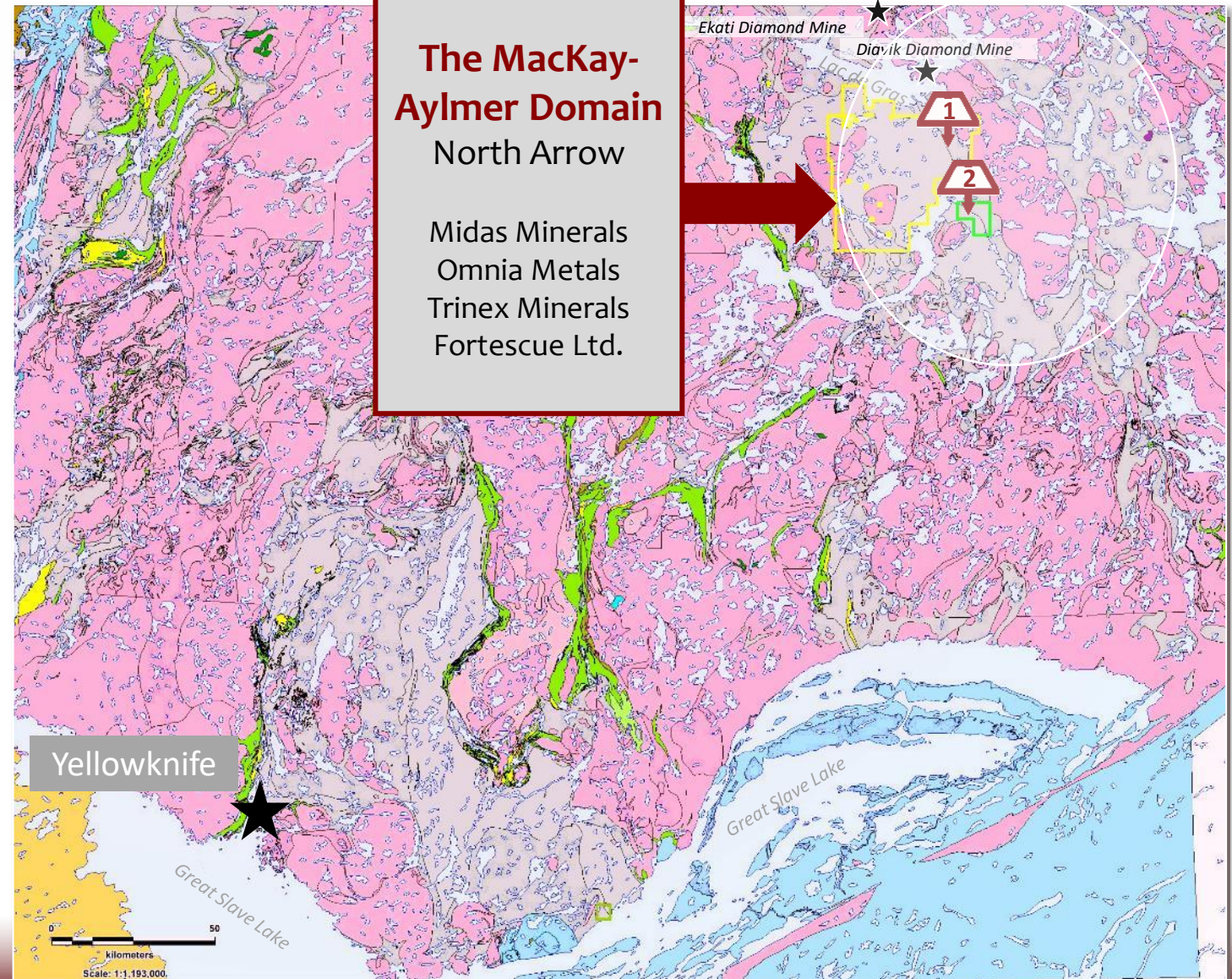
LDG Lithium (100%)

*Spodumene lithium
pegmatite showings*



Mackay Lithium (100%)

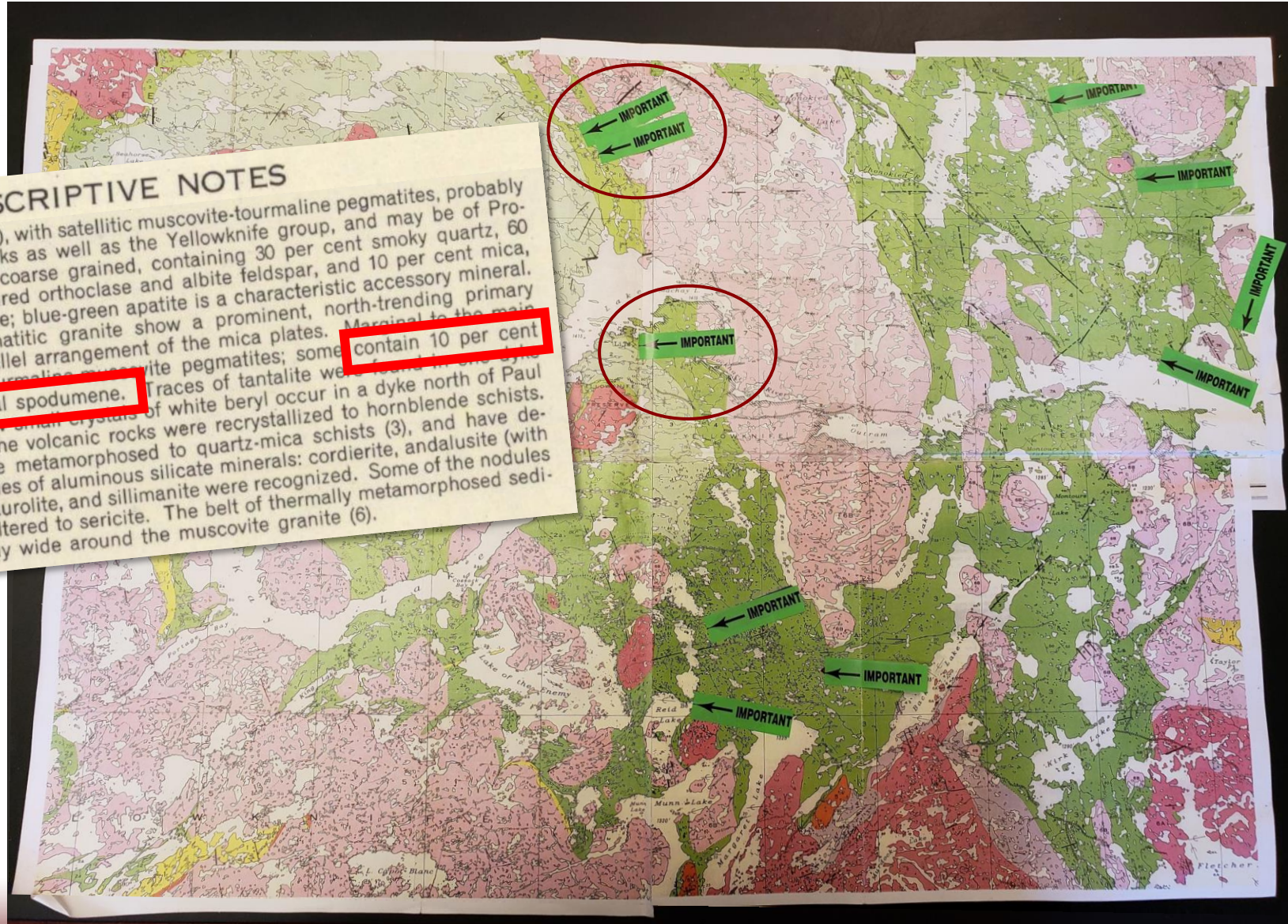
*Spodumene lithium
pegmatite showings*



GEOLOGICAL SURVEY MAP 977A FROM THE 1940'S

DESCRIPTIVE NOTES

A muscovite-biotite granite (6), with satellitic muscovite-tourmaline pegmatites, probably intrudes the older granitic rocks as well as the Yellowknife group, and may be of Proterozoic age. The granite is coarse grained, containing 30 per cent smoky quartz, 60 per cent white to cream-coloured orthoclase and albite feldspar, and 10 per cent mica, mostly a light amber muscovite; blue-green apatite is a characteristic accessory mineral. Certain phases of this pegmatitic granite show a prominent, north-trending primary foliation, outlined by the parallel arrangement of the mica plates. Marginal to the main arcuate granite mass are tourmaline-muscovite pegmatites; some contain 10 per cent of the lithium silicate mineral spodumene. Traces of tantalite were found in some of the pegmatites. Crystals of white beryl occur in a dyke north of Paul Lake. Near granite bodies the volcanic rocks were recrystallized to hornblende schists. The sedimentary rocks were metamorphosed to quartz-mica schists (3), and have developed ovoid knots or nodules of aluminous silicate minerals: cordierite, andalusite (with chiastolite cross), garnet, staurolite, and sillimanite were recognized. Some of the nodules have been hydrothermally altered to sericite. The belt of thermally metamorphosed sedimentary rocks is particularly wide around the muscovite granite (6).

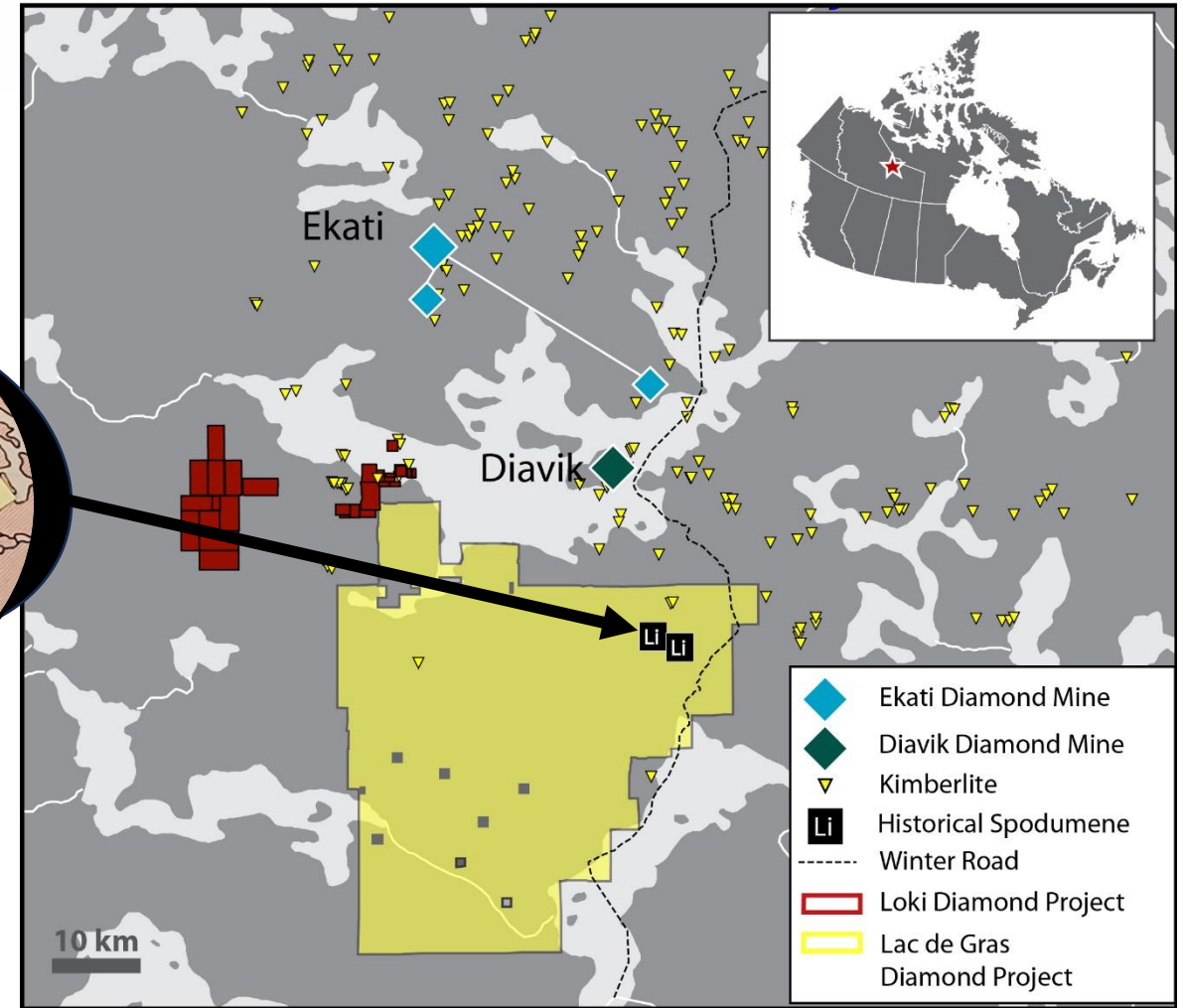
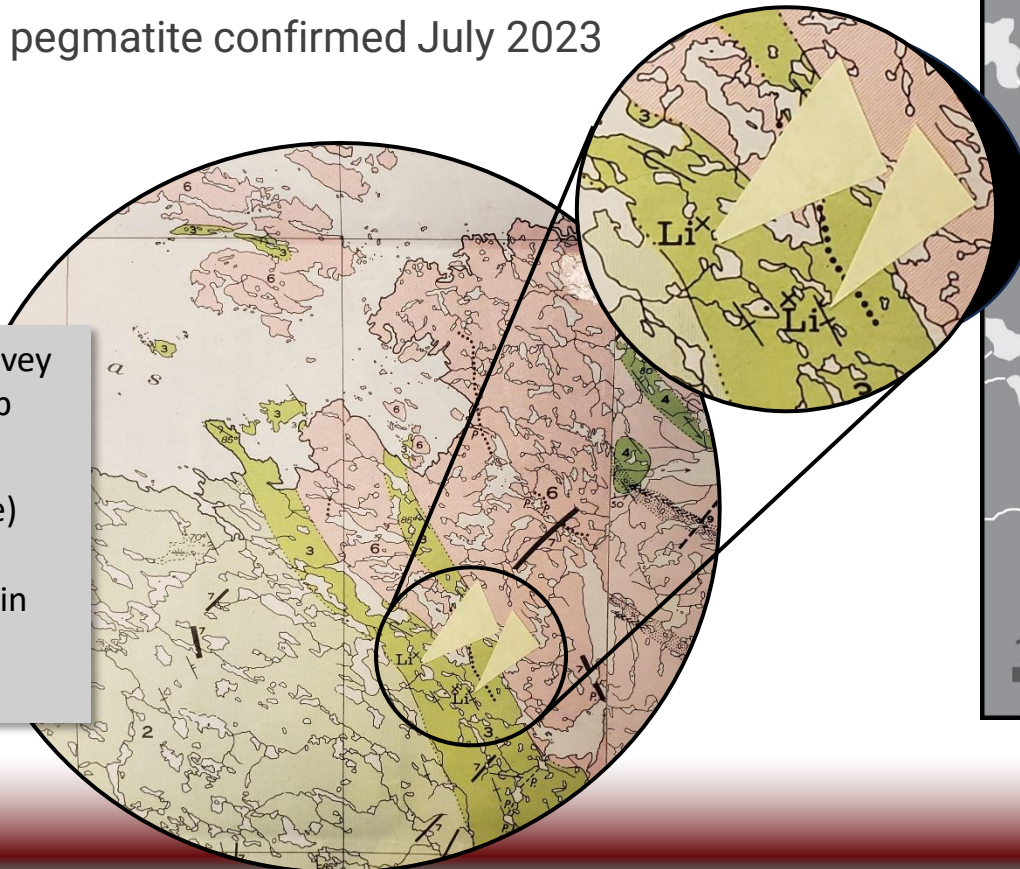


LDG LITHIUM PROJECT – NAR 100%

- “New” project benefits from extensive exploration dataset (LIDAR; geophysics, till sampling, surficial mapping)
- Located along the Lac de Gras winter road alignment
- GSC mapping in the 1940’s identified pegmatites with “10% of the lithium silicate mineral spodumene”
- Spodumene pegmatite confirmed July 2023

Geological Survey of Canada map 977A.

Li (spodumene) pegmatite showings within LDG Project claims.



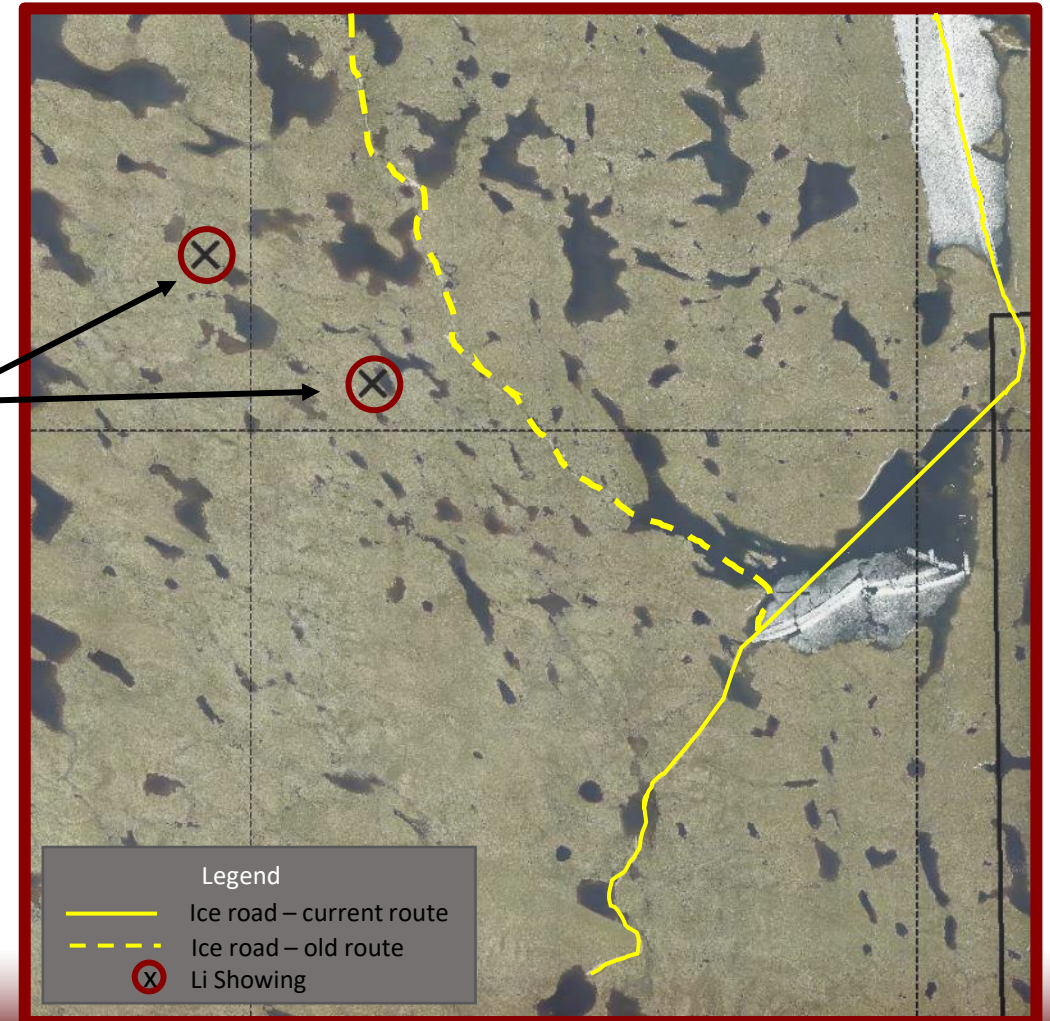
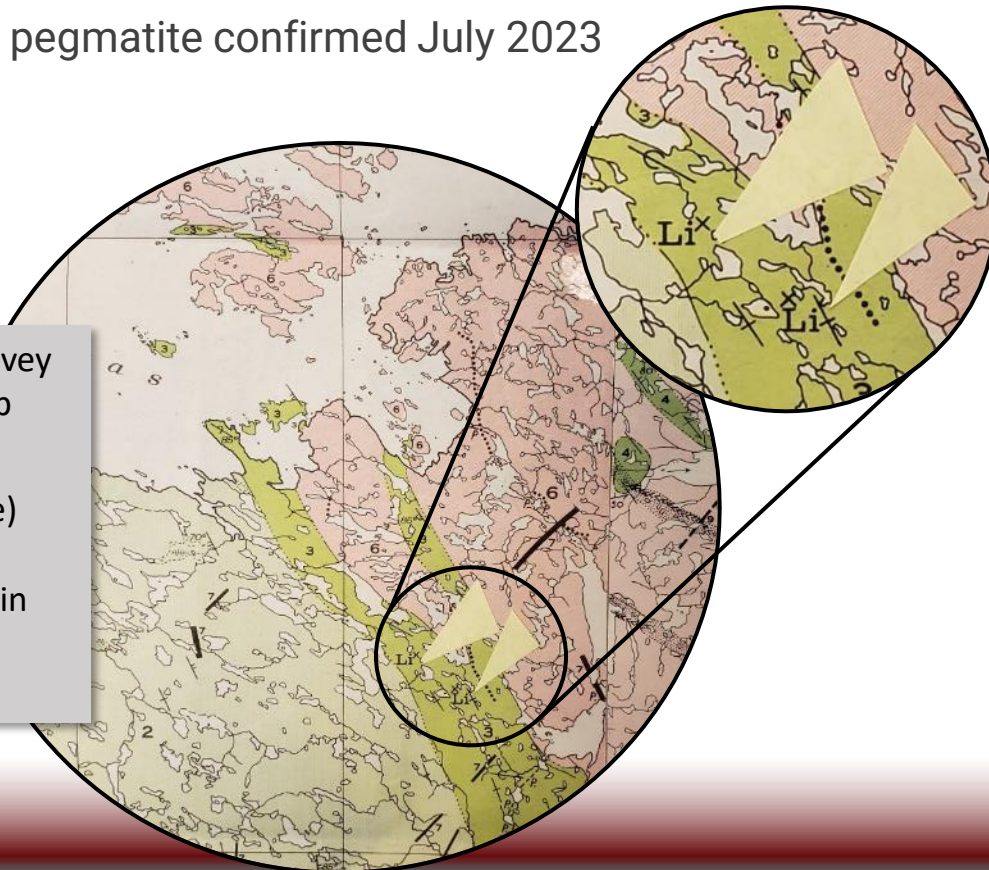


LDG LITHIUM PROJECT – NAR 100%

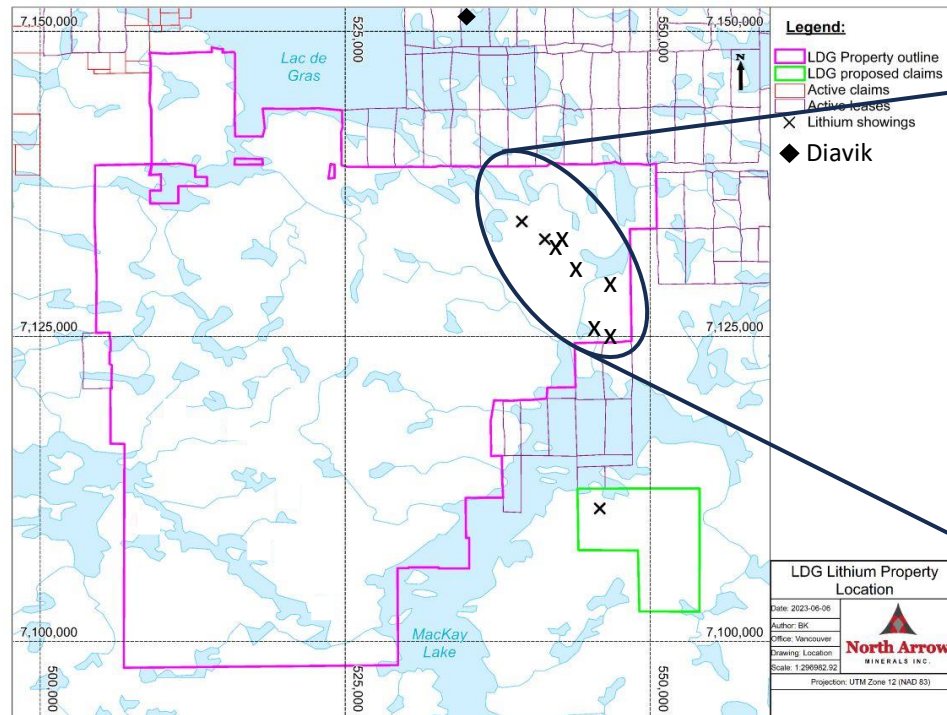
- “New” project benefits from extensive exploration dataset (LIDAR; geophysics, till sampling, surficial mapping)
- Located along the Lac de Gras winter road alignment
- GSC mapping in the 1940’s identified pegmatites with “10% of the lithium silicate mineral spodumene”
- Spodumene pegmatite confirmed July 2023

Geological Survey of Canada map 977A.

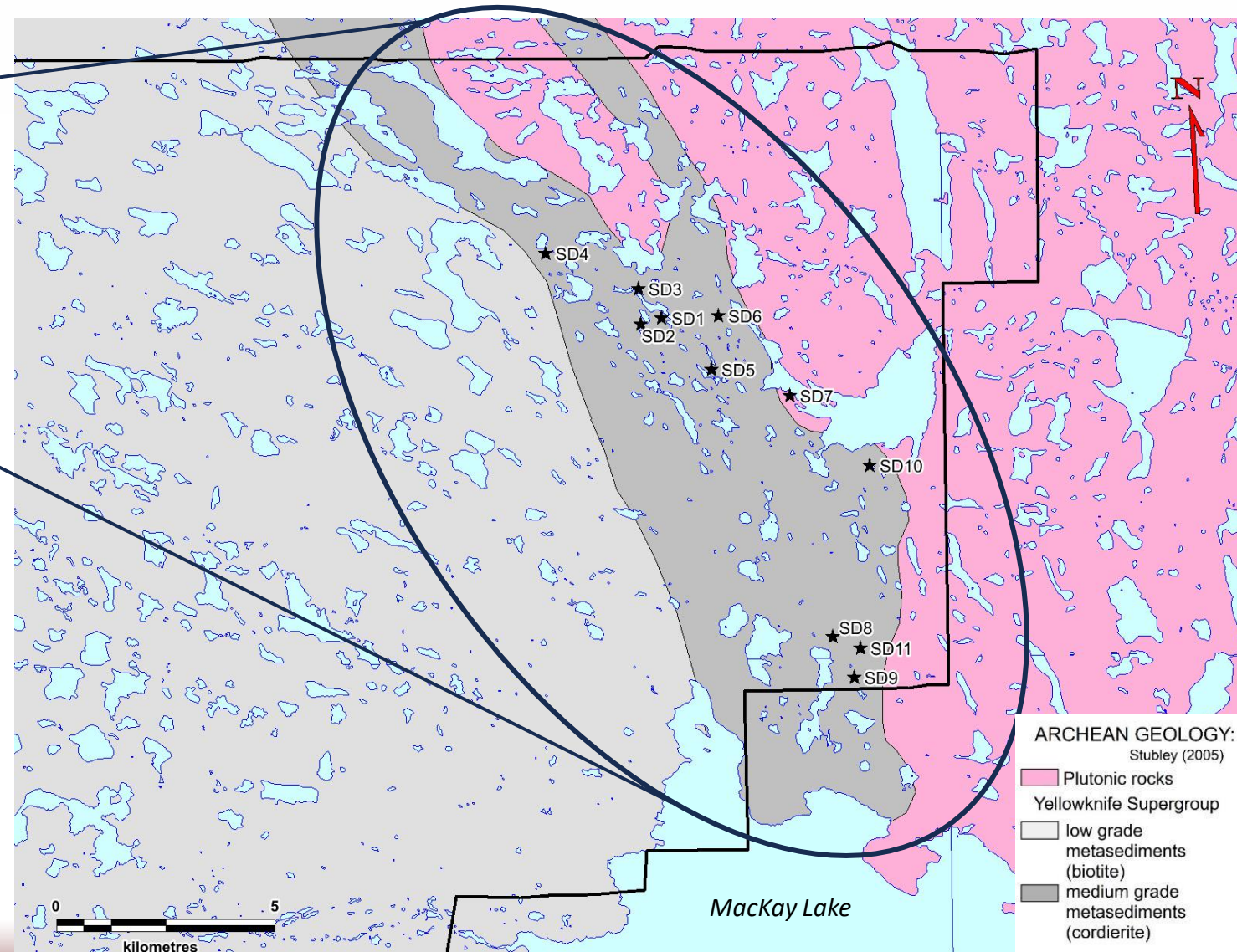
Li (spodumene) pegmatite showings within LDG Project claims.



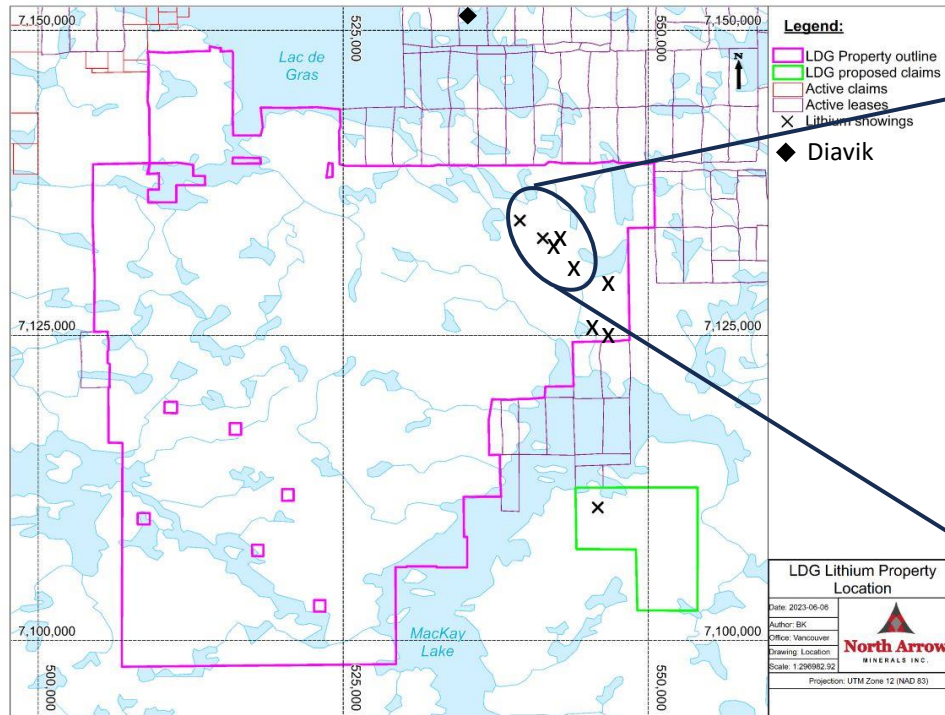
LDG SPODUMENE PEGMATITES – GEOLOGICAL SETTING



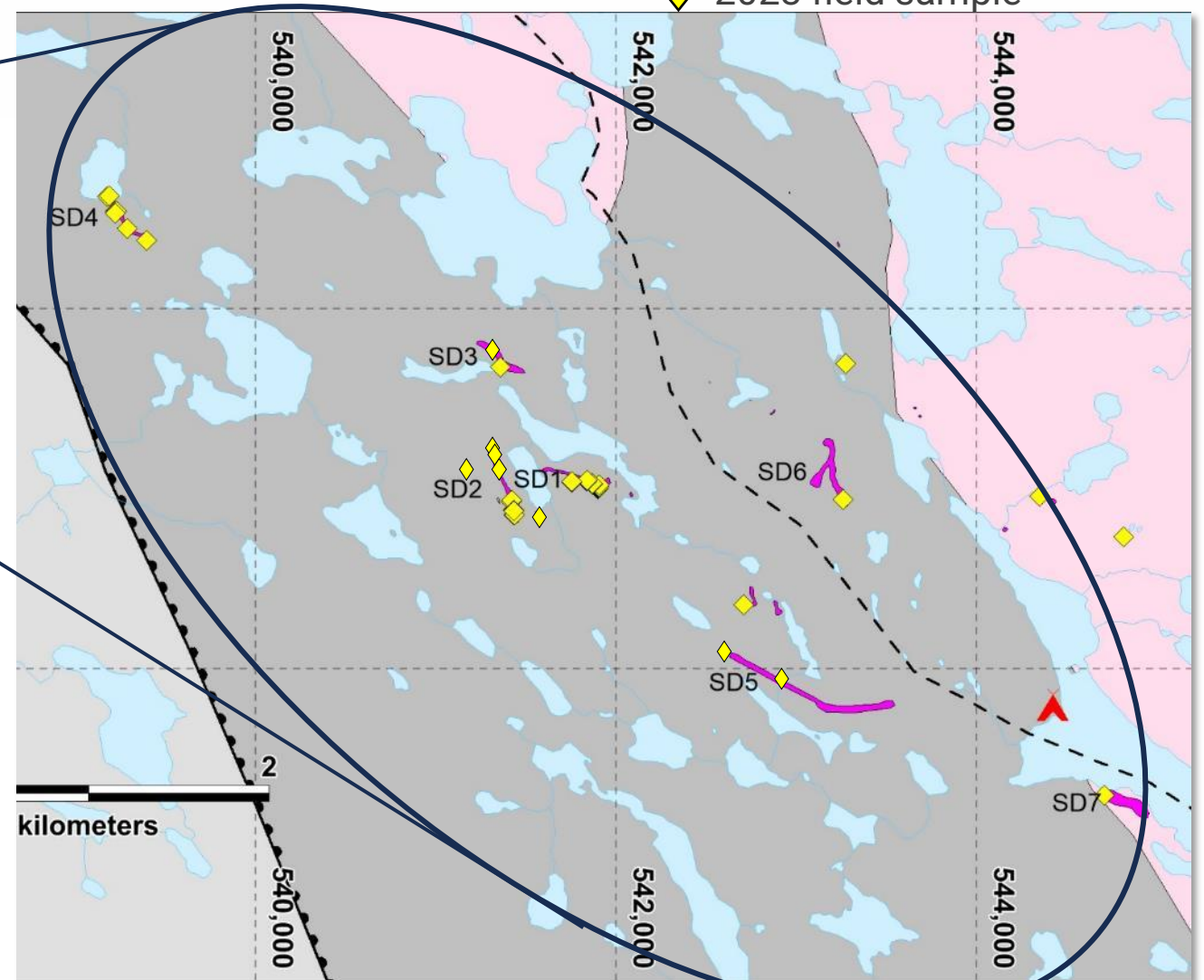
- ~20km prospective corridor
- Along transportation infrastructure
- Numerous pegmatites
- SD2 & SD4 significantly spodumene mineralization
- ~10-20 m wide & > 400 m long



LDG SPODUMENE PEGMATITES



◆ 2023 field sample



SD2 and SD4 significantly spodumene bearing; both ~10-20 m wide & over 400 m long.

SD2 SPODUMENE PEGMATITES



Spodumene
megacryst

Mapping / prospecting in Sept identified at least 3 additional subparallel pegmatites to SD2; including 1 sub-cropping, ~200m long, hosting spodumene.

Will be
drilled in
spring /
summer
2024!

1.53% Li_2O

3.19% Li_2O

5.57% Li_2O

1.46% Li_2O

0.41% Li_2O over 2m

1.15% Li_2O over 3m

0.58% Li_2O over 3m

Legend

grab sample result

channel sample result

- ◆ Fall 2023 sample
- ◆ Summer 2023 sample
- Channel orientation

0 100
metres

LDG LITHIUM PROJECT –
2023 SD2 SAMPLE RESULTS



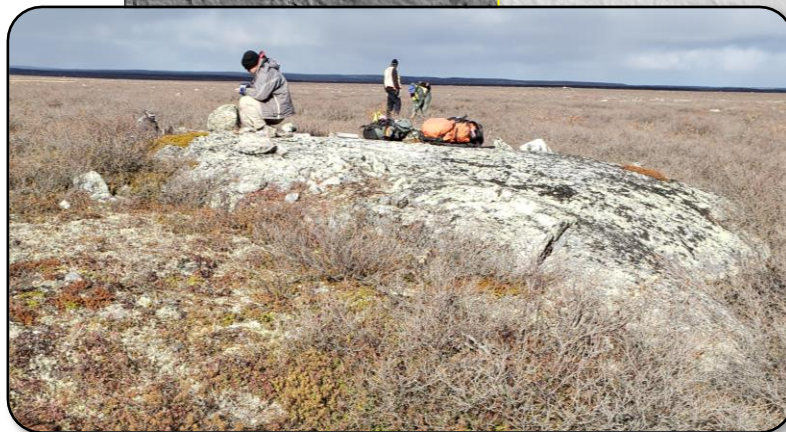
SD2 SPODUMENE PEGMATITE – SOUTHERN EXPOSURE

SD4



SD4 PEGMATITE

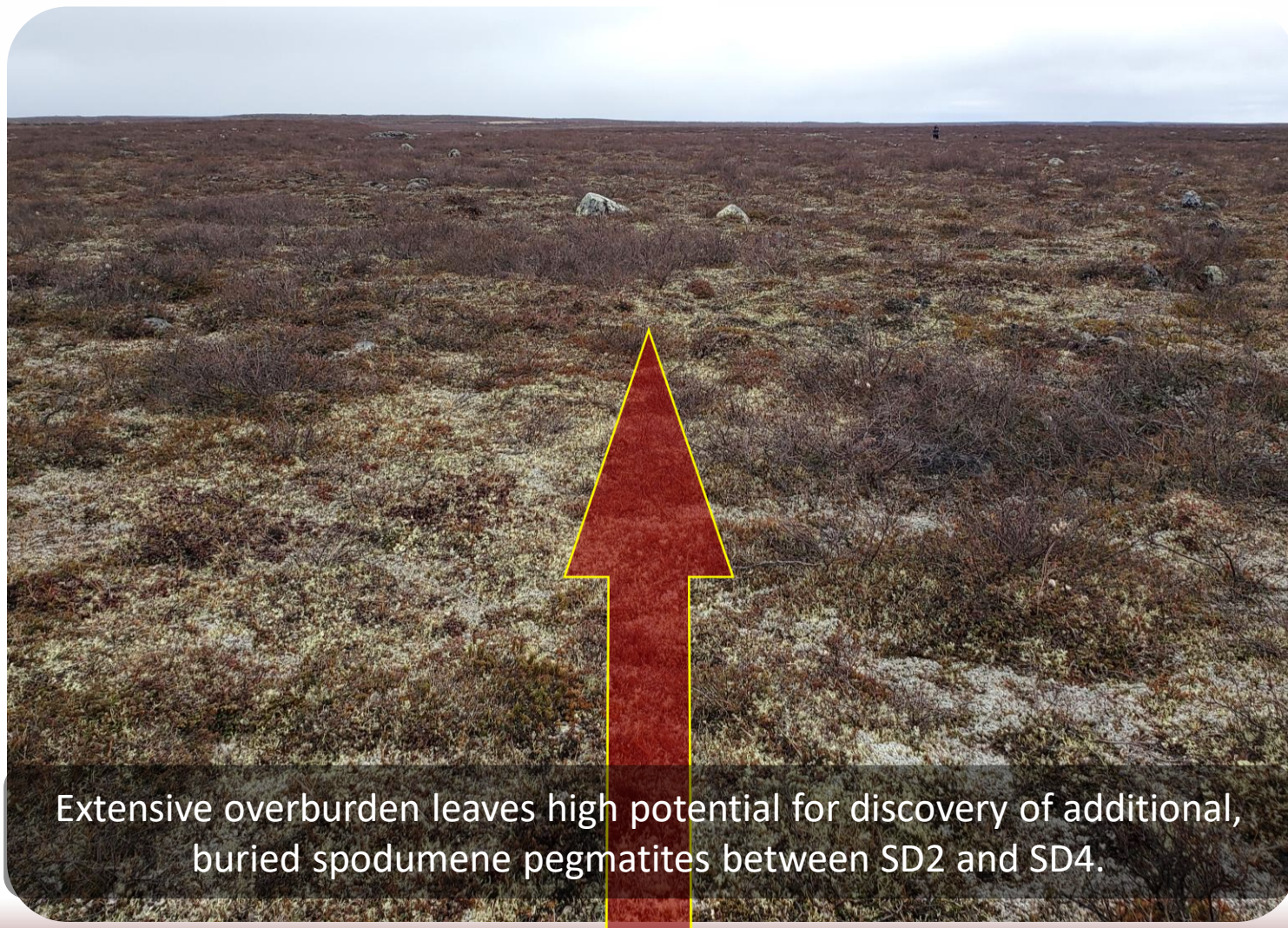
- 5 of 7 representative grab samples returned from 1.10% to 2.17% Li_2O .
- Interpreted as steeply dipping (75-80 degrees).
- 10-20 m wide and over 400 m in strike length.



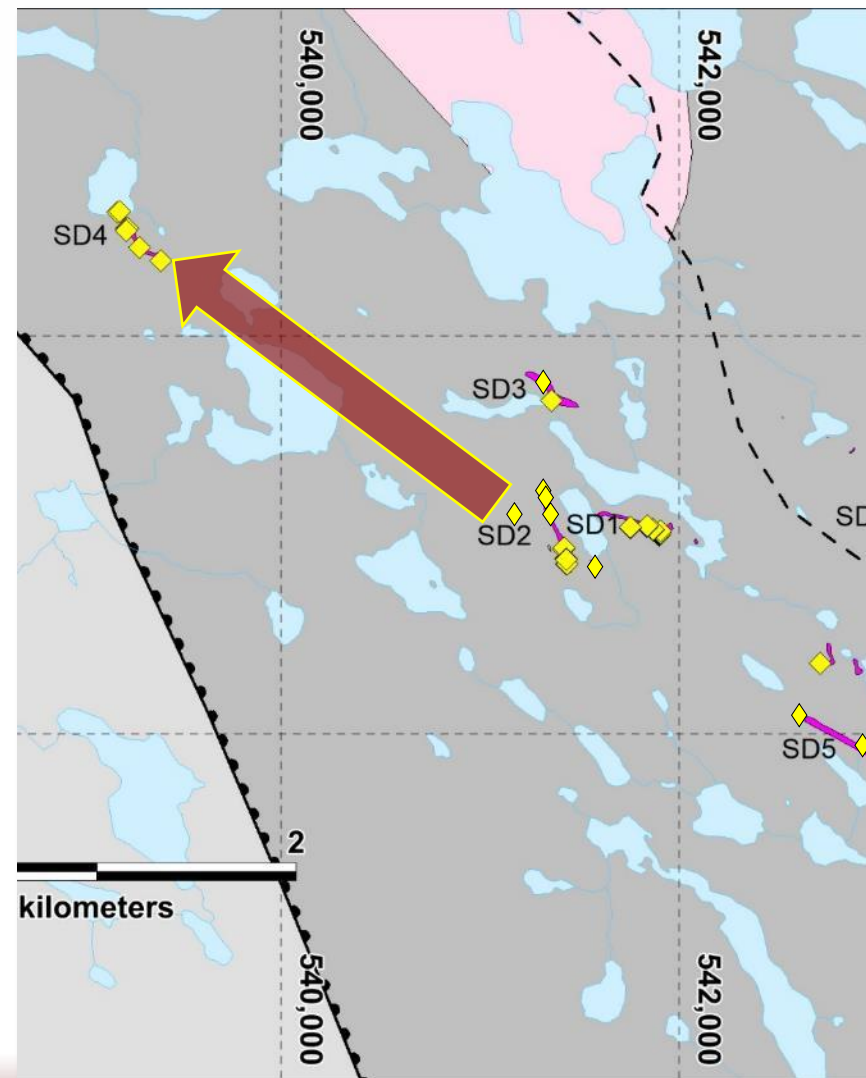


POTENTIAL FOR MORE DISCOVERY BETWEEN SD2 & SD4

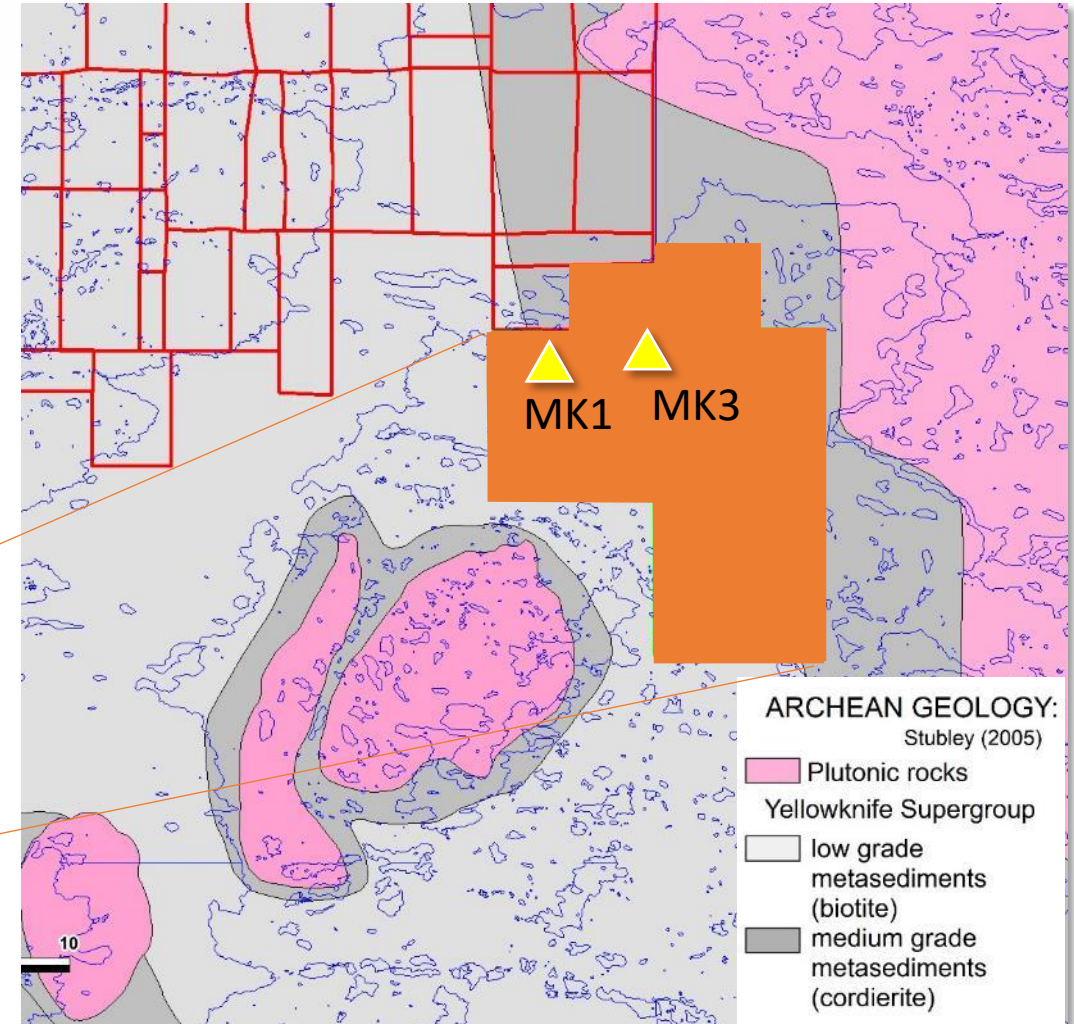
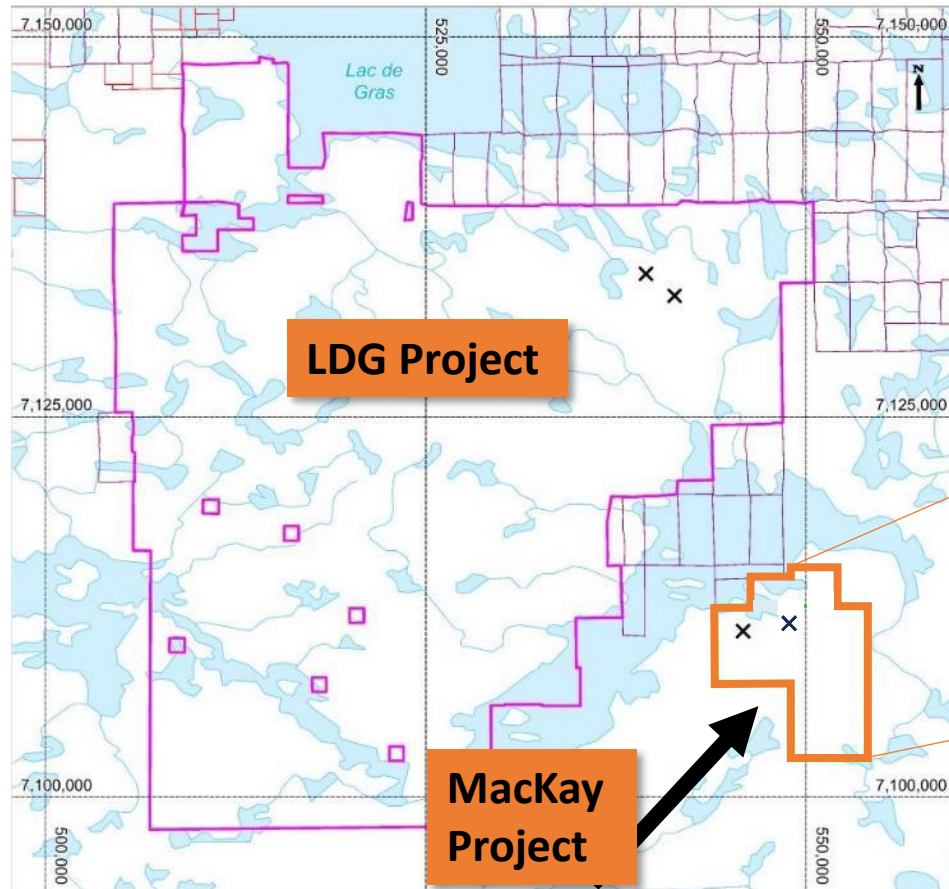
◆ 2023 field sample



Extensive overburden leaves high potential for discovery of additional, buried spodumene pegmatites between SD2 and SD4.

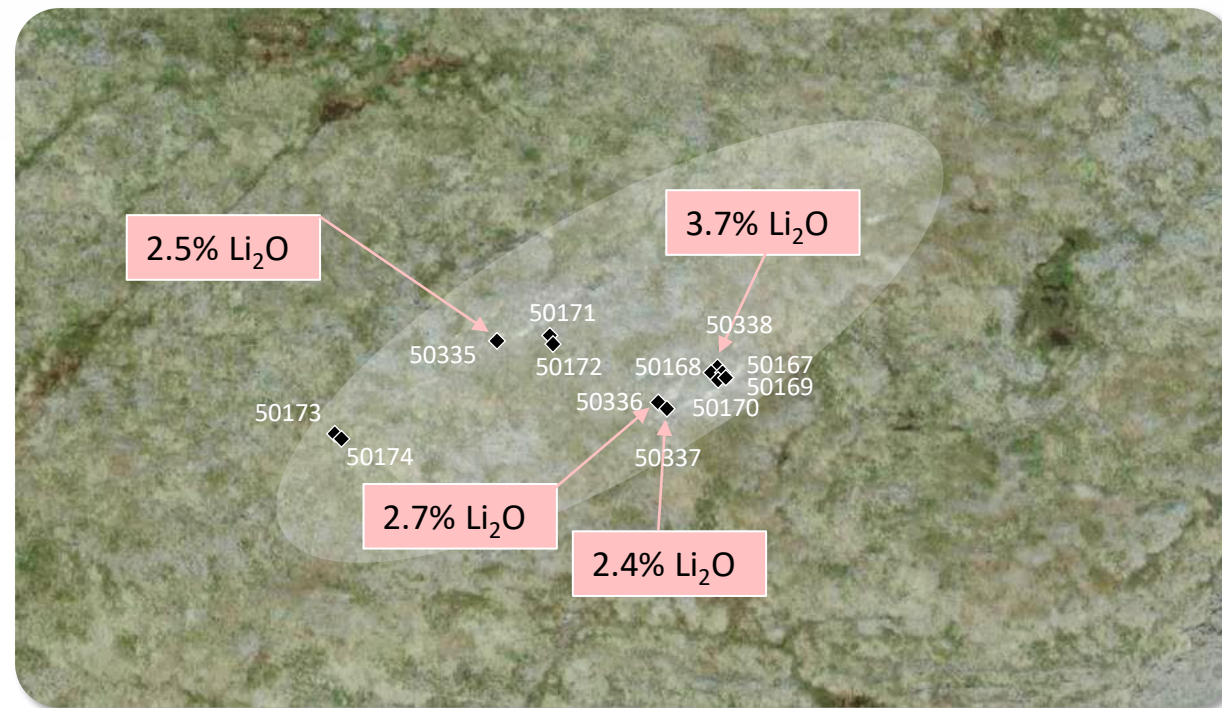
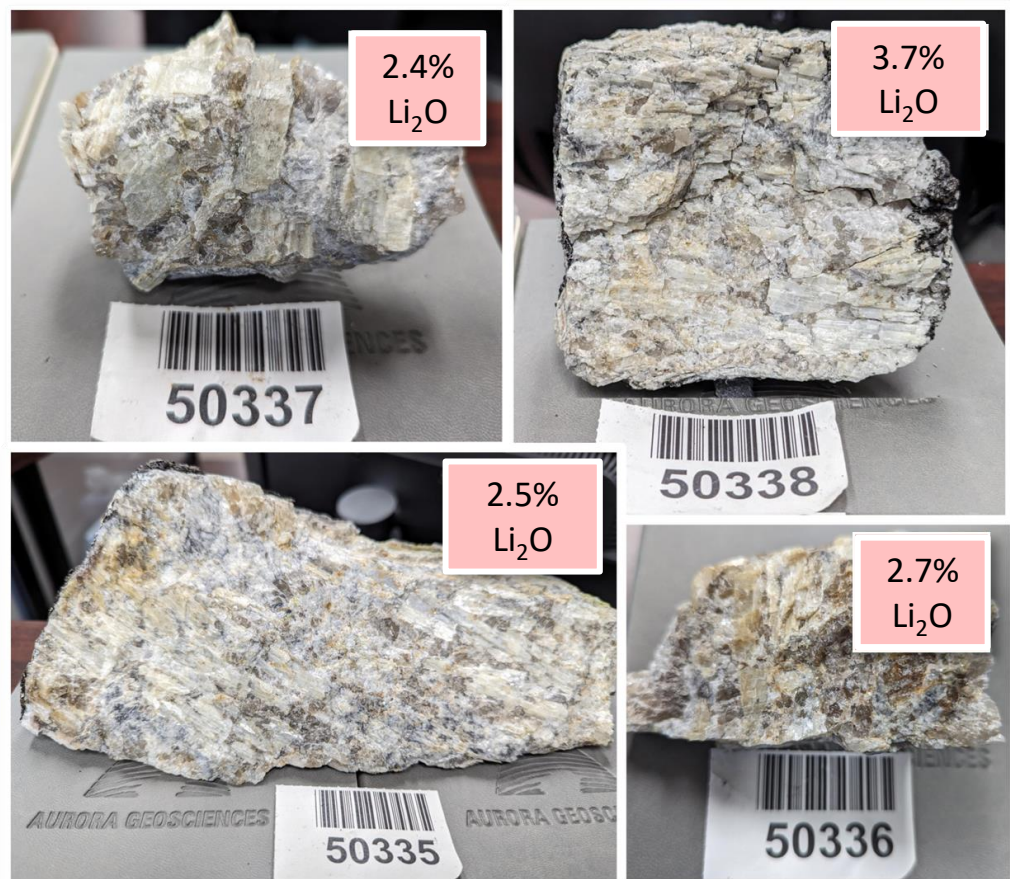


MackKay covers an additional 14 km length of the same prospective corridor as LDG.





MACKAY LITHIUM PROJECT – MK1 PEGMATITE



Sub-parallel pegmatite dykes from 0.5 to >10m wide; target area has combined width of ~150m; interpreted strike of >400m



MACKAY LITHIUM PROJECT – MK1 PEGMATITE

Legend

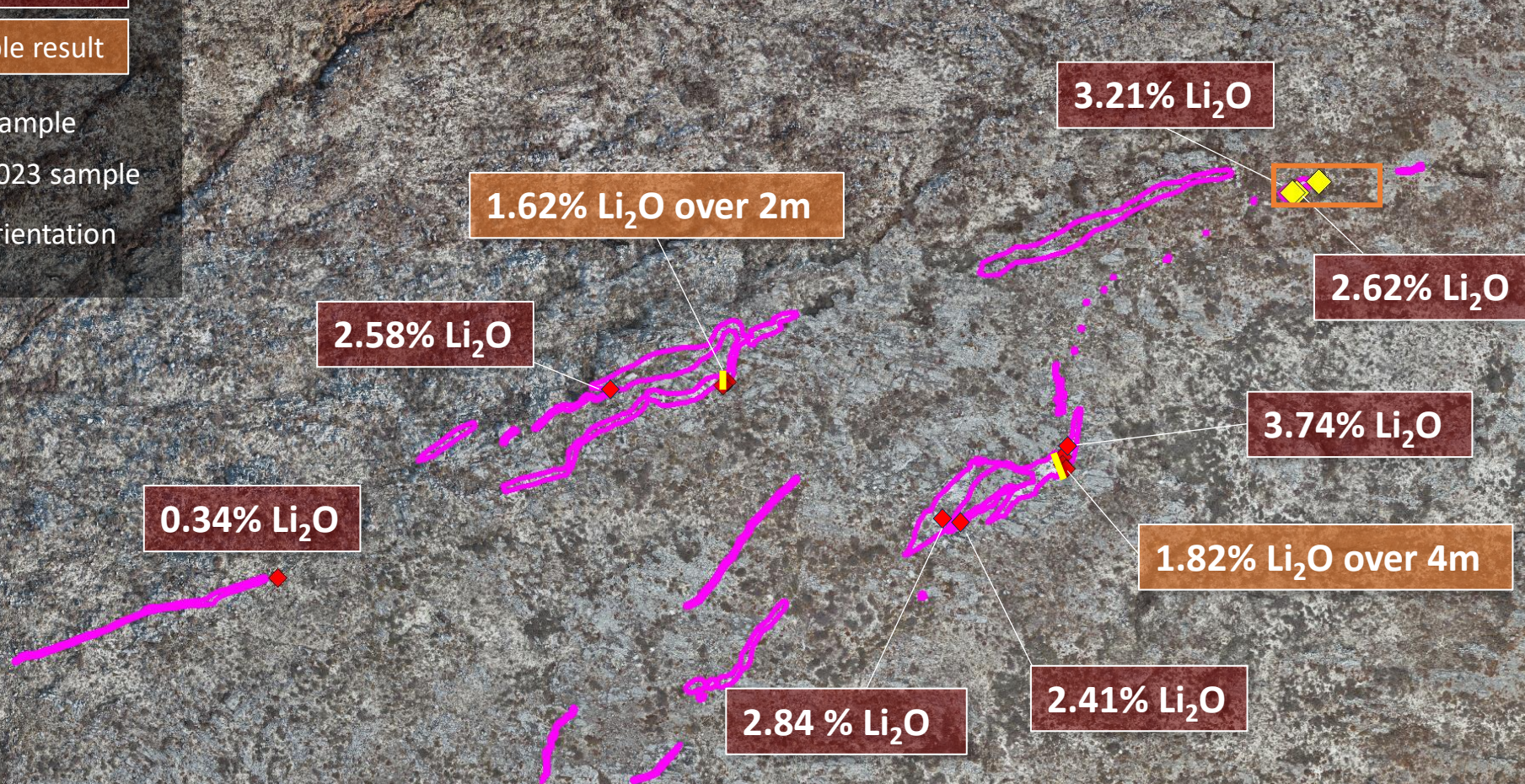
grab sample result

channel sample result

- ◆ Fall 2023 sample
- ◆ Summer 2023 sample
- Channel orientation



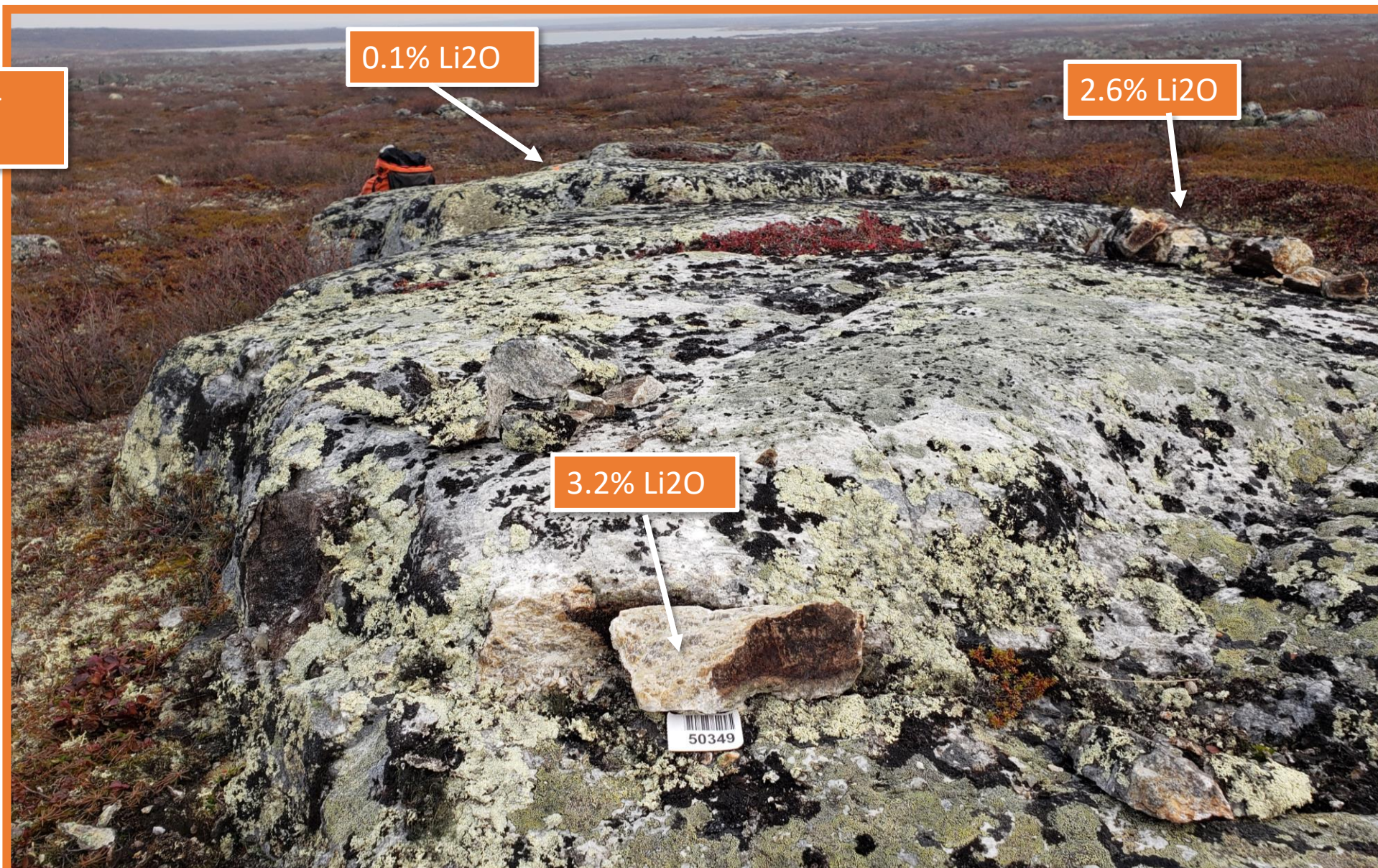
MACKAY LITHIUM PROJECT: 2023 MK1 SAMPLE RESULTS





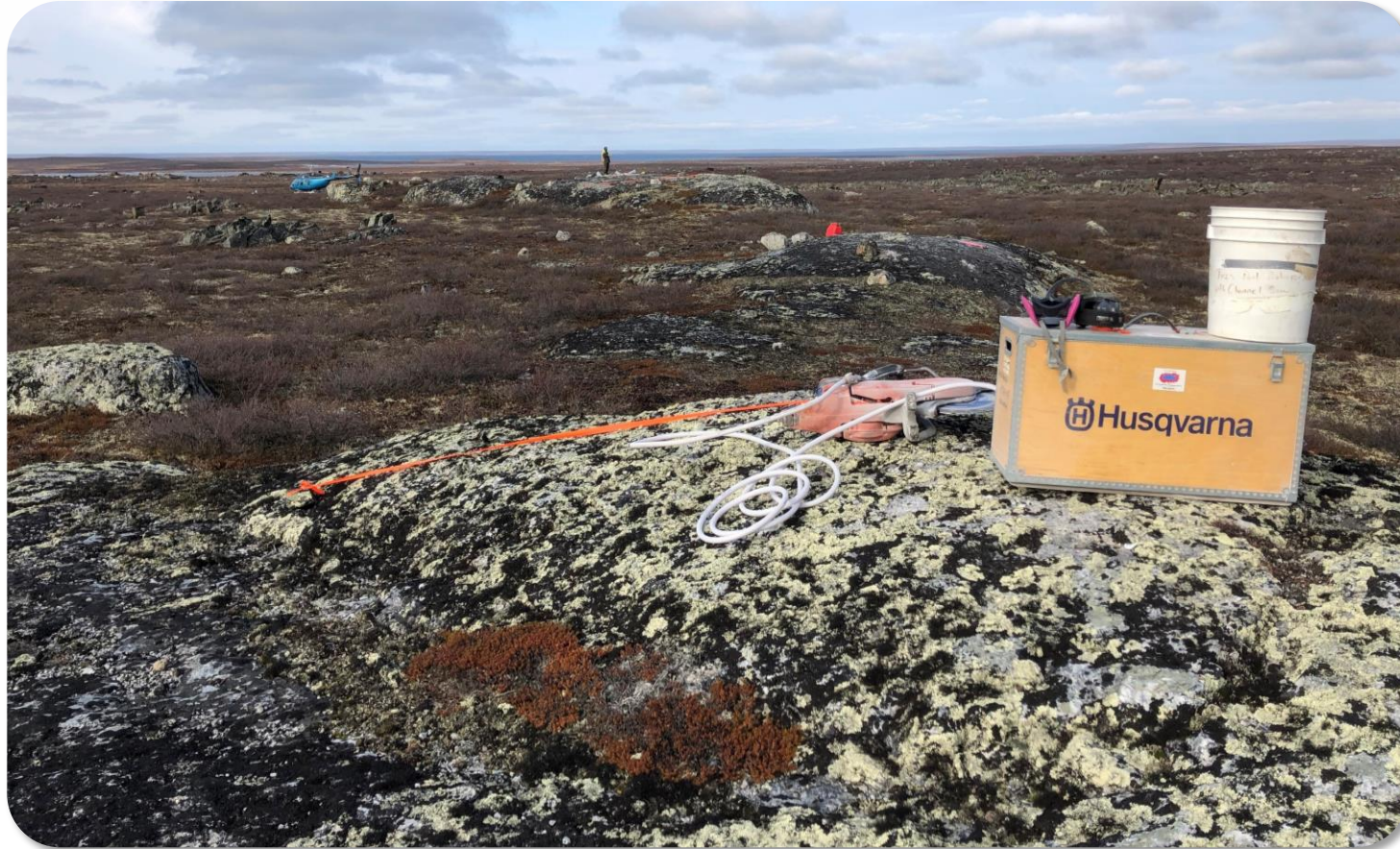
MACKAY: SEPT 2023 MK1 SAMPLE LOCATIONS

MK1 eastern outcrop -
Looking East





MACKAY– NEW DISCOVERY MK3

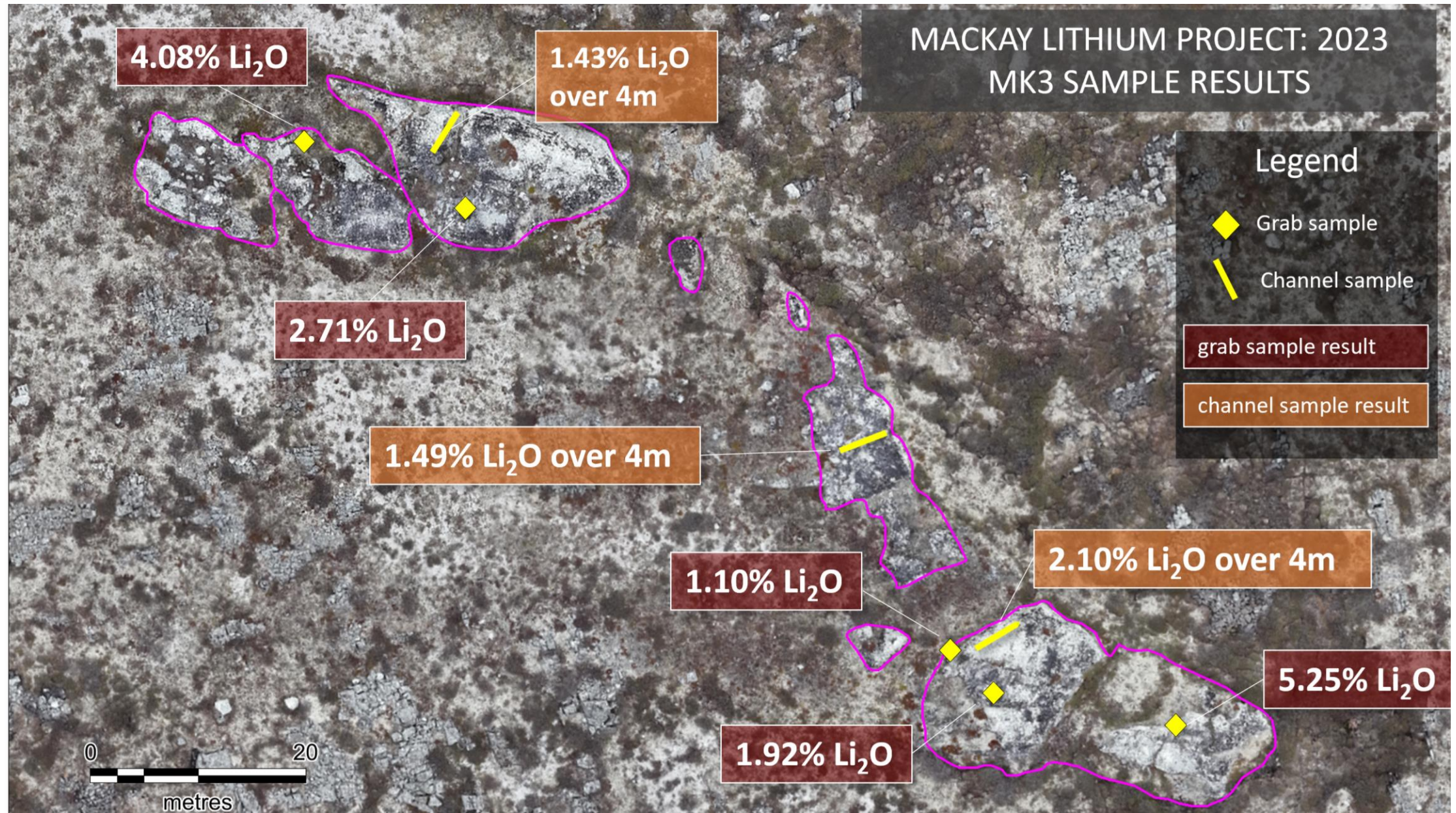


- 4.5 km east of MK1, a prominent 15 to 20m wide, white pegmatite exposure, ~ 130m long
- 2-30cm long spodumene crystals are present throughout the exposure.
- Remains open to the west where it extends beneath extensive overburden.
- Consistent lithium assays including 2.1% Li_2O over 4 metres.



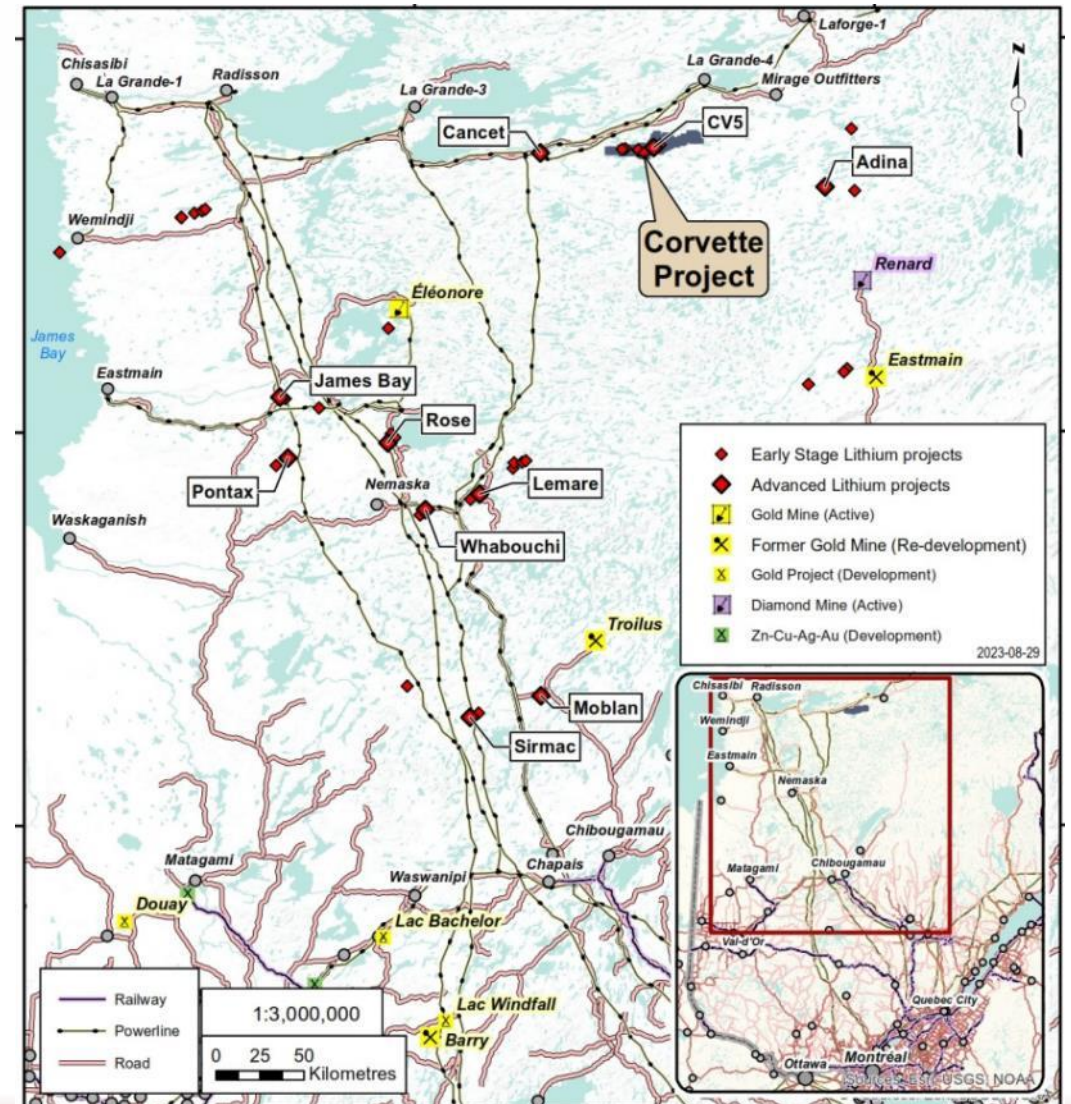
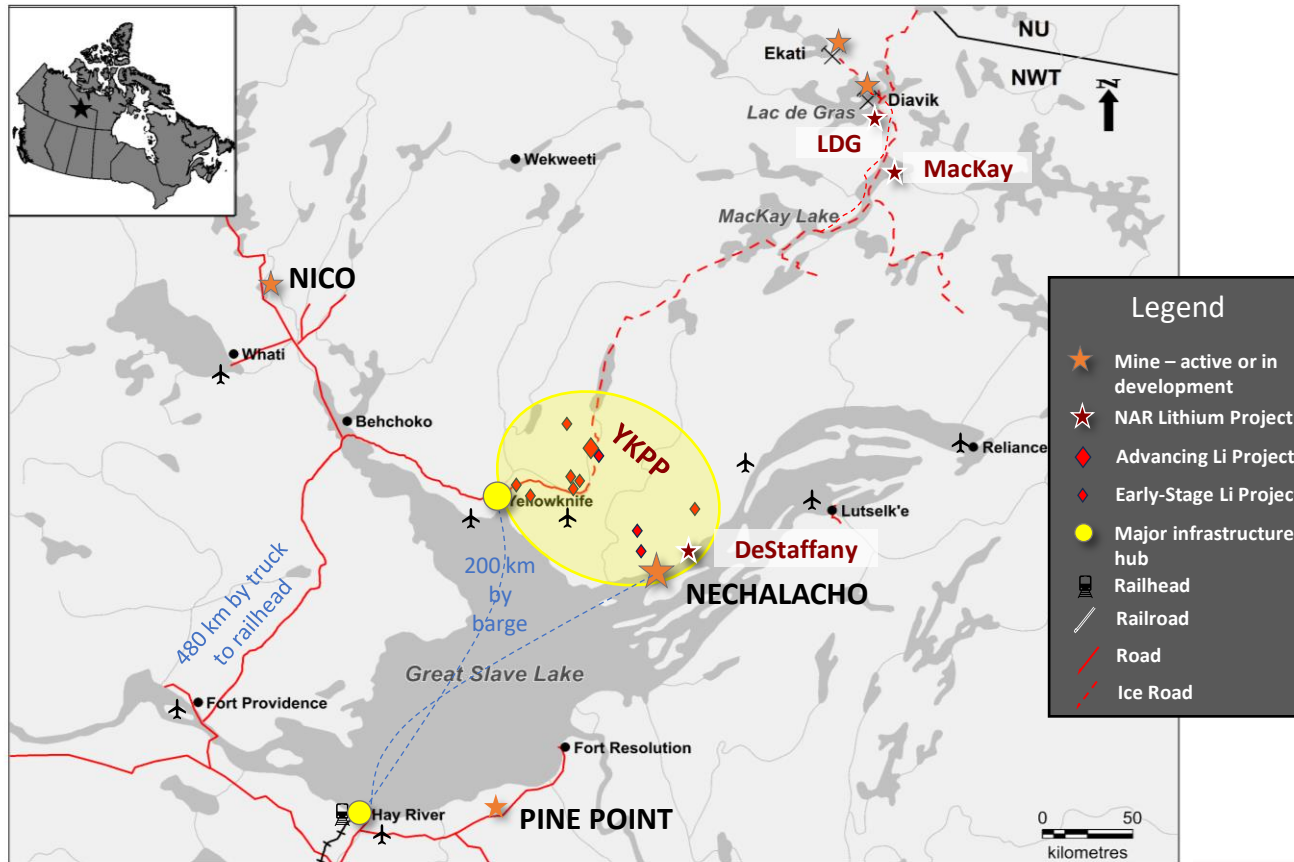


MACKAY: SEPT 2023 MK3 SAMPLE LOCATIONS



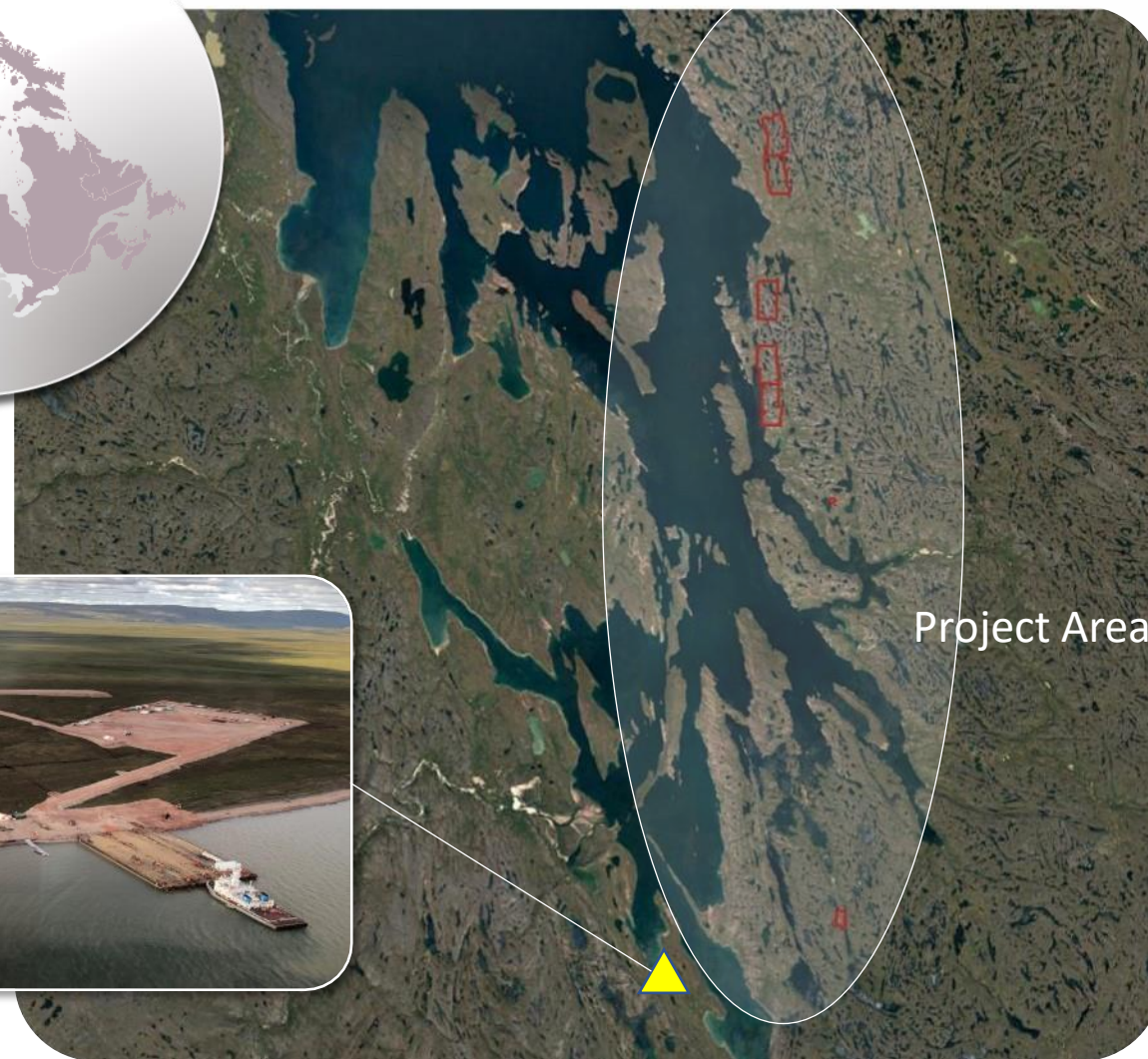
NWT TOO REMOTE? COMPARE TO JAMES BAY

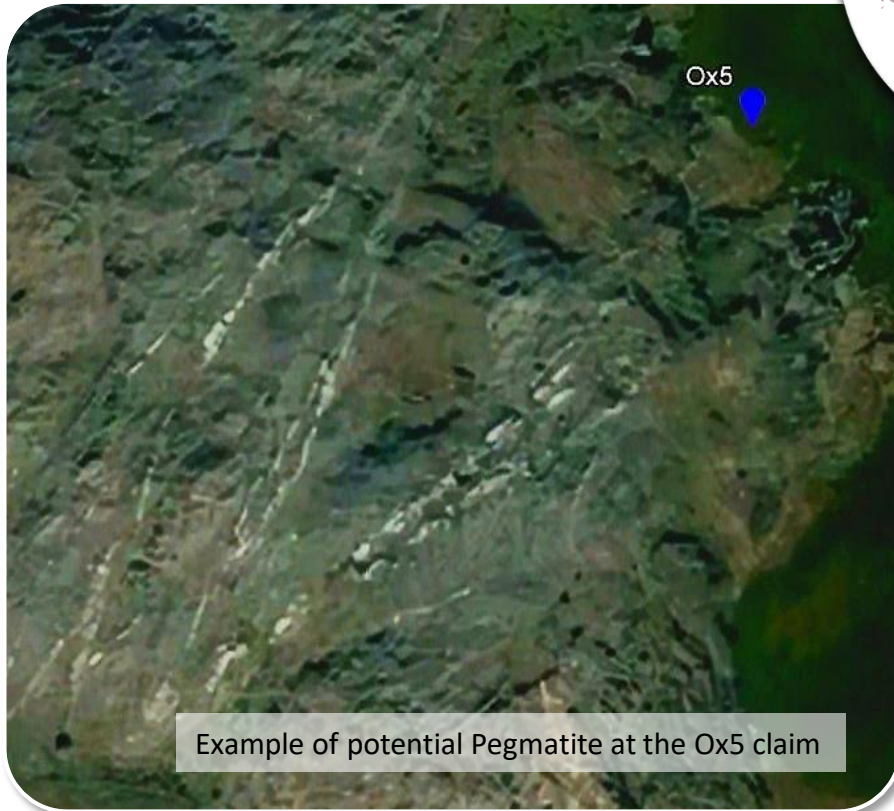
- Look at the NWT and Quebec James Bay - **same scale**.
- Proximity to the City of Yellowknife and full airport.
- Proximity to railhead from Hay River



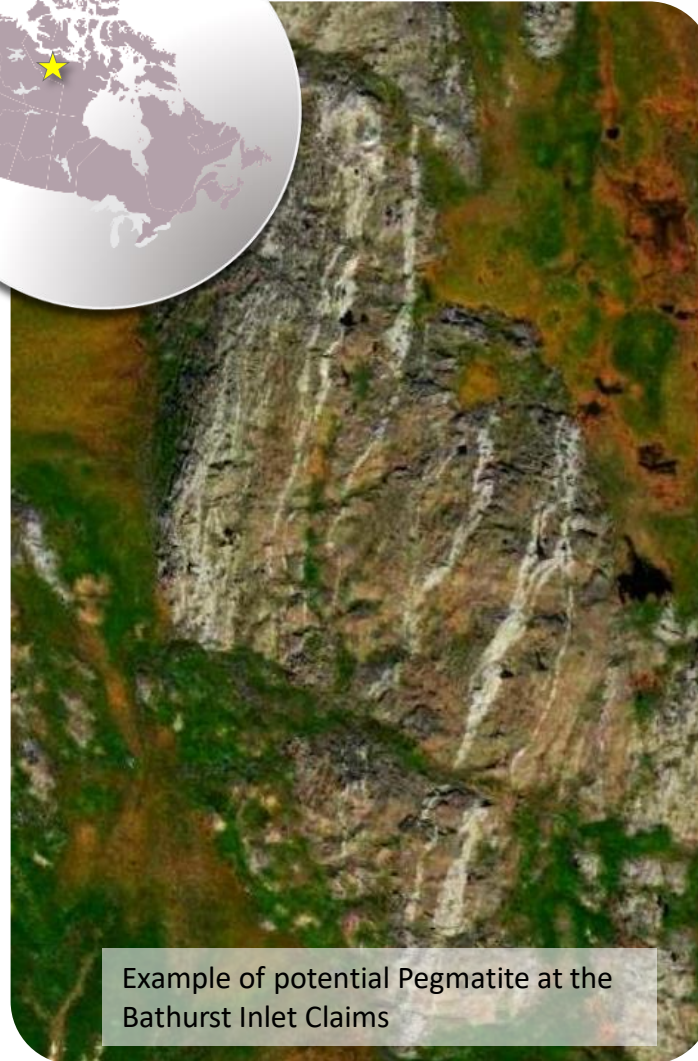
Map from Patriot Battery Metals NI 43-101 Technical Report Effective June 25, 2023

- Part of strategic alliance with Panarc to identify and acquire lithium pegmatite opportunities in the NWT and NU.
- Pegmatites have been known to occur in the Bathurst Inlet area for many decades.
- Yet to be assessed for spodumene and related lithium mineralization. **Program planned for summer 2024.**
- The southernmost mineral claim lies within 12 km of B2 Gold's port facility (formerly Sabina Gold and Silver).

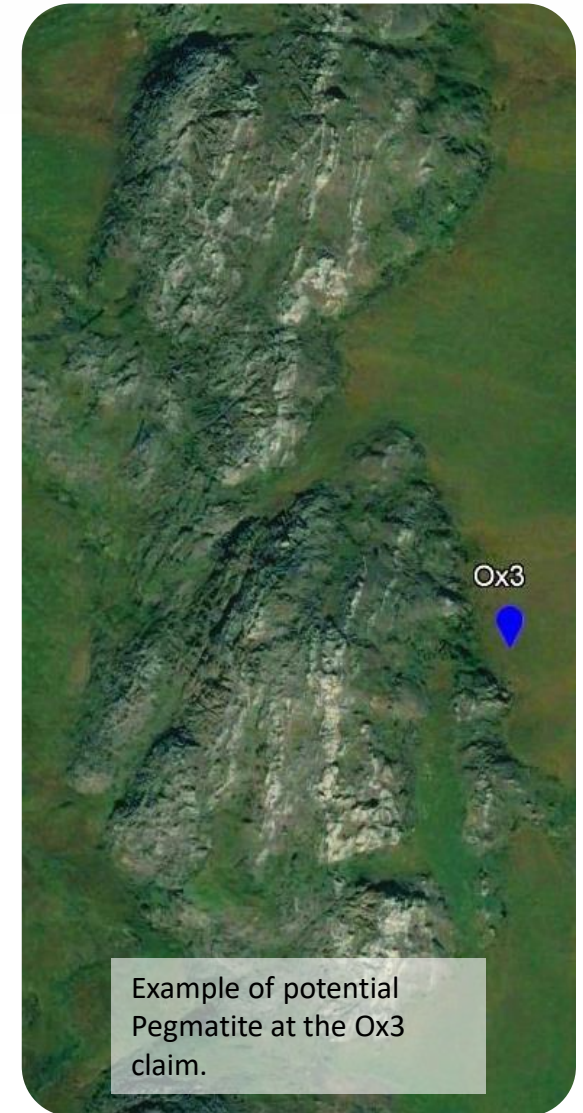




Example of potential Pegmatite at the Ox5 claim



Example of potential Pegmatite at the
Bathurst Inlet Claims

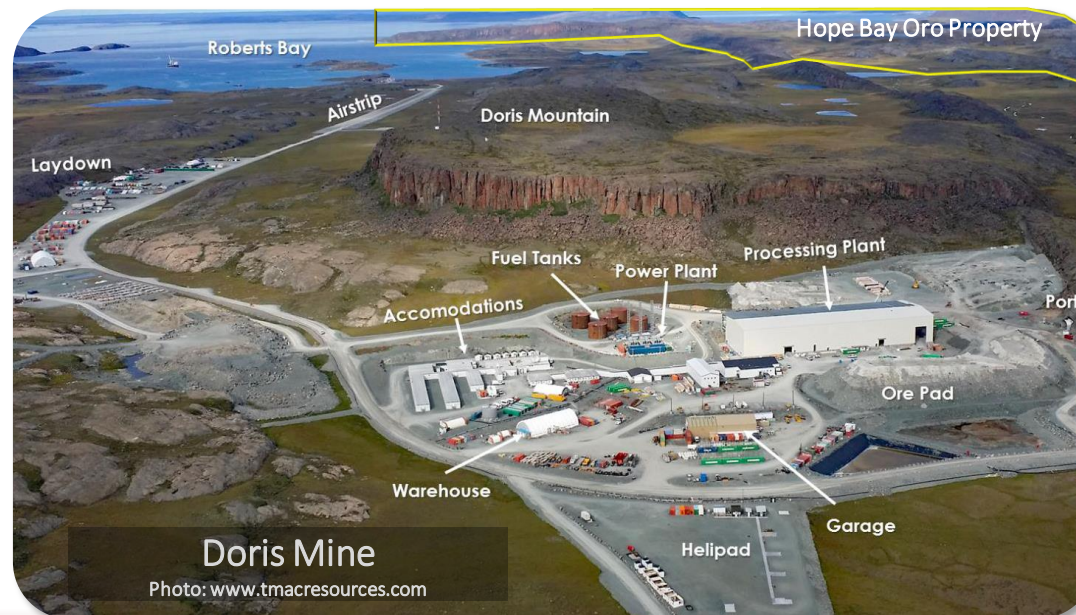


Example of potential
Pegmatite at the Ox3
claim.

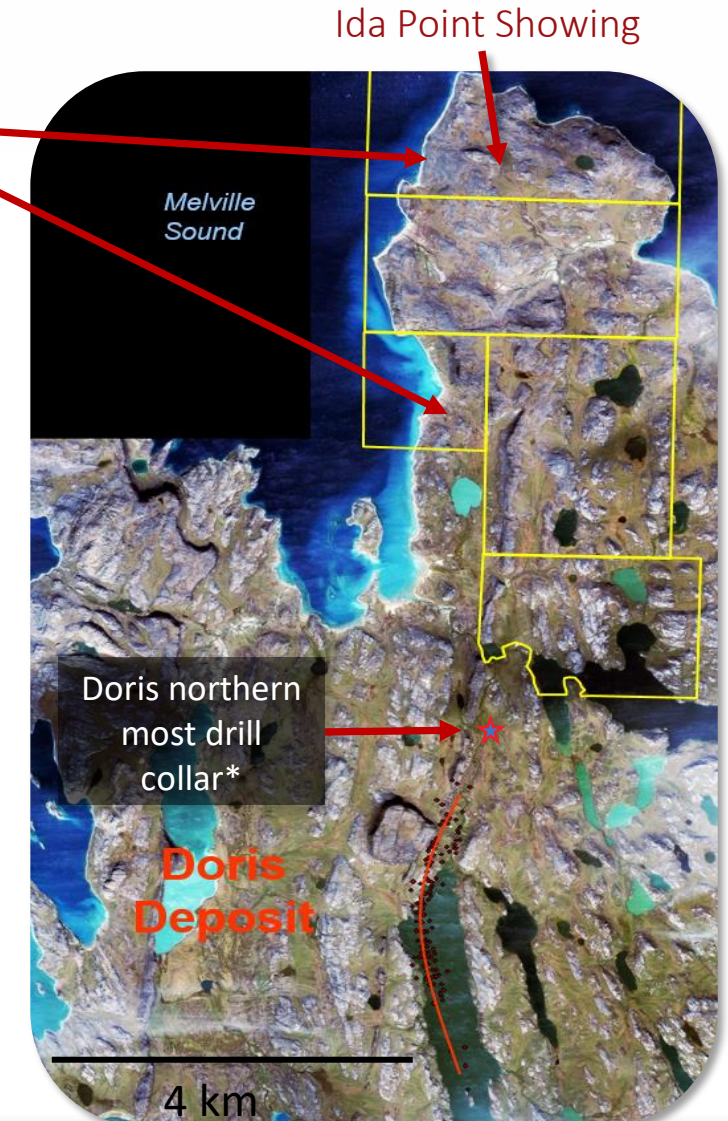
- Located ~3km north of Agnico Eagle's Doris Gold Mine.
- Host stratigraphy to the Doris deposit extends north onto ORO property.
- Multiple showings including **Ida Point** 5.48 g/t over 5.96 m; 8.0 g/t over 4.2m.

ORO vs Doris:

- ✓ **Same rocks**
- ✓ **Same structural setting**
- ✓ **Same mineralization style**



Hope Bay ORO Property





North Arrow

MINERALS INC.

Ken Armstrong
President & CEO

Nick Thomas
*Community and Investor
Relations Manager*

TSXV: NAR

Suite 960-789 West Pender Street
Vancouver, BC
Canada V6C 1H2
Tel: +1.604.668.8354
info@northarrowminerals.com
www.northarrowminerals.com