



**NORTH ARROW**  
MINERALS INC

Kraaipan Project  
A Botswana Greenstone  
Belt Exploration Opportunity

January 19, 2025





## FORWARD-LOOKING INFORMATION

This presentation contains projections and forward-looking information that involve various risks and uncertainties, including, without limitation, statements regarding the potential extent of mineralization, resources, reserves, exploration results and plans and objectives of North Arrow Minerals Inc. These risks and uncertainties include, but are not restricted to, the amount of geological data available, the uncertain reliability of drilling results and geophysical and geological data and the interpretation thereof and the need for adequate financing for future exploration and development efforts. There can be no assurance that such statements will prove to be accurate. Actual results and future events could differ materially from those anticipated in such statements. These and all subsequent written and oral forward-looking statements are based on the estimates and opinions of management on the dates they are made and are expressly qualified in their entirety by this notice. The Company assumes no obligation to update forward looking statements should circumstances or management's estimates or opinions change.

### **QUALIFIED PERSON UNDER NI 43-101**

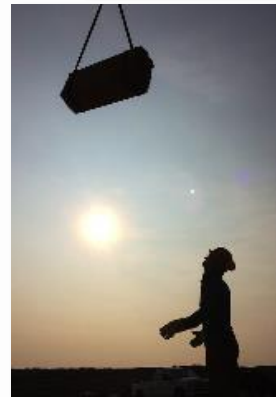
Disclosure of a scientific or technical nature related to North Arrow's projects in this presentation has been reviewed and approved by Ken Armstrong, P.Geo. President and CEO of North Arrow and a Qualified Person under NI 43-101.



**NORTH ARROW**  
MINERALS INC

WHO WE ARE

North Arrow is a Canadian company focused on the identification and evaluation of exploration opportunities.



NAR : TSXV



North Arrow's management and directors have a successful track record of resource discovery and development in Canada and Africa.







**Ken Armstrong** (President, CEO, Director, P.Geo. and Qualified Person under NI 43-101) 25+ years exploration & evaluation experience w/ Diavik, Aber, and others. Director & Past President NWT & Nunavut Chamber of Mines. Director Cornish Metals.

**Eira M. Thomas** (Chair) Extensive exploration and development experience in Canada and Botswana; Former officer &/or director Lucara, Suncor, Aber, Kaminak.

**Blair Murdoch** (Director) More than thirty years experience in senior management of private and public companies.

**Torrie Chartier** (Director) 25+ years of experience in northern mineral exploration and aviation industries.

**Allison Rippin Armstrong** (Advisor) 20+ years Canadian, African and other international CSR & ESG experience. *D. Grenville*

### **GREN THOMAS HAS RETIRED AS DIRECTOR OF NORTH ARROW**

Founder of Aber Resources, discoverer of the Diavik Diamond Mine; Canadian Mining Hall of Fame inductee.

### **WEALTH OF EXPERIENCE**



Ken Armstrong and Gren Thomas at the LDG Project NT



### Lithium – pending sale to LIFT:TSXV

**1** **LDG Lithium**  
**(100%)**  
*Spodumene lithium  
pegmatite showings*

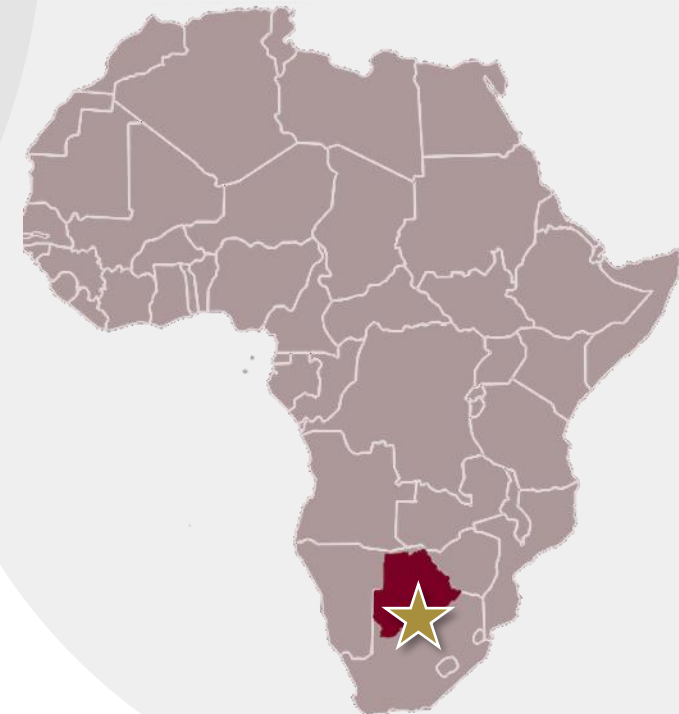
**2** **MacKay Lithium**  
**(100%)**  
*Spodumene lithium  
pegmatite showings*

**3** **DeStaffany**  
**(100%)**  
*Spodumene lithium  
pegmatite showings*



### Grassroots / Brownfields - Gold

**★ Kraaipan Gold Project, Botswana**  
**(earning up to 80%)**  
*>60 km of an underexplored and  
fertile Archean greenstone belt*



### Advanced Stage - Diamonds

**1** **Naujaat (60%)**  
*Significant diamond inventory;  
High-value fancy orange & yellow  
diamonds*

### Discovery Stage - Diamonds

**2** **Loki (100%)**  
*Kimberlite discovery - 2018*  
**3** **Pikoo (100%)**  
*Kimberlite discovery – 2016*



Option to earn up to an 80% interest in  
Kraaipan Greenstone Belt Property, southern Botswana  
**GOLD & BASE METAL OPPORTUNITY**

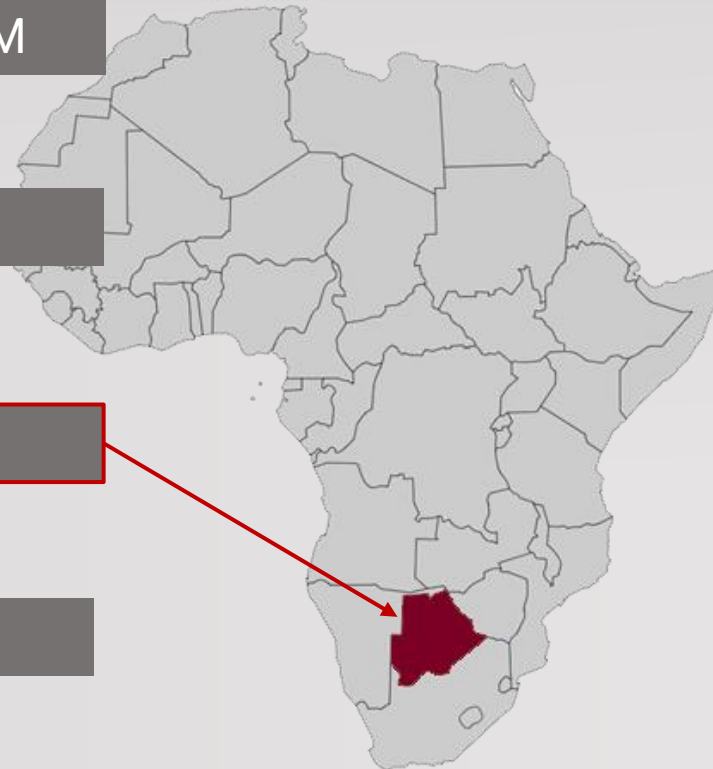
### **Greenstone Belt with Blue Sky Potential**

WORLD-CLASS EXPLORATION TEAM

with a DISCOVERY TRACK RECORD

BOTSWANA FOCUS

BELT-SCALE OPPORTUNITY



- Project generated by specialists in sub-Saharan exploration
- Deploying cutting-edge proprietary technologies to rapidly advance projects in this under-explored region
- Located in Africa's premier miner-friendly / investment jurisdiction
- **>60km of the highly prospective Kraaipan Greenstone Belt under licence** located on trend ~40km north of Harmony Gold's Kalgold multi-million ounce open-pit gold mine



FRASER  
INSTITUTE

## The 2022 Fraser Institute Rankings for **Botswana**

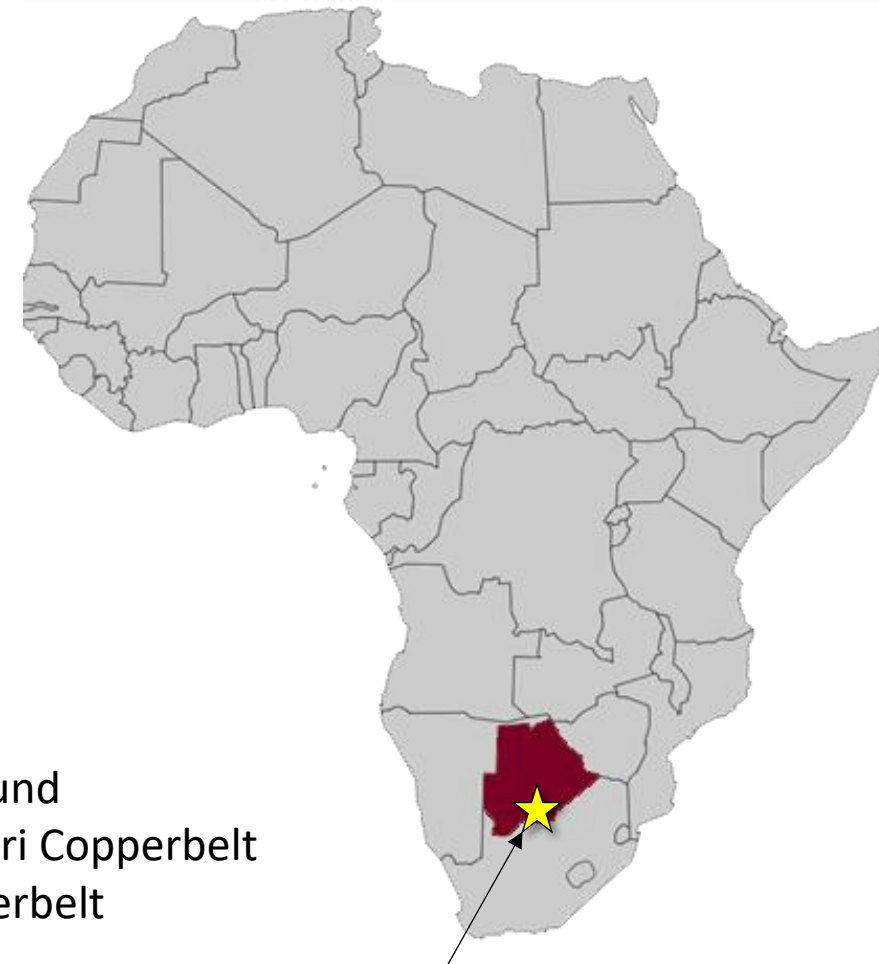
**2022 Global Policy Perception Index - Botswana ranked 2<sup>nd</sup>**  
**2022 Investment Attractiveness Index - Botswana ranked 10<sup>th</sup>**

Attractive jurisdiction for investment.

A long history of attracting and partnering with mid-tier and major mining companies to support and develop large mining projects.

### ***Recent development projects include:***

- 1. Lucara Diamonds:** mine expansion from open pit operations to underground
- 2. Khoemacau Copper Mining:** Cu-Ag mining development along the Kalahari Copperbelt
- 3. Sandfire Resources:** Cu-Ag mining development along the Kalahari Copperbelt



THE KRAAIPAN GREENSTONE PROJECT

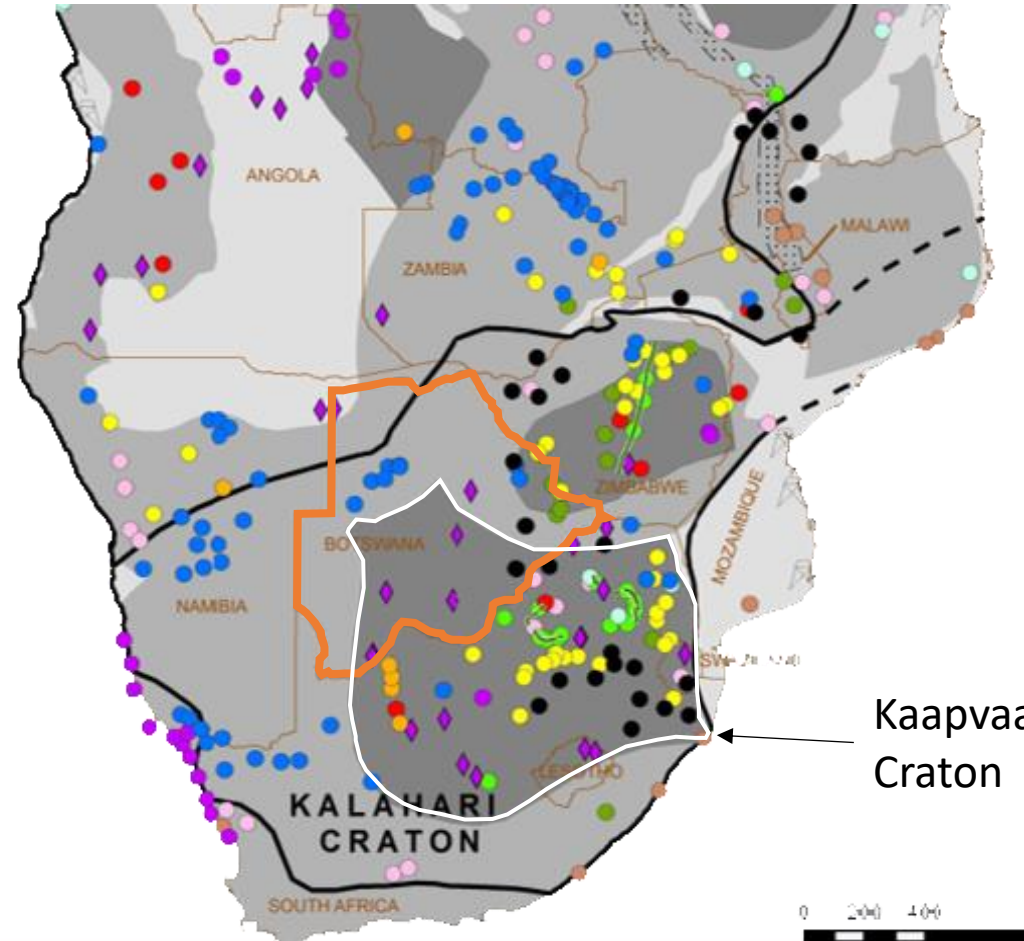




The Kaapvaal craton is a prolific locality for gold, PGE and base metal deposits in South Africa...

**Legend**

- International Boundaries \*
- East African Rift
- Mineral Deposits and Mines**
  - Coal
  - Copper, Cobalt, Lead, Zinc and Associated Minerals
  - Diamonds - Kimberlite
  - Diamonds - Marine and Alluvial
  - Gold and Associated Minerals
  - Heavy Mineral Sands
  - Industrial Minerals - Phosphate and Potash
  - Iron
  - Manganese
  - Nickel
  - Oil and Gas
  - Platinum Group and Associated Metals
  - Uranium, Tin and Rare Earth Elements
- Platinum-Chromite Zone
- Interpreted Suture Zone / Major Shear Zone
- Geological Framework**
  - Cratonic Nuclei
  - Orogenic Belt/Shield
  - Phanerozoic Cover Rocks



...But less so in Botswana

WHY?




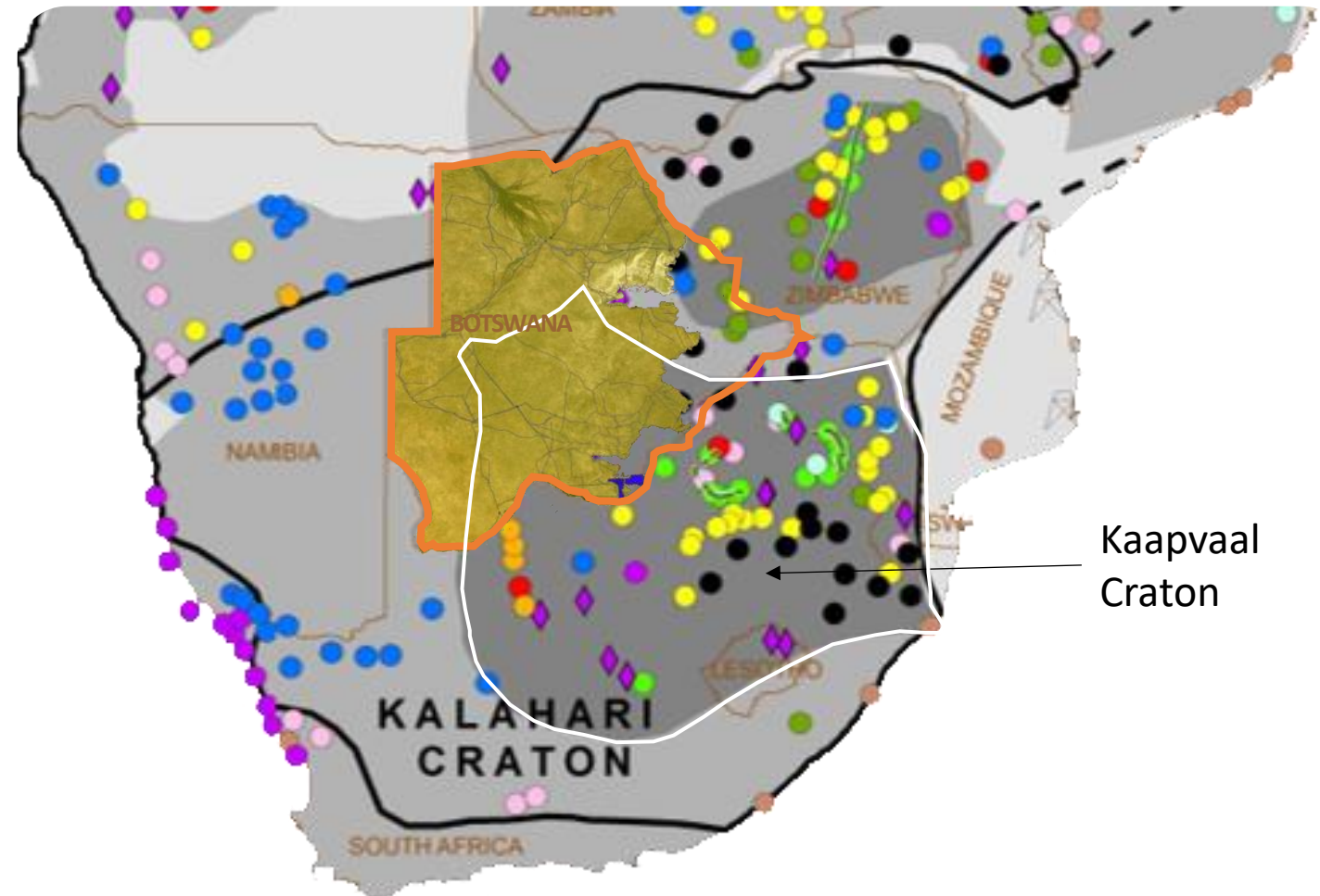


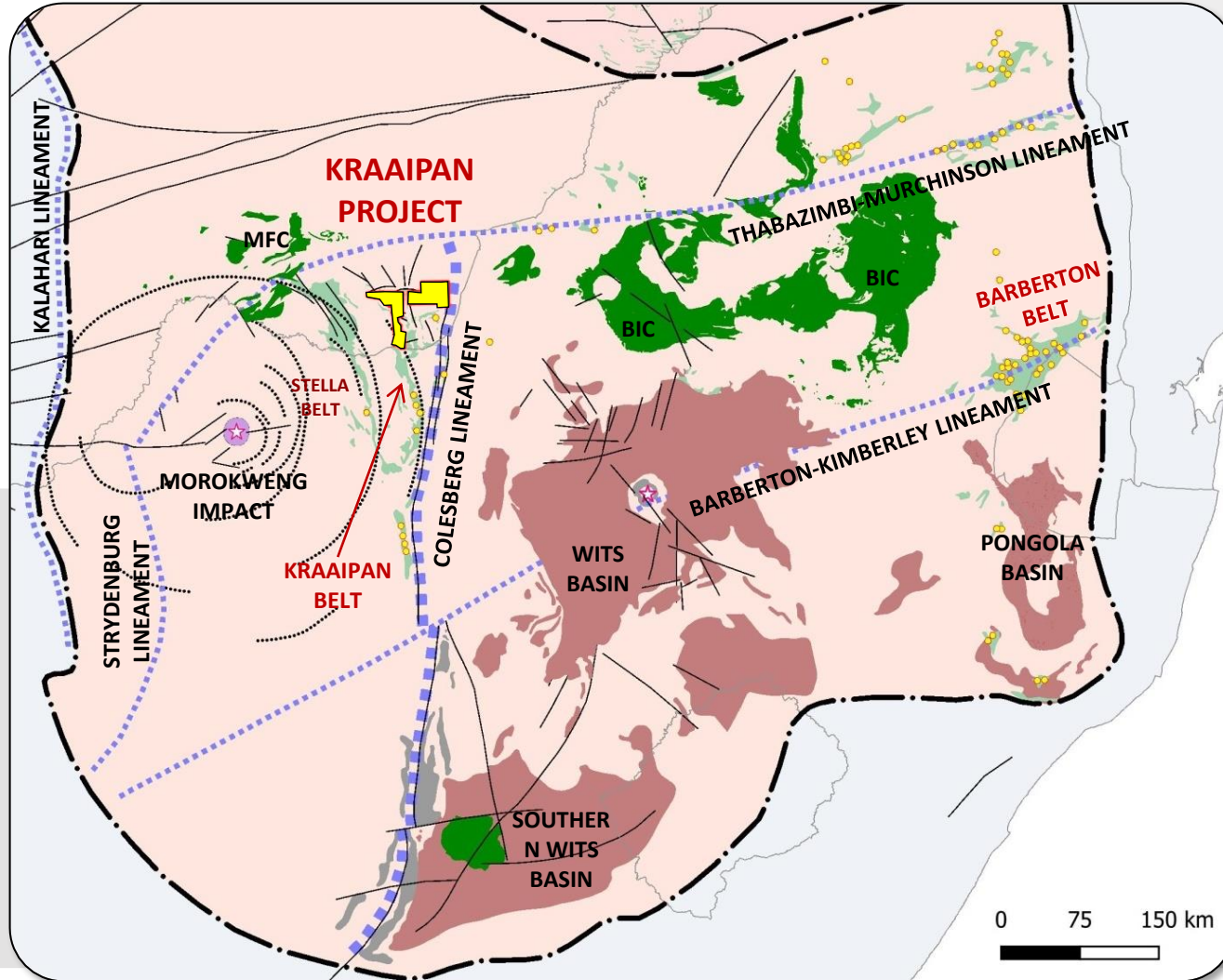
- Kalahari Desert sands cover >70% of Botswana - has hindered exploration of many prospective areas.
- South Africa is twice the size of Botswana but boasts **5 times as many mines**; despite very similar geological potential.

**South Africa has 552 mines  
Botswana has just 116 mines\***

*(\*from Africa Mining IQ Website)*

 Kalahari Sand Cover





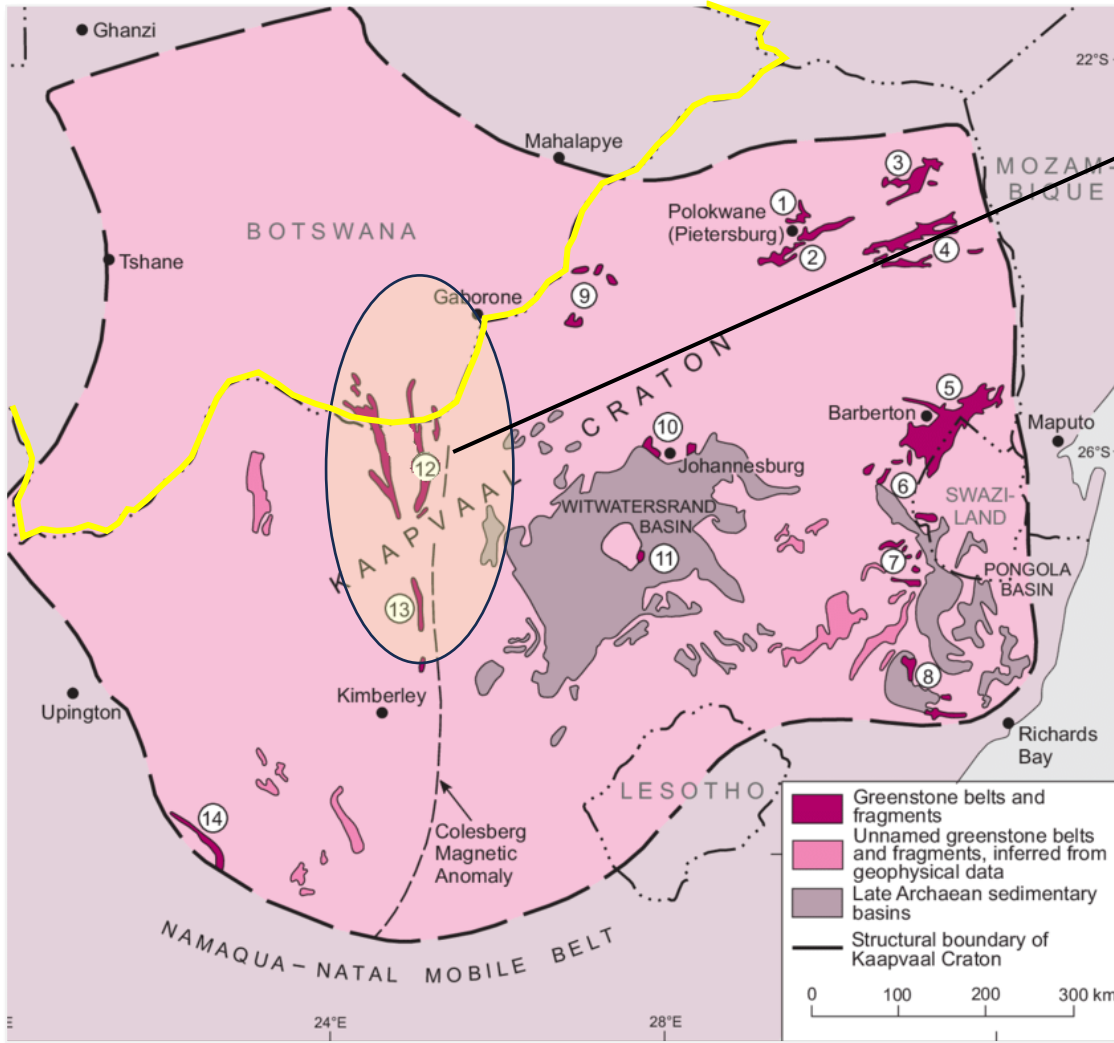
### THE COLESBURG LINEAMENT

- 3.1 to 2.9 Ga crustal-scale suture zone
- Formed when the Kimberley and Witwatersrand Terranes collided - the Colesberg Orogeny
- Proximity of **Kraaipan Project** to the Colesberg Lineament provides a compelling belt-scale exploration opportunity.
- Crustal scale structures are important indicators for Archean gold mineralization.





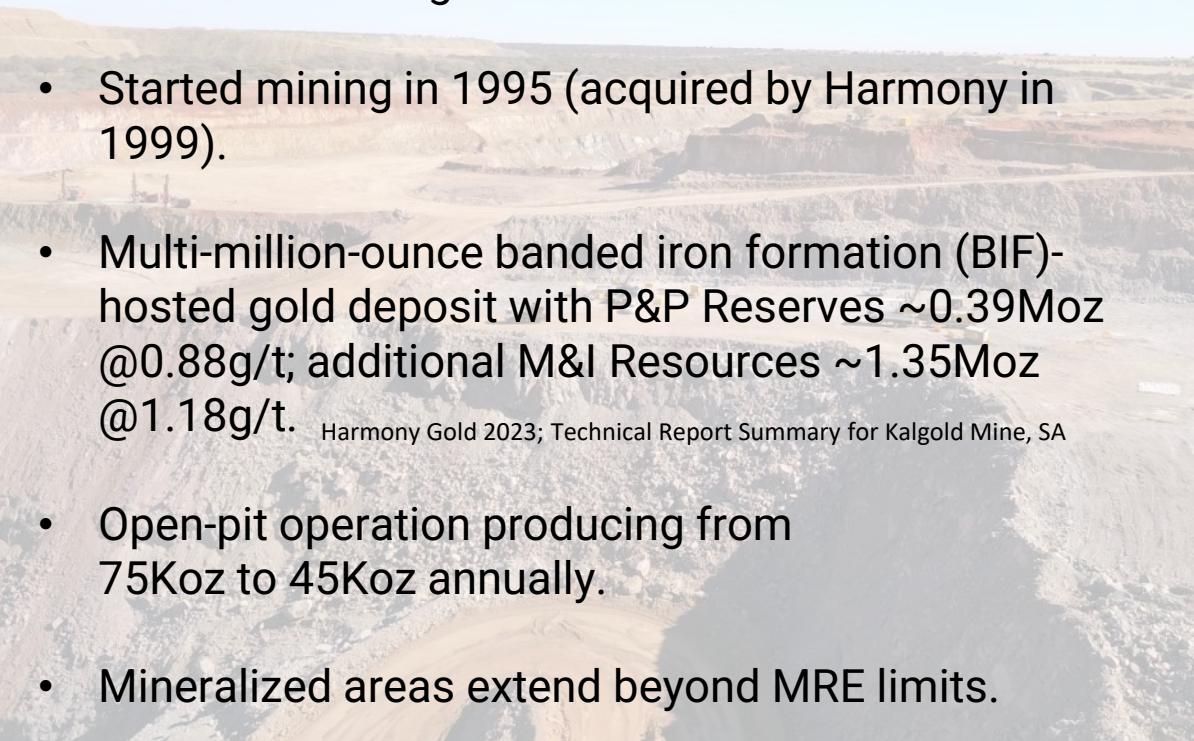
Figure credit: Carl Robert Anhaeusser, Ph.D and D.Sc. University of the Witwatersrand, Johannesburg



12

### KalGold Mine, South Africa Mining the *Kalahari Goldridge* Deposit

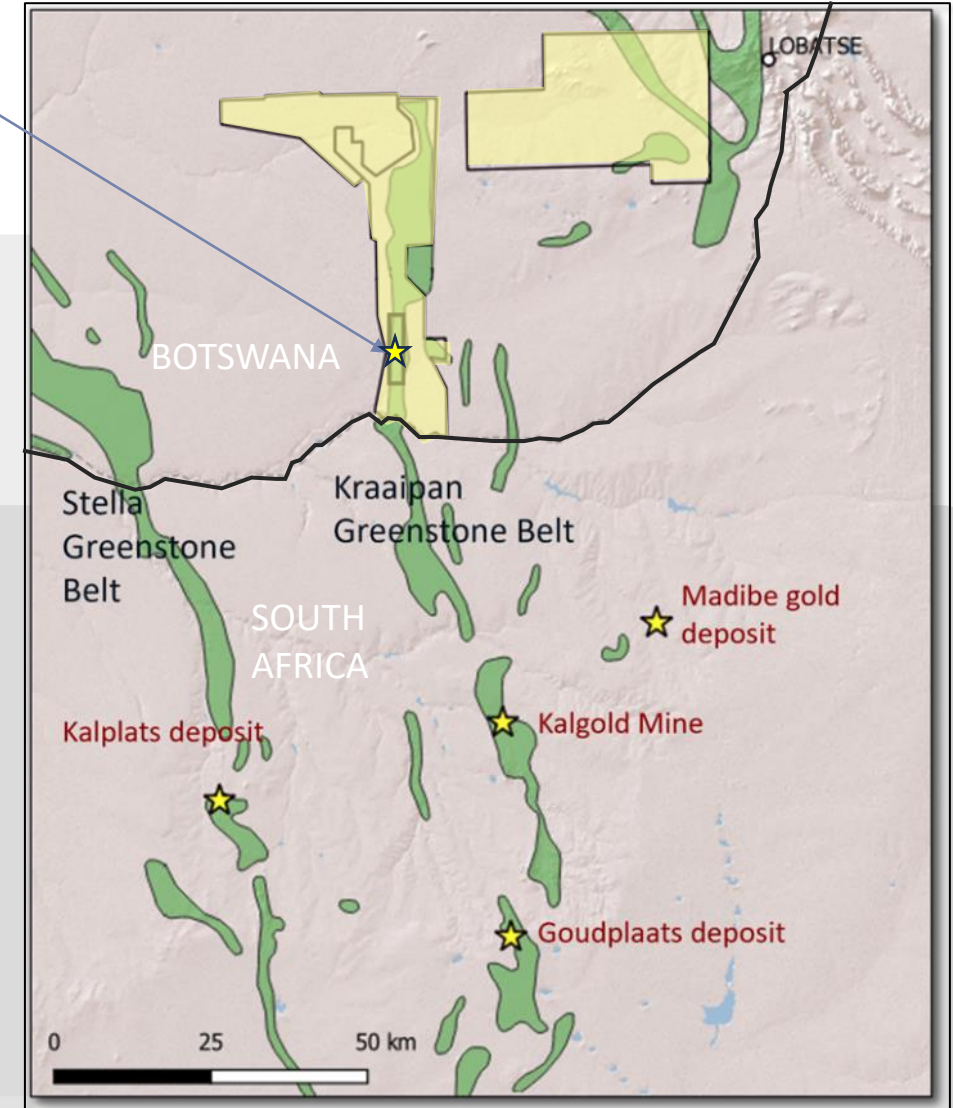
- Located 40 km south of the Kraaipan Project licenses, within the same greenstone belt.
- Started mining in 1995 (acquired by Harmony in 1999).
- Multi-million-ounce banded iron formation (BIF)-hosted gold deposit with P&P Reserves ~0.39Moz @0.88g/t; additional M&I Resources ~1.35Moz @1.18g/t. Harmony Gold 2023; Technical Report Summary for Kalgold Mine, SA
- Open-pit operation producing from 75Koz to 45Koz annually.
- Mineralized areas extend beyond MRE limits.



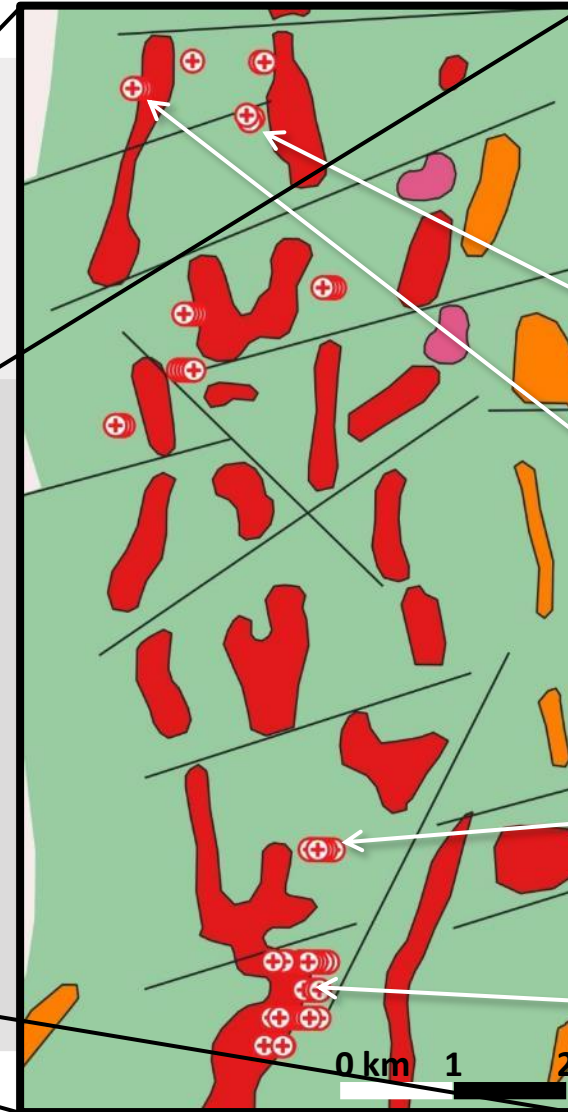
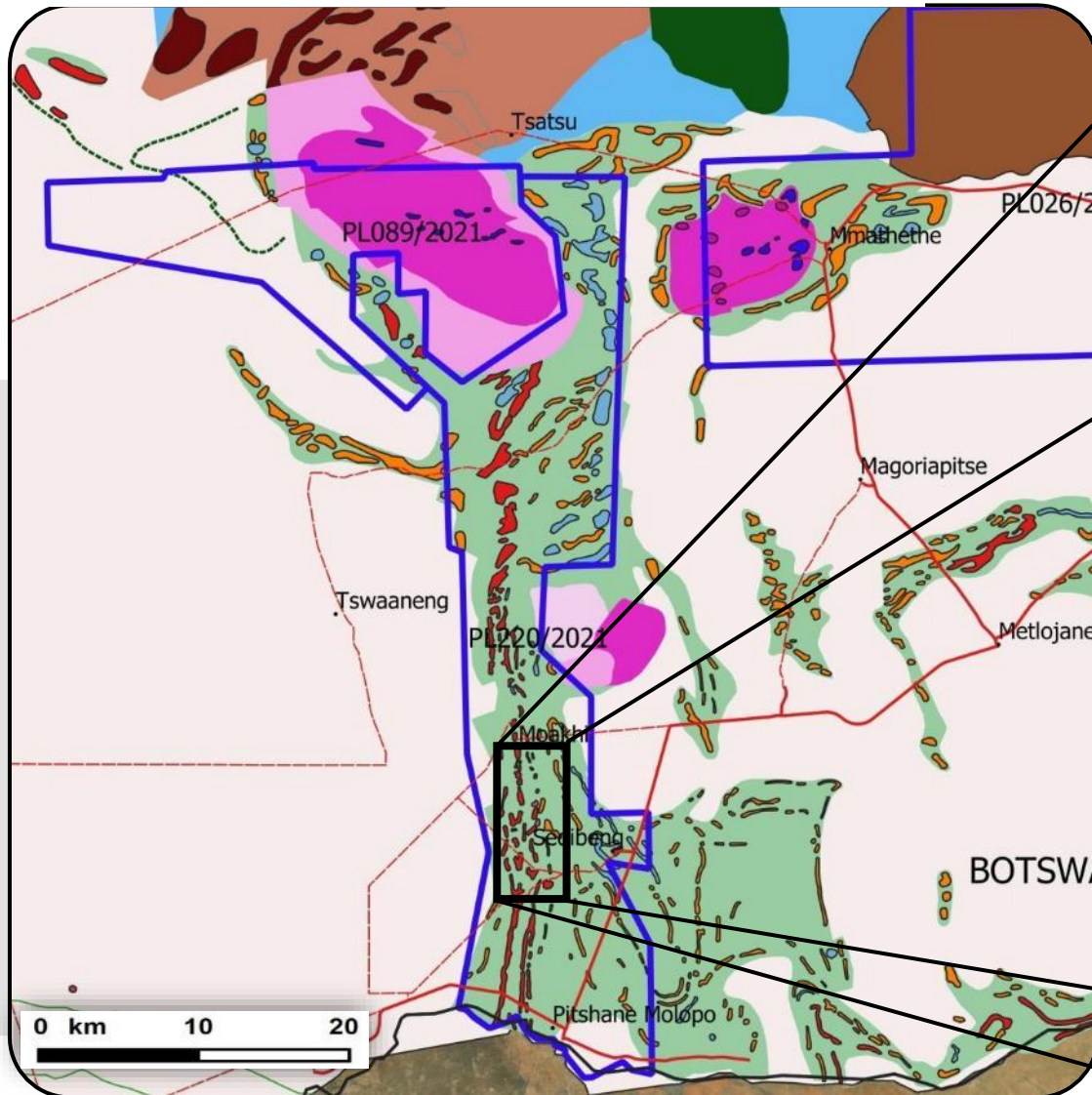


RAB drill results:  
13m @ 1.7 g/t Au  
21m @ 1 g/t Au  
3m @ 5.1 g/t Au

- ~1,266 km<sup>2</sup> mineral concession in southern Botswana covering **the entire ~60km northern extension of the Kraaipan Greenstone Belt (KGB)**;
- On trend from the multi-million-ounce Kalgold Mine, South Africa; other greenstone belt related deposits in the area.
- > 80% of the KGB in Botswana is covered by Kalahari sands - poor exposure = underexplored opportunity!
- A first-pass 3,800m Rotary Air Blast (RAB) drill program in the late-90's confirmed anomalous gold mineralisation over a 10 km strike length of outcropping & interpreted iron formation.







Outcropping BIFs  
1990's: Reunion Mining  
intersected high-interest  
gold mineralisation.

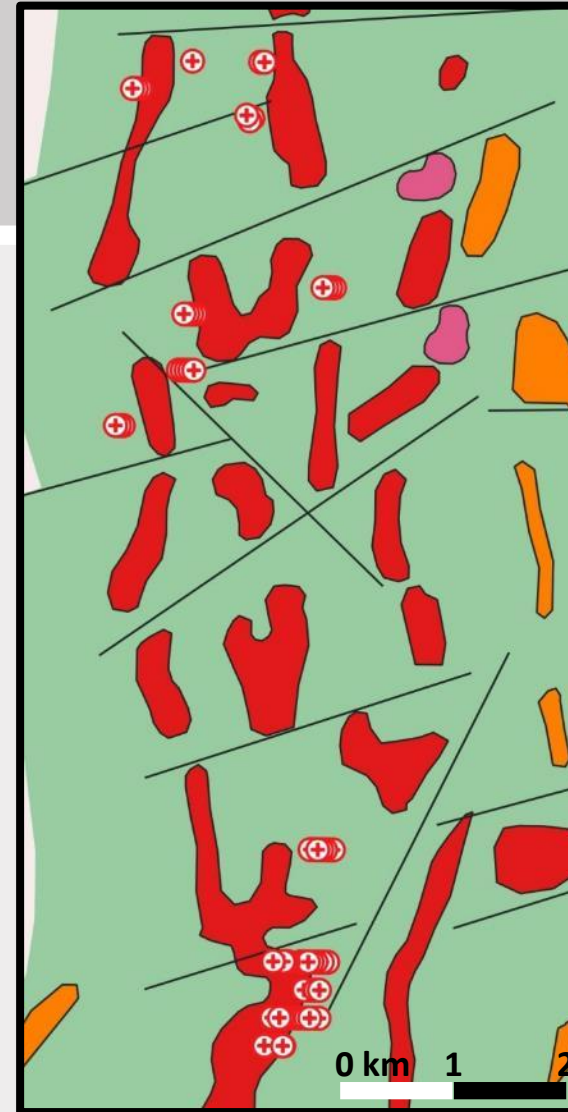
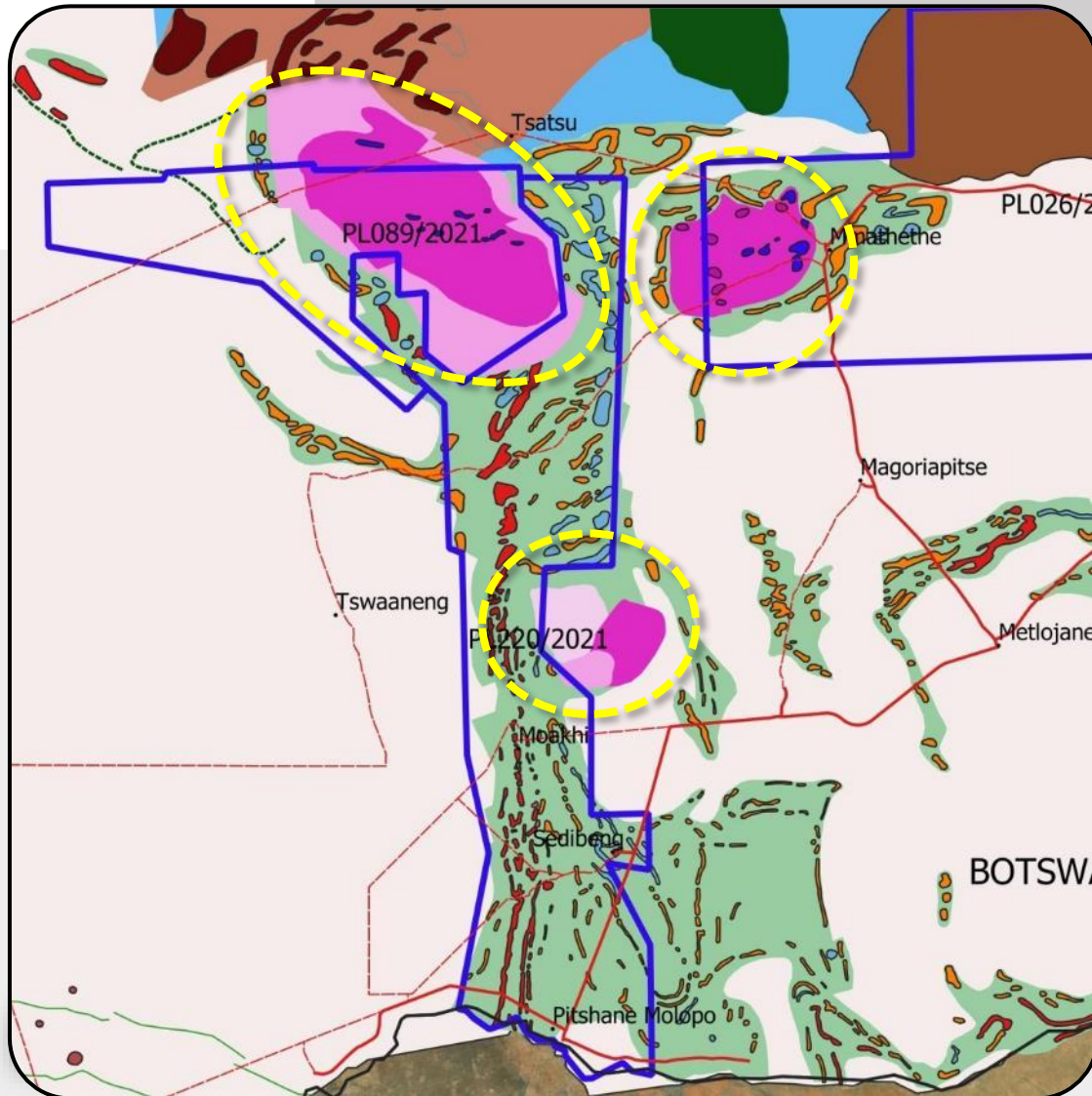
42m @ 0.6g/t  
Au incl. 21m @  
1g/t Au

9m @ 1.6g/t  
Au incl. 4m @  
2.3g/t Au

21m @ 1g/t  
Au incl. 5m @  
2.3g/t Au

13m @ 1.7g/t Au  
incl. 3m @ 5.1g/t  
Au

\* Interpreted geology map adapted from Corner, 2020.



### Prospective areas overlooked by past exploration:

- Covered BIFs – untested below Kalahari sands.
- **Major structures** – Key 2<sup>nd</sup> and 3<sup>rd</sup> order structures
- Intrusive bodies – contacts between the KGB and intrusive bodies (yellow circles)
- Ni- Cu-PGE potential in northern area of the project





*In-house proprietary technologies to provide a first-time exploratory window into high potential, sand covered areas of Kraaipan Greenstone Belt*

**Remote Mapper UAV** – High resolution geophysical data



**Proprietary Drilling Services** – Truck mounted RC drill, project-wide drivability, and all-season working conditions. Focus on collecting geochemical samples at the base of the Kalahari and testing priority structural bedrock targets.



**In-House Sample Processing** – No line-up; quick turnaround for RC drill intersections.



**Deep Machine Learning** – proven technology for using success as a springboard for more. Once deposit defining criteria are understood DML can be applied (Ekati example).





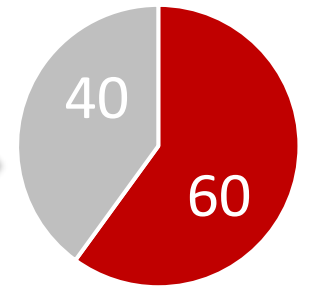
**The 1<sup>st</sup> Option Agreement**

North Arrow can earn a 60% interest by incurring US\$5M in exploration expenditures over 3 years:

- i. US\$1M in exploration expenditures by June 30, 2025 (firm commitment);
- ii. An additional US\$2M in expenditures by June 30, 2026
- iii. An additional US\$2M in expenditures by June 30, 2027.

Upon Notification of Exercise, NAR will issue 1,000,000 shares to Rockman to vest its 60% interest

First Option – NAR 60%



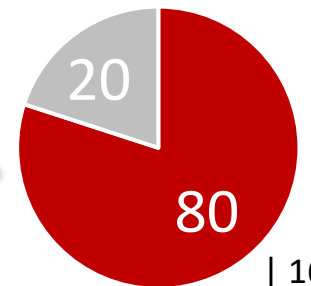
Rockman option to continue the Project as a 40/60 JV or...  
*Grant NAR the option to earn an additional 20% - the PEA Option*

**The PEA Option**

NAR can earn an additional 20% interest by completing a Preliminary Economic Assessment (“PEA”) of the project

Upon delivery of the PEA, NAR will issue 2,000,000 in shares to Rockman to vest its additional 20%

PEA Option – NAR 80%







### High-resolution magnetic surveys (Ongoing)

- Complete high-resolution (25 m line-spacing) magnetic surveys of project area using combination of the Remote Mapper fixed wing drone and ground surveys
- **>905 line-kms completed to date**

### Detailed structural mapping, interpretation & target generation (January-March)

- Based on high-resolution magnetic data & field follow-up including detailed structural mapping and interpretation
- Update geological mapping and definition of prospective regions to identify & prioritise targets for drilling & sampling

### Drill test compelling Banded Iron Formation (BIF) & structural gold targets (April-June)

- **Build on 24 RC drill holes completed in 2024 testing bedrock and basal Kalahari sands in a new target area.**
- Focus on areas with ~10 to 40 m of Kalahari cover
- Test prioritized targets with overburden reverse-circulation drilling (**~150 to 200 drillholes**)
- Sampling the “base of Kalahari” and upper bedrock intersections for Au & pathfinder elements by multi-element geochemistry

### Core drilling (H2 2025)

- Target key prospective targets to constrain geology and mineralization
- Program design based on results from overburden drilling and soil sampling



0.82 ct rough

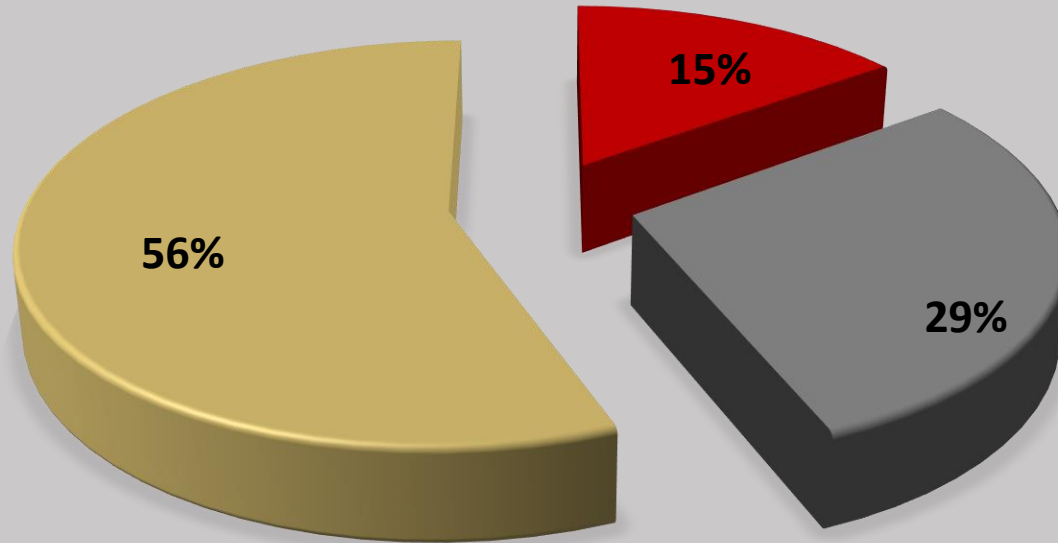


0.57 ct rough



- ✓ **Jurisdiction** → Clear permitting path in Nunavut
- ✓ **Near tide water** → Freight costs 50% of NWT diamond mines
- ✓ **Large tonnage** → ~48 Mt down to 205m below surface
- ✓ **Low strip ratio** → <3:1 vs >10:1 for NWT diamond mines
- ✓ **Significant diamond inventory\*** → ~26M contained carats
- ✓ **Blue sky potential** → Q1-4 at depth; 15 additional kimberlites





■ Management and Directors   ■ Key Shareholders   ■ Float

**POST FINANCING SHARE STRUCTURE**

<b>Issued and Outstanding</b>	<b>28,580,224</b>
Options	2,170,000
Warrants	8,867,887*
<b>Fully Diluted</b>	<b>39,618,101</b>

\*3.00 M at ~\$1.00-1.20 expire May 2025.  
Includes ~5.85M at \$0.30 expiring April 2026



- ❖ A highly experienced management and geological team with a long history of **mine-finding experience** in Canada and Africa
- ❖ **Kraaipan Greenstone belt** – unique exploration opportunity in Botswana with Rockman Resources
- ❖ Can earn **60% by investing US\$5M over three years**
- ❖ Can earn **80% by carrying Rockman to a PEA**
- ❖ **Rockman** – strong technical and practical team with in-country experience including access to cost effective exploration solutions using deep machine learning, drone geophysics and portable drilling technology







- ❖ Additional Canadian exploration upside
- ❖ Closing the sale of three spodumene-bearing pegmatite lithium properties to Li-FT Power
- ❖ Legacy diamond projects in NWT, Nunavut and Saskatchewan
- ❖ Including 60% interest in Naujaat project – host to unique, high value fancy orange yellow diamonds





**Ken Armstrong**  
*President & CEO*

**Eira Thomas**  
*Executive Chair*

Tel: +1.604.668.8355  
[info@northarrowminerals.com](mailto:info@northarrowminerals.com)  
[www.northarrowminerals.com](http://www.northarrowminerals.com)

**Nick Thomas**  
*Community and Investor  
Relations Manager*



**NORTH ARROW**  
MINERALS INC

**ROCKMAN**  
— RESOURCES LTD —