

NAR: TSXV



NORTH ARROW
MINERALS INC

Kraaipan Gold Project Update

A Botswana Greenstone Belt
Exploration Opportunity

April 21, 2026



FORWARD-LOOKING INFORMATION

This presentation contains projections and forward-looking information that involve various risks and uncertainties, including, without limitation, statements regarding the potential extent of mineralization, resources, reserves, exploration results and plans and objectives of North Arrow Minerals Inc. These risks and uncertainties include, but are not restricted to, the amount of geological data available, the uncertain reliability of drilling results and geophysical and geological data and the interpretation thereof and the need for adequate financing for future exploration and development efforts. There can be no assurance that such statements will prove to be accurate. Actual results and future events could differ materially from those anticipated in such statements. These and all subsequent written and oral forward-looking statements are based on the estimates and opinions of management on the dates they are made and are expressly qualified in their entirety by this notice. The Company assumes no obligation to update forward looking statements should circumstances or management's estimates or opinions change.

QUALIFIED PERSON UNDER NI 43-101

Disclosure of a scientific or technical nature related to North Arrow's projects in this presentation has been reviewed and approved by John Armstrong, President and COO for North Arrow and a Qualified Person under NI 43-101.



WHY INVEST

- ✓ **PROVEN TEAM** – Well-renowned team with a history of value creation for shareholders in the gold and diamond sectors (Eira Thomas, John Armstrong, Ken Armstrong);
- ✓ **KEY SHAREHOLDERS** – 29% ; incl Ross Beaty (5%), Rick Rule (4.5%), Management / Directors (14%);
- ✓ **SHARE STRUCTURE** – 46.0 million shares outstanding; **big, per-share, upside potential with discovery;**
- ✓ **OPPORTUNITY** – 60 km strike length of underexplored greenstone belt within Botswana; **proven gold endowment** south of Botswana's border - Harmony's Kalgold Mine; **year-round exploration;**
- ✓ **STRATEGIC PARTNERSHIPS** – In-country expertise through **Rockman / Mineral Services;** cutting edge exploration technology developed specifically for the Kalahari terrain.





Eira Thomas | CEO



Extensive exploration and development experience in Canada and Botswana; former officer &/or director Lucara, Suncor, Aber, Kaminak; **15 yrs experience in Botswana**

John Armstrong | President and COO



+30 years experience in mining, mineral exploration & government. VP Resources & VP Tech Services Lucara; **10 yrs experience in Botswana.**

Kaeli Gattens | VP Communications



15 years of leadership experience in corp communications, capital markets, & public affairs in global mining; **2.5 yrs experience in Botswana**

Ken Armstrong | Chairman



25+ years exploration & evaluation experience w/ Diavik, Aber, & others. Past President NWT & NU Chamber of Mines. Director Cornish Metals.

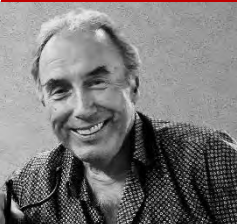


Torrie Chartier | Director



25+ years of experience in northern mineral exploration and aviation industries

Blair Murdoch | Director



+30 years of experience in senior management of private and public companies.

Nick Thomas | Manager Investor Relations



20+ years experience in Canadian mineral exploration and corporate communications.

Allison Rippin Armstrong | Advisor



20+ years Canadian, African and other international CSR & ESG experience.



Option to earn up to an 80% interest in
Kraaipan Greenstone Belt Property, southern Botswana
GOLD & BASE METAL OPPORTUNITY

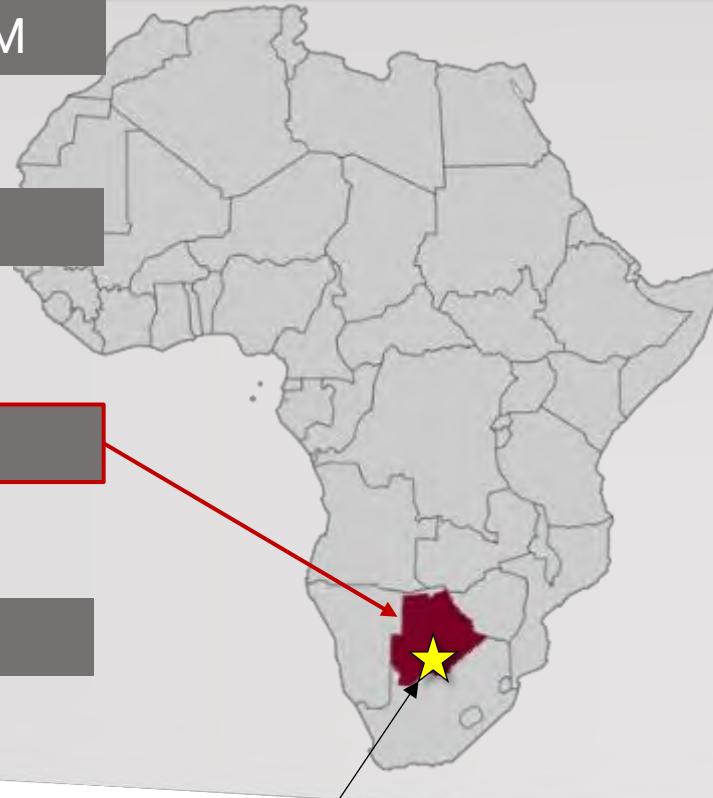
**Greenstone Belt with
Blue Sky Potential**

WORLD-CLASS EXPLORATION TEAM

with a DISCOVERY TRACK RECORD

BOTSWANA FOCUS

BELT-SCALE OPPORTUNITY

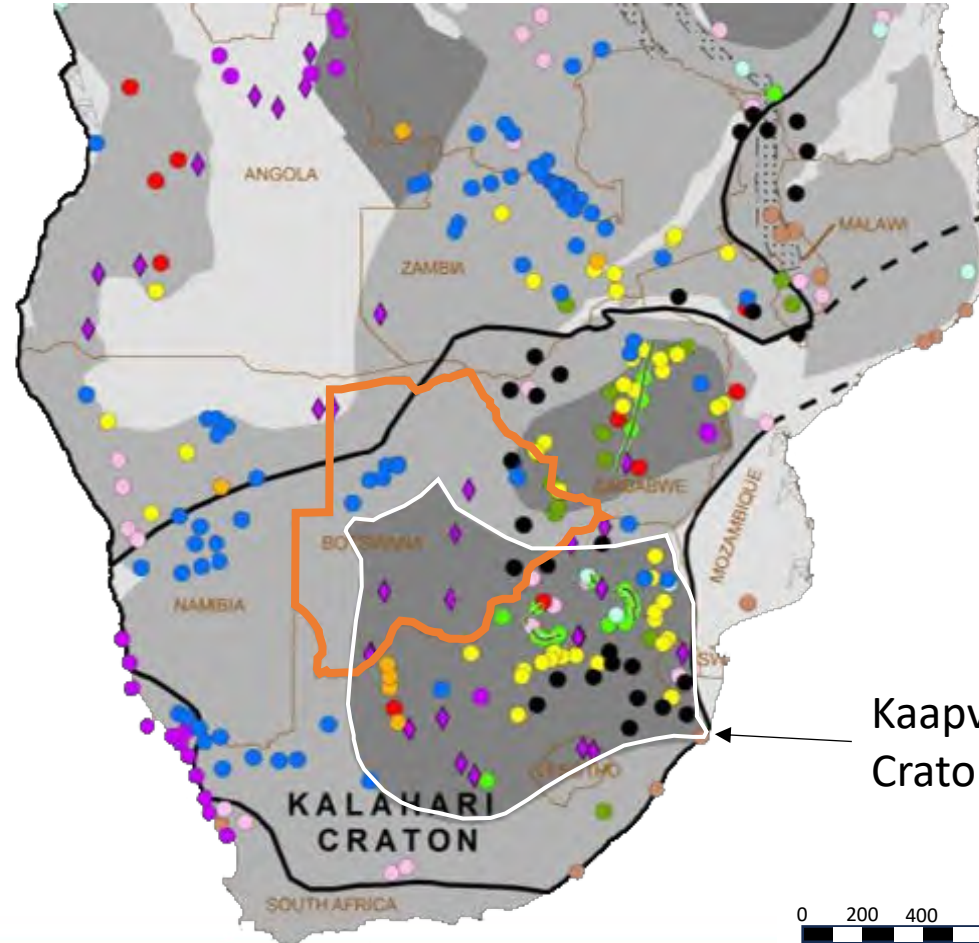
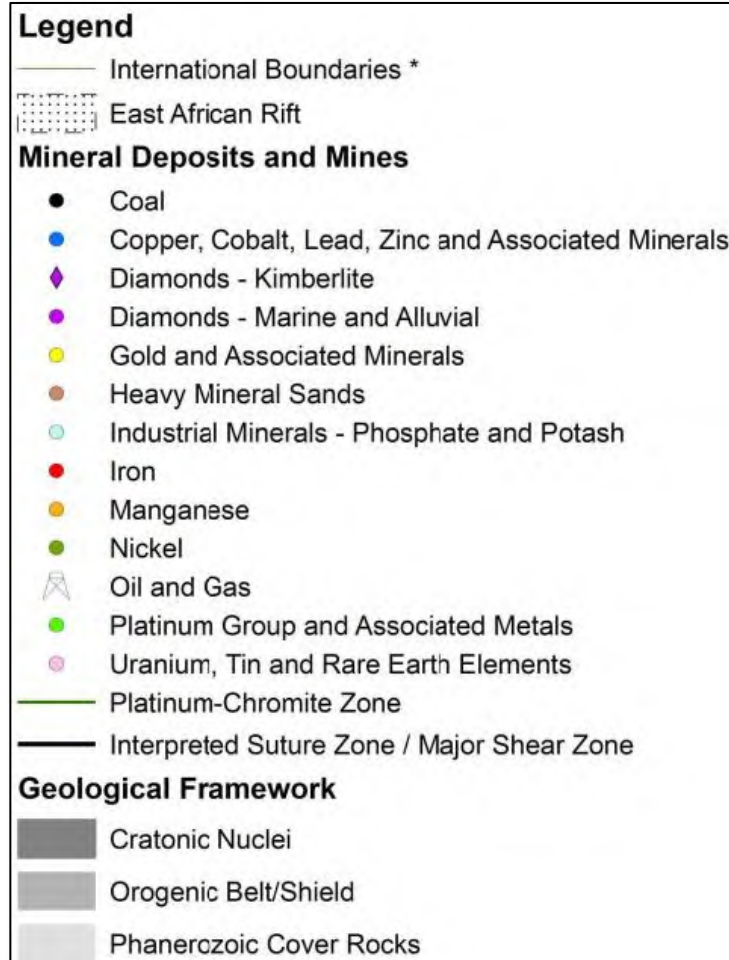


KRAAIPAN GOLD PROJECT

- Project generated by specialists in sub-Saharan exploration
- Deploying cutting-edge proprietary technologies to rapidly advance projects in this under-explored region
- Located in Africa's premier miner-friendly / investment jurisdiction
- **>60km of the highly prospective Kraaipan Greenstone Belt under licence** located on trend ~40km north of Harmony Gold's Kalgold multi-million ounce open-pit gold mine



The Kaapvaal craton is a prolific locality for gold, PGE and base metal deposits in South Africa...



...But less so in Botswana

WHY?


Kaapvaal Craton



- Kalahari Desert sands cover >70% of Botswana - has hindered exploration of many prospective areas.
- South Africa is twice the size of Botswana but boasts **5 times as many mines**; despite very similar geological potential.

**South Africa has 552 mines
Botswana has just 116 mines***

*(*from Africa Mining IQ Website)*

 Kalahari Sand Cover

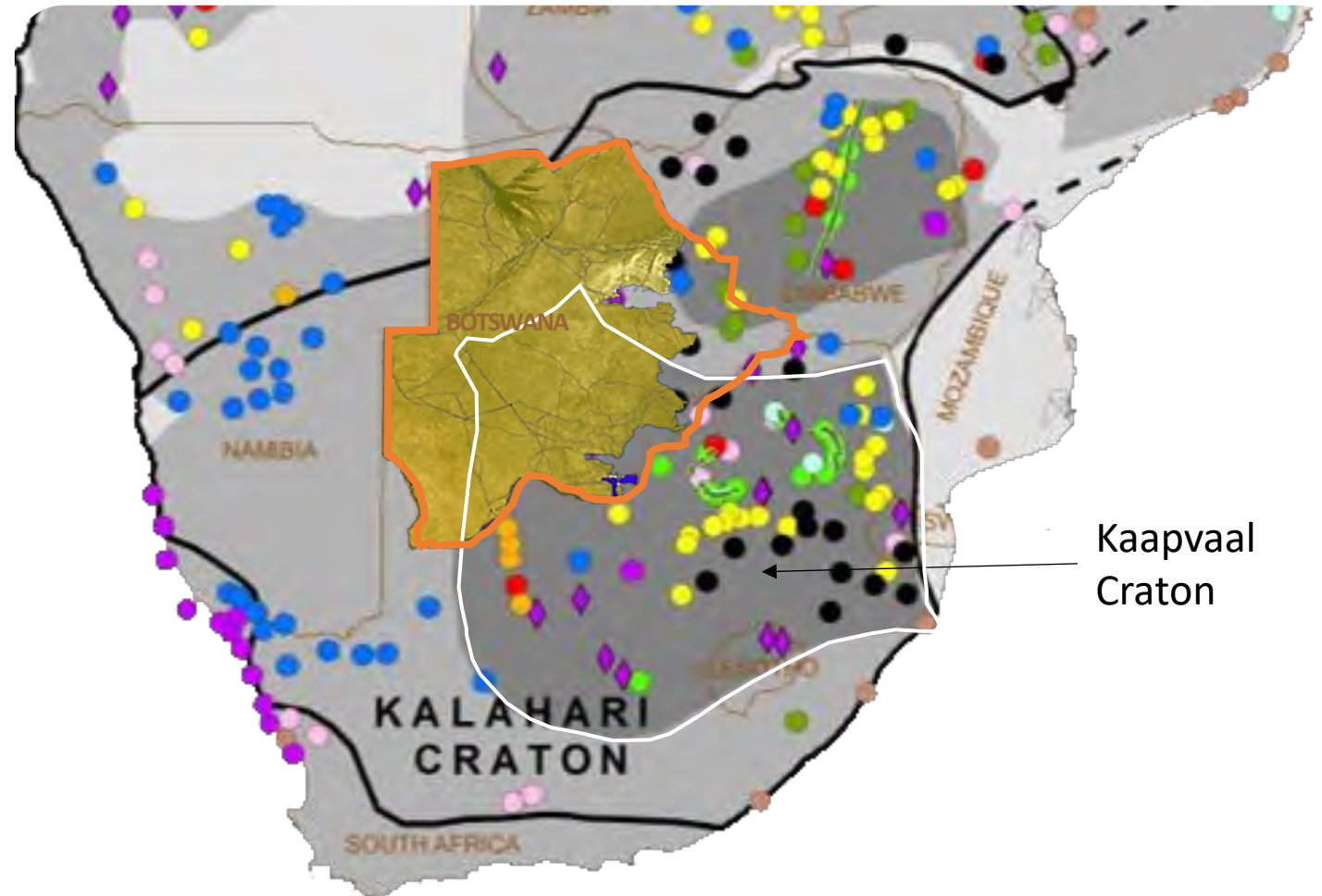
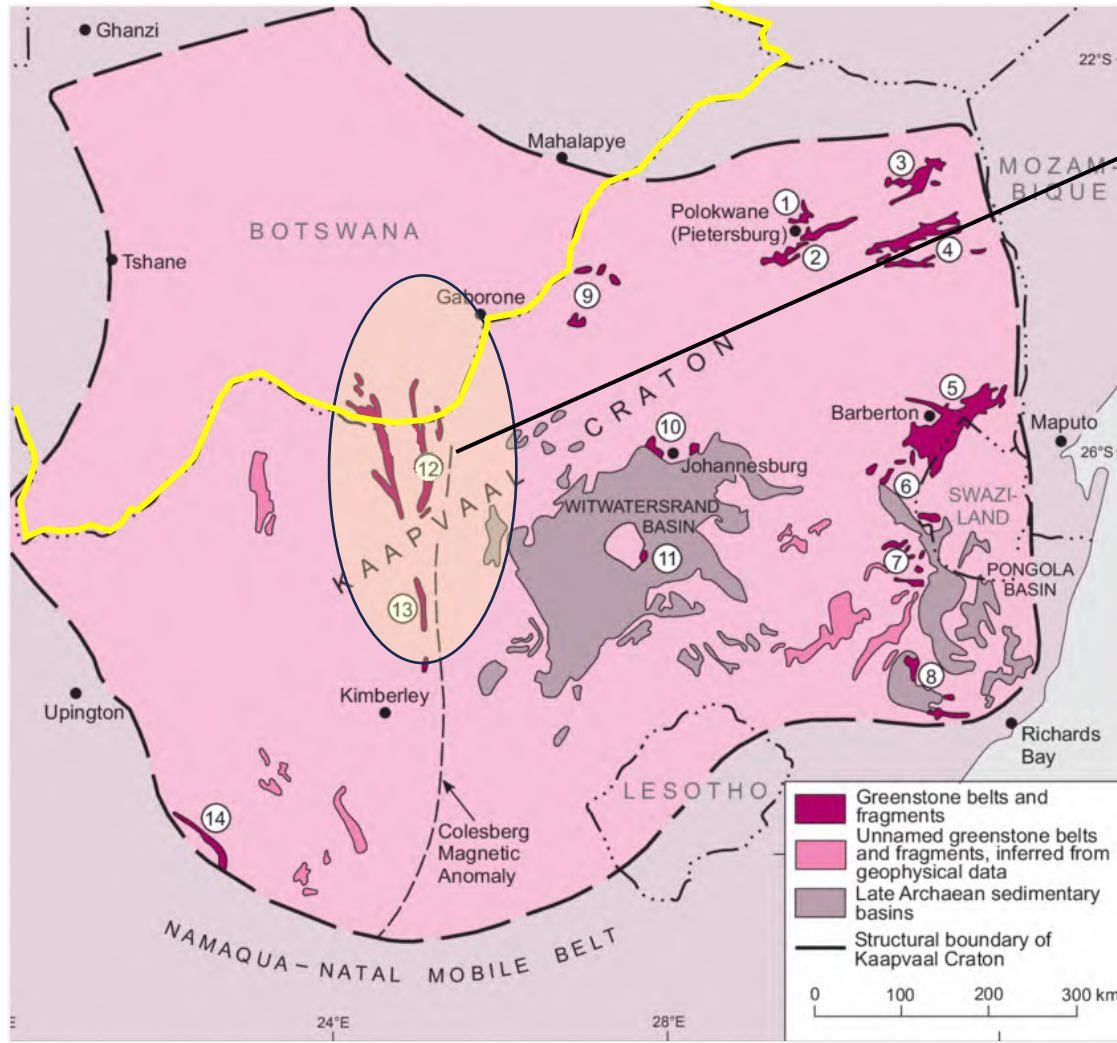




Figure credit: Carl Robert Anhaeusser, Ph.D and D.Sc. University of the Witwatersrand, Johannesburg



12

KalGold Mine, South Africa Mining the *Kalahari Goldridge* Deposit

- Located 40 km south of the Kraaipan Project licenses, within the same greenstone belt.
- Started mining in 1995 (acquired by Harmony in 1999).
- Harmony Gold’s Mineral Resources and Mineral Reserves, June 2025
 - **P&P Reserves:** 0.618 Moz @ 1.03 g/t Au
 - **M&I Resources:** 2.2 Moz @ 0.93 g/t Au
 - **2025 Production:** 39,738 oz at 0.84 g/t
 - **Average annual production (25 years):** 52,597 oz
 - **Cut-off Grade :** 0.58 g/tonne
- Total production plus current resources = **>3.5 million ounces.**
- Mineralized areas extend beyond Mineral Resource Limits.

Distribution of the various greenstone belts and fragments on the Kaapvaal Craton. 1. Rhenosterkoppies; 2. Pietersburg; 3. Giyani (Sutherland); 4. Murchison; 5. Barberton; 6. Weergevonden, Schapenburg; 7. Assegaai, De Kraalen, Comondale; 8. Nondweni-Ilangwe; 9. Makoppa Dome; 10. Johannesburg Dome; 11. Vredefort Dome; 12. Kraaipan; 13. Amalia and 14. Marydale.

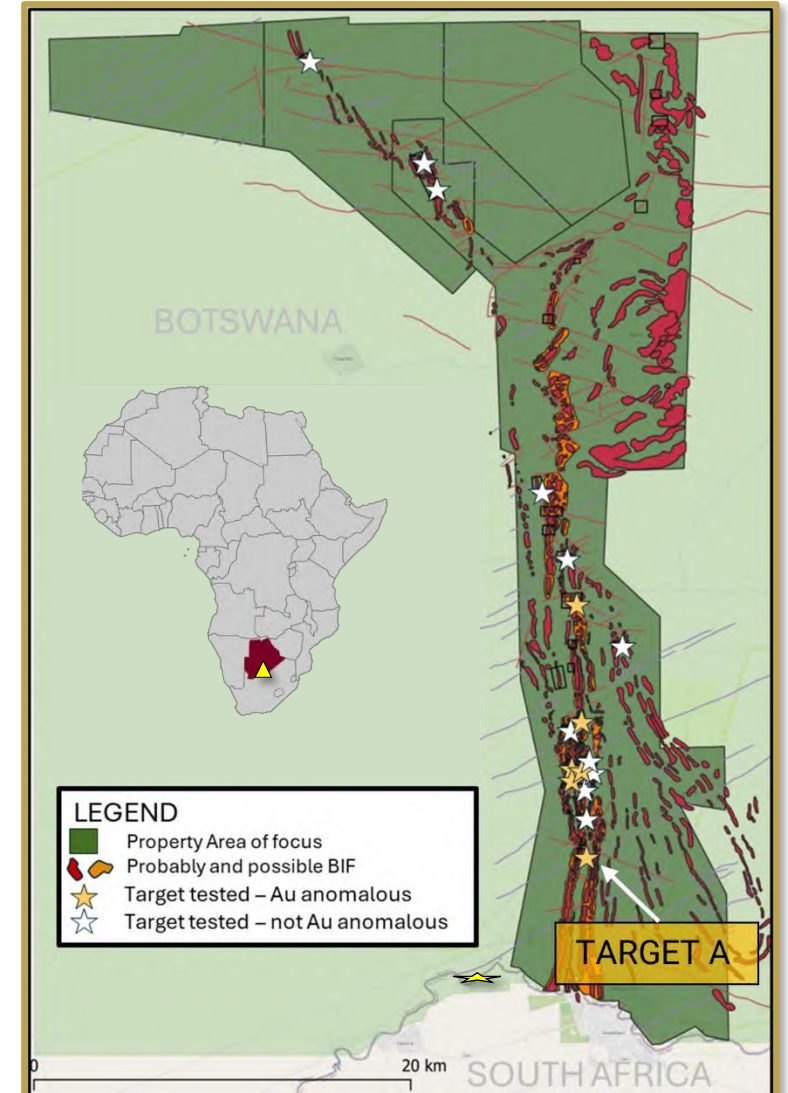


EFFICIENT AND COST-EFFECTIVE EXPLORATION

For 2025: US\$1.2 Million and in 12 months exploration time :

- High-resolution UAV magnetic surveys flown over 85% of the property >20,000 line-km completed;
- Mobile RC drilling platform completed 175 holes in ~9 weeks of total drilling time; average 3 holes / day (up to 7); 4,974 m of drilling;
- In-house sample preparation for verified QA/QC protocols and faster turnaround; 754 RC samples collected (bedrock and base of Kalahari);
- Approximately 45 km of Kraaipan strike length assessed;
- Six areas of anomalous gold discovered for follow-up.

Traditional exploration methods could take three or more years to complete a similar program and could cost between \$5 to \$7 M.



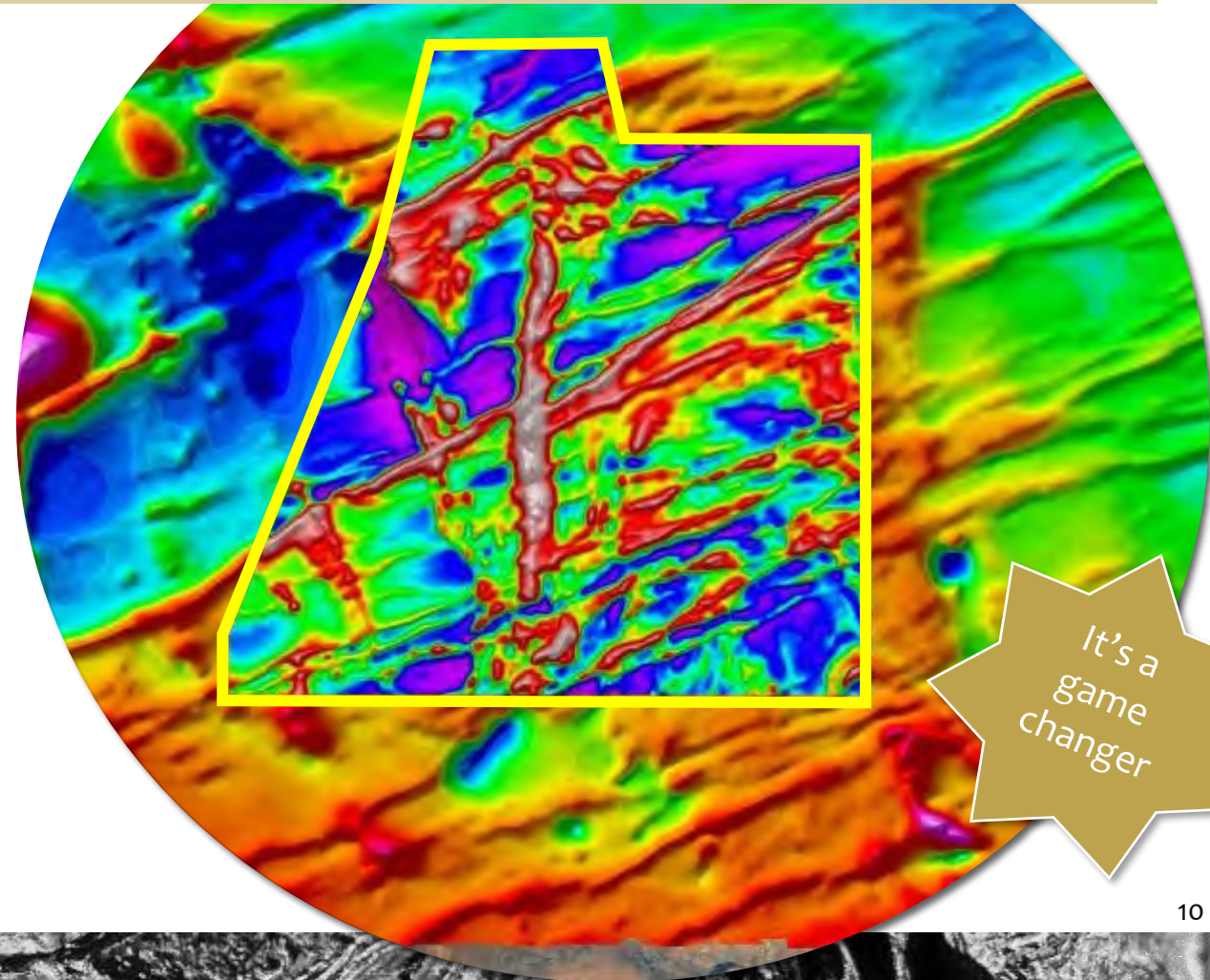


- Provides mag data at a resolution currently only associated with ground mag surveys.
- **Remote Mapper** can produce 1000 line-km per day of data; ground mag produces ~20 line-km of data per day.

EFFICIENT, HIGH RESOLUTION UAV
MAGNETIC SURVEYS



14 years
in the
making



It's a
game
changer



Drill truck equipment - processes and equipment optimized for the Kalahari terrain

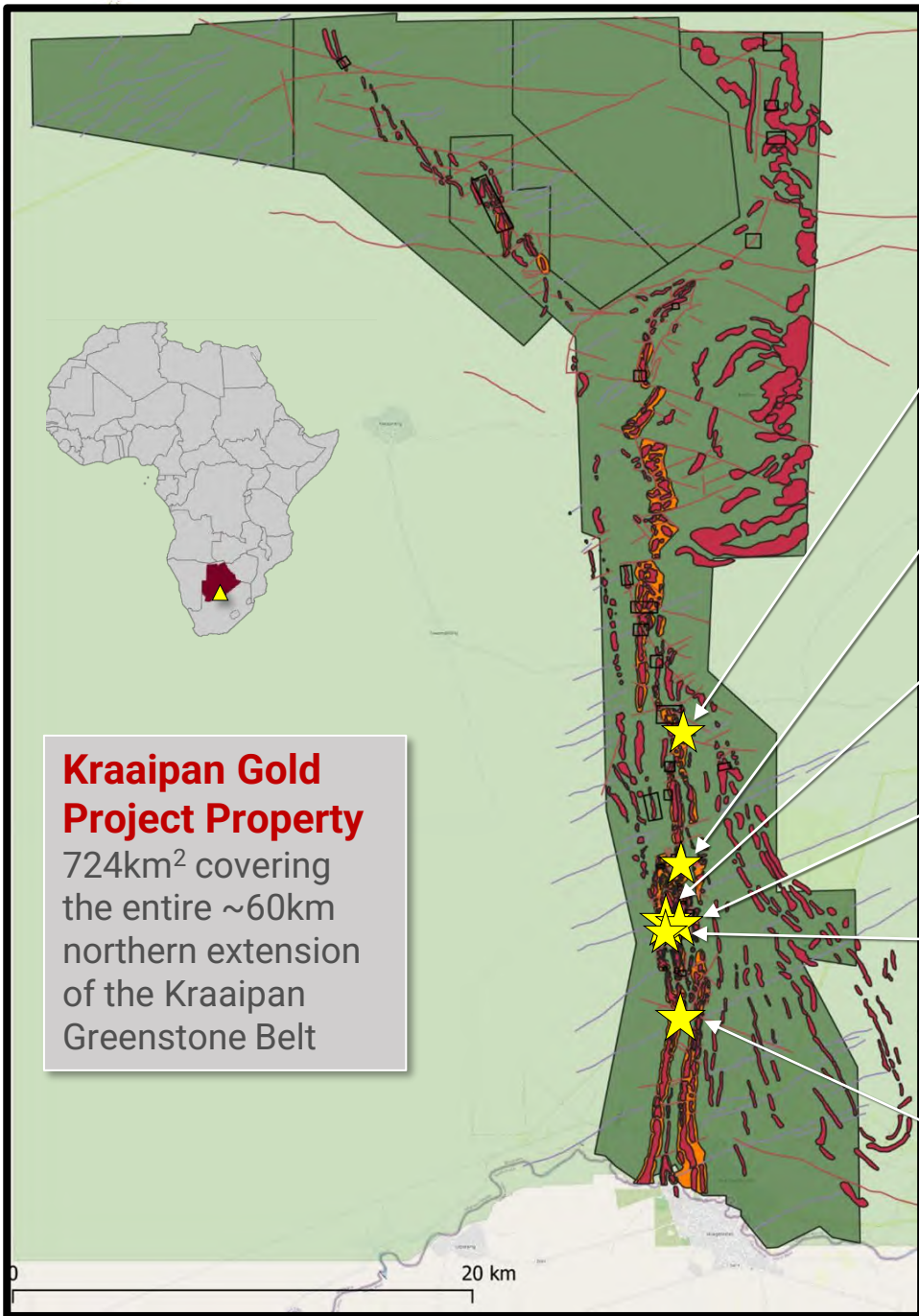


- Optimization of mobile RC drill platform reduced vehicles to two; air compressor truck tows a trailer-mounted RC drill rig; pick-up truck carries drill tubes.
- Pickup-truck-to-drill flow of drill rods; no unloading; efficient.

Example: Summer 2025 RC drill program spanned over 45 km of strike of KGB; 175 holes completed, averaging 3 holes / day (up to 7) for a total of 4,975 m of drilling of Kalahari overburden and the underlying bedrock

RESULTS OF FIRST 12 MONTH PROGRAM

SIX AREAS WITH ANOMALOUS GOLD FOR FOLLOW UP



Target C: Elevated Au in overburden sample 0.24 g/t Au

Target AE: 0.90 g/t Au over 4 within 0.40 g/t Au over 13 m

Target AF: 0.43 g/t Au over 10m within 0.71 g/t Au over 3m

Target K: Elevated Au in overburden sample 0.28 g/t Au

Target Y: Elevated Au; up to 0.091 g/t over 6m

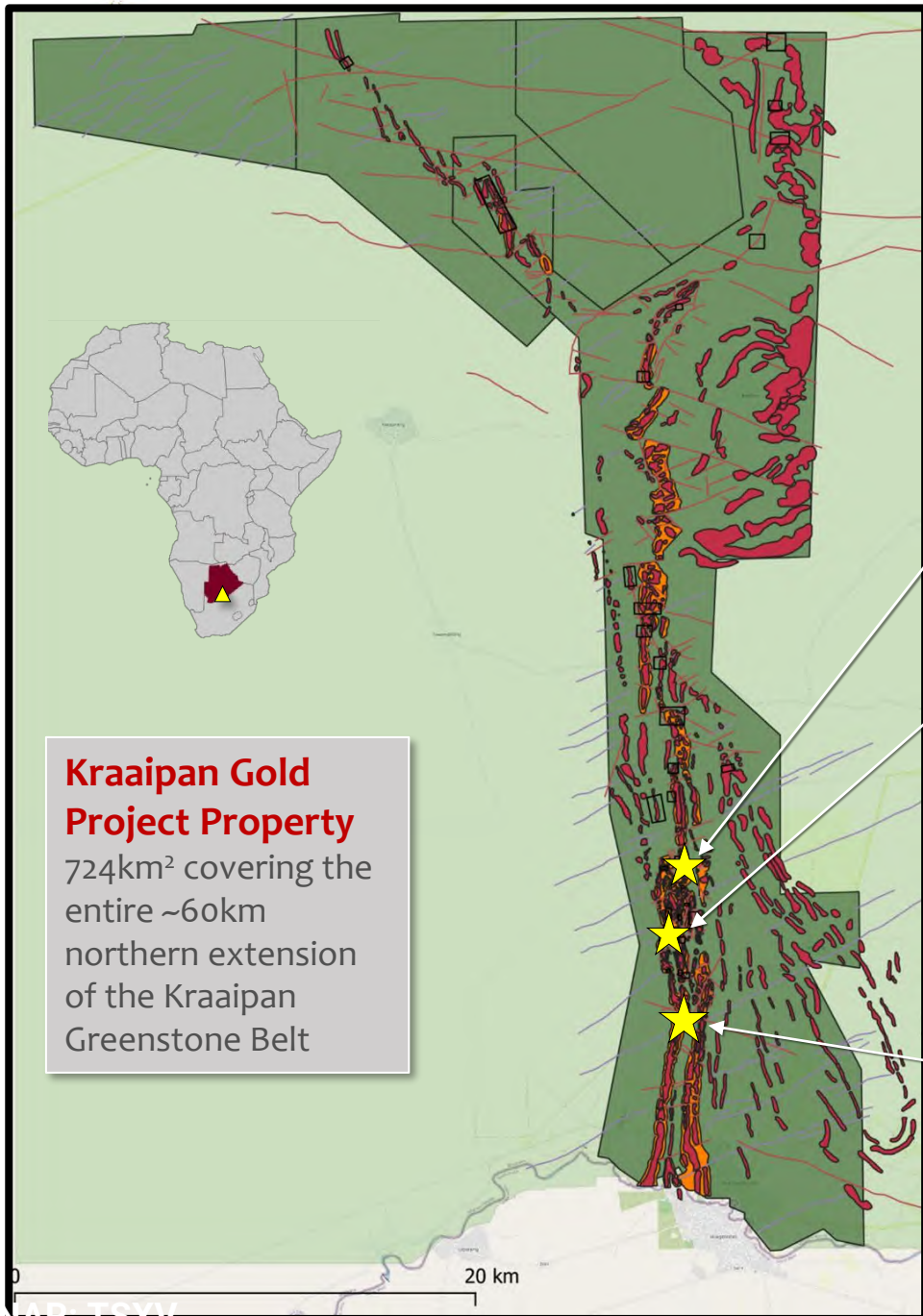
Target A: 1.56 g/t Au over 30 m from surface including:
7.32 g/t Au over 3 m
4.26 g/t over 4 m from 10 m



President and CEO, Eira Thomas with Kraaipan Project Geologist, Manelisi Mdze and the Remote Mapper UAV System.

2026 FOLLOW UP PROGRAM

THREE TARGET AREAS IN FOCUS: AE, AF AND A



Kraaipan Gold Project Property

724km² covering the entire ~60km northern extension of the Kraaipan Greenstone Belt

Target AE: 0.90 g/t Au over 4 within 0.40 g/t Au over 13 m

Target AF: 0.43 g/t Au over 10m within 0.71 g/t Au over 3m

Target A: 1.56 g/t Au over 30 m from surface including:
7.32 g/t Au over 3 m
4.26 g/t Au over 4 m from 10 m





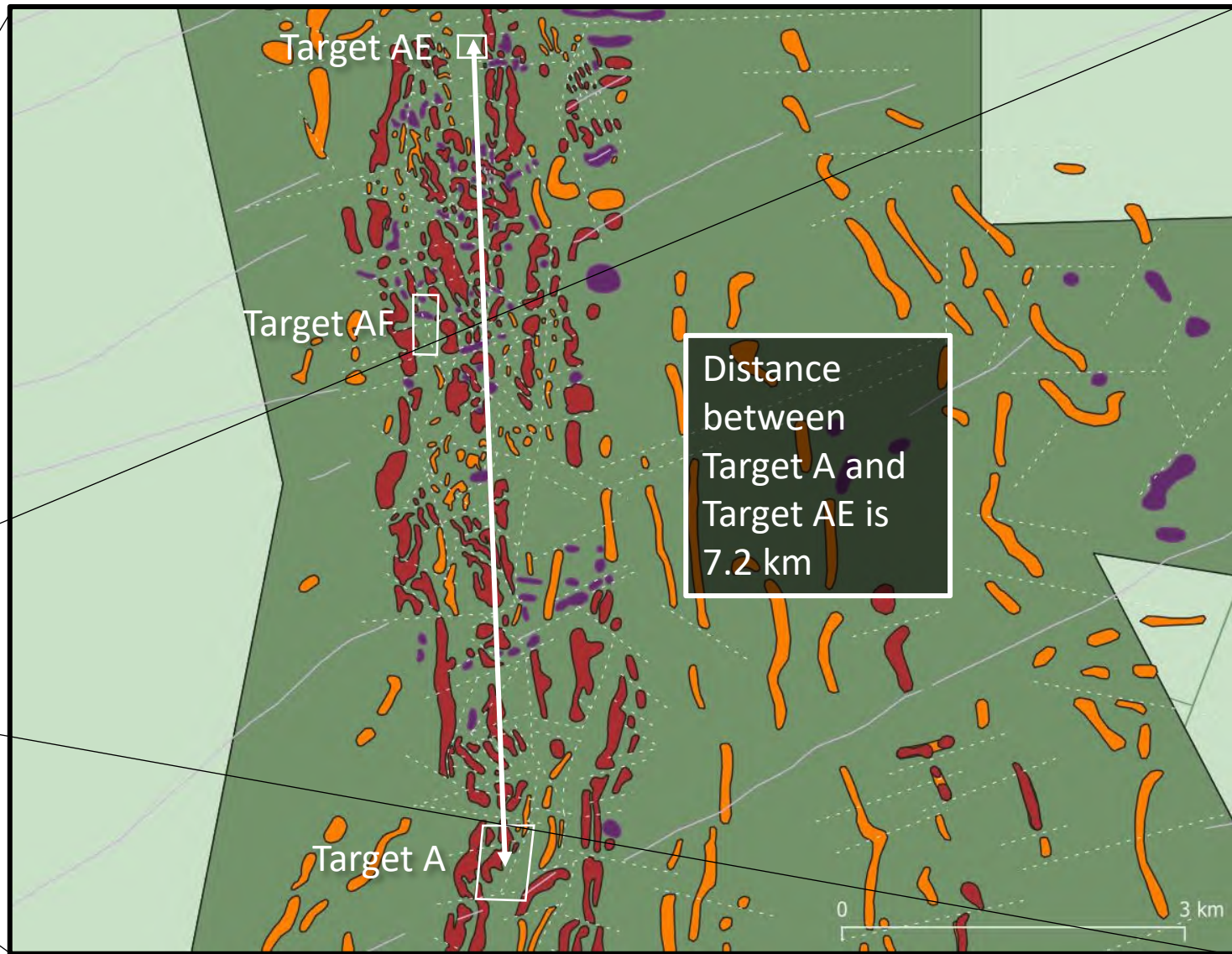
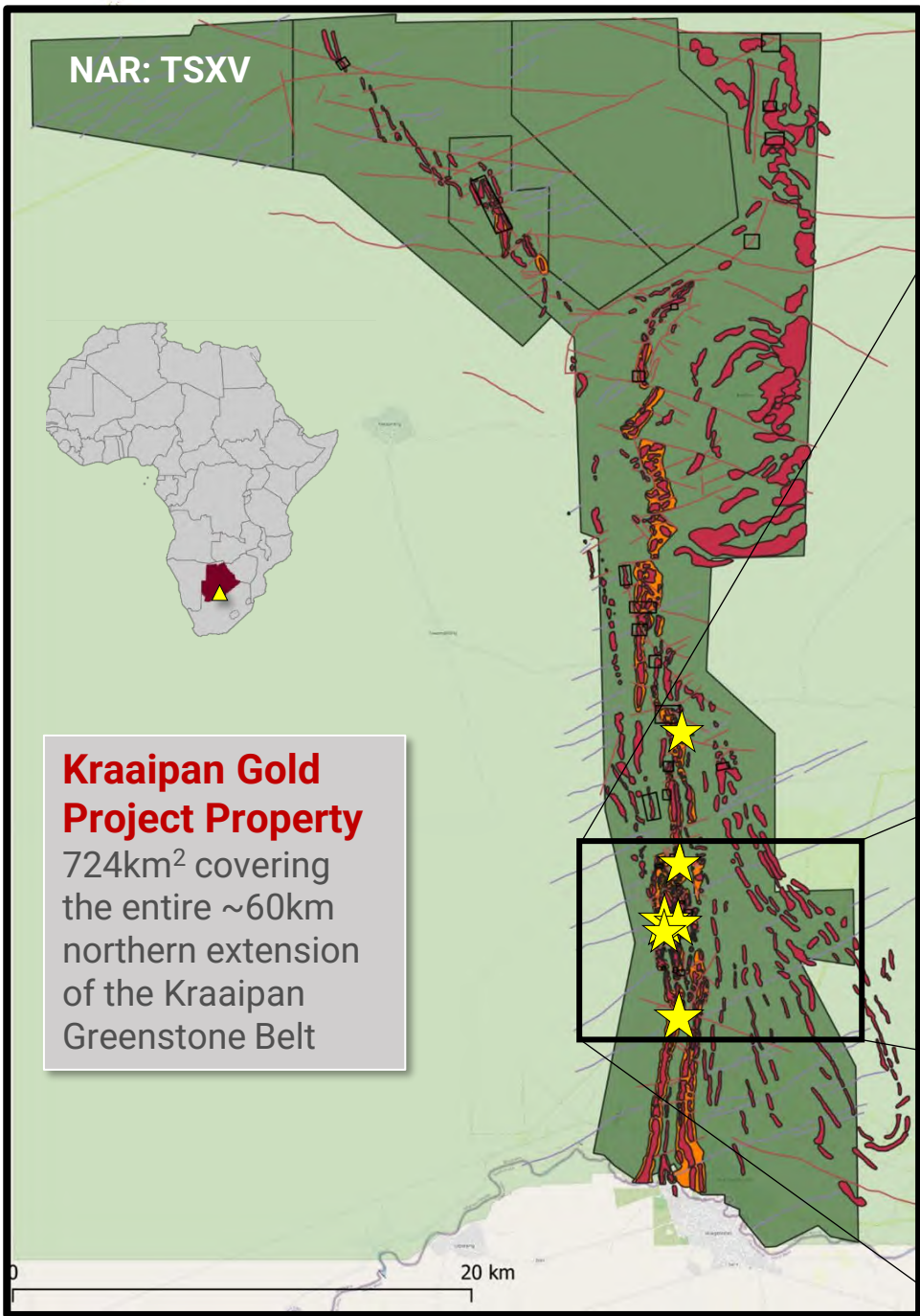
FOUR, THREE WEEK ROTATIONS - RC DRILLING PLATFORM

- **R1 and R2** – angled RC drilling follow up of positive results obtained from the 2025 drilling.
 - Focused on Targets A, AE, AF to better understand subvertical structures and mineralization.
- **R3** – vertical RC drilling to test new regional targets in the northeast of the property.
- **R4** – further follow up on positive results from Rotation 1 and possibly Rotation 2 incorporating core drilling.



RC DRILLING FOLLOW UP OF 2025 RESULTS

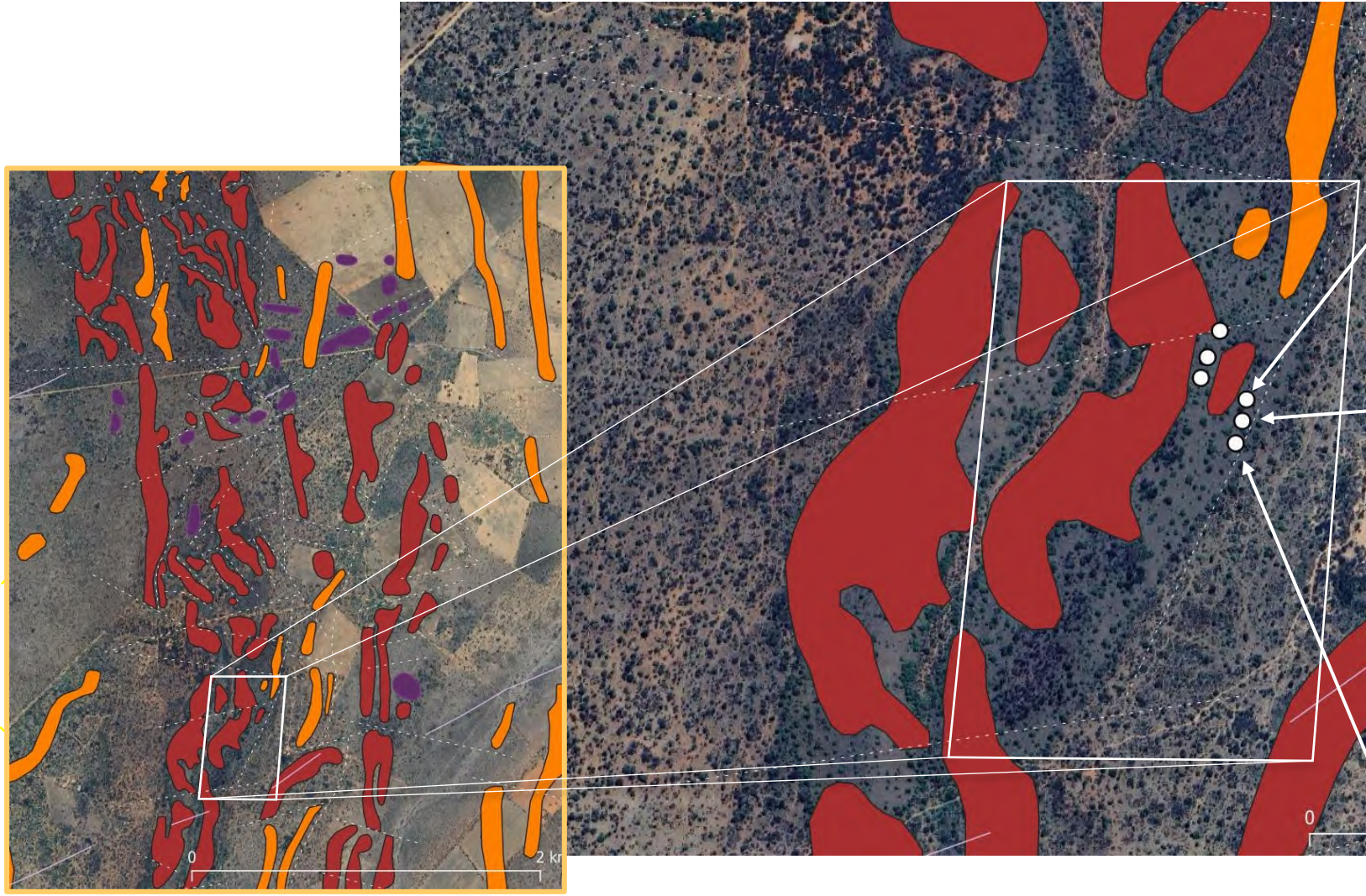
THREE AREAS THE FOCUS OF EARLY 2026 DRILLING





LEGEND

- Target Area
- 2025 RC Hole
- 2026 RC Hole
- Surface Rock Sample
- Higher Relative Mag Units
- Lower Relative Mag Units
- Remnant Lows



KR25-155

Azimuth: 290° Dip: 60°

- **0.21 g/t over 6 m from 5 m***

including

- **0.73 g/t Au over 1 m from 10 m***

Host rock: ironstone

KR25-156

Azimuth: 280° Dip 60°

- **1.05 g/t Au over 9 m from 14 m**

Including

- **2.59 g/t Au over 3 m from 20 m***

Host rock: BIF

KR25-157

Azimuth: 280° Dip: 60°

- **1.56 g/t Au over 30 m from surface***

including

- **4.26 g/t over 4m from 10 m***

Host rock: Fractured bedrock, saprolite and phyllite

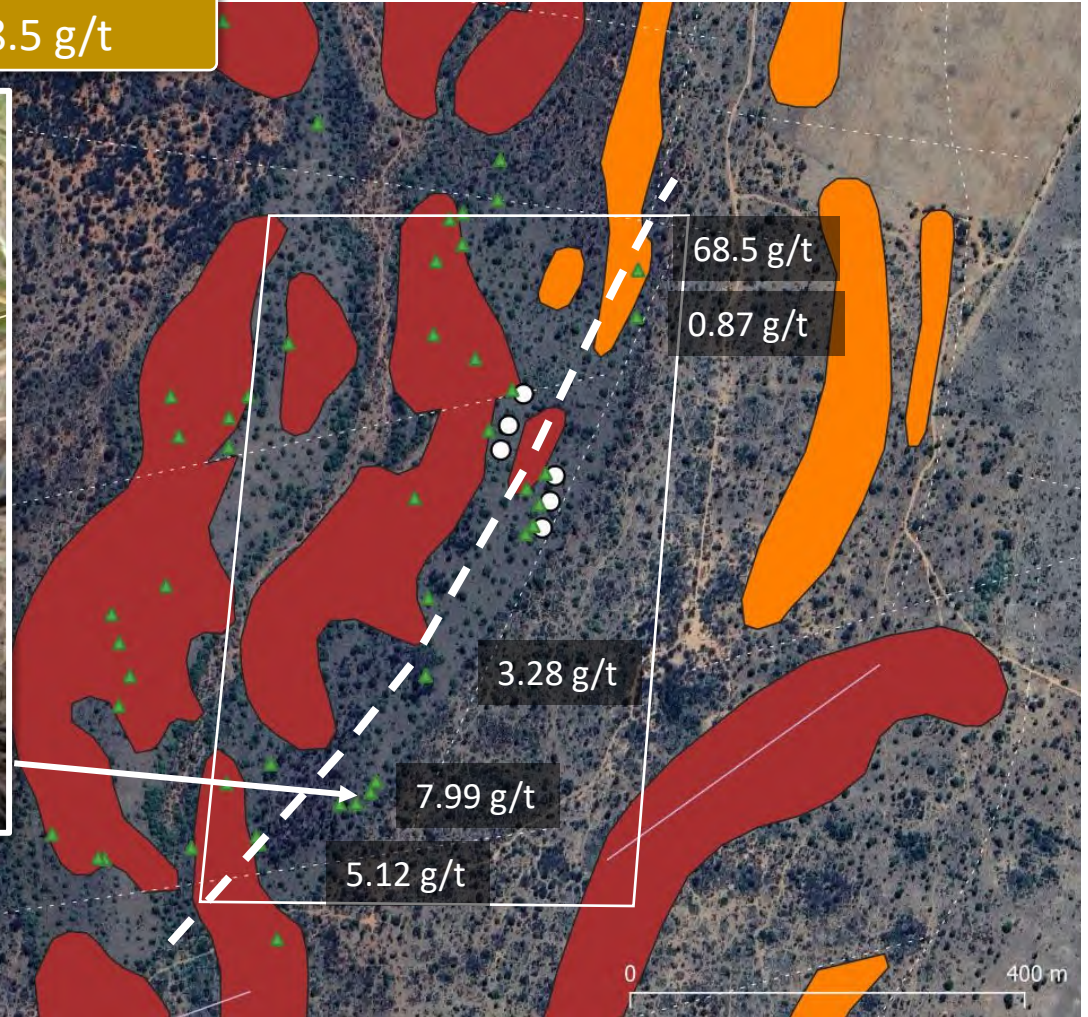


~700 metres of potential strike length, mineralisation at surface with NAR grab samples of up to 68.5 g/t



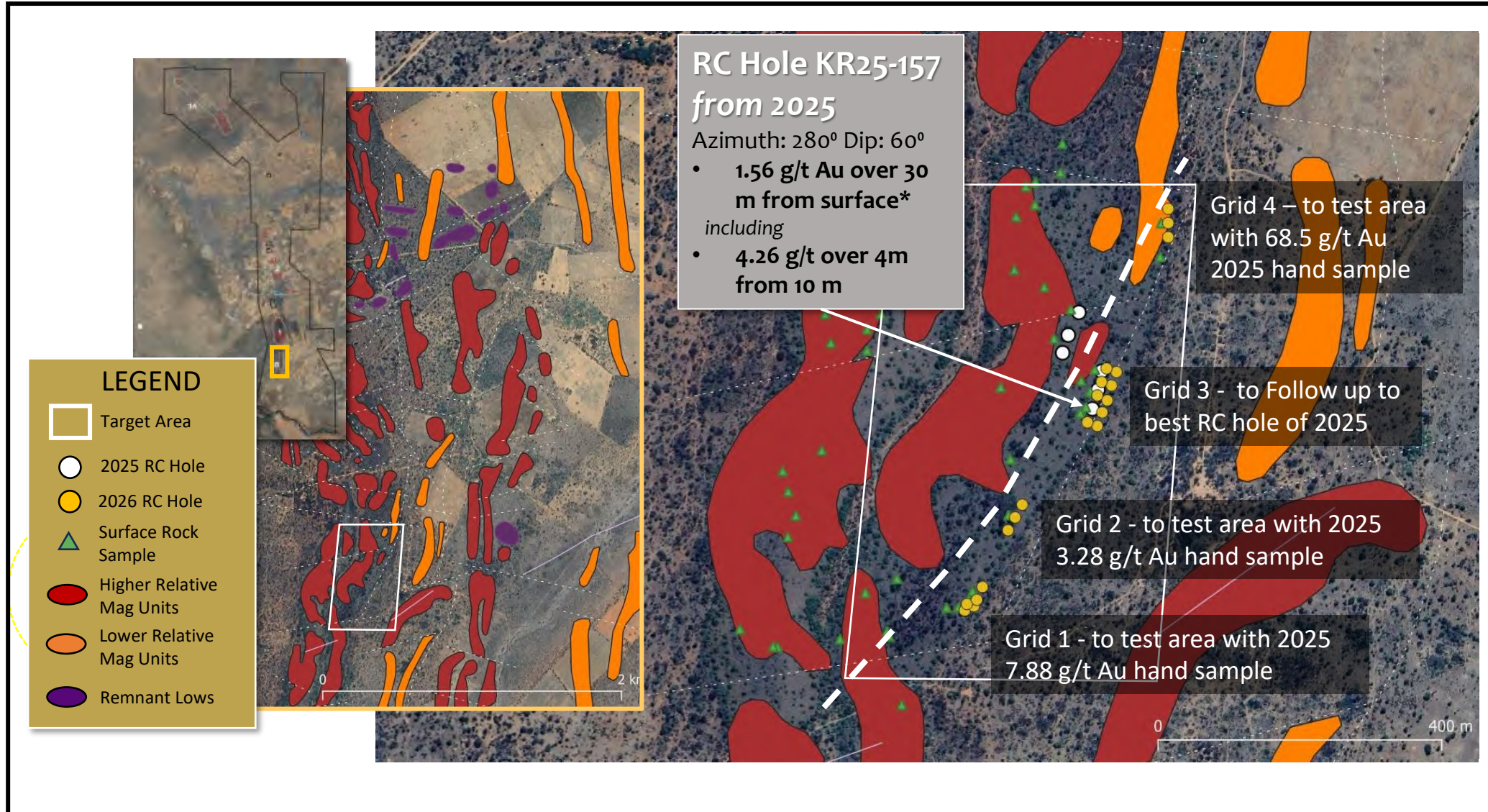
LEGEND

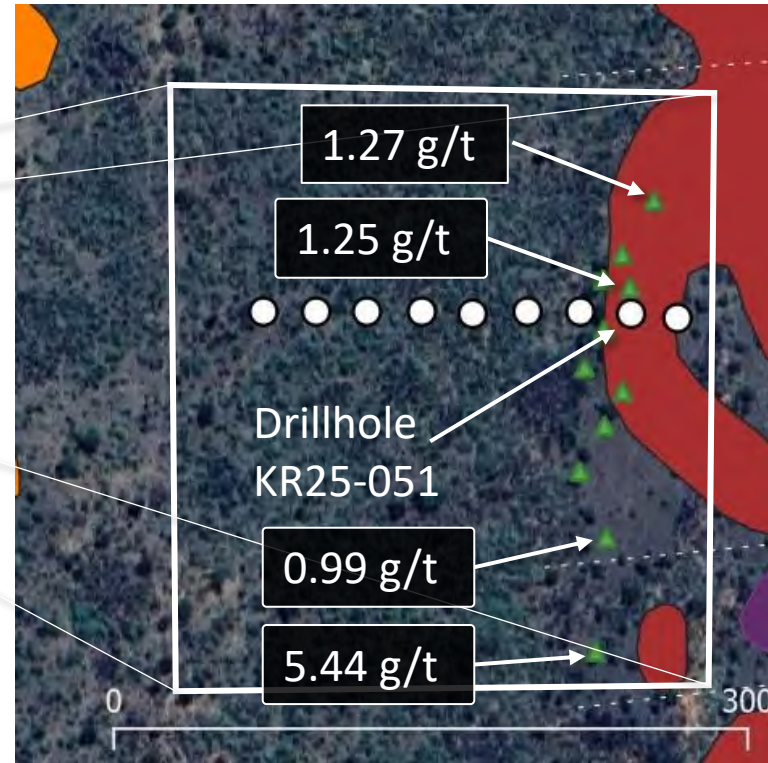
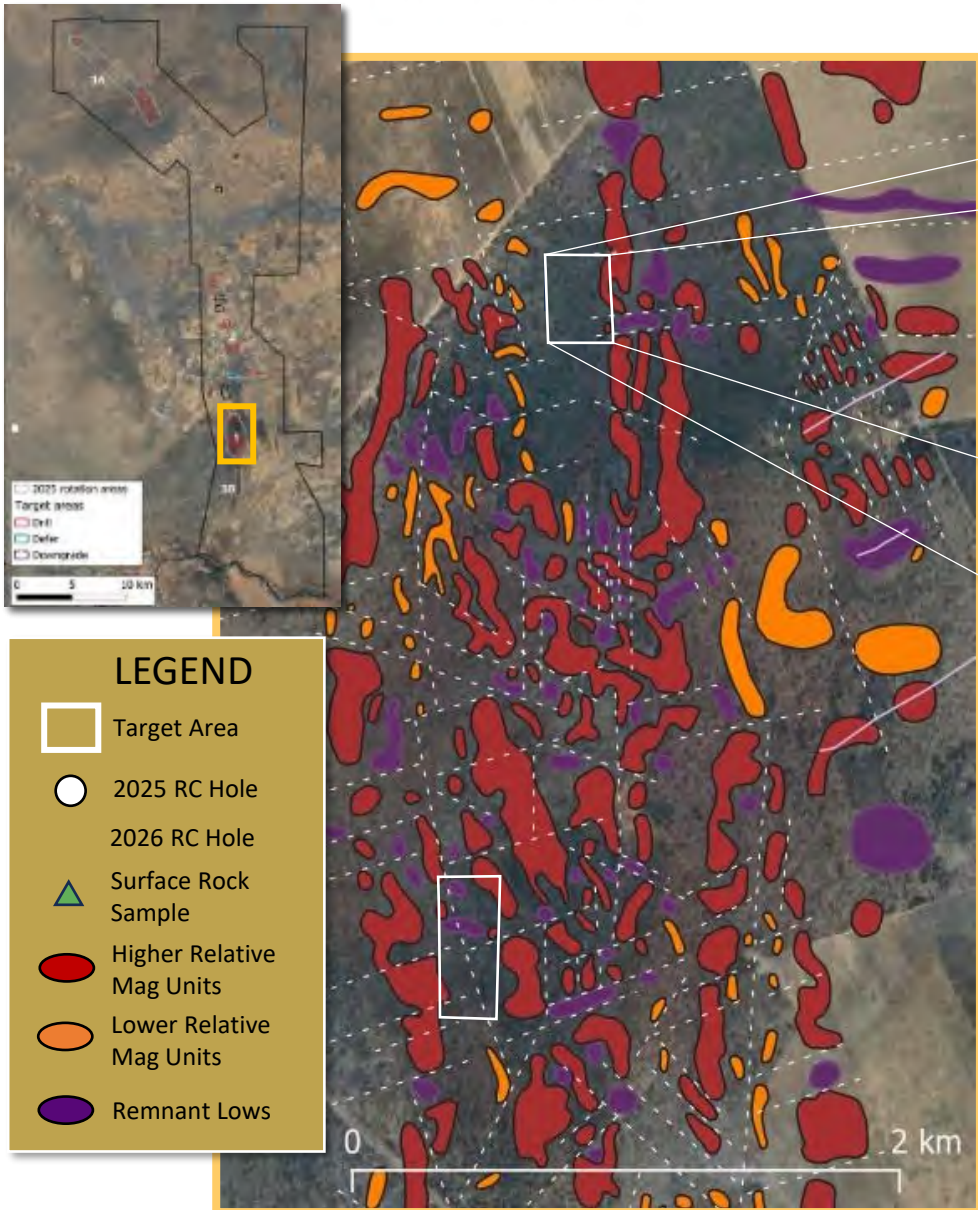
- Target Area
- 2025 RC Hole
- 2026 RC Hole
- Surface Rock Sample
- Higher Relative Mag Units
- Lower Relative Mag Units
- Remnant Lows





Assay results from the 20 angled RC holes completed at Target A during Rotation 1 due the end of May.



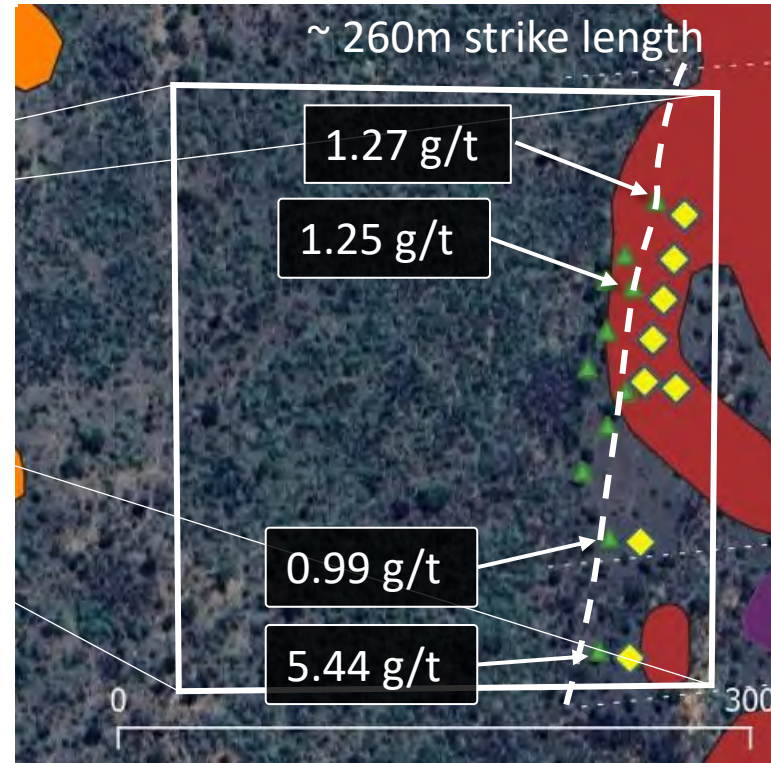
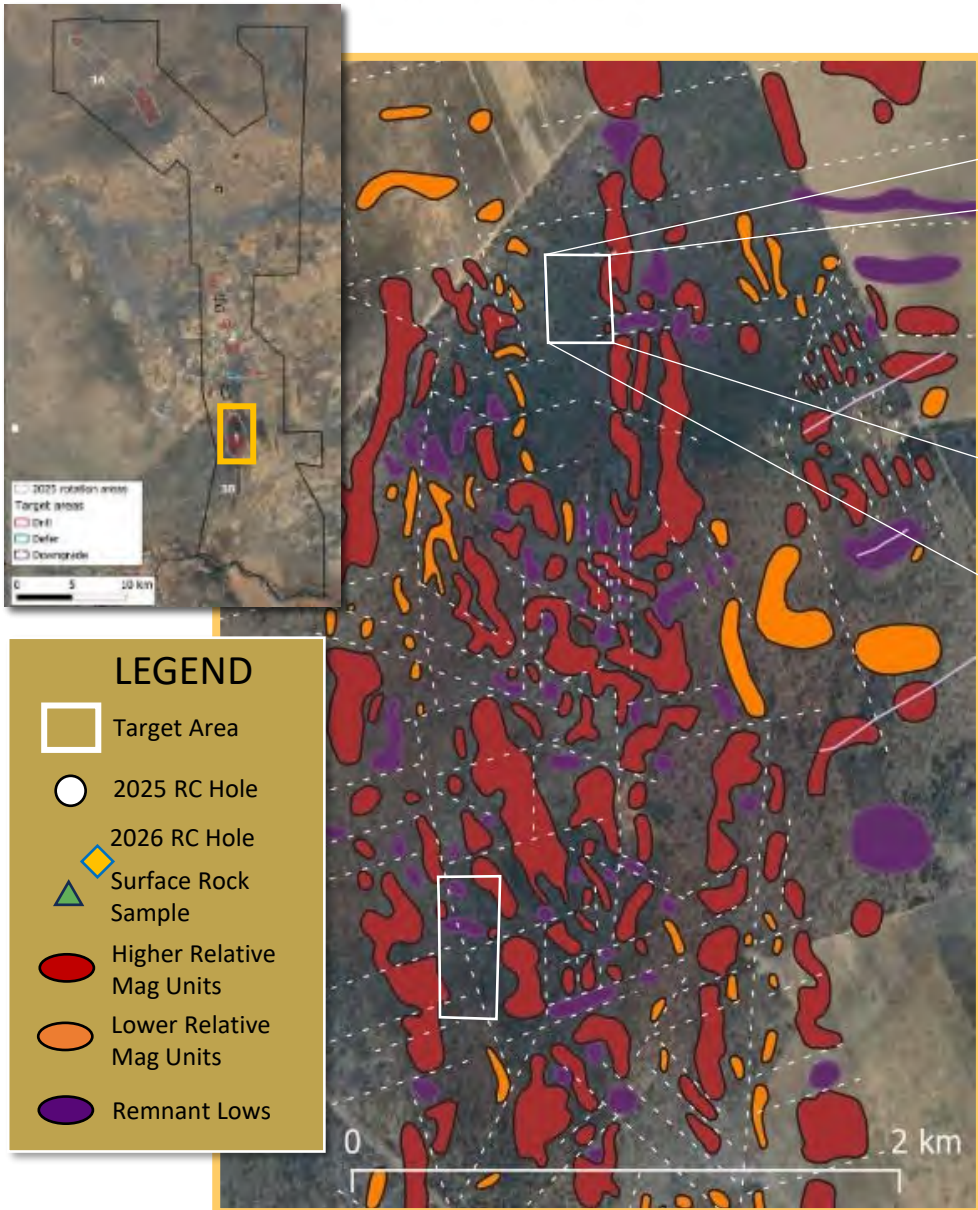


TARGET AE - Hole KR25-051 (Vert)

- 0.40 g/t Au over 13 m including
 - 0.90 g/t Au over 4 m (ended 13 m into bedrock)
- Area averages 4 m overburden



Outcrop at Target AE –Banded Iron Formation and discordant quartz veins.



TARGET AE – R2 2026 RC Drilling

- 8 angled holes planned to cover the ~260m strike potential of the mineralized zone.
- R2 commencing now.



Outcrop at Target AE –Banded Iron Formation and discordant quartz veins.

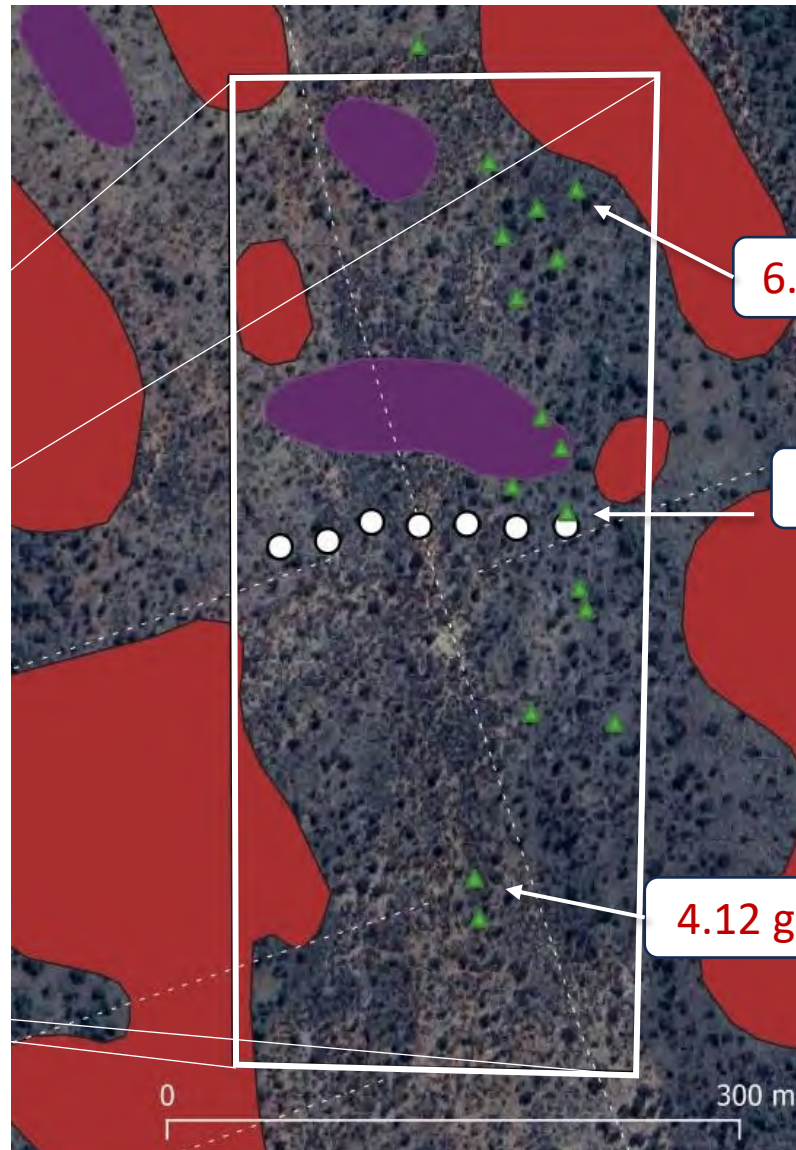
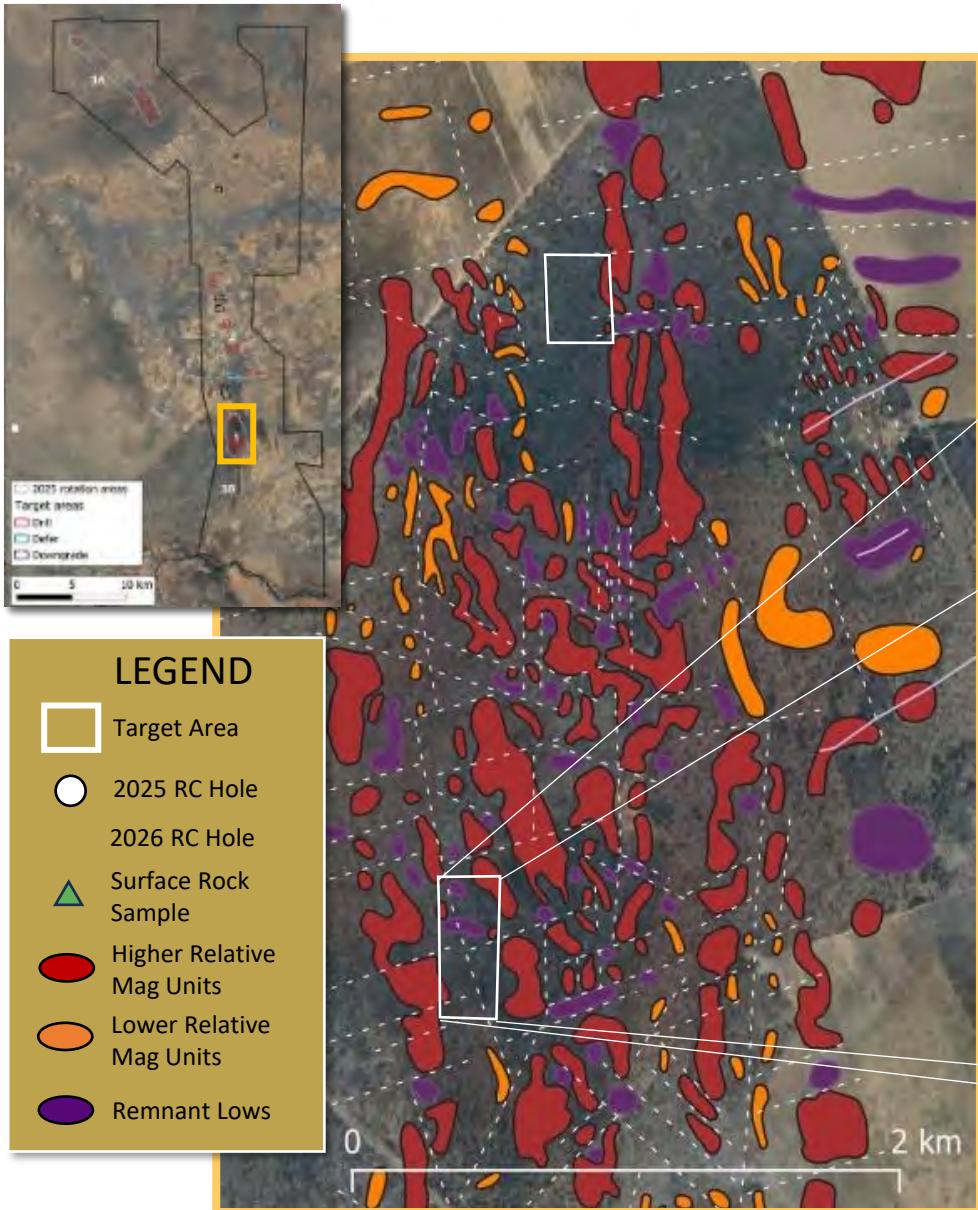


NORTH ARROW

BOTSWANA

TARGET AE

2025 RC DRILL HOLE & ROCK SAMPLE LOCATIONS AND HIGHLIGHTS



- TARGET AF Hole**
KR25-060 (vert)
- 0.43 g/t Au over 10m including
 - 0.71 g/t Au over 3 m (hole ended at 10m)
 - Near sample w/ 3.65 g/t Au
 - Area averaged 9 m overburden
 - Feb 2026 hand sample results expanded the mineralized zone.

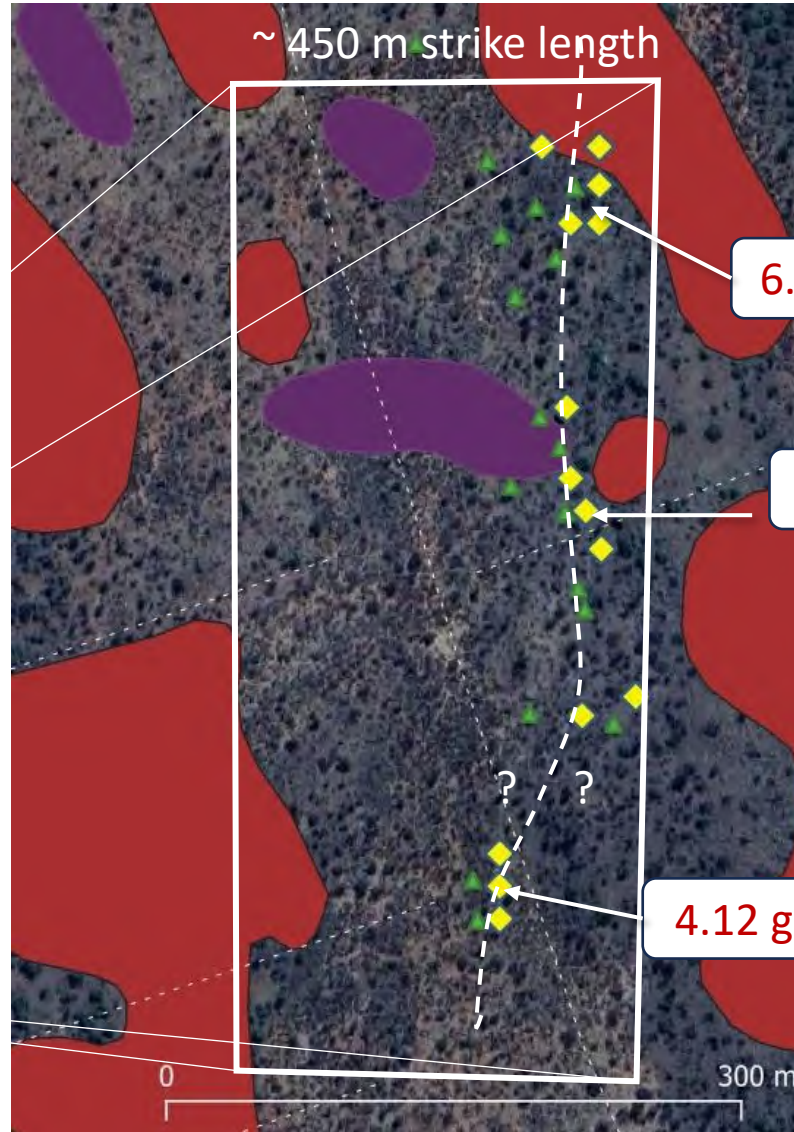
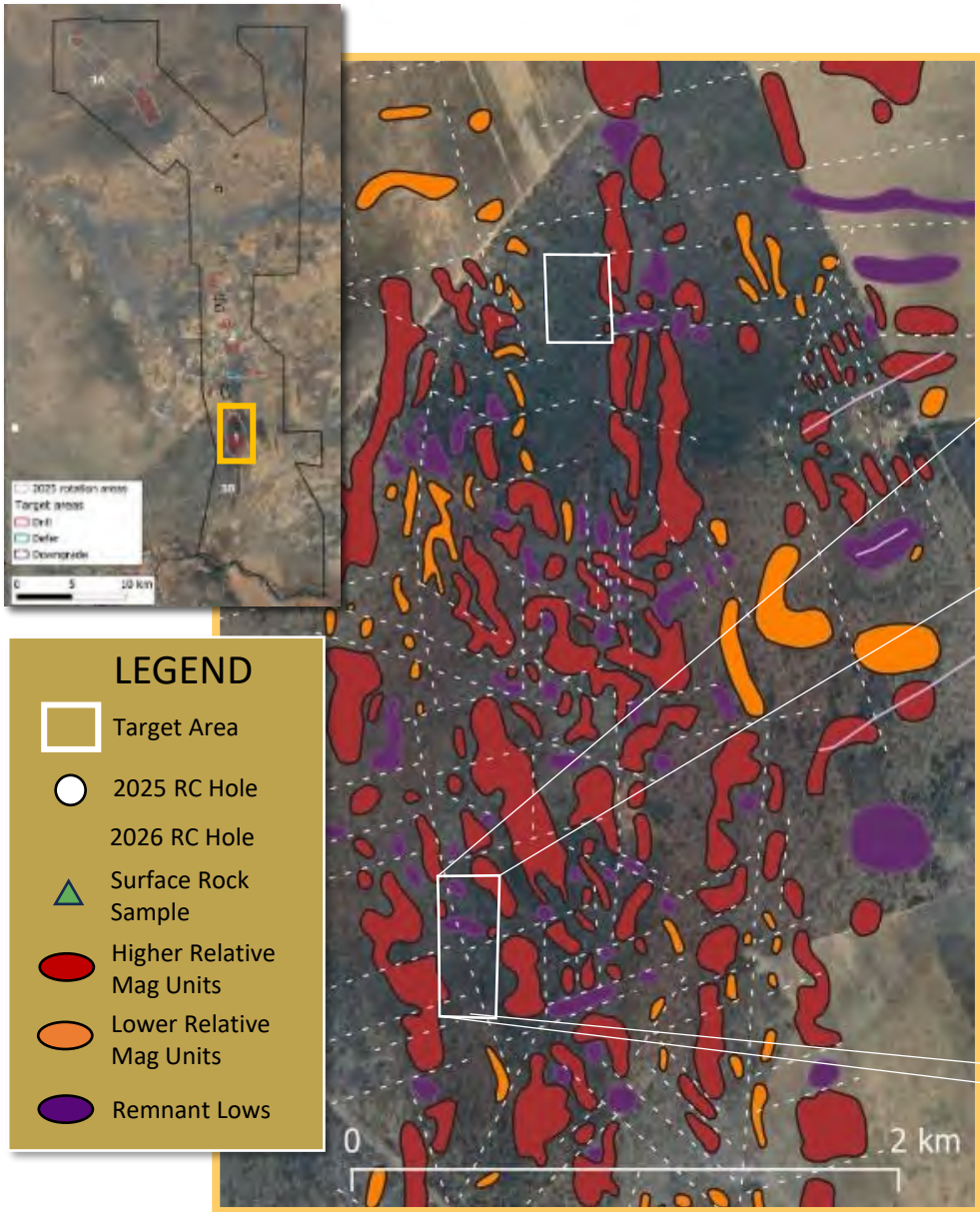


NORTH ARROW

BOTSWANA

2025 RC DRILLING AT TARGET AE

TARGET AF SURFACE ROCK SAMPLES AND R2 DRILLING PLAN



TARGET AF

- 14 angled holes planned for rotation 2 (yellow diamonds)



To satisfy 2nd option NAR will spend \$1,4 US by end of June

Budget is \$2.3 M to the end of Q3; ~\$0.3 M into 3rd yr spend

- A four-rotation drilling campaign commenced early March with each rotation to run for ~3 weeks; targets A, AE and AF
 - **Rotation 1 / Target A complete; Rotation 2 underway**
- Completion of Remote Mapper (“RM”) mag surveys over remaining 15% of property (~11,000 line km);
 - **RM flying complete, walking magnetics in specific areas**
- High-res quad-copter drone imaging and ground mag over priority areas;
- Preparation for core drilling of selected targets; ~Q3 / Q4 2026;
 - **Progress toward core-drill purchase**
- Continuation of prospecting and rock sampling of target areas to better define and characterize host rocks to the mineralization;
- Hyperspectral analysis of over 500 RC chips samples.





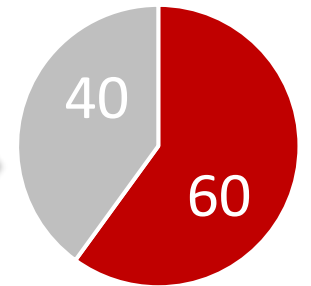
The 1st Option Agreement

North Arrow can earn a 60% interest by incurring US\$5M in exploration expenditures over 3 years:

- i. US\$1M in exploration expenditures by June 30, 2025 (**completed**);
- ii. An additional US\$2M in expenditures by June 30, 2026 (**\$1.6M remain to be spent**)
- iii. An additional US\$2M in expenditures by June 30, 2027 (**~\$300,000 of this to be spent in Q3, 2026**)

Upon spending the US\$5M NAR will issue 1,000,000 shares to Rockman to vest its 60% interest

First Option – NAR 60%



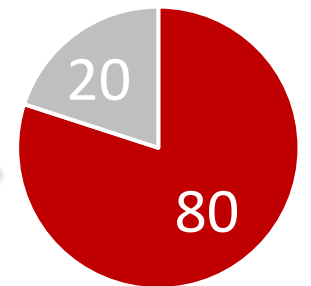
Rockman option to continue as a 40/60 Joint Venture or...
Grant NAR the option to earn an additional 20% - the PEA Option

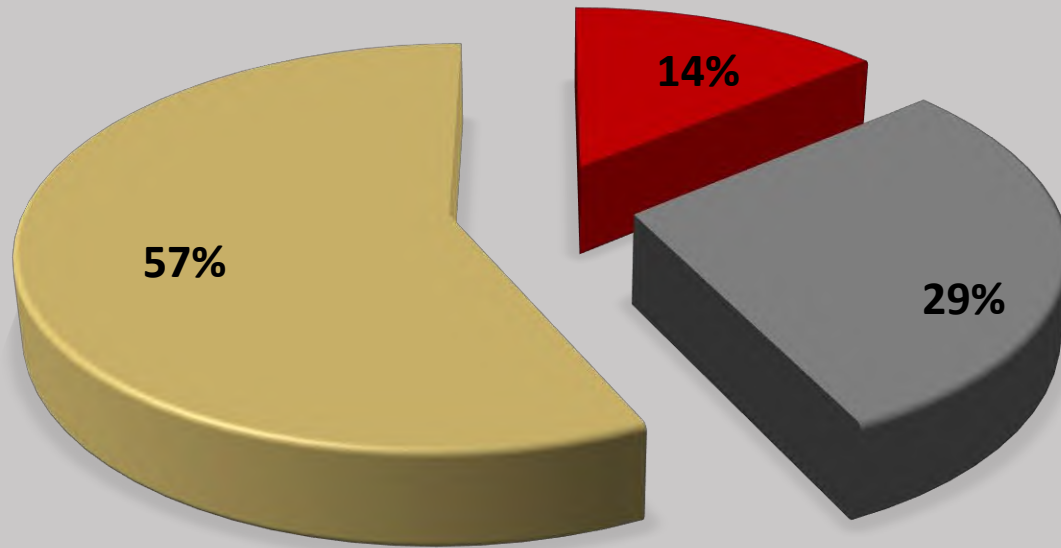
The PEA Option

NAR can earn an additional 20% interest by completing a Preliminary Economic Assessment (“PEA”) of the project

Upon delivery of the PEA, NAR will issue 2,000,000 in shares to Rockman to vest its additional 20%

PEA Option – NAR 80%





■ Management and Directors ■ Key Shareholders ■ Float

SHARE STRUCTURE

Issued and Outstanding	45,993,849
Options	3,215,000
Warrants	14,197,931*
Fully Diluted	62,506,780

*5,214,825 warrants priced at \$0.30 expiring April 28, 2026

Eira Thomas
CEO

John Armstrong
President and COO

Tel: +1.604.668.8355
info@northarrowminerals.com
www.northarrowminerals.com

Kaeli Gattens
Vice President, Communications

Nick Thomas
*Community and Investor
Relations Manager*



NORTH ARROW
MINERALS INC

TSX-V: NAR
OTCID: NHAWF