



NORTH ARROW
MINERALS INC

Kraaipan Project
A Botswana Greenstone
Belt Exploration Opportunity

June 2025



FORWARD-LOOKING INFORMATION

This presentation contains projections and forward-looking information that involve various risks and uncertainties, including, without limitation, statements regarding the potential extent of mineralization, resources, reserves, exploration results and plans and objectives of North Arrow Minerals Inc. These risks and uncertainties include, but are not restricted to, the amount of geological data available, the uncertain reliability of drilling results and geophysical and geological data and the interpretation thereof and the need for adequate financing for future exploration and development efforts. There can be no assurance that such statements will prove to be accurate. Actual results and future events could differ materially from those anticipated in such statements. These and all subsequent written and oral forward-looking statements are based on the estimates and opinions of management on the dates they are made and are expressly qualified in their entirety by this notice. The Company assumes no obligation to update forward looking statements should circumstances or management's estimates or opinions change.

QUALIFIED PERSON UNDER NI 43-101

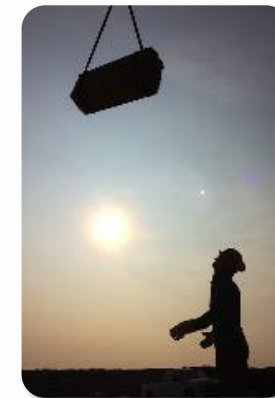
Disclosure of a scientific or technical nature related to North Arrow's projects in this presentation has been reviewed and approved by Ken Armstrong, Chairman of the Board for North Arrow and a Qualified Person under NI 43-101.



NORTH ARROW
MINERALS INC

WHO WE ARE

North Arrow is a Canadian company focused on the identification and evaluation of exploration opportunities.



NAR : TSXV

North Arrow's management and directors have a successful track record of resource discovery and development in Canada and Africa.





Eira M. Thomas (President and CEO) Extensive exploration and development experience in Canada and Botswana; Former officer &/or director Lucara, Suncor, Aber, Kaminak.

Ken Armstrong (Chairman, P.Geo.) 25+ years exploration & evaluation experience w/ Diavik, Aber, and others. Past President NWT & Nunavut Chamber of Mines. Director Cornish Metals.

Blair Murdoch (Director) More than thirty years of experience in senior management of private and public companies.

Torrie Chartier (Director) 25+ years of experience in northern mineral exploration and aviation industries

Allison Rippin Armstrong (Advisor) 20+ years Canadian, African and other international CSR & ESG experience.

WEALTH OF EXPERIENCE





Option to earn up to an 80% interest in
Kraaipan Greenstone Belt Property, southern Botswana
GOLD & BASE METAL OPPORTUNITY

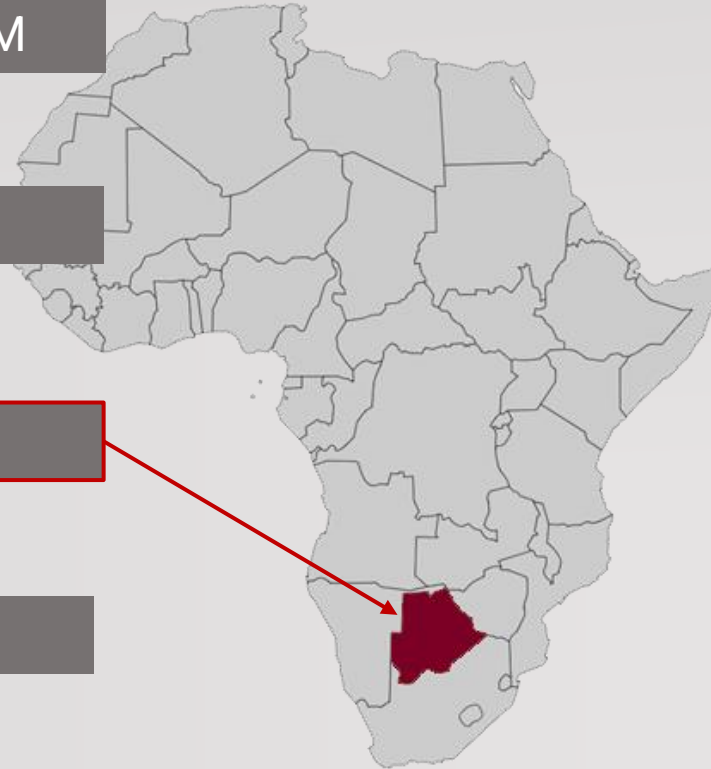
Greenstone Belt with Blue Sky Potential

WORLD-CLASS EXPLORATION TEAM

with a DISCOVERY TRACK RECORD

BOTSWANA FOCUS

BELT-SCALE OPPORTUNITY



- Project generated by specialists in sub-Saharan exploration
- Deploying cutting-edge proprietary technologies to rapidly advance projects in this under-explored region
- Located in Africa's premier miner-friendly / investment jurisdiction
- **>60km of the highly prospective Kraaipan Greenstone Belt under licence** located on trend ~40km north of Harmony Gold's Kalgold multi-million ounce open-pit gold mine



SATISFIES THE INVESTMENT CRITERIA

EVERYTHING YOU NEED TO SEE IN A JUNIOR MINING OPPORTUNITY



MANAGEMENT

Well-renowned team with a history of wealth creation for shareholders in the gold and diamond sectors (Eira Thomas, Ken Armstrong).

KEY SHAREHOLDERS

29%; incl Ross Beaty (7.5%), Management / Directors (15%)

OPPORTUNITY

60 km strike length of underexplored greenstone belt within Botswana; **proven gold endowment of rocks** south of Botswana's border - Harmony's Kalgold Mine

CATALYSTS

Efficient proprietary RC platform drilling ~200 holes testing **16 target areas** through August; **potential for 2025 discoveries; news flow** of assay results well into fall 2025.

SHARE STRUCTURE

28 million shares outstanding; cashed up for 2025 program.



The 2022 Fraser Institute Rankings for **Botswana**

2022 Global Policy Perception Index - Botswana ranked 2nd
2022 Investment Attractiveness Index - Botswana ranked 10th

- Stable democracy, predictable mining legislation; transparent, consistent framework for mining companies.
- Diamond industry (since 1971) has allowed for well-developed infrastructure including transport, water, power and telecommunications.
- Mining is cornerstone of economy however; diamond sector slowdown has government eager to diversify into other mineral resources; actively seeking investment in mining and exploration.

Recent development projects include:

1. **Lucara Diamonds:** mine expansion from open pit operations to underground
2. **MMG:** Khoemacau Cu-Ag mining development.
3. **Sandfire Resources:** Motheo Cu-Ag mining development



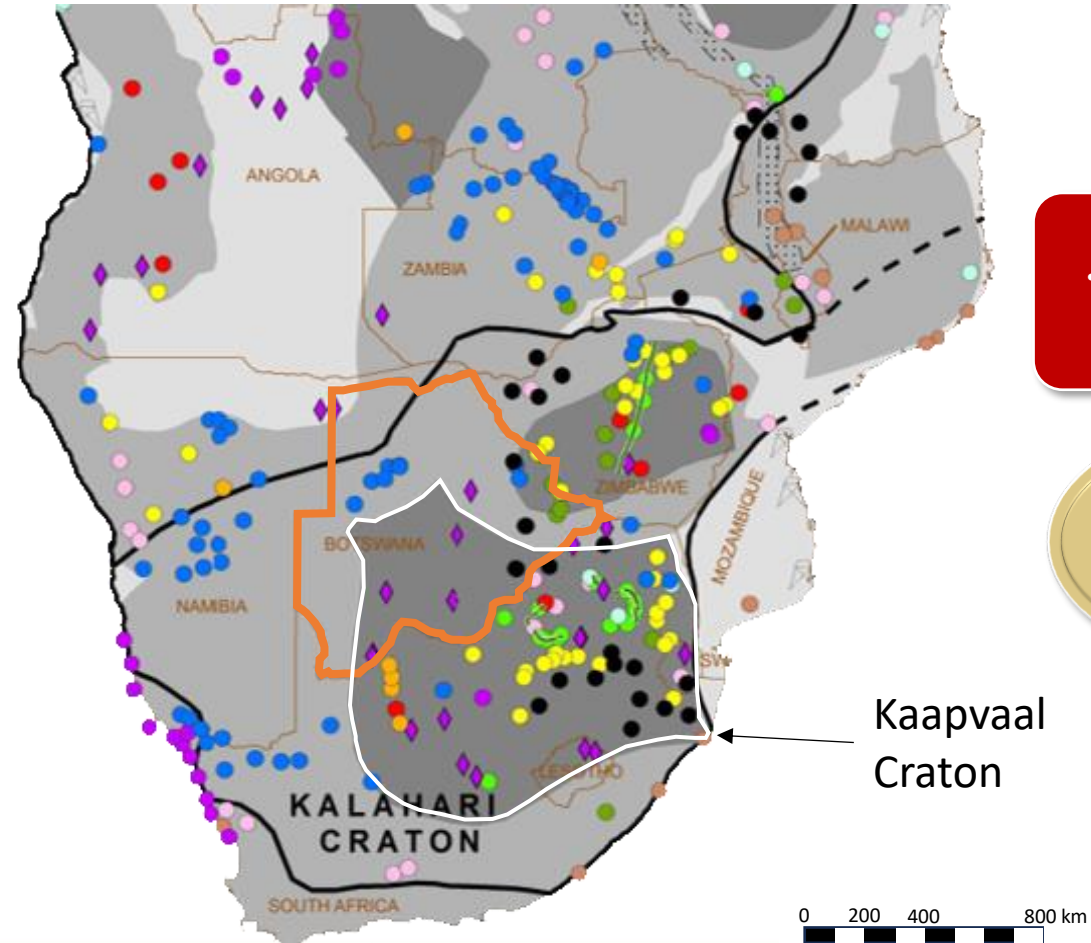
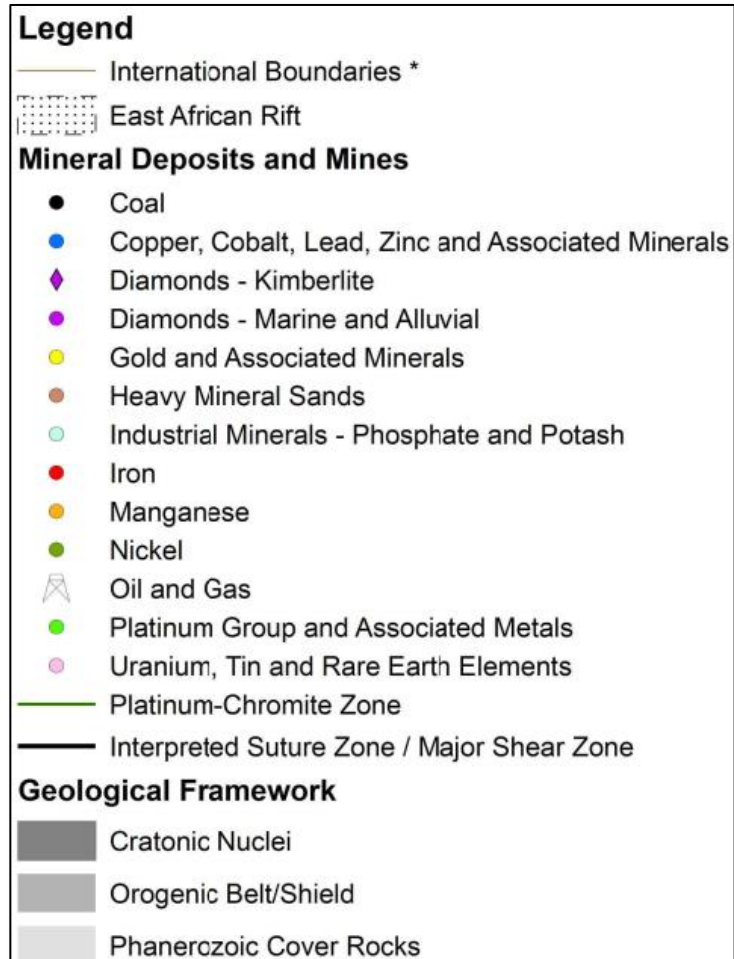
KRAAIPAN GOLD PROJECT



The Kaapvaal craton is a prolific locality for gold, PGE and base metal deposits in South Africa...

...But less so in Botswana

WHY?




Kaapvaal Craton

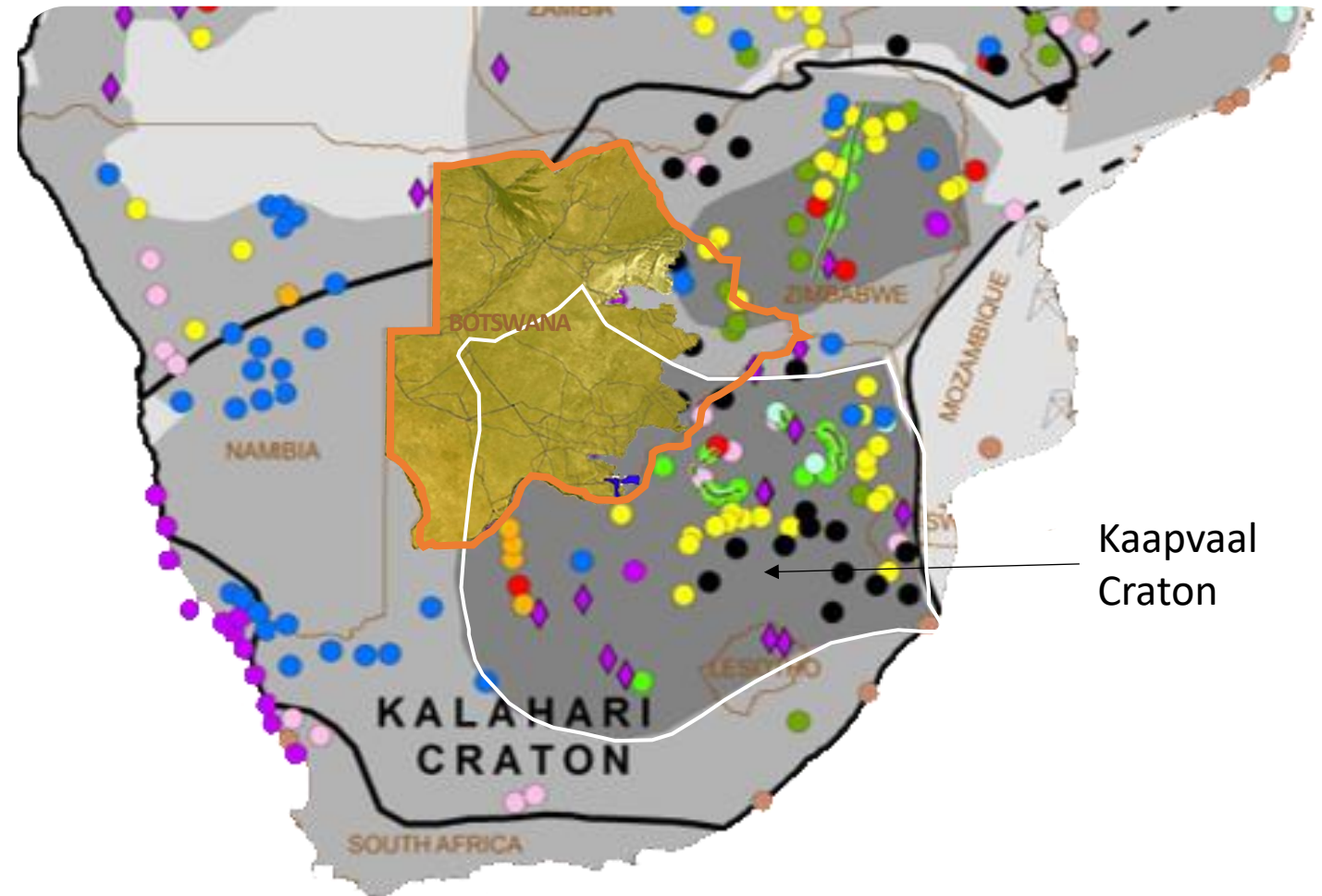


- Kalahari Desert sands cover >70% of Botswana - has hindered exploration of many prospective areas.
- South Africa is twice the size of Botswana but boasts **5 times as many mines**; despite very similar geological potential.

**South Africa has 552 mines
Botswana has just 116 mines***

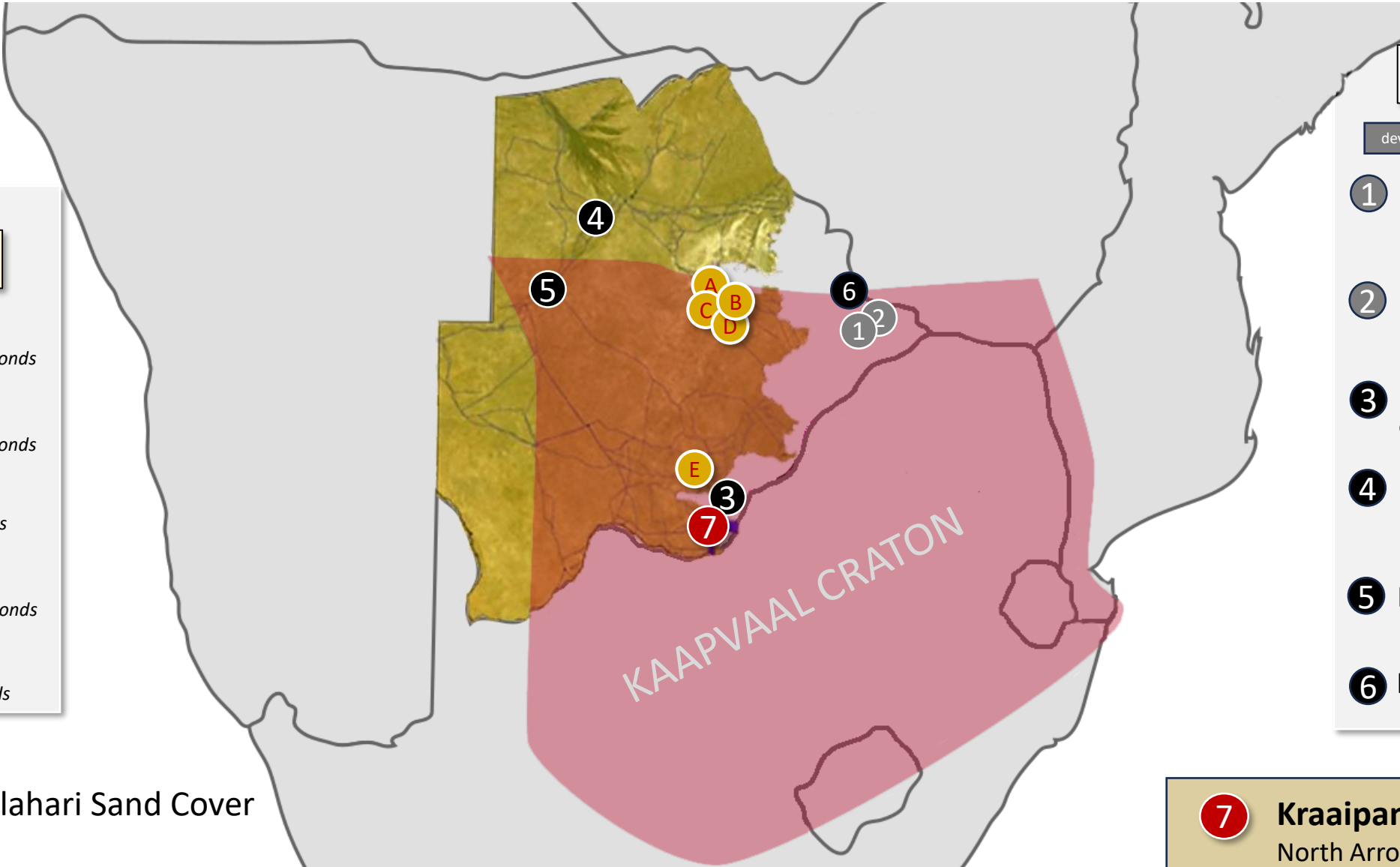
*(*from Africa Mining IQ Website)*

 Kalahari Sand Cover





*NOT AN EXHAUSTIVE LIST



Diamonds

- A** Orapa
Debswana – Diamonds
- B** Lethlakane
Debswana – Diamonds
- C** Karowe
Lucara – Diamonds
- D** Damtshaa
Debswana – Diamonds
- E** Jwaneng
Lucara – Diamonds

Metals

development production

- 1** Selebi Mine
NexMetals Mining– Ni Cu
Currently on C&M; restarting
- 2** Selkirk Mine
NexMetals Mining– Ni Cu
Currently on C&M; restarting
- 3** K. Hill
Giyani Metals – Mn
- 4** Khoemacau
Zone 5 & Boseto
MMG – Cu
- 5** Motheo Mine
Sandfire Resources – Cu
- 6** Mupane Mine
For sale – Au

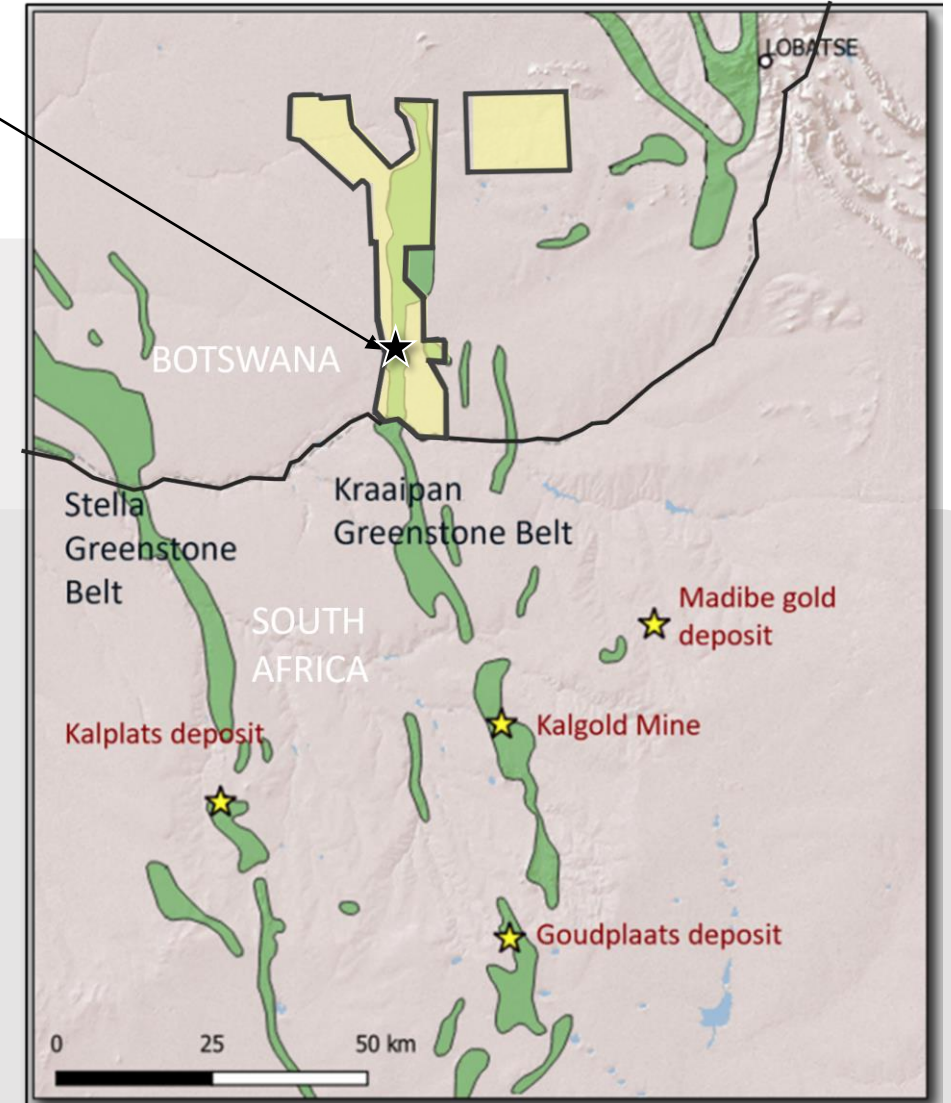
Kalahari Sand Cover

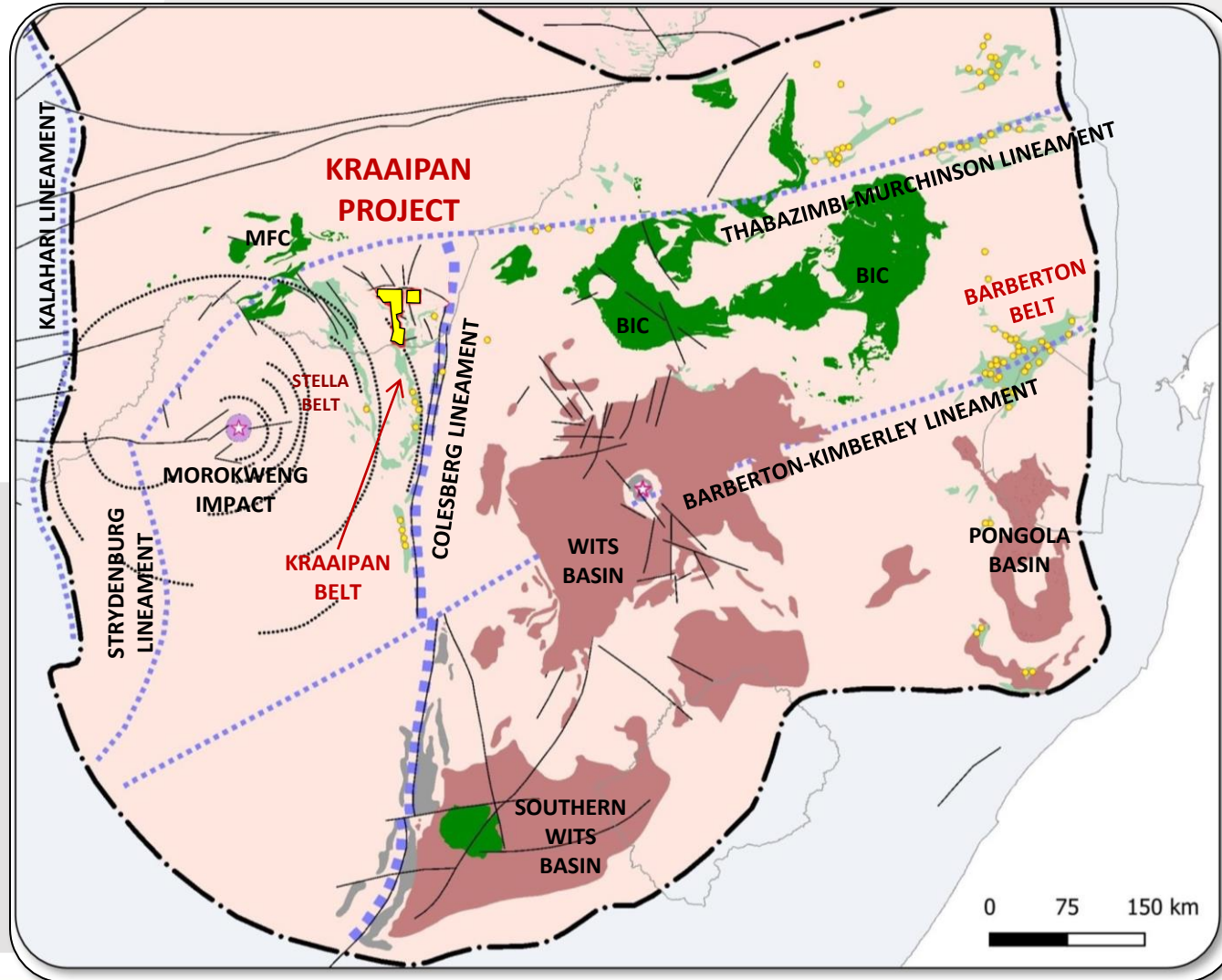
7 **Kraaipan Gold Project**
North Arrow– Au



RAB drill results:
13m @ 1.7 g/t Au
21m @ 1 g/t Au
3m @ 5.1 g/t Au

- ~724 km² mineral concession in southern Botswana covering **the entire ~60km northern extension of the Kraaipan Greenstone Belt (KGB);**
- On trend from the multi-million-ounce Kalgold Mine, South Africa; other greenstone belt related deposits in the area.
- > 80% of the KGB in Botswana is covered by Kalahari sands - poor exposure = underexplored opportunity!
- A first-pass 3,800m Rotary Air Blast (RAB) drill program in the late-90's confirmed anomalous gold mineralisation over a 10 km strike length of outcropping & interpreted iron formation.



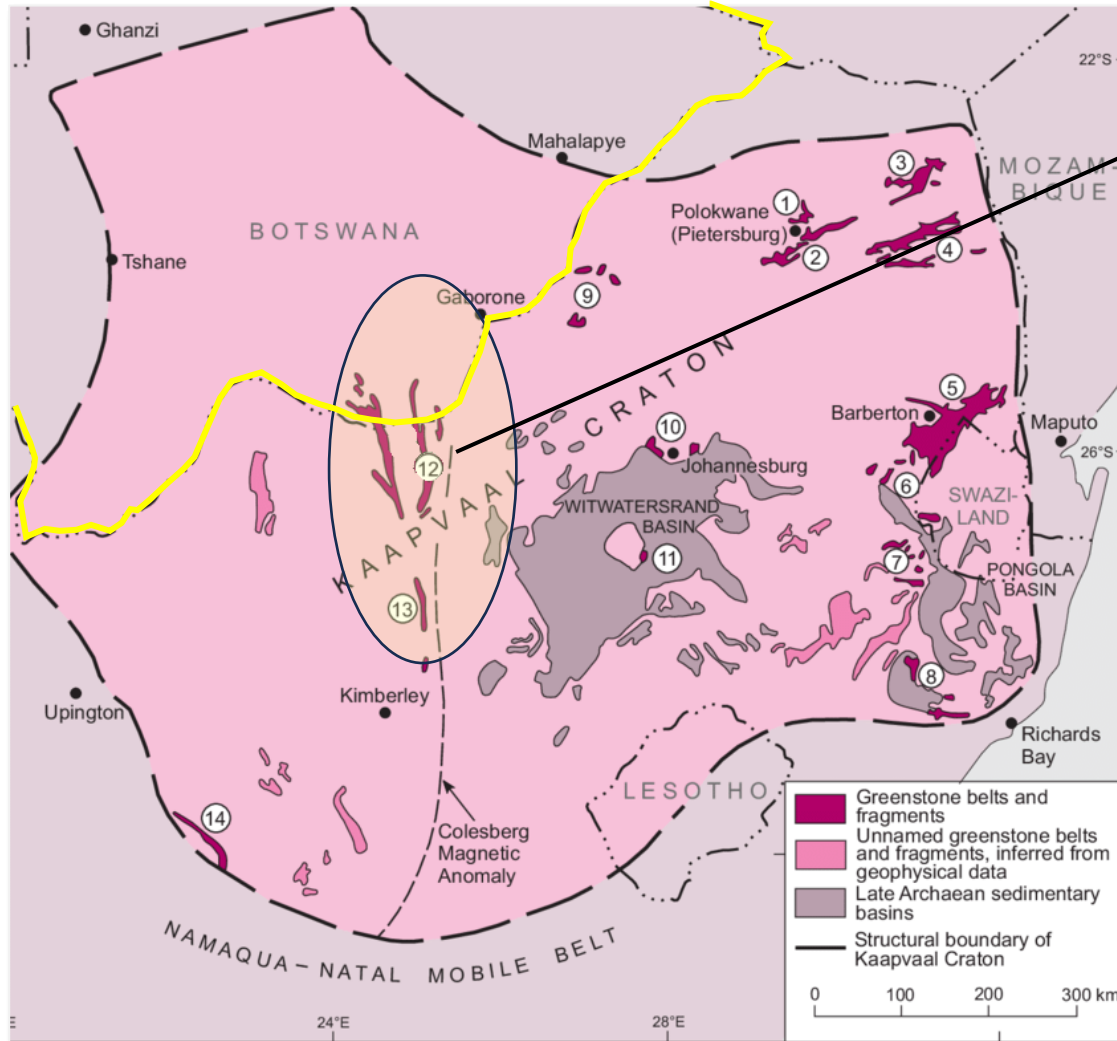


THE COLESBURG LINEAMENT

- 3.1 to 2.9 Ga crustal-scale suture zone
- Formed when the Kimberley and Witwatersrand Terranes collided - the Colesberg Orogeny
- Proximity of **Kraaipan Project** to the Colesberg Lineament provides a compelling belt-scale exploration opportunity.
- Crustal scale structures are important indicators for Archean gold mineralization.



Figure credit: Carl Robert Anhaeusser, Ph.D and D.Sc. University of the Witwatersrand, Johannesburg



12

KalGold Mine, South Africa Mining the *Kalahari Goldridge* Deposit

- Located 40 km south of the Kraaipan Project licenses, within the same greenstone belt.
- Started mining in 1995 (acquired by Harmony in 1999).
- Multi-million-ounce banded iron formation (BIF)-hosted gold deposit with P&P Reserves ~0.39Moz @0.88g/t; additional M&I Resources ~1.35Moz @1.18g/t. Harmony Gold 2023; Technical Report Summary for Kalgold Mine, SA
- Open-pit operation producing from 75Koz to 45Koz annually.
- Mineralized areas extend beyond MRE limits.



**Rockman Resources is a private company owned by the Mineral Services Group (MS Group) and based in Gaborone, Botswana*



In-house proprietary technologies to provide a first-time exploratory window into high potential, sand covered areas of Kraaipan Greenstone Belt

Remote Mapper UAV – High resolution geophysical data



Proprietary Drilling Services – Truck mounted RC drill, project-wide drivability, all-season working conditions. Focus on collecting geochemical samples at the base of the Kalahari and testing priority structural bedrock targets.



In-House Sample Processing – Sample prep of RC samples to happen before shipping to South Africa; less material to ship; quicker turnaround.



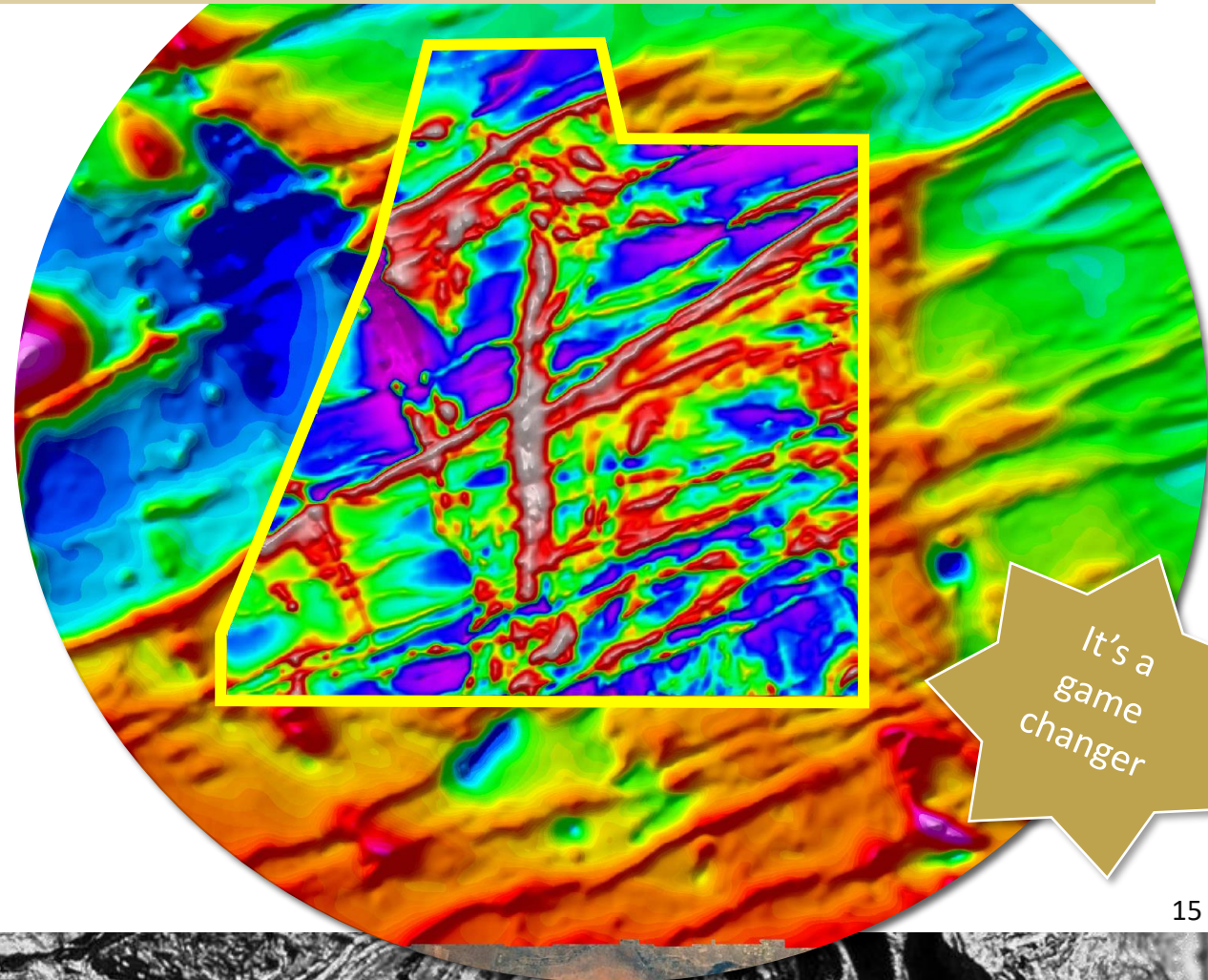
Deep Machine Learning – proven technology using success as a springboard for more. Once deposit defining criteria are understood DML can be applied (Ekati example).





- Provides mag data at a resolution currently only associated with ground mag surveys.
- **Remote Mapper** can produce 1000 line-km per day of data; ground mag produces ~20 line-km of data per day.

14 years
in the
making



It's a
game
changer



DRILL TRUCK EQUIPMENT & PROCESS
REFINEMENT COMPLETE



- Optimization of mobile RC drill platform reduced vehicles to two; air compressor truck tows a trailer-mounted RC drill rig; pickup truck carries the RC drill tubes.
- Pickup-truck-to-drill flow of drill rods; no unloading; efficient.
- Drill program commenced the third week of May; four-to-five holes per day are now being achieved; ~200 estimated total.



High-resolution magnetic surveys (Complete)

- Complete high-resolution (25 m line-spacing) Remote Mapper magnetic surveys of project area
- >20,000 line km completed over the belt to date

Detailed structural mapping, interpretation & target generation (Complete)

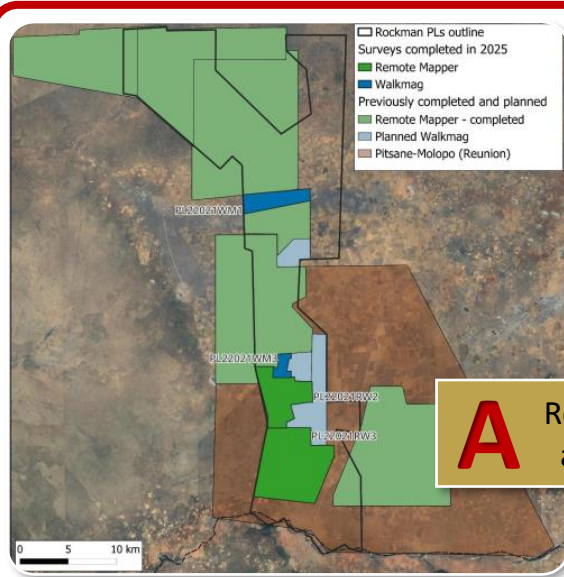
- Based on high-resolution magnetic data & field follow-up - detailed structural mapping and interpretation
- Update geological mapping and definition of prospective regions to identify & prioritize targets for drilling & sampling

Drill test compelling Banded Iron Formation (BIF) & structural gold targets (May through Aug- ongoing)

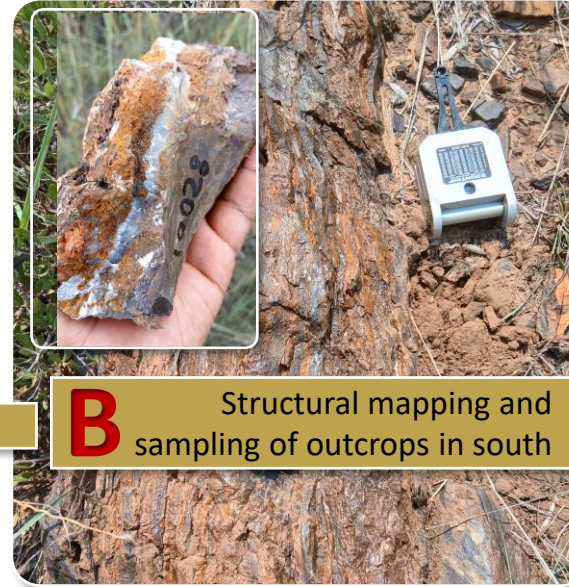
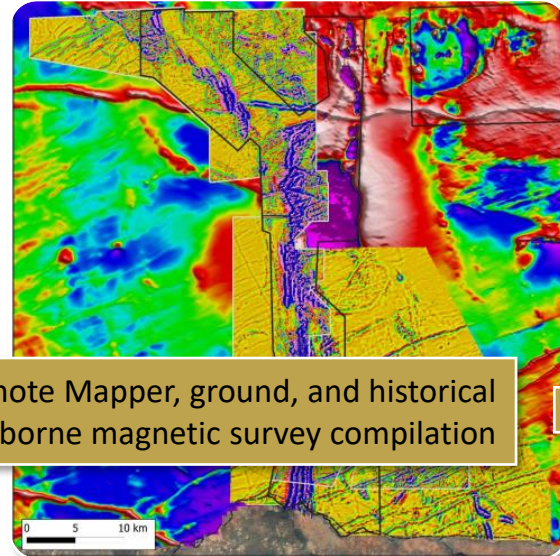
- Build on RC drill holes completed in 2024 testing bedrock and base of Kalahari sands in a new target area.
- Focus on areas with <40 m of Kalahari cover
- Test prioritized targets with overburden reverse-circulation drilling (~150 to 220 drillholes)
- Sampling the “base of Kalahari” and bedrock for Au & pathfinder elements by multi-element geochemistry

Additional reverse-circulation and core drilling (H2 2025)

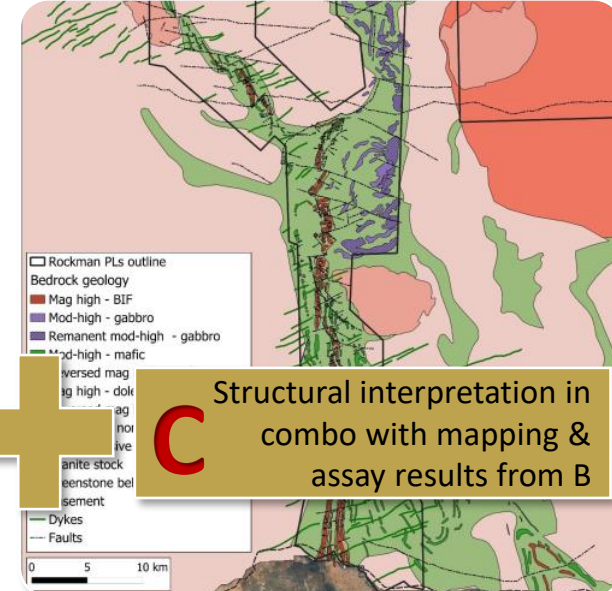
- Target key prospective targets to constrain geology and mineralization
- Program design based on results from overburden drilling and soil sampling



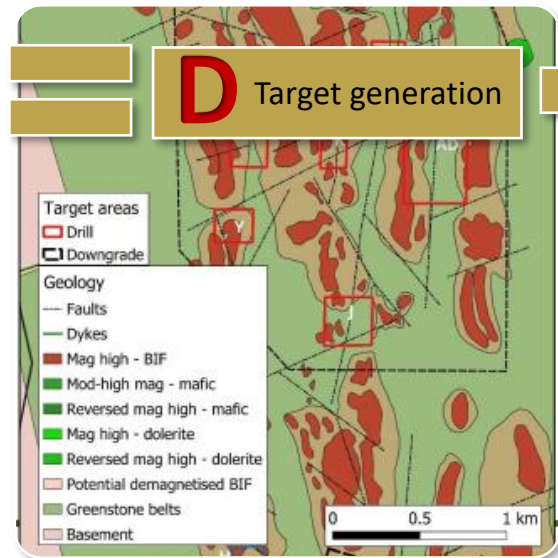
A Remote Mapper, ground, and historical
airborne magnetic survey compilation



B Structural mapping and sampling of outcrops in south



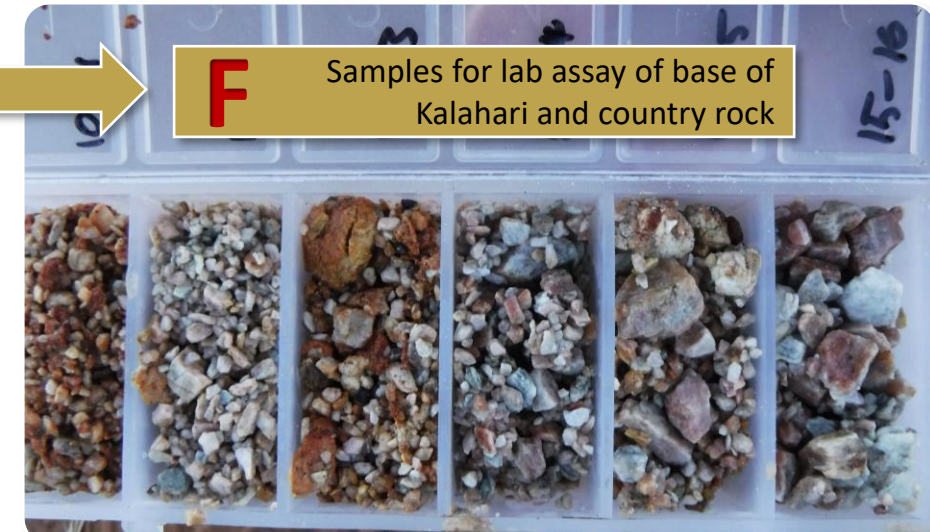
C Structural interpretation in
combo with mapping &
assay results from B



D Target generation



E Target testing using mobile, and efficient RC drill platform



F Samples for lab assay of base of Kalahari and country rock

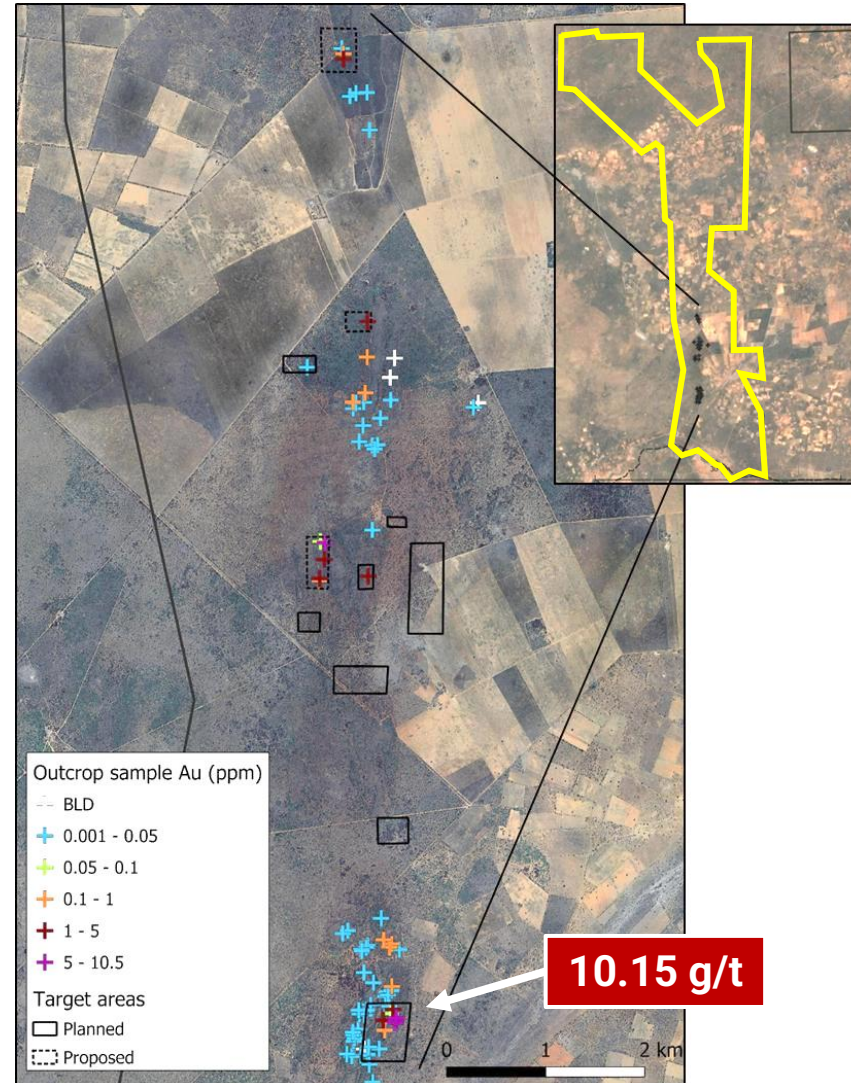


89 grab samples taken from outcropping banded iron formation (BIF) in the south of the property

- Samples mostly BIF or quartz veins with varying degrees of alteration and sulphide mineralization.
- Submitted for Au analysis by fire assay, as well as whole-rock analysis (major and trace elements).
- Eleven samples > 1 g/t with 4 samples > 5 ppm (1 g/t Au = 1 ppm Au).

Highest Au assay was 10.15 g/t

Sample results have helped determine key gold associations for target generation in sand-covered areas as well as for pathfinder analysis.





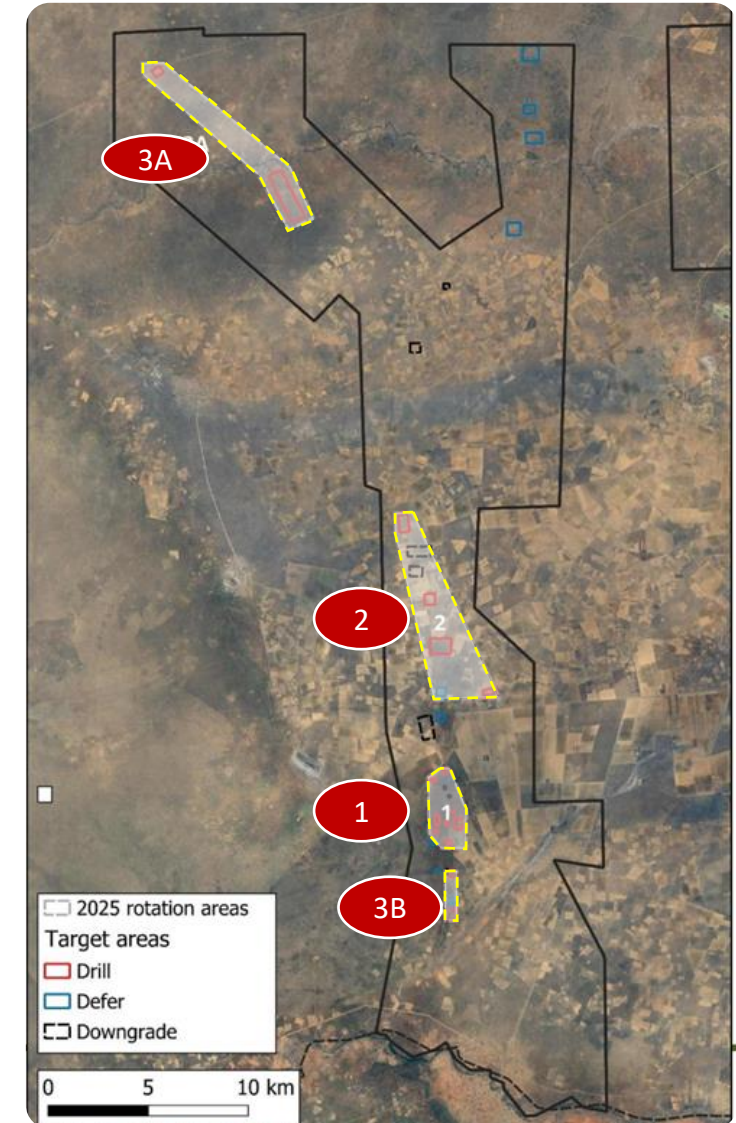
Month

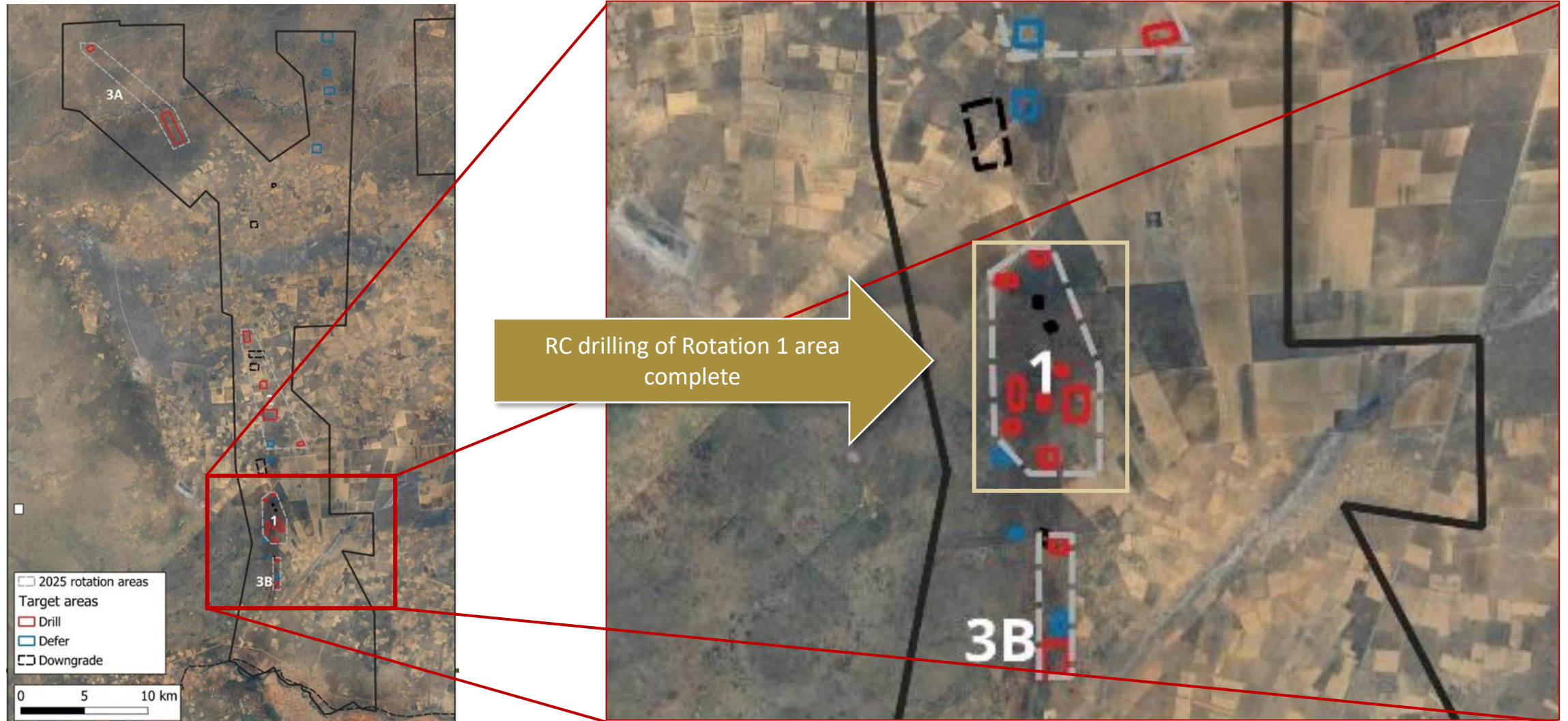
MAY	ROTATION 1	<ul style="list-style-type: none">Started May 16th8 target areas - 13 fences; 66 holes over 22 field daysLast day of Rotation 1 was June 8th.
JUNE	Break from drilling; samples prepped and sent to lab	
JULY	ROTATION 2	<ul style="list-style-type: none">Drilling to re-commence last week of June4 target areas - 7 fences totalling ~70 holes.Drilling to go until mid-July
AUGUST	Break from drilling; samples prepped, sent to lab	
	ROTATION 3A 3B	<ul style="list-style-type: none">Drilling to re-start end of July testing 4 target areas7 fences totalling ~70 holes.Last day Rotation 3A and 3B: August 21st
	End of drilling; samples prepped, sent to lab	

~206 HOLES
TOTAL

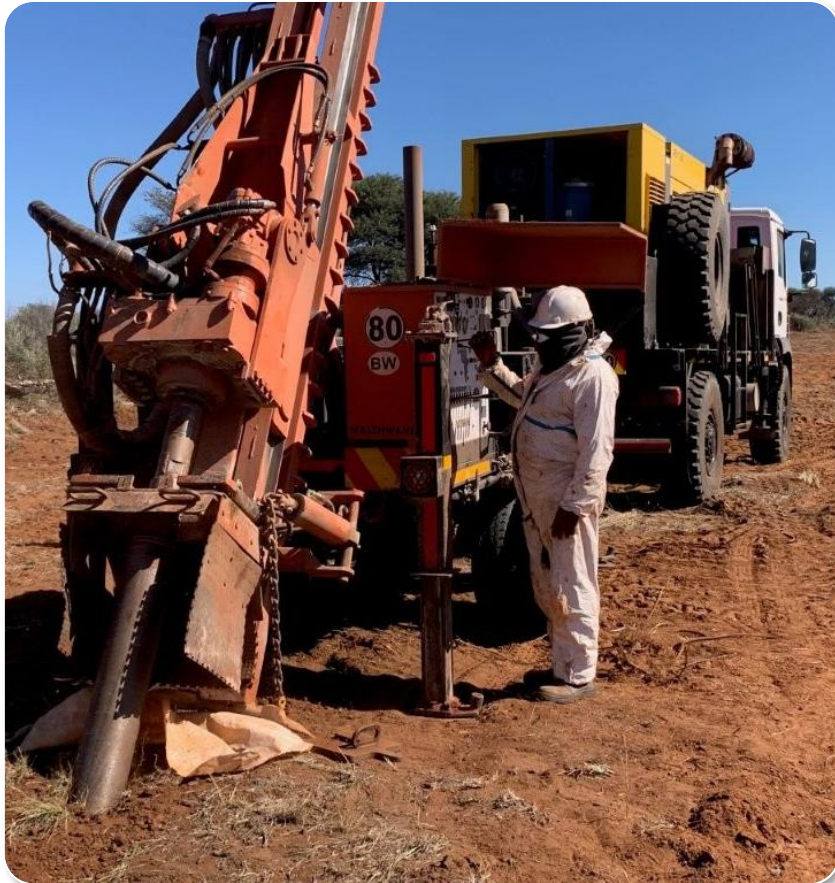
6 to 8 weeks
turnaround for assay results from
South Africa-based laboratory

Completed

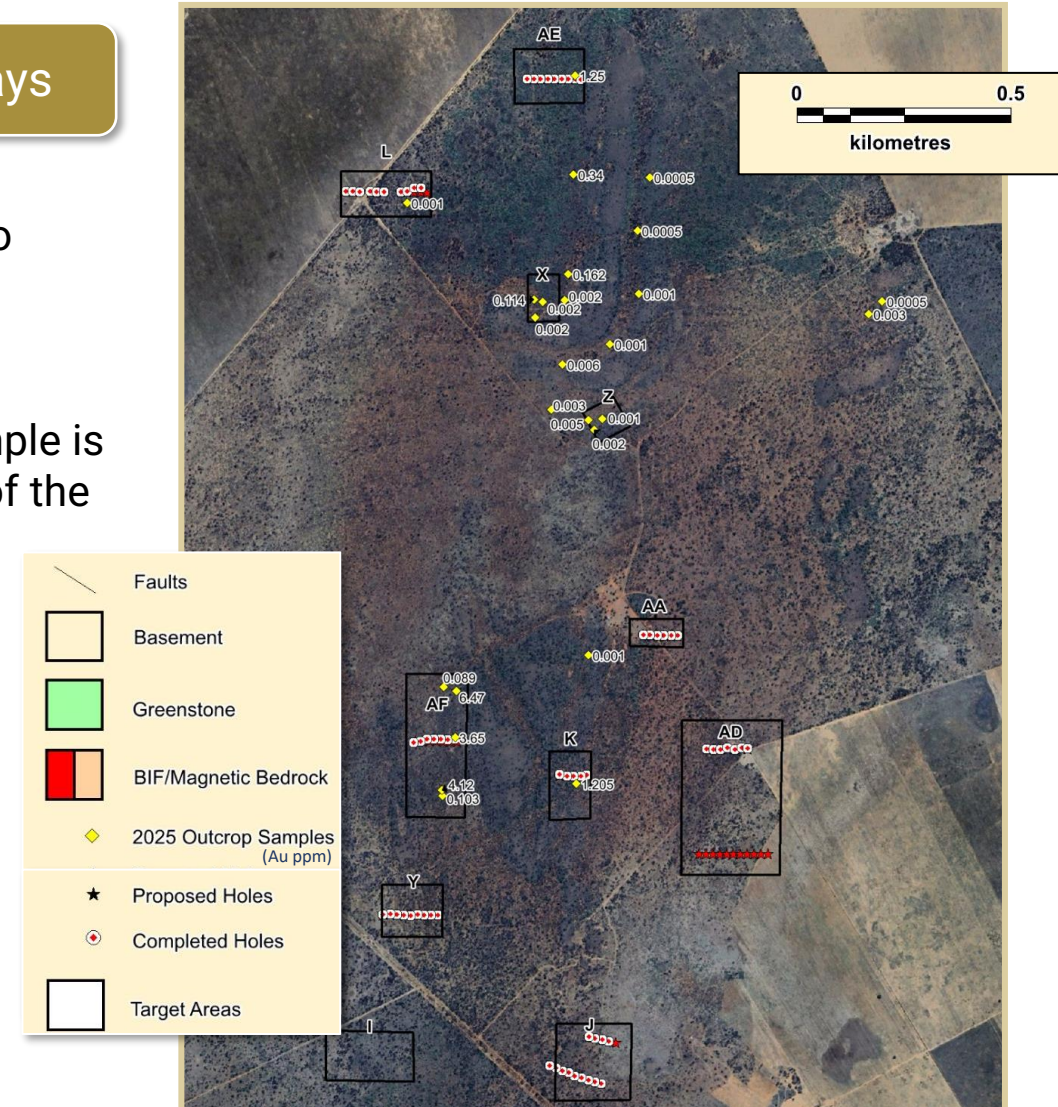




Rotation 1 complete June 8th - 66 holes completed in 22 field days



- Holes drilled 6 to 9 m into bedrock; average of 6 m overburden
- At least one ~20 cm sample is being taken at the base of the Kalahari (BOK) on each hole.
- ~25m between holes on fences.
- Fences designed to test key portions of structures on selected high priority targets;





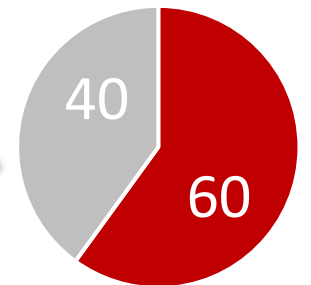
The 1st Option Agreement

North Arrow can earn a 60% interest by incurring US\$5M in exploration expenditures over 3 years:

- i. US\$1M in exploration expenditures by June 30, 2025 (firm commitment);
- ii. An additional US\$2M in expenditures by June 30, 2026
- iii. An additional US\$2M in expenditures by June 30, 2027.

Upon spending the US\$5M NAR will issue 1,000,000 shares to Rockman to vest its 60% interest

First Option –
NAR 60%



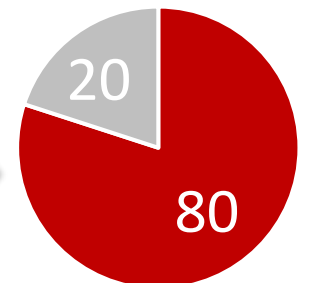
Rockman option to continue as a 40/60 Joint Venture or...
Grant NAR the option to earn an additional 20% - the PEA Option

The PEA Option

NAR can earn an additional 20% interest by completing a Preliminary Economic Assessment ("PEA") of the project

Upon delivery of the PEA, NAR will issue 2,000,000 in shares to Rockman to vest its additional 20%

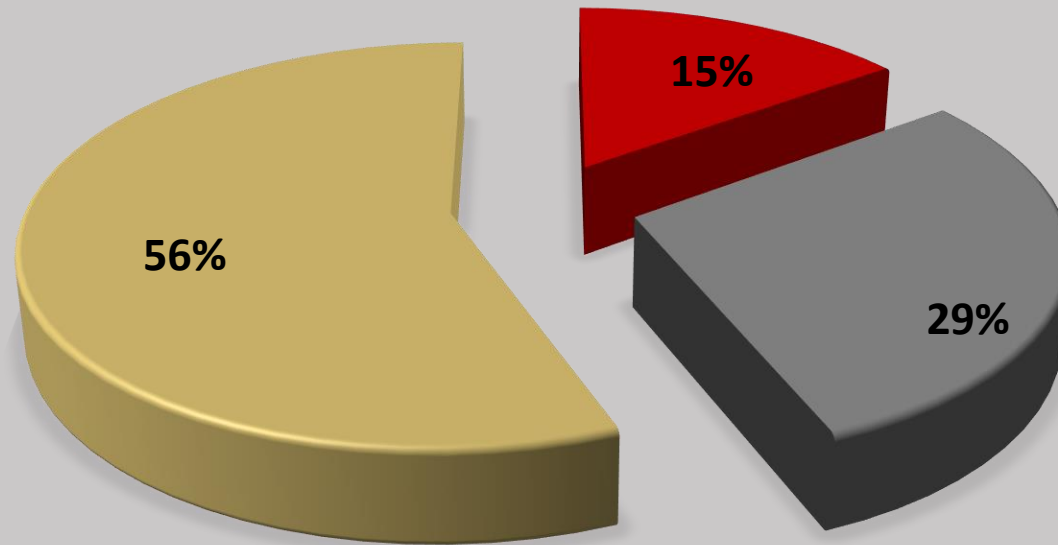
PEA Option –
NAR 80%





- ❖ Highly experienced and successful management team with a long history of **mine-finding experience** in Canada and Africa
- ❖ **Kraaipan Greenstone belt** – underexplored belt-scale opportunity with proven gold endowment; located in mining friendly Botswana
- ❖ **New discovery potential** with a funded, regional RC drill program underway; 66 holes complete with a total of ~200 holes planned; assay results into October
- ❖ **Trusted Partner and Operator – Rockman** boast a strong technical and practical team with in-country experience including access to cost effective exploration solutions using drone geophysics, bespoke efficient drilling technology and a proven deep machine learning platform.
- ❖ Can earn **80% by completing a PEA on the Kraaipan Project** *(if Rockman chooses the PEA option).*





■ Management and Directors ■ Key Shareholders ■ Float

POST FINANCING SHARE STRUCTURE

Issued and Outstanding	28,580,224
Options	2,170,000
Warrants	5,849,200*
Fully Diluted	39,618,101

*Warrants at \$0.30 expiring April 28, 2026



0.31 carat polished rectangular radiant cut



GIA colour
certified as
**Fancy Vivid
Orangy Yellow**

0.57 ct rough



GIA colour
certified as **Fancy
Vivid Orange-
Yellow**

0.21 carat polished rectangular radiant cut

✓	Jurisdiction	Clear permitting path in Nunavut
✓	Near tide water	Freight costs 50% of NWT diamond mines
✓	Large tonnage	~48 Mt down to 205m below surface
✓	Low strip ratio	<3:1 vs >10:1 for NWT diamond mines
✓	Significant diamond inventory*	~26M contained carats (inferred resource)
✓	Blue sky potential	Q1-4 at depth; 15 additional kimberlites

* CAUTION – Inferred Mineral Resources are not Mineral Reserves and do not have demonstrated economic viability



- ❖ Additional Canadian exploration upside
- ❖ Closed the sale of three spodumene-bearing pegmatite lithium properties to Li-FT Power
- ❖ Legacy diamond projects in NWT, Nunavut and Saskatchewan
- ❖ Including 60% interest in Naujaat project – host to unique, high value fancy orange yellow diamonds



Eira Thomas
President & CEO

Ken Armstrong
Chairman

Tel: +1.604.668.8355
info@northarrowminerals.com
www.northarrowminerals.com

Nick Thomas
*Community and Investor
Relations Manager*



NORTH ARROW
MINERALS INC